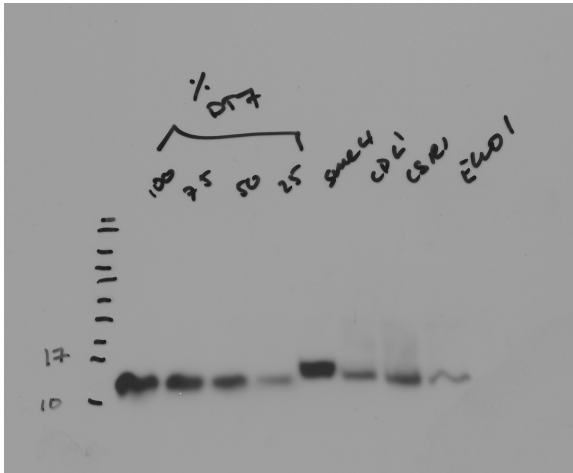


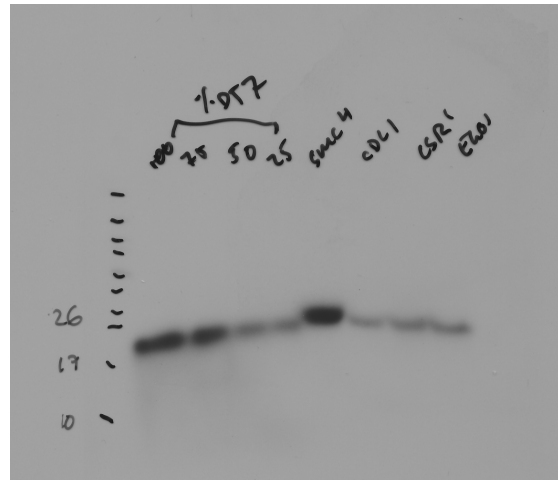
## Source Data for Figure 4

Original scans for Figure 4A:

anti-H2A:

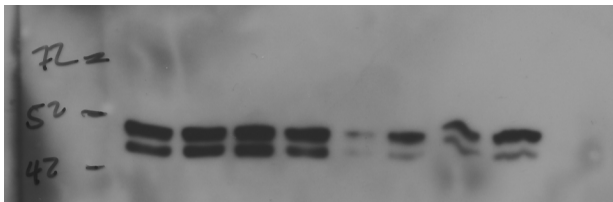


anti-H2B:



These bands were straightened in the Figure.

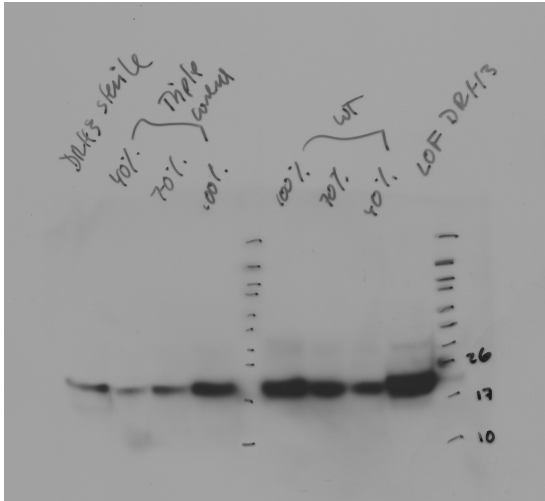
anti-actin:



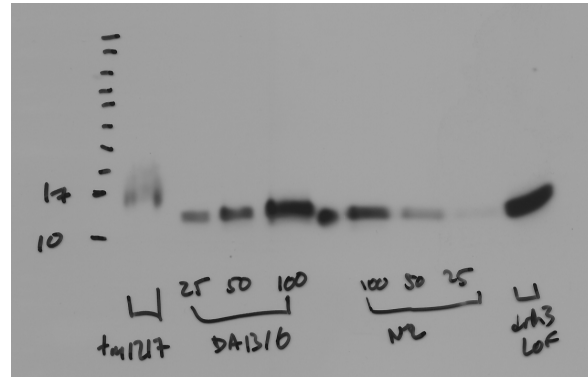
The second band is non-specific and was not included in the Figure. The orientation is also reversed. All three of these Westerns were separate gels run simultaneously from the same samples.

Original scans for Figure 4B:

anti-H2B:

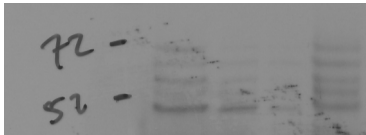


anti-H2A



The left 4 lanes of each Western were used in the Figure and the orientation was reversed and straightened. The LOF *drh-3* mutant was not included. These Westerns were run simultaneously on the same samples.

anti-actin:



The above Westerns were run simultaneously on the same samples and were re-probed for actin.