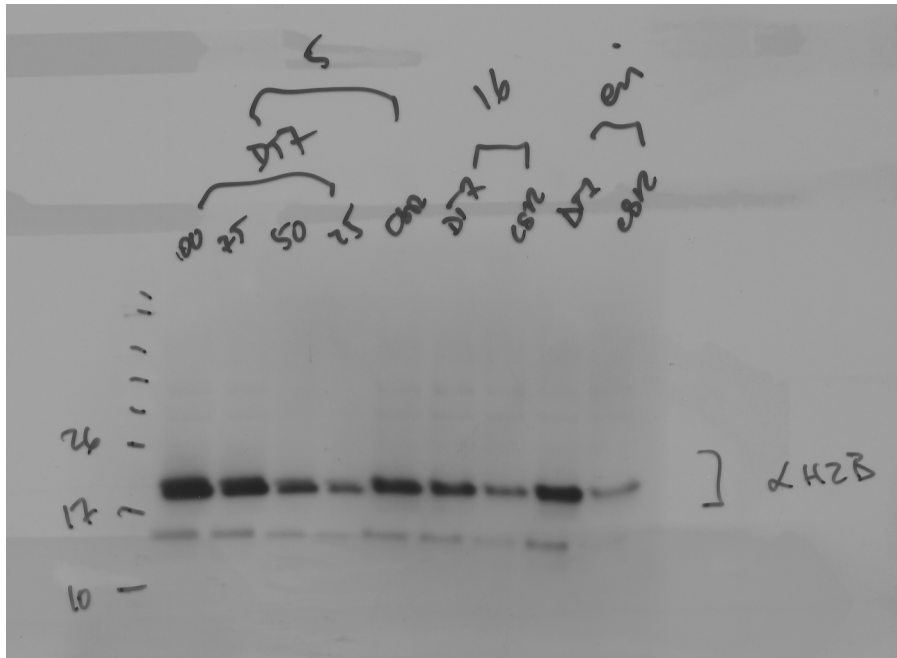


Source Data for Figure 6

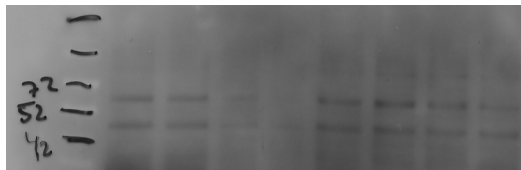
Original scans for Figure 6A:

anti-H2B:



'5' represents *armEx149*, '16' represents *armEx152*. These numbers correspond to the line number. The right two lanes were not included in the Figure, but serve as a replicate and control for the depletion of H2B upon *csr-1(RNAi)* in *eri-1(mg366)* as indicated. The lower band is non-specific and was not included.

anti-actin:



The above Western was re-probed for actin.