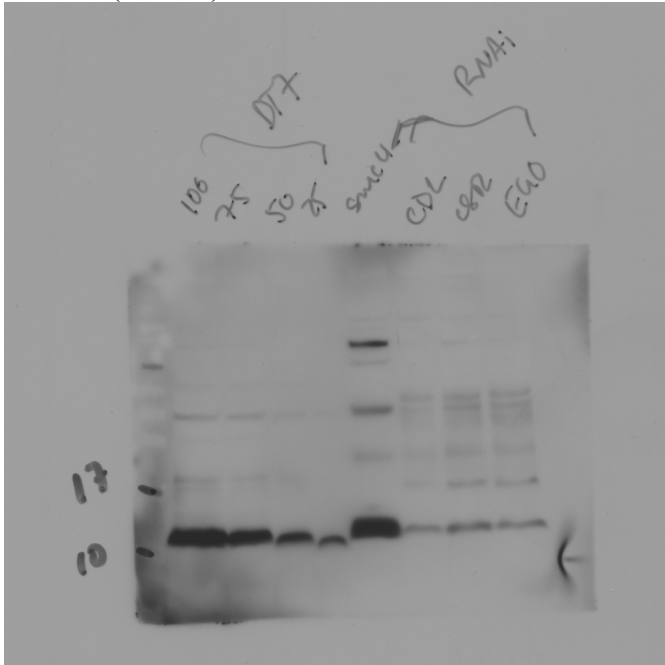


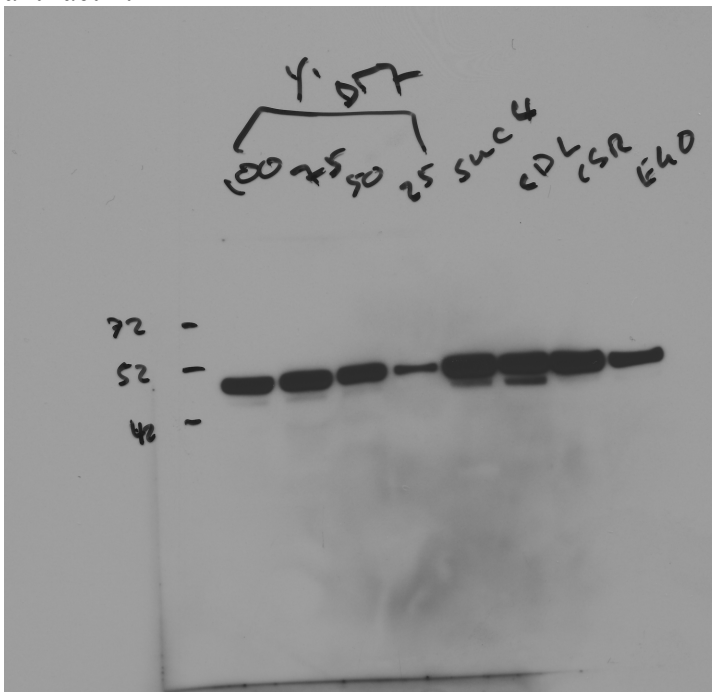
## Source Data for Figure S3

Original scans for Figure S3A:

anti-H4 (07-108)



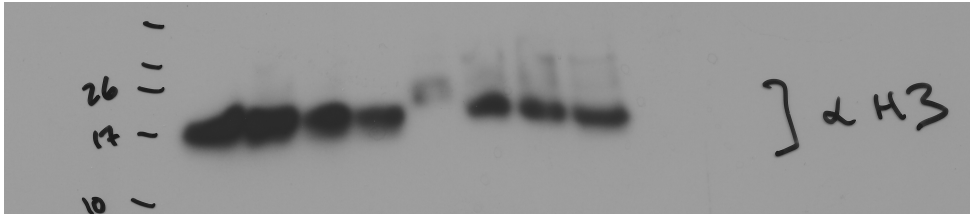
anti-actin:



These Westerns were run simultaneously on the same samples.

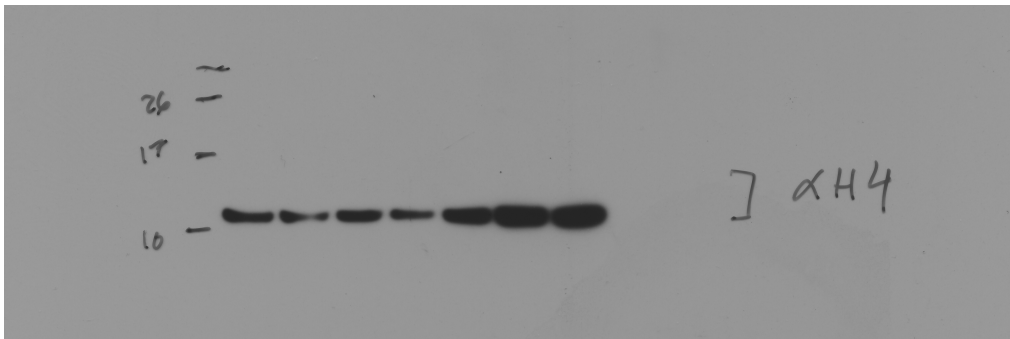
Original scans for Figure S3B:

anti-H3:



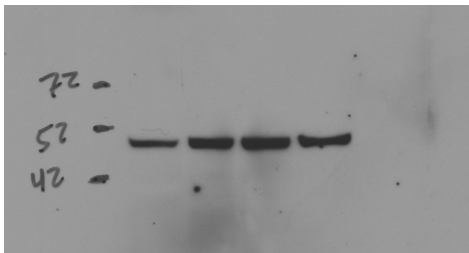
Here only the right three lanes are EV, *csr-1(RNAi)* and *ego-1(RNAi)* and were shown, the other samples are not relevant to this data.

anti-H4(ab7311):



Again, only the right three lanes are EV, *csr-1(RNAi)* and *ego-1(RNAi)* and were shown, the other samples are not relevant to this data.

anti-actin:



The right three lanes here correspond to the right three lanes in the above Westerns. The far left lane is a wild-type sample control.

All three of these Westerns were run simultaneously on the same samples.