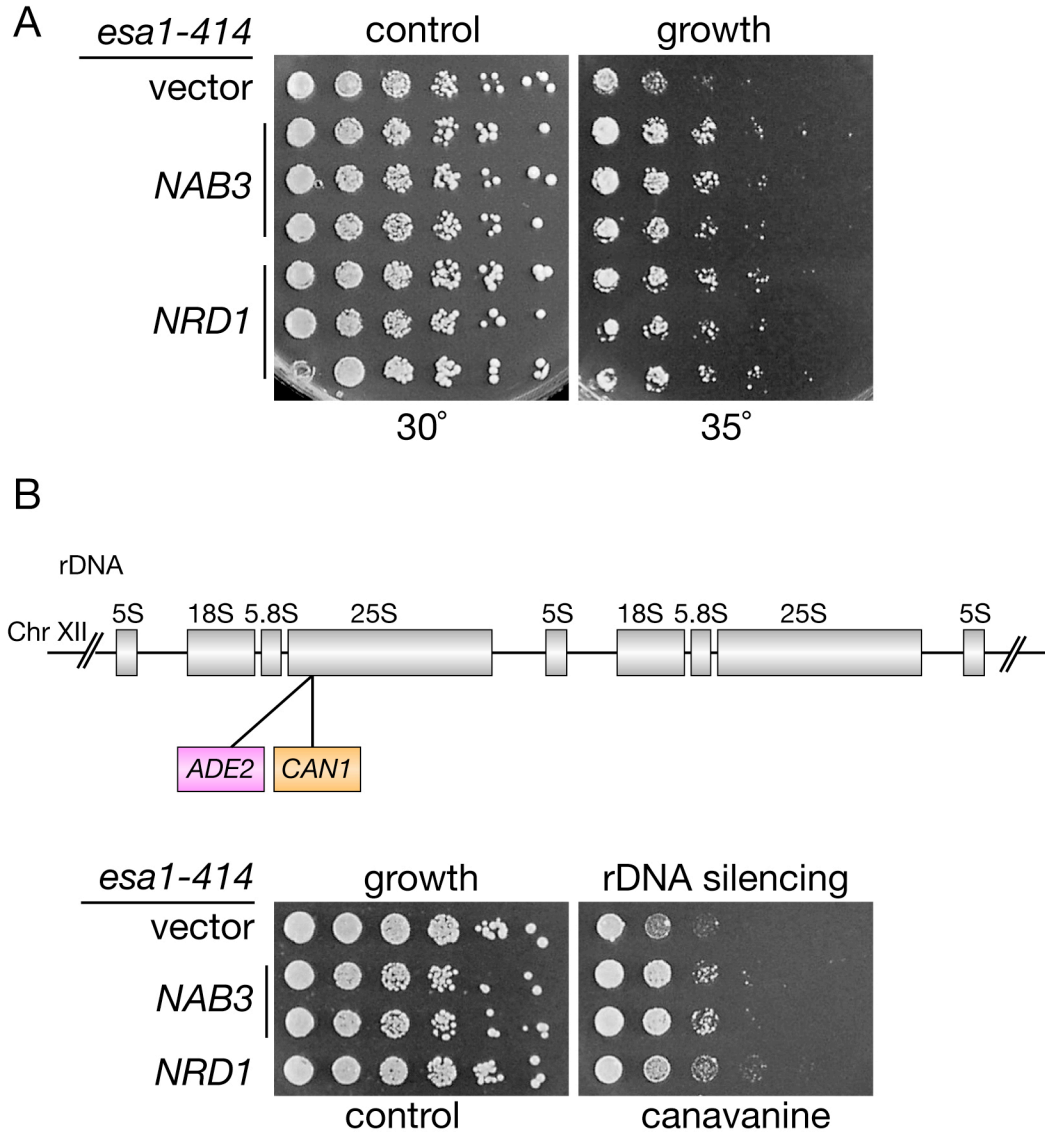


**Figure S1** Mutants of *nab3* do not display a telomeric silencing defect with an *ADE2* reporter at the left arm of chromosome VII. WT (LPY11300) and *nab3* (LPY11286) strains with the *adh4::ADE2* TEL VIII reporter were grown up overnight in YPD liquid cultures, and plated for single colonies on YPD. After 3 days growth at 30°, plates were incubated for one month at 4° for pink color development before images were captured.



**Figure S2** Overexpression of *NRD1* suppresses *esa1* phenotypes. A) Overexpression of *NRD1* suppresses the temperature-sensitivity of an *esa1* mutant. The *esa1* strain (LPY3291) was transformed with vector (pLP362), *NAB3* (pLP2018), or *NRD1* (pLP2054) 2-micron plasmids. Transformants were plated on SC-Ura-Trp at 30° for growth and 35° to observe suppression. B) Overexpression of *NRD1* suppresses the rDNA silencing defect of an *esa1* mutant. An *esa1* strain with the rDNA::*ADE2-CAN1* reporter was transformed with vector (pLP362), *NAB3* (pLP2018), or *NRD1* (pLP2054) 2-micron plasmids. Transformants were plated on SC-Ade-Arg-Ura with and without 32 µg/ml canavanine to assay for rDNA silencing.

**Table S1 The allele-specific suppression of *esa1* phenotypes**

Temperature-sensitive suppression

<b>allele</b>	<b><i>NAB3</i></b>	<b><i>LYS20</i></b>	<b><i>LEU2</i></b>	<b><i>VAP1</i></b>
<i>esa1-414</i>	+++	++	++	++++
<i>esa1-L254P</i>	-/+	+	++	+
<i>esa1-L327S</i>	-/+	-/+	-/+	++

rDNA silencing suppression

<b>allele</b>	<b><i>NAB3</i></b>	<b><i>LYS20</i></b>	<b><i>LEU2</i></b>	<b><i>VAP1</i></b>
<i>esa1-414</i>	+++	-	-/+	-/+
<i>esa1-L254P</i>	+++	-	not tested	not tested

- + indicates suppression of *esa1* phenotype (+++ signifies stronger suppression)
- /+ indicates no change in *esa1* phenotype
- indicates exacerbation of *esa1* phenotype