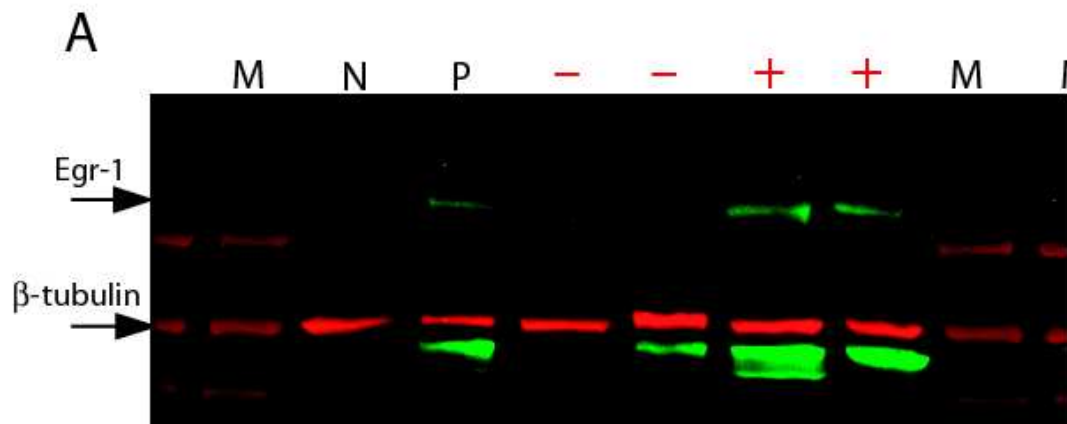


Figure S2

cDNA-AF



M - coomassie-blue prestained protein marker (Bio-RAD)  
P - positive control (3T3 cell lysate, Santa Cruz)  
N - negative control (293T cell lysate, Santa Cruz)  
"- " - no cachexia (biopsy protein lysate)  
"+ " - cachexia (biopsy protein lysate)