

ssk2 Δ *ssk22* Δ
 $\Delta\Delta\Delta\Delta$
bck1 Δ *ste11* Δ *ssk2* Δ
bck1 Δ *ste11* Δ *ssk22* Δ
bck1 Δ *ste11* Δ
ste11 Δ
 wild type



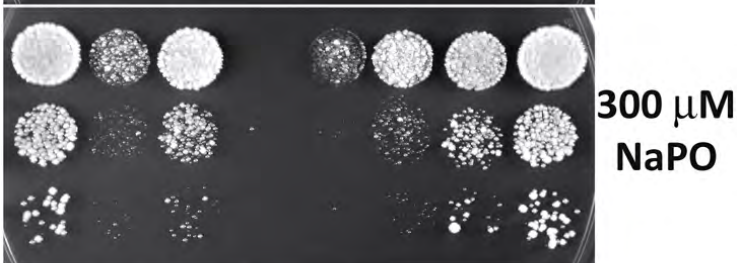
YPD
only



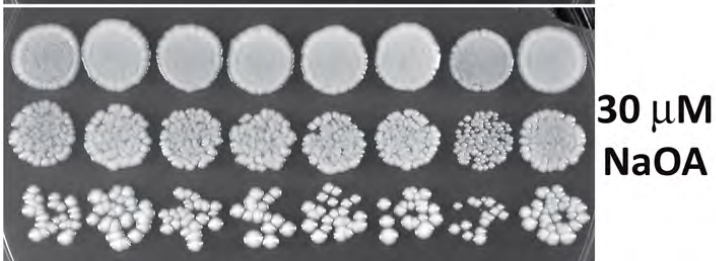
3 μ M
NaPO



30 μ M
NaPO



300 μ M
NaPO



30 μ M
NaOA