

Supporting Information

Saslis-Lagoudakis et al. 10.1073/pnas.1202242109

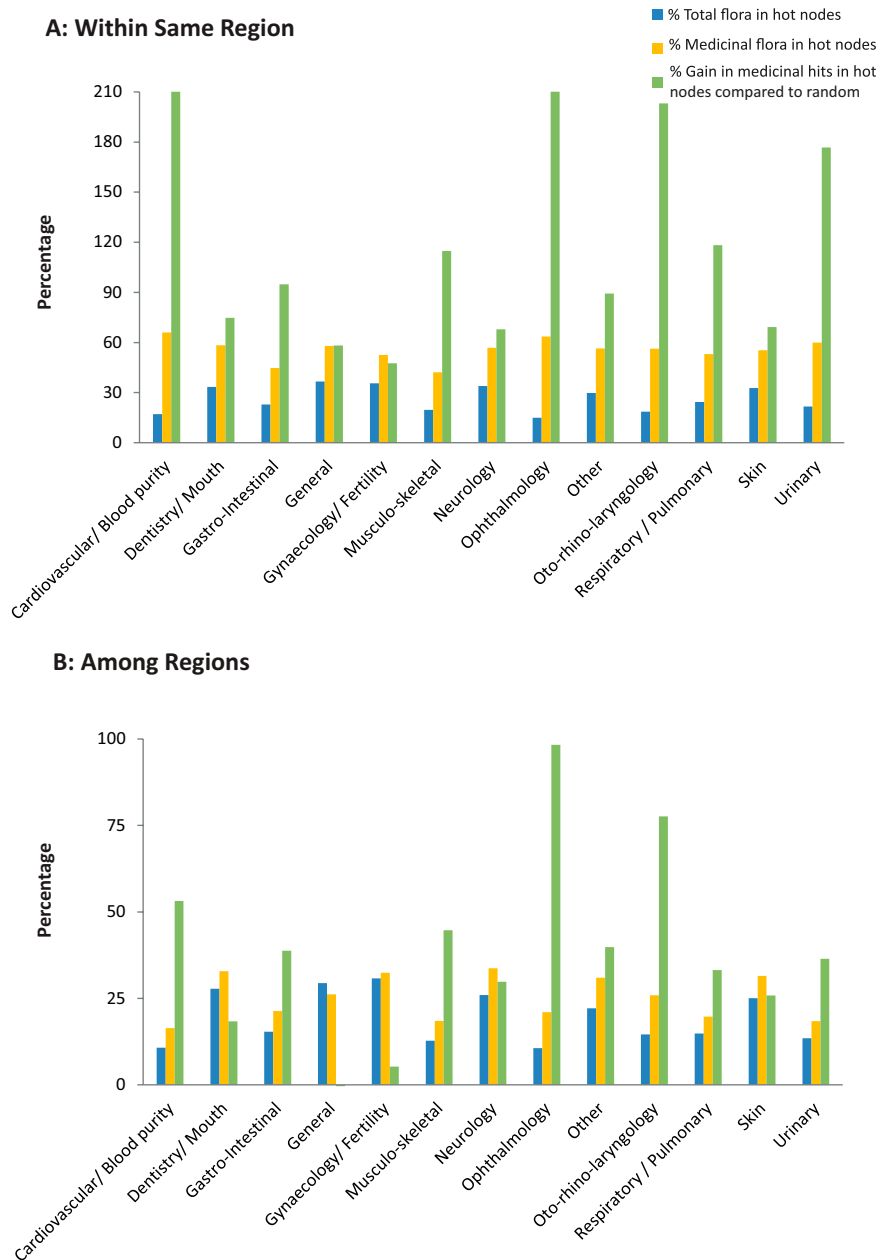


Fig. S1. Concentration of medicinal plants in phylogenetic “hot nodes” for the categories of medical conditions. Blue and orange bars show percentage of total and medicinal flora included in hot nodes, respectively. Green bars show percentage gain in medicinal plants included in hot nodes. Gain is the difference between the number of medicinal plants in hot nodes, and the number of medicinal plants expected in a random sample of the same size. (A) Patterns based on the average from analyses from within each of the three floras (Nepal, New Zealand, and Cape of South Africa). (B) Patterns based on the average from pairwise analyses among the three floras. Comparisons were carried out on a combined phylogenetic tree of the three floras to test whether hot nodes from one region can predict medicinal plant use from the other two.

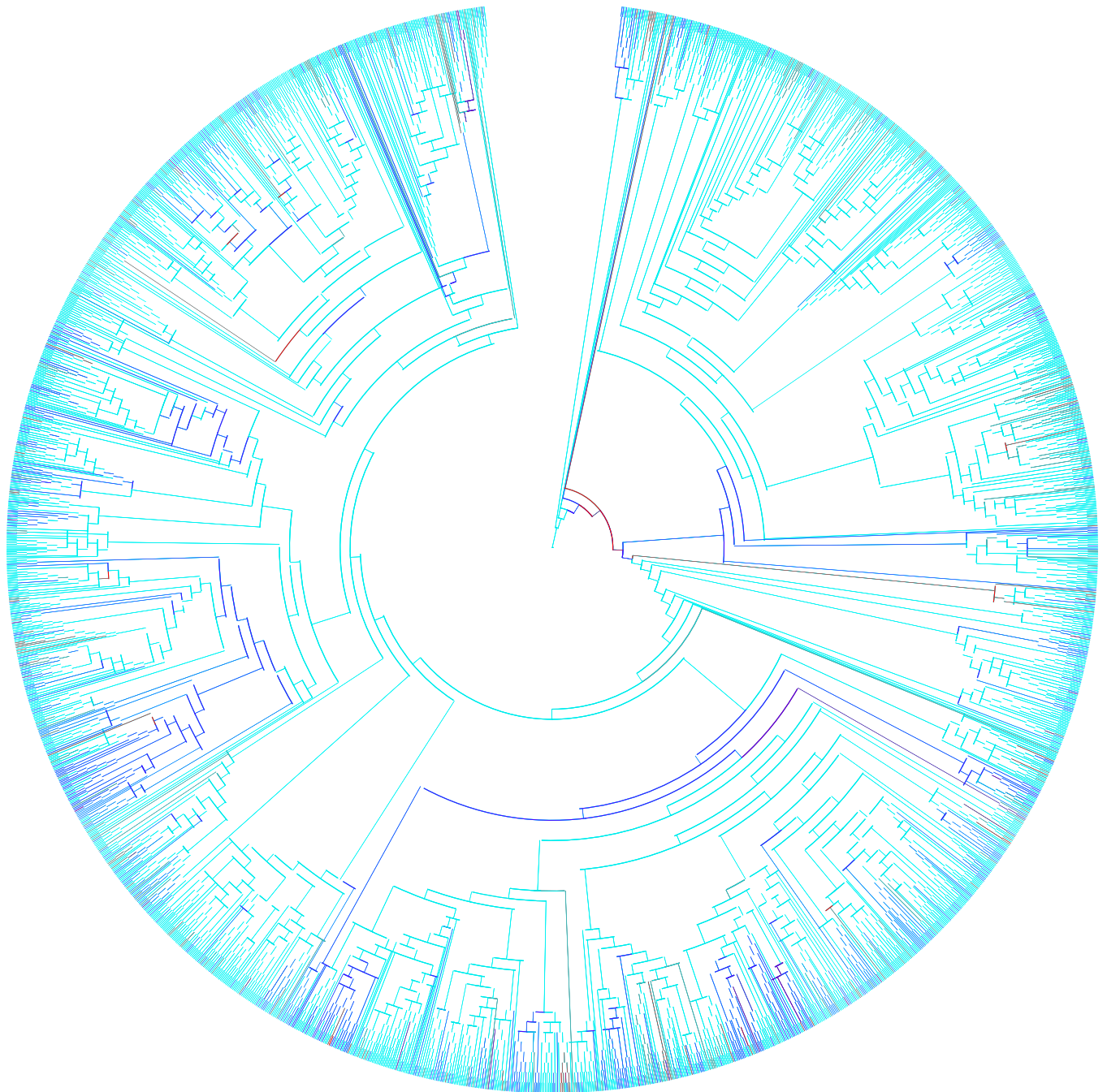


Fig. S3. Phylogenetic overlap between the medicinal floras of Nepal and New Zealand. The phylogenetic tree shown is the combined tree of the floras from the three regions reconstructed under ML criterion with RAxML 7.2.8. Light blue branches are lineages that are not used in ethnomedicine in either of the two areas. Dark blue branches are lineages used in ethnomedicine in Nepal and red ones are used in New Zealand. As shown, the medicinal floras of the two regions are found in the same lineages on the tree.

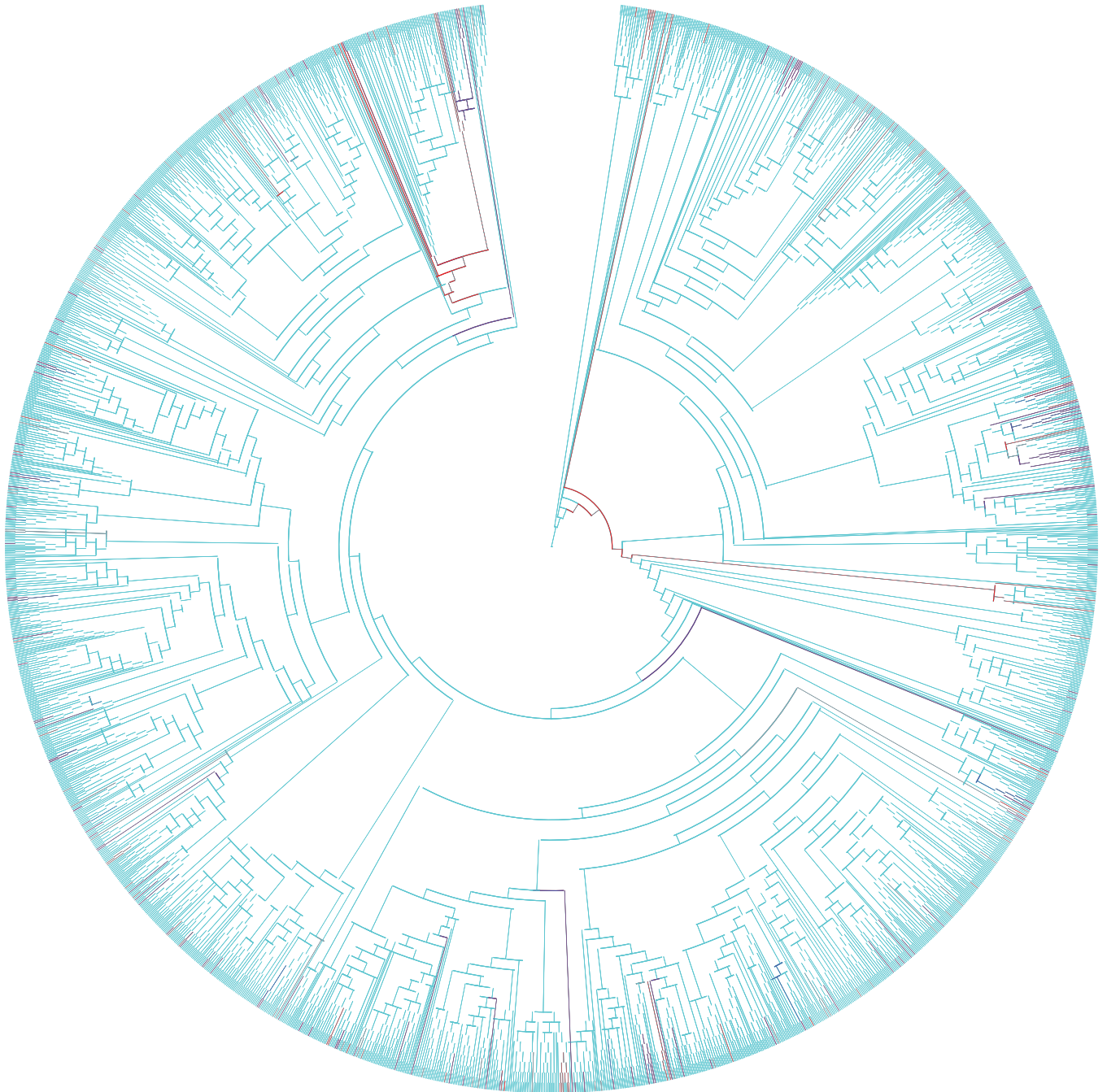


Fig. S4. Phylogenetic overlap between the medicinal floras of New Zealand and Cape of South Africa. The phylogenetic tree shown is the combined tree of the floras from the three regions reconstructed under ML criterion with RAxML 7.2.8. Light blue branches lineages that are not used in ethnomedicine in either of the two areas. Dark blue branches are lineages used in ethnomedicine in the Cape of South Africa and red ones are used in New Zealand. As shown, the medicinal floras of the two regions are found in the same lineages on the tree.

Table S1. Phylogenetic clumping of medicinal plant use in Nepal, the Cape of South Africa, and New Zealand

	MPD			NRI			P value		
	Nepal	South Africa	New Zealand	Nepal	South Africa	New Zealand	Nepal	South Africa	New Zealand
Medicinal floras	0.4007	0.4645	0.4861	5.4604	1.2102	2.1919	< 0.001	0.117	0.014
Cardiovascular/ blood purity	0.3889	0.4447	0.4316	1.3932	1.2205	2.017	0.082	0.111	0.030
Dentistry/mouth	0.3816	0.4609	0.5642	2.3249	0.5654	-0.9443	0.006	0.278	0.831
Gastrointestinal	0.3936	0.4394	0.4554	4.5074	2.6699	2.7196	< 0.001	0.003	0.003
General	0.395	0.4511	0.4402	2.3658	0.9497	2.73	0.005	0.174	0.008
Gynecology/fertility	0.3804	0.4421	0.4693	2.902	1.9582	2.1128	< 0.001	0.031	0.019
Musculoskeletal	0.3814	0.4445	0.4906	3.9846	1.591	1.2184	< 0.001	0.066	0.119
Neurology	0.3958	0.4342	0.4867	3.3898	2.4327	1.2138	< 0.001	0.012	0.115
Ophthalmology	0.365	0.4783	0.4519	2.7387	0.0133	1.1417	0.003	0.485	0.135
Other	0.3927	0.4307	0.4466	2.9959	2.3692	2.2074	0.004	0.014	0.019
Otorhinolaryngology	0.4242	0.3973	0.4379	0.3767	2.9216	1.5397	0.351	0.002	0.067
Respiratory/pulmonary	0.4149	0.4348	0.4401	1.3661	2.4334	2.2763	0.084	0.009	0.014
Skin	0.3904	0.445	0.4898	4.6528	1.9255	1.5917	< 0.001	0.035	0.052
Urinary	0.4255	0.4821	0.493	0.3739	-0.1209	0.7126	0.346	0.547	0.226

Information shown for the three medicinal floras and 13 categories of conditions. Results were acquired with the "comstruct" command in PHYLOCOM v4.1. MPD, mean phylogenetic distance within each sample; NRI, net relatedness index. *P* values in bold are the ones that remain significant after a Bonferroni correction of the α -significance level. Note that in uncorrected data, 1/20 significant comparisons may be spurious (type I errors), but the Bonferroni correction adjusts the α -threshold so the study-wide error rate remains at 0.05.

Table S2. "Hot nodes" of medicinal use within the three regions

	% total flora included	% medicinal hits	% gain in medicinal hits included compared with random	Significance in gain (<i>P</i> value)
Medicinal floras	32.66	52.10	59.50	< 0.001
Cardiovascular/blood purity	17.10	65.98	285.91	< 0.001
Dentistry/mouth	33.38	58.35	74.81	< 0.001
Gastrointestinal	22.92	44.66	94.83	< 0.001
General	36.59	57.85	58.13	< 0.001
Gynecology/fertility	35.62	52.54	47.50	< 0.001
Musculoskeletal	19.65	42.20	114.72	< 0.001
Neurology	33.89	56.87	67.83	< 0.001
Ophthalmology	14.97	63.56	324.53	< 0.001
Other	29.79	56.38	89.25	< 0.001
Otorhinolaryngology	18.56	56.28	203.15	< 0.001
Respiratory/pulmonary	24.33	53.09	118.21	< 0.001
Skin	32.71	55.38	69.29	< 0.001
Urinary	21.66	59.94	176.71	< 0.001
Average categories	26.24	55.62	132.68	< 0.001

Using the option "nodesig" in PHYLOCOM v4.1, nodes on the phylogenetic tree with significantly more medicinal plants than in the rest of the phylogeny were recovered. The first column of data shows the percentage of the total flora included in those nodes. The second column shows the percentage of the medicinal flora included in the nodes. The third column shows the percentage of gain in medicinal plants included in hot nodes, compared with what would be expected by chance. Results are presented for the medicinal floras of Nepal, New Zealand, and the Cape of South Africa, and for the 13 categories of conditions. Each figure is the average of the results from the three regions. All *P* values remain significant after a Bonferroni correction of the α -significance level. Note that in uncorrected data, 1/20 significant comparisons may be spurious (type I errors), but the Bonferroni correction adjusts the α -threshold so the study-wide error rate remains at 0.05.

Table S3. Cross-cultural congruence in plant use in hot nodes

	% total flora included	% medicinal hits	% gain in medicinal hits included compared with random	Significance in gain (<i>P</i> value)
Medicinal floras	21.97	25.62	16.65	0.2657
Cardiovascular/blood purity	10.73	16.43	53.14	0.0673
Dentistry/mouth	27.78	32.87	18.33	0.2015
Gastrointestinal	15.39	21.35	38.77	0.0822
General	29.41	26.18	-10.99	N/A
Gynecology/fertility	30.81	32.43	5.25	0.4355
Musculoskeletal	12.78	18.50	44.70	0.0833
Neurology	25.95	33.68	29.80	0.0701
Ophthalmology	10.59	21.01	98.33	0.0017
Other	22.13	30.95	39.84	0.0415
Otorhinolaryngology	14.59	25.92	77.61	0.0043
Respiratory/pulmonary	14.81	19.72	33.17	0.1493
Skin	25.03	31.50	25.87	0.1049
Urinary	13.50	18.42	36.43	0.1230
Average categories	19.50	25.30	37.71	0.1057

Figures are the average from the six tests to investigate the extent to which hot nodes of each region (source region) can predict the medicinal plant use in the other two regions (target regions). The first column of data shows the percentage of the total flora of the target regions included in the hot nodes of the source region, using the option "nodesig" in PHYLOCOM v4.1. The second column shows the percentage of medicinal plants of the target regions found in those nodes. The third column shows the percentage of gain in medicinal hits achieved by sampling those nodes, compared with random sampling. Results are summarized for the medicinal floras of Nepal, New Zealand, and the Cape of South Africa, and for 13 categories of conditions. *P* value in bold is the one that remains significant after a Bonferroni correction of the α -significance level. Note that in uncorrected data, 1/20 significant comparisons may be spurious (type I errors), but the Bonferroni correction adjusts the α -threshold so the study-wide error rate remains at 0.05. N/A, not applicable

Table S4. Similarities between the floras of Nepal, New Zealand, and the Cape of South Africa based on the Sørensen Index (ref. 1) at the genus level

Region	Nepal	New Zealand	Cape of South Africa
Nepal	1		
New Zealand	0.28	1	
Cape of South Africa	0.37	0.34	1

1. Sørensen T (1948) A method of establishing groups of equal amplitude in plant sociology based on similarity of species and its application to analyses of the vegetation on Danish commons. *Biol Skr* 5:1–34.

Table S5. Significance of agreement in lineages used between pairs of medicinal floras when genera used in more than one region are removed

Region	Nepal	Cape of South Africa	New Zealand
Nepal	—		
Cape of South Africa	<i>P</i> < 0.001	—	
New Zealand	<i>P</i> = 0.005	<i>P</i> = 0.021	—

Significance was assessed by comparing observed values of pair-wise distances to those from 10,000 random comparisons per case and *P* values were the frequency of randomizations with smaller pair-wise distance.

Table S6. Drug-producing genera. Information extracted from Zhu et al. (ref. 1). Underlined signifies genera present in our dataset

The asterisk (*) here below represents genera used in at least one of the medicinal floras of Nepal, New Zealand, the Cape of South Africa. The terms "Applied" and "Trial" given after each genus name indicate whether the genus is used in drug production or is under trial, respectively.

Acanthaceae: Andrographis; Applied. **Amaranthaceae:** Spinacia; Applied&Trial. **Amaryllidaceae:** Allium*; Applied. Galanthus; Applied. Leucojum; Applied. Lycoris; Applied. Narcissus; Applied. **Annonaceae:** Artabotrys; Applied. **Apiaceae:** Ammi ; Applied. Apium*; Trial. Carum*; Trial. Centella*; Applied. Daucus*; Applied. Petroselinum; Trial. **Apocynaceae:** Acokanthera; Applied,Trial. Asclepias*; Applied. Aspidosperma; Applied&Trial. Catharanthus*; Applied&Trial. Hoodia; Trial. Ochrosia; Applied&Trial. Rauvolfia*; Applied. Strophanthus; Applied&Trial. Tabernaemontana*; Applied&Trial. Vinca; Applied. **Araliaceae:** Panax*; Trial. **Arecaceae:** Areca*; Applied. Cocos; Applied&Trial. Serenoa; Applied. **Asparagaceae:** Convallaria; Applied. Urginea; Trial. **Asteraceae:** Artemisia*; Applied&Trial. Cynara ; Applied&Trial. Inula*; Trial. Matricaria; Trial. Silybum ; Applied&Trial. Stevia; Applied. **Berberidaceae:** Berberis*; Applied. Dyosma; Applied&Trial. Leontice; Applied. Podophyllum*; Applied&Trial. Sinopodophyllum; Applied&Trial. **Betulaceae:** Corylus*; Applied&Trial. **Bigoniaceae:** Tabebuia; Trial. **Boraginaceae:** Cordia*; Applied. **Brassicaceae:** Brassica*; Applied&Trial. Isatis; Trial. Rorippa*; Applied. Sinapis; Trial. Commiphora; Applied. **Calophyllaceae:** Calophyllum; Trial. **Campanulaceae:** Lobelia*; Trial. **Cannabaceae:** Cannabis*; Applied&Trial. **Celastraceae:** Maytenus*; Trial. Tripterygium; Applied&Trial. **Colchicaceae:** Colchicum; Applied&Trial. **Combretaceae:** Combretum*; Trial. **Convolvulaceae:** Ipomoea*; Applied. Turbina; Applied. **Cornaceae:** Camptotheca; Applied&Trial. **Cucurbitaceae:** Hemsleya; Applied. **Cupressaceae:** Juniperus*; Trial. Thuja; Applied. **Ephedraceae:** Ephedra*; Applied. **Erythroxylaceae:** Erythroxylum; Applied. **Euphorbiaceae:** Croton*; Applied&Trial. Euphorbia*; Trial. Hippomane; Trial. Homalanthus ; Trial. Ricinus*; Trial. **Fabaceae:** Acacia*; Applied. Cassia*; Applied. Castanospermum*; Trial. Ceratonia; Applied. Cicer; Trial. Crotalaria*; Applied. Cullen; Trial. Genista; Trial. Glycine; Applied&Trial. Glycyrrhiza*; Applied. Indigofera*; Trial. Lens; Trial. Lonchocarpus; Applied. Medicago; Applied&Trial. Melilotus; Applied. Mucuna*; Applied. Phaseolus; Trial. Physostigma; Applied&Trial. Pisum*; Applied&Trial. Pueraria; Trial. Senegalia; Applied. Sophora*; Applied&Trial. Trifolium; Applied&Trial. Vachellia; Applied. Vicia; Trial. Vigna*; Trial. **Hippocastanaceae:** Aesculus*; Applied. **Icacinaeae:** Mappledia; Applied&Trial. **Lamiaceae:** Lavandula; Trial. Mentha*; Applied&Trial. Monarda; Trial. Perilla*; Trial. Plectranthus; Applied. Salvia*; Trial. Thymus*; Applied. **Lauraceae:** Cinnamomum*; Applied. Laurus; Trial. Ocotea; Applied. **Loganiaceae:** Strychnos*; Applied&Trial. **Lycopodiaceae:** Huperzia ; Applied&Trial. Lycopodium; Applied. **Malvaceae:** Theobroma; Applied. **Melanthiaceae:** Veratrum; Trial. **Meliaceae:** Dysoxylum*; Trial. **Menispermaceae:** Anamirta; Applied. Anomospermum; Trial. Chondrodendron; Applied&Trial. Cissampelos*; Applied. Curarea; Applied. Stephania*; Applied. **Moraceae:** Morus*; Applied&Trial. **Myrtaceae:** Callistemon; Applied. Leptospermum; Applied. Syzygium*; Trial. **Nitrariaceae:** Symphytum; Applied. **Oleaceae:** Fraxinus*; Trial. **Papaveraceae:** Corydalis*; Applied. Glaucium; Applied. Papaver*; Applied&Trial. Sanguinaria; Applied. **Pinaceae:** Cedrus*; Applied. Larix; Applied. Pinus*; Applied. Tsuga; Applied. **Piperaceae:** Piper*; Applied. **Plantaginaceae:** Digitalis; Applied&Trial. **Poaceae:** Cymbopogon*; Trial. Oryza*; Applied. Triticum; Applied. Zea; Applied&Trial. **Quillajaceae:** Quillaja; Trial. **Ranunculaceae:** Adonis; Applied. Coptis; Applied. Hydrastis; Applied. Thalictrum*; Applied. **Rosaceae:** Agrimonia*; Applied. Malus*; Trial. Potentilla*; Applied. Prunus*; Applied. **Rubiaceae:** Cinchona; Applied. Coffea; Applied. Galium*; Trial. Ophiorrhiza*; Applied&Trial. Pausinystalia; Applied. **Rutaceae:** Citrus*; Applied. Pilocarpus; Applied. Sarcocelicope; Trial. **Salicaceae:** Populus*; Applied. Salix*; Applied. **Sapindaceae:** Paullinia; Applied. **Simaroubaceae:** Brucea; Trial. **Solanaceae:** Anisodus; Applied. Atropa; Applied. Capsicum*; Applied&Trial. Datura*; Applied. Hyoscyamus ; Applied. Mandragora; Applied. Nicotiana*; Applied. Solanum*; Applied. **Taxaceae:** Taxus*; Applied&Trial. **Theaceae:** Camellia; Applied&Trial. **Thymelaeaceae:** Pimelea; Trial. **Zingiberaceae:** Curcuma*; Trial. Zingiber*; Applied&Trial. **Zygophyllaceae:** Larrea; Applied&Trial.

1. Zhu F, et al. (2011) Clustered patterns of species origins of nature-derived drugs and clues for future bioprospecting. *Proc Natl Acad Sci USA* 108:12943–12948.

Table S7. Plant genera with high priority for future screening for overall medicinal bioactivity

These genera were included in the hot nodes of at least two of the study regions (Nepal, New Zealand, and the Cape of South Africa).

Achariaceae: *Acharia*, *Ceratiocycos*, **Amaranthaceae:** *Psilotrichum*, **Anacardiaceae:** *Anacardium*, *Buchanania*, *Cotinus*, *Dobinea*, *Heeria*, *Laurophyllum*, *Mangifera*, *Pistacia*, *Rhus*, *Semecarpus*, *Spondias*, **Apocynaceae:** *Aclepias*, *Aspidoglossum*, *Gomphocarpus*, *Telosma*, *Xysmalobium*, **Asteraceae:** *Marasmodes*, *Myriactis*, **Begoniaceae:** *Begonia*, **Betulaceae:** *Alnus*, *Betula*, *Carpinus*, *Corylus*, **Brassicaceae:** *Alliaria*, *Arabidopsis*, *Arabis*, *Barbarea*, *Brassica*, *Braya*, *Cadaba*, *Capparis*, *Capsella*, *Cardamine*, *Chamira*, *Christolea*, *Cleome*, *Crateva*, *Descurainia*, *Desideria*, *Dilophia*, *Diplotaxis*, *Dontostemon*, *Draba*, *Erysimum*, *Eutrema*, *Hedinia*, *Heliophila*, *Iberis*, *Lepidium*, *Lignariella*, *Maerua*, *Megacarpaea*, *Microsisymbrium*, *Nasturtium*, *Notothlaspi*, *Pachycladon*, *Pegaeophyton*, *Phaeonichium*, *Raphanus*, *Rorippa*, *Sisymbrium*, *Thlaspi*, *Torularia*, **Cannabaceae:** *Cannabis*, *Humulus*, **Caricaceae:** *Carica*, **Casuarinaceae:** *Casuarina*, **Celastraceae:** *Bhesa*, *Cassine*, *Celastrus*, *Elaeodendron*, *Euonymus*, *Gloveria*, *Lophopetalum*, *Maurocena*, *Maytenus*, *Mystroxyton*, *Putterlickia*, *Reissantia*, *Robsonodendron*, *Stackhousia*, **Clusiaceae:** *Garcinia*, *Hypericum*, *Mesua*, **Combretaceae:** *Anogeissus*, *Combretum*, *Quisqualis*, *Terminalia*, **Coriariaceae:** *Coriaria*, **Corynocarpaceae:** *Corynocarpus*, **Crassulaceae:** *Adromischus*, *Cotyledon*, *Crassula*, *Kalanchoe*, *Sedum*, **Cucurbitaceae:** *Benincasa*, *Biswarea*, *Bryonia*, *Citrullus*, *Coccinia*, *Cucumis*, *Cucurbita*, *Cyclanthera*, *Diplocyclos*, *Edgaria*, *Gomphogyne*, *Gymnopetalum*, *Gynostemma*, *Herpetospermum*, *Kedrostis*, *Lagenaria*, *Luffa*, *Momordica*, *Mukia*, *Neosalsomitra*, *Sechium*, *Sicyos*, *Solena*, *Thladiantha*, *Trichosanthes*, *Zehneria*, **Cunoniaceae:** *Acakma*, *Cunonia*, *Platylophus*, *Weinmannia*, **Daphniphyllaceae:** *Daphniphyllum*, **Datisceae:** *Datisca*, *Tetrameles*, **Dipterocarpaceae:** *Shorea*, **Elaeagnaceae:** *Elaeagnus*, *Hippophae*, **Elaeocarpaceae:** *Aristotelia*, *Elaeocarpus*, *Sloanea*, **Elatinaceae:** *Bergia*, *Elatine*, **Escalloniaceae:** *Ixerba*, **Euphorbiaceae:** *Acalypha*, *Adenocline*, *Alchornea*, *Aleurites*, *Andrachne*, *Antidesma*, *Baccaurea*, *Baliospermum*, *Bischofia*, *Breynia*, *Bridelia*, *Chrozophora*, *Cleidion*, *Clutia*, *Croton*, *Dalechampia*, *Euphorbia*, *Excoecaria*, *Flueggea*, *Glochidion*, *Homalanthus*, *Hybaenanche*, *Jatropha*, *Lumnosia*, *Leidesia*, *Macaranga*, *Mallotus*, *Mercurialis*, *Ostodes*, *Phyllanthus*, *Poranthera*, *Putranjiva*, *Ricinus*, *Sapium*, *Sauropus*, *Securinega*, *Seidelia*, *Tragia*, *Trewia*, **Fabaceae:** *Abrus*, *Acacia*, *Acrocarpus*, *Aeschynomene*, *Albizia*, *Alysicarpus*, *Amphicarpaea*, *Amphithalea*, *Apios*, *Arachis*, *Argyrolobium*, *Aspalathus*, *Astragalus*, *Atylosia*, *Bauhinia*, *Bolusafra*, *Butea*, *Caesalpinia*, *Cajanus*, *Calpurnia*, *Campylotropis*, *Canavalia*, *Caragana*, *Carmichaelia*, *Cassia*, *Chamaecrista*, *Chesneya*, *Cicer*, *Clianthus*, *Clitoria*, *Cochlianthus*, *Codariocalyx*, *Colutea*, *Crotalaria*, *Cyclopia*, *Cytisus*, *Dalbergia*, *Delonix*, *Mukia*, *Neosalsomitra*, *Dipogon*, *Dolichos*, *Lumnosia*, *Entada*, *Eriosema*, *Erythrina*, *Flemingia*, *Galactia*, *Geissaspis*, *Genista*, *Glycine*, *Glycyrrhiza*, *Gueldenstaedtia*, *Hedysarum*, *Hypocalyptus*, *Indigofera*, *Kennedia*, *Lablab*, *Lathyrus*, *Lebeckia*, *Lens*, *Lespedeza*, *Lessertia*, *Leucaena*, *Liparia*, *Lotononis*, *Lotus*, *Lupinus*, *Macrotyloma*, *Medicago*, *Melilotus*, *Melolobium*, *Millettia*, *Mimosa*, *Montigena*, *Mucuna*, *Ormosia*, *Otholobium*, *Oxytropis*, *Paracalyx*, *Paraserianthes*, *Parochetus*, *Phaseolus*, *Piptanthus*, *Pisum*, *Pithecellobium*, *Podalyria*, *Polhillia*, *Pongamia*, *Pterocarpus*, *Pueraria*, *Rafnia*, *Rhynchosia*, *Robinia*, *Saraca*, *Schotia*, *Senna*, *Sesbania*, *Shuteria*, *Smithia*, *Sophora*, *Spatholobus*, *Stirtonanthus*, *Tadehagi*, *Tamarindus*, *Tephrosia*, *Trifolium*, *Trigonella*, *Uraria*, *Vicia*, *Vigna*, *Virgilia*, *Wiborgia*, *Wisteria*, *Xiphosoma*, *Zornia*, **Fagaceae:** *Castanopsis*, *Lithocarpus*, *Nothofagus*, *Quercus*, **Geissolomataceae:** *Geissoloma*, **Geraniaceae:** *Erodium*, *Geranium*, *Monsonia*, *Pelargonium*, **Grossulariaceae:** *Ribes*, **Haloragaceae:** *Gonocarpus*, *Haloragis*, **Hamamelidaceae:** *Exbucklandia*, *Trichocephalus*, *Trichocladus*, **Juglandaceae:** *Engelhardtia*, *Juglans*, **Lamiaceae:** *Ballota*, *Galeobdolon*, *Lamium*, *Leonotis*, *Leonurus*, *Marrubium*, **Lauraceae:** *Cryptocarya*, **Linaceae:** *Anisadenia*, *Linum*, *Reinwardtia*, **Loranthaceae:** *Dendrophthoe*, *Loranthus*, *Macrosolen*, *Moquinella*, *Peraxilla*, *Scurrula*, *Septulina*, *Taxillus*, *Tupeia*, **Lythraceae:** *Ammannia*, *Cuphea*, *Duabanga*, *Lagerstroemia*, *Lawsonia*, *Lythrum*, *Punica*, *Rotala*, *Trapa*, *Woodfordia*, **Malpighiaceae:** *Aspidopterys*, *Hiptage*, **Malvaceae:** *Abroma*, *Abutilon*, *Adansonia*, *Alcea*, *Anisodonteia*, *Bombax*, *Byttneria*, *Corchorus*, *Entelea*, *Eriolaena*, *Firmiana*, *Gossypium*, *Grewia*, *Helicteres*, *Hermannia*, *Hibiscus*, *Hoheria*, *Kydia*, *Lavatera*, *Malva*, *Malvaviscus*, *Melochia*, *Pavonia*, *Plagianthus*, *Pterospermum*, *Sida*, *Sparmannia*, *Sterculia*, *Thespesia*, *Triumfetta*, *Urena*, **Melastomataceae:** *Medinilla*, *Medastoma*, *Osbeckia*, **Meliaceae:** *Aglaia*, *Azadirachta*, *Chukrasia*, *Cipadessa*, *Dysoxylum*, *Ekebergia*, *Melia*, *Munronia*, *Nymania*, *Toona*, *Trichilia*, **Melanthaceae:** *Melanthus*, **Moraceae:** *Artocarpus*, *Ficus*, *Maclura*, *Morus*, *Streblus*, **Moringaceae:** *Moringa*, **Myricaceae:** *Morella*, *Callistemon*, *Eucalyptus*, *Eugenia*, *Kunzea*, *Leptospermum*, *Lophomyrtus*, *Metrosideros*, *Neomyrtus*, *Psidium*, *Syzygium*, **Neuradaceae:** *Grielum*, **Ochnaceae:** *Ochna*, **Olacaceae:** *Erythralium*, *Olax*, *Schoepfia*, **Oliniaceae:** *Olinia*, **Onagraceae:** *Chamerion*, *Circaea*, *Epilobium*, *Ludwigia*, *Oenothera*, **Opliliaceae:** *Cansjera*, *Lepionurus*, **Oxalidaceae:** *Biophytum*, *Oxalis*, **Paeoniaceae:** *Paeonia*, **Parnassiaceae:** *Parnassia*, **Passifloraceae:** *Passiflora*, **Penaeaceae:** *Brachysiphon*, *Endonema*, *Glichrocolla*, *Penaea*, *Saltera*, *Sonderothamnus*, *Stylapteris*, **Phyllanthaceae:** *Aporusa*, **Poaceae:** *Australopyrum*, **Podostemaceae:** *Hydrobryum*, **Polygalaceae:** *Muraltia*, *Polygala*, *Securidaca*, **Resedaceae:** *Oligomeris*, **Rhamnaceae:** *Berchemia*, *Discaria*, *Gouania*, *Helinus*, *Hovenia*, *Noltea*, *Paliurus*, *Phyllica*, *Pomaderris*, *Rhamnella*, *Rhamnus*, *Sageretia*, *Scutia*, *Ventilago*, *Ziziphus*, **Rhizophoraceae:** *Carallia*, **Rosaceae:** *Acaena*, *Agrimonia*, *Alchemilla*, *Arunco*, *Cliffortia*, *Cotoneaster*, *Crataegus*, *Drynaria*, *Eriobotrya*, *Filipendula*, *Fragaria*, *Geum*, *Malus*, *Neillia*, *Photinia*, *Santalum*, *Prinsepia*, *Prunus*, *Pygeum*, *Pyraecantha*, *Rosa*, *Rubus*, *Sanguisorba*, *Sibbaldia*, *Sorbaria*, *Sorbus*, *Spiraea*, **Rutaceae:** *Acmadenia*, *Adenandra*, *Aegle*, *Agathosma*, *Calodendrum*, *Citrus*, *Clausena*, *Coleonema*, *Diosma*, *Empleuridium*, *Empleurum*, *Eucaetis*, *Euodia*, *Glycosmis*, *Macrostylis*, *Melicope*, *Micromelum*, *Murraya*, *Ptaeroxylon*, *Ruta*, *Skimmia*, *Toddalia*, *Zanthoxylum*, **Salicaceae:** *Casearia*, *Dovyalis*, *Flacourtia*, *Gynocardia*, *Homalium*, *Kiggelaria*, *Populus*, *Salix*, *Scolopia*, *Trimeria*, *Xylosma*, **Salvadoraceae:** *Azima*, **Santalaceae:** *Arceuthobium*, *Dufrenoyia*, *Exocarpus*, *Korthalsella*, *Mida*, *Osyris*, *Pyralia*, *Rhoiicarpos*, *Santalum*, *Thesidium*, *Thesium*, *Viscum*, **Sapindaceae:** *Acer*, *Aesculus*, *Alectryon*, *Allophylus*, *Atalaya*, *Cardiospermum*, *Dodonaea*, *Erioglossum*, *Lepisanthes*, *Litchi*, *Pappea*, *Sapindus*, *Schleichera*, *Smelophyllum*, **Saxifragaceae:** *Astilbe*, *Bergenia*, *Chrysosplenium*, *Rodgersia*, *Saxifraga*, *Tiarella*, **Simaroubaceae:** *Brucea*, *Picrasma*, **Stachyuraceae:** *Stachyurus*, **Staphyleaceae:** *Staphylea*, *Turpinia*, **Tamaricaceae:** *Myricaria*, **Thymelaeaceae:** *Aquilaria*, *Daphne*, *Drapetes*, *Edgeworthia*, *Gnidia*, *Lachnaea*, *Passerina*, *Pimelea*, *Stellera*, *Struthiola*, *Wikstroemia*, **Tropaeolaceae:** *Tropaeolum*, **Ulmaceae:** *Celtis*, *Chaetachme*, *Holoptelea*, *Trema*, *Ulmus*, **Urticaceae:** *Boehmeria*, *Chamabainia*, *Dendrocnide*, *Didymodoxa*, *Droguetia*, *Elatostema*, *Forsskaolea*, *Girardinia*, *Gonostegia*, *Laportea*, *Lecanthus*, *Parietaria*, *Pilea*, *Poikilospermum*, *Procris*, *Urtica*, **Violaceae:** *Hybanthus*, *Melicytus*, *Viola*, **Vitaceae:** *Ampelocissus*, *Ampelopsis*, *Cayratia*, *Cissus*, *Cyphostemma*, *Leea*, *Parthenocissus*, *Rhoicissus*, *Tetragium*, *Vitis*, **Zygophyllaceae:** *Augea*, *Seetzenia*, *Tribulus*, *Zygophyllum*.

Table S8. Plant genera with high priority for future screening for conditions related to cardiovascular/blood purity problems

These genera were included in the hot nodes of at least two of the study regions (Nepal, New Zealand, and the Cape of South Africa) for this category of conditions.

Agaveaceae: *Cordylina*, **Anacardiaceae:** *Anacardium*, *Buchanania*, *Cotinus*, *Dobinea*, *Heeria*, *Laurophyllum*, *Mangifera*, *Pistacia*, *Rhus*, *Semecarpus*, *Spondias*, **Asteraceae:** *Taraxacum*, **Fabaceae:** *Carmichaelia*, *Sophora*, **Hemerocallidaceae:** *Phormium*, **Loranthaceae:** *Loranthus*, **Malvaceae:** *Alcea*, **Meliaceae:** *Aglaia*, *Azadirachta*, *Chukrasia*, *Cipadessa*, *Dysoxylum*, *Ekebergia*, *Melia*, *Munronia*, *Nymania*, *Toona*, *Trichilia*, **Myrtaceae:** *Leptospermum*, **Rhamnaceae:** *Pomaderris*, **Rosaceae:** *Acaena*, **Rutaceae:** *Acmadenia*, *Adenandra*, *Aegle*, *Agathosma*, *Calodendrum*, *Citrus*, *Clausena*, *Coleonema*, *Diosma*, *Empleurum*, *Eucaetis*, *Euodia*, *Glycosmis*, *Macrostylis*, *Melicope*, *Micromelum*, *Murraya*, *Ptaeroxylon*, *Ruta*, *Skimmia*, *Toddalia*, *Zanthoxylum*, **Sapindaceae:** *Acer*, *Aesculus*, *Alectryon*, *Allophylus*, *Atalaya*, *Cardiospermum*, *Dodonaea*, *Erioglossum*, *Lepisanthes*, *Litchi*, *Pappea*, *Sapindus*, *Schleichera*, *Smelophyllum*, **Simaroubaceae:** *Brucea*, *Picrasma*, **Violaceae:** *Melicytus*.

Table S9. Plant genera with high priority for future screening for conditions related to dentistry/mouth problems

These genera were included in the hot nodes of at least two of the study regions (Nepal, New Zealand, and the Cape of South Africa) for this category of conditions.

Achariaceae: *Acharia*, *Ceratosicyos*, **Amaranthaceae:** *Psilotrichum*, **Anacardiaceae:** *Anacardium*, *Buchanania*, *Cotinus*, *Dobinea*, *Heeria*, *Laurophyllum*, *Man-gifera*, *Pistacia*, *Rhus*, *Semecarpus*, *Spondias*, **Apocynaceae:** *Telosma*, **Asteraceae:** *Marasmodes*, *Myriactis*, **Begoniaceae:** *Begonia*, *Berberis*, *Mahonia*, *Podophyl-lum*, **Betulaceae:** *Alnus*, *Betula*, *Carpinus*, *Corylus*, **Boraginaceae:** *Myosotis*, **Brassicaceae:** *Alliaria*, *Arabidopsis*, *Arabis*, *Barbarea*, *Brassica*, *Braya*, *Cadaba*, *Capparis*, *Cap-sella*, *Cardamine*, *Chamira*, *Christolea*, *Cleome*, *Crateva*, *Descurainia*, *Desideria*, *Dilophia*, *Diplo-taxis*, *Dontostemon*, *Draba*, *Erysimum*, *Eutrema*, *Hedinia*, *Heliophila*, *Iberis*, *Lepidium*, *Lignariella*, *Maerua*, *Megacarpaea*, *Microsymbrium*, *Nasturtium*, *Notothlaspi*, *Pachycladon*, *Pegaeophyton*, *Phaeo-nychium*, *Raphanus*, *Rorippa*, *Sisymbrium*, *Thlaspi*, *Torularia*, **Cannabaceae:** *Cannabis*, *Humulus*, **Caricaceae:** *Carica*, **Casuarinaceae:** *Casuarina*, **Celastraceae:** *Bhesa*, *Cassine*, *Celastrus*, *Elaeodendron*, *Euonymus*, *Gloveria*, *Gymnosporia*, *Lauridia*, *Lophopetalum*, *Maurocenia*, *Maytenus*, *Mystroxy-lon*, *Putterlickia*, *Re-issantia*, *Robsonodendron*, *Stackhousia*, **Circaeasteraceae:** *Circaeaster*, **Clusiaceae:** *Garcinia*, *Hypericum*, *Mesua*, **Combretaceae:** *Anogeissus*, *Combretum*, *Quis-qualis*, *Terminalia*, **Coriariaceae:** *Coriaria*, **Corynocarpaceae:** *Corynocarpus*, **Crassulaceae:** *Adromischus*, *Cotyledon*, *Crassula*, *Kalanchoe*, *Sedum*, **Cucurbitaceae:** *Benincasa*, *Biswarea*, *Bryonia*, *Citrullus*, *Coccinia*, *Cucumis*, *Cucurbita*, *Cyclanthera*, *Diplocyclos*, *Edgaria*, *Gomphogyne*, *Gymnopetalum*, *Gynostemma*, *Herpe-tospermum*, *Kedrostis*, *Lagenaria*, *Luffa*, *Momordica*, *Mukia*, *Neoalsomitra*, *Sechium*, *Sicyos*, *Solena*, *Thladiantha*, *Trichosanthes*, *Zehneria*, **Cunoniaceae:** *Ackama*, *Cunonia*, *Platylophus*, *Weinmannia*, **Daphniphyllaceae:** *Daphniphyllum*, **Datisceae:** *Datisca*, *Tetrameles*, **Dipterocarpaceae:** *Shorea*, **Elaeagnaceae:** *Elaeagnus*, *Hippophae*, **Elaeocarpaceae:** *Aristolotelia*, *Elaeocarpus*, *Sloanea*, **Elatinaceae:** *Bergia*, *Elatine*, **Escalloniaceae:** *Ixerba*, **Euphorbiaceae:** *Acalypha*, *Ad-enocline*, *Alchornea*, *Aleurites*, *Andrachne*, *Antidesma*, *Aporosa*, *Baccaurea*, *Baliospermum*, *Bischofia*, *Breynia*, *Chrozophora*, *Cleidion*, *Croton*, *Dalechampia*, *Euphorbia*, *Excoecaria*, *Flueggea*, *Glochidion*, *Homalanthus*, *Hyaenanche*, *Jatropha*, *Lachnostylis*, *Leidesia*, *Macaranga*, *Mallotus*, *Mercurialis*, *Ostodes*, *Phyllanthus*, *Poranthera*, *Putranjiva*, *Ricinus*, *Sapium*, *Sauropus*, *Securinega*, *Seidelia*, *Tragia*, *Trewia*, **Fabaceae:** *Abrus*, *Acacia*, *Acrocarpus*, *Aeschyno-mene*, *Albizia*, *Alysicarpus*, *Amphicar-paea*, *Amphithalea*, *Apios*, *Arachis*, *Argyrolobium*, *Aspalathus*, *Astragalus*, *Atylosia*, *Bauhinia*, *Bolusafr*, *Butea*, *Caesalpi-nia*, *Cajanus*, *Calpurnia*, *Campylotropis*, *Canavalia*, *Caragana*, *Carmichaelia*, *Cassia*, *Chamaecrista*, *Chesneya*, *Cicer*, *Clianthus*, *Cochlianthus*, *Codariocalyx*, *Colutea*, *Crotalaria*, *Cyclopia*, *Cytisus*, *Dalbergia*, *Delonix*, *Derris*, *Desmodium*, *Dipogon*, *Dolichos*, *Dumasia*, *Dunbaria*, *Entada*, *Eriosema*, *Eryth-rina*, *Flemingia*, *Galactia*, *Geissaspis*, *Genista*, *Glycine*, *Glycyrrhiza*, *Gueldenstaedtia*, *Hedysarum*, *Hypocalyptus*, *Indigofera*, *Kennedia*, *Lablab*, *Lathyrus*, *Lebeck-ia*, *Lens*, *Lespedeza*, *Lessertia*, *Leucaena*, *Liparia*, *Lotononis*, *Lotus*, *Lupinus*, *Macrotyloma*, *Medicago*, *Melilotus*, *Melolobium*, *Millettia*, *Mimosa*, *Montigena*, *Mucuna*, *Ormosia*, *Otholobium*, *Oxytropis*, *Paracalyx*, *Paraserianthes*, *Parochetus*, *Phaseolus*, *Piptanthus*, *Pisum*, *Pithecellobium*, *Podalyria*, *Polhillia*, *Pongamia*, *Pterocarpus*, *Pueraria*, *Rafnia*, *Rhynchosia*, *Robinia*, *Saraca*, *Schotia*, *Senna*, *Sesbania*, *Shuteria*, *Smithia*, *Sophora*, *Spatholobus*, *Stirtonanthus*, *Tadehagi*, *Tam-arindus*, *Tephrosia*, *Thermopsis*, *Trifolium*, *Trigonella*, *Uraria*, *Vicia*, *Vigna*, *Virgilia*, *Wiborgia*, *Wisteria*, *Xiphos-theca*, *Zornia*, *Castanopsis*, *Lithocarpus*, *Notho-fagus*, *Quercus*, **Geissolomataceae:** *Geissoloma*, **Geraniaceae:** *Erodium*, *Geranium*, *Monsonia*, *Pelargonium*, **Grossulariaceae:** *Ribes*, **Haloragaceae:** *Gonocarpus*, *Haloragis*, **Hamamelidaceae:** *Exbucklandia*, *Trichocephalus*, *Trichocladus*, **Juglandaceae:** *Engelhardia*, *Juglans*, **Lardizabala-ceae:** *Akebia*, *Decaisnea*, *Holboellia*, **Lauraceae:** *Cryptocarya*, **Linaceae:** *Anisadenia*, *Linum*, *Reinwardtia*, **Loranthaceae:** *Dendrophthoe*, *Loranthus*, *Macrosolen*, *Moquiniella*, *Peraxilla*, *Scurrula*, *Septulina*, *Taxillus*, *Tupeia*, *Ammannia*, **Lythraceae:** *Cuphea*, *Duabanga*, *Lagerstroemia*, *Lawsonia*, *Lythrum*, *Punica*, *Rotala*, *Trapa*, *Woodfordia*, **Malpighiaceae:** *Aspidopterys*, *Hiptage*, **Malvaceae:** *Abroma*, *Abutilon*, *Adansonia*, *Alcea*, *Anisodonte*, *Bombax*, *Byttneria*, *Corchorus*, *Entelea*, *Eriolaena*, *Firmiana*, *Gossypium*, *Grewia*, *Helicteres*, *Hermannia*, *Hibiscus*, *Hoheria*, *Kydia*, *Lavatera*, *Malva*, *Malvaviscus*, *Melochia*, *Pavonia*, *Plagianthus*, *Pterospermum*, *Sida*, *Sparrmannia*, *Sterculia*, *Thespesia*, *Triumfetta*, *Urena*, **Melastomataceae:** *Medinilla*, *Melastoma*, *Osbeckia*, **Meliaceae:** *Aglai*, *Azadirachta*, *Chukrasia*, *Cipadessa*, *Dysoxylum*, *Ekebergia*, *Melia*, *Munronia*, *Nymania*, *Toona*, *Trichilia*, **Meliantaceae:** *Melianthus*, **Menispermaceae:** *Antizoma*, *Cissampelos*, *Cocculus*, *Parabaena*, *Pericam-pylus*, *Stephania*, *Tiliacora*, *Tinospora*, **Moraceae:** *Artocarpus*, *Ficus*, *Maclura*, *Morus*, *Streblus*, **Moringaceae:** *Moringa*, **Myoporaceae:** *Myoporum*, **Myricaceae:** *Morella*, **Myrtaceae:** *Callistemon*, *Eucalyptus*, *Eugenia*, *Leptospermum*, *Lophomyrtus*, *Metrosideros*, *Neomyrtus*, *Psidium*, *Syzygium*, **Neuradaceae:** *Gri-elium*, **Ochnaceae:** *Ochna*, **Olacaceae:** *Erythralium*, *Olax*, *Schoepfia*, **Oliniaceae:** *Olinia*, **Onagraceae:** *Chamerion*, *Circaea*, *Epilobium*, *Ludwigia*, *Oenothera*, **Opiliaceae:** *Cansjera*, *Lepionurus*, **Oxalidaceae:** *Biophytum*, *Oxalis*, **Paeoniaceae:** *Paeonia*, **Papaveraceae:** *Argemone*, *Corydalis*, *Cysticapnos*, *Dicentra*, *Dicra-nostigma*, *Hypecoum*, *Meconopsis*, *Papaver*, *Trigonocapnos*, **Parnassiaceae:** *Parnassia*, **Passifloraceae:** *Passiflora*, **Penaeaceae:** *Brachysiphon*, *Endonema*, *Glis-chrocolla*, *Penaea*, *Saltera*, *Sonderothamnus*, *Stylapterus*, **Poaceae:** *Australopyrum*, **Podostemaceae:** *Hydrobryum*, **Polygalaceae:** *Muraltia*, *Polygala*, *Securidaca*, **Ranunculaceae:** *Aconitum*, *Actaea*, *Adonis*, *Anemone*, *Aquilegia*, *Callianthemum*, *Caltha*, *Cimicifuga*, *Clematis*, *Delphinium*, *Halerpestes*, *Isopyrum*, *Naravelia*, *Nigella*, *Oxygraphis*, *Paraquilegia*, *Ranunculus*, *Thalictrum*, *Trollius*, **Resedaceae:** *Oligomeris*, **Rhamnaceae:** *Berchemia*, *Discaria*, *Gouania*, *Helinus*, *Hovenia*, *Noltea*, *Paliurus*, *Phyllica*, *Pomaderris*, *Rhamnella*, *Rhamnus*, *Sageretia*, *Scutia*, *Ventilago*, *Ziziphus*, **Rhizophoraceae:** *Carallia*, **Rosaceae:** *Acaena*, *Agrimonia*, *Alchemilla*, *Aruncus*, *Cliffortia*, *Cotoneaster*, *Crataegus*, *Docynia*, *Eriobotrya*, *Filipendula*, *Fragaria*, *Geum*, *Malus*, *Neillia*, *Photinia*, *Potentilla*, *Prinsepia*, *Prunus*, *Pygeum*, *Pyracantha*, *Rosa*, *Rubus*, *Sanguisorba*, *Sibbaldia*, *Sorbaria*, *Sorbus*, *Spiraea*, **Rubiaceae:** *Psychotria*, **Rutaceae:** *Acmadenia*, *Adenandra*, *Aegle*, *Agathosma*, *Calodendrum*, *Citrus*, *Clausena*, *Coleonema*, *Diosma*, *Empleuridium*, *Empleurum*, *Euchaetis*, *Euodia*, *Glycosmis*, *Macrostylis*, *Melicope*, *Micromelum*, *Murraya*, *Ptaeroxylon*, *Ruta*, *Skimmia*, *Toddalia*, *Zanthoxylum*, **Salicaceae:** *Casearia*, *Dovyalis*, *Flacourtia*, *Gynocardia*, *Homalium*, *Kiggelaria*, *Populus*, *Salix*, *Scolopia*, *Trimeria*, *Xylosma*, **Salvadoraceae:** *Azima*, **Santalaceae:** *Arceuthobium*, *Dufrenoya*, *Exocarpus*, *Korthalsella*, *Mida*, *Osyris*, *Pyrularia*, *Rhoiacarpus*, *Santalum*, *Thesidium*, *Thesium*, **Sapindaceae:** *Acer*, *Aesculus*, *Alectryon*, *Allophylus*, *Atalaya*, *Cardiospermum*, *Dodonaea*, *Erioglossum*, *Lepisanthes*, *Litchi*, *Pappea*, *Sapindus*, *Schleichera*, *Smelophyllum*, **Saxifragaceae:** *Astilbe*, *Bergenia*, *Chrysosplenium*, *Rodgersia*, *Saxifraga*, *Tiarella*, **Scrophulariaceae:** *Lin-dernia*, *Torenia*, **Simaroubaceae:** *Brucea*, *Picrasma*, **Stachyuraceae:** *Stachyurus*, **Staphyleaceae:** *Staphylea*, *Turpinia*, **Tamaricaceae:** *Myricaria*, **Thymelaeaceae:** *Aquilaria*, *Daphne*, *Drapetes*, *Edgeworthia*, *Gnidia*, *Lachnaea*, *Passerina*, *Pimelea*, *Stellera*, *Struthiola*, *Wikstroemia*, **Tropaeolaceae:** *Tropaeolum*, **Ulmaceae:** *Celtis*, *Chaetachme*, *Holoptelea*, *Trema*, *Ulmus*, **Urticaceae:** *Boehmeria*, *Chamabainia*, *Dendrocnide*, *Didymodoxa*, *Droguetia*, *Elatostema*, *Forsskaolea*, *Girardi-nia*, *Gonostegia*, *Laportea*, *Lecanthus*, *Parietaria*, *Pilea*, *Poikilospermum*, *Procris*, *Urtica*, **Violaceae:** *Hybanthus*, *Meliccytus*, *Viola*, **Vitaceae:** *Ampelocissus*, *Am-pelopsis*, *Cayratia*, *Cissus*, *Cyphostemma*, *Leea*, *Parthenocissus*, *Rhoicissus*, *Tetrastigma*, *Vitis*, **Zygophyllaceae:** *Augea*, *Seetzenia*, *Tribulus*, *Zygophyllum*.

Table S10. Plant genera with high priority for future screening for conditions related to gastrointestinal problems

These genera were included in the hot nodes of at least two of the study regions (Nepal, New Zealand, and the Cape of South Africa) for this category of conditions.

Anacardiaceae: *Anacardium*, *Buchanania*, *Cotinus*, *Dobinea*, *Heeria*, *Laurophyllus*, *Mangifera*, *Pistacia*, *Rhus*, *Semecarpus*, *Spondias*, **Apocynaceae:** *Telosma*, **Brassicaceae:** *Alliaria*, *Arabidopsis*, *Arabis*, *Barbarea*, *Brassica*, *Braya*, *Cadaba*, *Capparis*, *Capsella*, *Cardamine*, *Chamira*, *Christolea*, *Cleome*, *Crateva*, *Descurainia*, *Desideria*, *Dilophia*, *Diploaxis*, *Dontostemon*, *Draba*, *Erysimum*, *Hedinia*, *Heliophila*, *Iberis*, *Lepidium*, *Lignariella*, *Maerua*, *Megacarpaea*, *Microsisymbrium*, *Nasturtium*, *Notothlaspi*, *Pachycladon*, *Pegaeophyton*, *Phaeonychium*, *Raphanus*, *Rorippa*, *Sisymbrium*, *Thlaspi*, *Torularia*, **Caricaceae:** *Carica*, **Combretaceae:** *Anogeissus*, *Combretum*, *Quisqualis*, *Terminalia*, **Cucurbitaceae:** *Benincasa*, *Bryonia*, *Citrullus*, *Coccinia*, *Cucumis*, *Diplocyclos*, *Kedrostis*, *Lagenaria*, *Mukia*, *Solena*, *Zehneria*, **Cunoniaceae:** *Ackama*, *Cunonia*, *Platylophus*, *Weinmannia*, **Dipterocarpaceae:** *Shorea*, **Elaeocarpaceae:** *Aristotelia*, *Elaeocarpus*, *Sloanea*, **Geraniaceae:** *Erodium*, *Geranium*, *Monsonia*, *Pelargonium*, **Lamiaceae:** *Ballota*, *Leonotis*, *Marrubium*, **Lythraceae:** *Ammannia*, *Cuphea*, *Duabanga*, *Lagerstroemia*, *Lawsonia*, *Lythrum*, *Punica*, *Rotala*, *Trapa*, *Woodfordia*, **Malvaceae:** *Abroma*, *Abutilon*, *Adansonia*, *Alcea*, *Anisodonte*, *Bombax*, *Byttneria*, *Corchorus*, *Entelea*, *Eriolaena*, *Gossypium*, *Grewia*, *Helicteres*, *Hermannia*, *Hibiscus*, *Hoheria*, *Kydia*, *Lavatera*, *Malva*, *Malvaviscus*, *Melochia*, *Pavonia*, *Plagianthus*, *Pterospermum*, *Sida*, *Sparrmannia*, *Sterculia*, *Thespesia*, *Triumfetta*, *Urena*, **Melastomataceae:** *Medinilla*, *Melastoma*, *Osbeckia*, **Meliaceae:** *Aglai*, *Azadirachta*, *Chukrasia*, *Cipadessa*, *Dysoxylum*, *Ekebergia*, *Melia*, *Munronia*, *Nymania*, *Toona*, *Trichilia*, **Meliantaceae:** *Melianthus*, **Moringaceae:** *Moringa*, **Myrtaceae:** *Callistemon*, *Eucalyptus*, *Eugenia*, *Kunzea*, *Leptospermum*, *Lophomyrtus*, *Metrosideros*, *Neomyrtus*, *Psidium*, *Syzygium*, **Neuradaceae:** *Grielum*, **Oliniaceae:** *Olinia*, **Onagraceae:** *Chamerion*, *Circaea*, *Epilobium*, *Ludwigia*, *Oenothera*, **Oxalidaceae:** *Biophytum*, *Oxalis*, **Passifloraceae:** *Passiflora*, **Penaeaceae:** *Brachysiphon*, *Endonema*, *Glischrocolla*, *Penaea*, *Saltera*, *Sonderothamnus*, **Pentaceae:** *Stylapterus*, **Polygonaceae:** *Emex*, *Oxyria*, *Rheum*, *Rumex*, **Resedaceae:** *Oligomeris*, **Rosaceae:** *Acaena*, *Agrimonia*, *Alchemilla*, *Cliffortia*, *Filipendula*, *Fragaria*, *Geum*, *Potentilla*, *Rosa*, *Rubus*, *Sanguisorba*, *Sibbaldia*, **Rutaceae:** *Acmadenia*, *Adenandra*, *Aegle*, *Agathosma*, *Calodendrum*, *Citrus*, *Clausena*, *Coleonema*, *Diosma*, *Empleurum*, *Eucaetis*, *Euodia*, *Glycosmis*, *Macrostylis*, *Melicope*, *Micromelum*, *Murraya*, *Ptaeroxylon*, *Ruta*, *Skimmia*, *Toddalia*, *Zanthoxylum*, **Salicaceae:** *Populus*, *Salix*, *Trimeria*, **Salvadoraceae:** *Azima*, **Sapindaceae:** *Acer*, *Aesculus*, *Alectryon*, *Allophylus*, *Atalaya*, *Cardiospermum*, *Dodonaea*, *Erioglossum*, *Lepisanthes*, *Litchi*, *Pappea*, *Sapindus*, *Schleichera*, *Smelophyllum*, **Simaroubaceae:** *Brucea*, *Picrasma*, **Thymelaeaceae:** *Aquilaria*, *Daphne*, *Drapetes*, *Edgeworthia*, *Gnidia*, *Lachnaea*, *Passerina*, *Pimelea*, *Stellera*, *Struthiola*, *Wikstroemia*, **Tropaeolaceae:** *Tropaeolum*, **Violaceae:** *Hybanthus*, *Melicytus*, *Viola*.

Table S11. Plant genera with high priority for future screening for conditions related to general health problems

These genera were included in the hot nodes of at least two of the study regions (Nepal, New Zealand, and the Cape of South Africa) for this category of conditions.

Achariaceae: *Acharia*, *Ceratosicyos*, **Agavaceae:** *Agave*, *Arthropodium*, *Caesia*, *Chlorophytum*, *Cordyline*, *Herpolirion*, **Aizoaceae:** *Psilocaulon*, **Alliaceae:** *Agapanthus*, *Allium*, *Milula*, *Tulbaghia*, **Amaranthaceae:** *Achyranthes*, *Acroglochin*, *Aerva*, *Alternanthera*, *Amaranthus*, *Beta*, *Bosea*, *Celosia*, *Chenopodium*, *Deeringia*, *Gomphrena*, *Iresine*, *Manochlamys*, *Psilotrichum*, *Pupalia*, **Amaryllidaceae:** *Amaryllis*, *Ammocharis*, *Apodolirion*, *Boophone*, *Brunsvigia*, *Clivia*, *Crinum*, *Cyrtanthus*, *Haemanthus*, *Nerine*, *Pancratium*, *Scadoxus*, *Zephyranthes*, **Anacardiaceae:** *Anacardium*, *Buchanania*, *Cotinus*, *Dobinea*, *Heeria*, *Laurophyllum*, *Mangifera*, *Pistacia*, *Rhus*, *Semecarpus*, *Spondias*, **Apocynaceae:** *Telosma*, **Araucariaceae:** *Agathis*, *Araucaria*, **Asparagaceae:** *Asparagus*, *Bowiea*, *Dipcadi*, *Drimia*, *Eucomis*, *Lachenalia*, *Ledebouria*, *Ornithogalum*, *Spetaea*, *Urginea*, *Veltheimia*, **Asphodelaceae:** *Aloe*, *Asphodelus*, *Astroloba*, *Bulbine*, *Bulbinella*, *Gasteria*, *Haworthia*, *Kniphofia*, *Trachyandra*, **Asteraceae:** *Marasmodes*, *Myriactis*, **Begoniaceae:** *Begonia*, **Betulaceae:** *Alnus*, *Betula*, *Carpinus*, *Corylus*, **Brassicaceae:** *Alliaria*, *Arabidopsis*, *Arabis*, *Barbarea*, *Brassica*, *Braya*, *Cadaba*, *Capparis*, *Capsella*, *Cardamine*, *Chamira*, *Christolea*, *Cleome*, *Crateva*, *Descurainia*, *Desideria*, *Dilophia*, *Diplotaxis*, *Dontostemon*, *Draba*, *Erysimum*, *Eutrema*, *Hedinia*, *Heliophila*, *Iberis*, *Lepidium*, *Lignariella*, *Maerua*, *Megacarpaea*, *Microsymbrium*, *Nasturtium*, *Notothlaspi*, *Pachycladon*, *Pegaephyton*, *Pheonychium*, *Raphanus*, *Rorippa*, *Sisymbrium*, *Thlaspi*, *Torularia*, **Cannabaceae:** *Cannabis*, *Humulus*, **Caricaceae:** *Carica*, **Caryophyllaceae:** *Pseudostellaria*, **Casuarinaceae:** *Casuarina*, **Celastraceae:** *Bhesa*, *Cassine*, *Celastrus*, *Elaeodendron*, *Euonymus*, *Gloveria*, *Gymnosporia*, *Lauridia*, *Lophopetalum*, *Maurocentia*, *Maytenus*, *Mystroxydon*, *Putterlickia*, *Reissantia*, *Robsonodendron*, *Stackhousia*, **Clusiaceae:** *Garcinia*, *Hypericum*, *Mesua*, **Combretaceae:** *Anogeissus*, *Combretum*, *Quisqualis*, *Terminalia*, **Coriariaceae:** *Coriaria*, **Corynocarpaceae:** *Corynocarpus*, **Crassulaceae:** *Adromischus*, *Cotyledon*, *Crassula*, *Kalanchoe*, *Sedum*, **Cucurbitaceae:** *Benincasa*, *Biswarea*, *Bryonia*, *Citrullus*, *Coccinia*, *Cucumis*, *Cucurbita*, *Cyclanthera*, *Diplocyclos*, *Edgaria*, *Gomphogyne*, *Gymnopetalum*, *Gynostemma*, *Herpetospermum*, *Kedrostis*, *Lagenaria*, *Luffa*, *Momordica*, *Mukia*, *Neoalsomitra*, *Sechium*, *Sicyos*, *Solena*, *Thladiantha*, *Trichosanthes*, *Zehneria*, **Cunoniaceae:** *Ackama*, *Cunonia*, *Platylophus*, *Weinmannia*, **Cupressaceae:** *Cupressus*, *Juniperus*, *Libocedrus*, **Cycadaceae:** *Cycas*, **Daphniphyllaceae:** *Daphniphyllum*, **Datiaceae:** *Datisca*, *Tetrameles*, **Dipterocarpaceae:** *Shorea*, **Elaeagnaceae:** *Elaeagnus*, *Hippophae*, **Elaeocarpaceae:** *Aristotelia*, *Elaeocarpus*, *Sloanea*, **Elatinaceae:** *Bergia*, *Elatine*, **Ephedraceae:** *Agapetes*, *Archgeria*, *Cyathodes*, *Dracophyllum*, *Epacris*, *Gaultheria*, *Leucopogon*, *Lyonia*, *Pentachondra*, *Pieris*, *Vaccinium*, **Escalloniaceae:** *Ixerba*, **Euphorbiaceae:** *Acalypha*, *Adenocline*, *Alchornea*, *Aleurites*, *Andrachne*, *Antidesma*, *Baccaurea*, *Baliospermum*, *Bischofia*, *Breynia*, *Bridelia*, *Chrozophora*, *Cleidion*, *Clutia*, *Croton*, *Dalechampia*, *Euphorbia*, *Excoecaria*, *Flueggea*, *Glochidion*, *Homalanthus*, *Hyacanthaceae:* *Jatropha*, *Lachnostylis*, *Leidesia*, *Macaranga*, *Mallotus*, *Mercurialis*, *Ostodes*, *Phyllanthus*, *Poranthera*, *Putranjiva*, *Ricinus*, *Sapium*, *Sauropus*, *Securinega*, *Seidelia*, *Tragia*, *Trewia*, **Fabaceae:** *Abrus*, *Acacia*, *Acrocarpus*, *Aeschynomene*, *Albizia*, *Alysicarpus*, *Amphicarpaea*, *Amphithalea*, *Apios*, *Arachis*, *Argyrolobium*, *Aspalathus*, *Astragalus*, *Atylosia*, *Bauhinia*, *Bolusafrax*, *Butea*, *Caesalpinia*, *Cajanus*, *Calpurnia*, *Campylotropis*, *Canavalia*, *Caragana*, *Carmichaelia*, *Cassia*, *Chamaecrista*, *Chesneya*, *Cicer*, *Clianthus*, *Clitoria*, *Cochlianthus*, *Codariocalyx*, *Colutea*, *Crotalaria*, *Cyclopia*, *Cytisus*, *Dalbergia*, *Delonix*, *Derris*, *Desmodium*, *Dipogon*, *Dolichos*, *Dumasia*, *Dunbaria*, *Entada*, *Eriosema*, *Erythrina*, *Flemingia*, *Galactia*, *Geissaspis*, *Genista*, *Glycine*, *Glycyrrhiza*, *Guelldenstaedtia*, *Hedysarum*, *Hypocalyptus*, *Indigofera*, *Kennedia*, *Lathyrus*, *Lebeckia*, *Lens*, *Lespedeza*, *Lessertia*, *Leucaena*, *Liparia*, *Lotononis*, *Lotus*, *Lupinus*, *Macrotyloma*, *Medicago*, *Melilotus*, *Melolobium*, *Millettia*, *Mimosa*, *Montigena*, *Mucuna*, *Ormosia*, *Otholobium*, *Oxytropis*, *Paracalyx*, *Paraserianthes*, *Parochetus*, *Phaseolus*, *Piptanthus*, *Pisum*, *Pithecellobium*, *Podalyria*, *Polhillia*, *Pongamia*, *Pterocarpus*, *Pueraria*, *Rafnia*, *Rhynchosia*, *Robinia*, *Saraca*, *Schotia*, *Senna*, *Sesbania*, *Shuteria*, *Smithia*, *Sophora*, *Spatholobus*, *Stirtonanthus*, *Tadehagi*, *Tamarindus*, *Tephrosia*, *Thermopsis*, *Trifolium*, *Trigonella*, *Urania*, *Vicia*, *Vigna*, *Sesbania*, *Virgilia*, *Wiborgia*, *Wisteria*, *Xenoscapa*, *Xiphotheca*, *Zornia*, *Castanopsis*, *Lithocarpus*, *Nothofagus*, *Quercus*, **Geissolomataceae:** *Geissoloma*, **Geraniaceae:** *Erodium*, *Geranium*, *Monsonia*, *Pelargonium*, **Ginkgoaceae:** *Ginkgo*, **Gnetaceae:** *Gnetum*, **Grossulariaceae:** *Ribes*, **Haloragaceae:** *Gonocarpus*, *Haloragis*, **Hamamelidaceae:** *Exbucklandia*, *Trichocladus*, **Hemerocallidaceae:** *Dianella*, *Hemerocallis*, *Phormium*, *Xeronema*, **Hydatellaceae:** *Trithuria*, **Iridaceae:** *Aristea*, *Babiana*, *Belamcanda*, *Bobartia*, *Chasmanthe*, *Crocasmia*, *Crocus*, *Dierama*, *Diets*, *Ferraria*, *Freesia*, *Geissorhiza*, *Gladiolus*, *Hesperantha*, *Iris*, *Ixia*, *Klattia*, *Lapeirousia*, *Libertia*, *Melasmaerula*, *Micranthus*, *Moraea*, *Pillansia*, *Romulea*, *Sparaxis*, *Springodea*, *Theerianthus*, *Tritonia*, *Tritoniopsis*, *Watsonia*, *Witsenia*, **Juglandaceae:** *Engelhardia*, *Juglans*, **Lauraceae:** *Cryptocarya*, **Linaceae:** *Anisadenia*, *Linum*, *Reinwardtia*, **Loranthaceae:** *Dendrophthoe*, *Loranthus*, *Macrosolen*, *Moquiuiella*, *Peraxilla*, *Scurrula*, *Septulina*, *Taxillus*, *Tupeia*, **Lythraceae:** *Ammannia*, *Cuphea*, *Duabanga*, *Lagerstroemia*, *Lawsonia*, *Lythrum*, *Punica*, *Rotala*, *Trapa*, *Woodfordia*, **Malpighiaceae:** *Aspidopterys*, *Hiptage*, **Malvaceae:** *Abronia*, *Abutilon*, *Adansonia*, *Alcea*, *Anisodonta*, *Bombax*, *Byttneria*, *Corchorus*, *Eriolaena*, *Firmiana*, *Gossypium*, *Grewia*, *Helicteres*, *Hermannia*, *Hibiscus*, *Hoheria*, *Kydia*, *Lavatera*, *Malva*, *Malvastrum*, *Melochia*, *Pavonia*, *Plagianthus*, *Pterospermum*, *Sida*, *Sparmannia*, *Sterculia*, *Thespesia*, *Triumfetta*, *Urena*, **Melastomataceae:** *Medinilla*, *Melastoma*, *Osbeckia*, **Meliaceae:** *Aglaiia*, *Azadirachta*, *Chukrasia*, *Cipadessa*, *Dysoxylum*, *Ekebergia*, *Melia*, *Munronia*, *Nymania*, *Toona*, *Trichillia*, **Melastomataceae:** *Medinilla*, *Melastoma*, *Osbeckia*, **Meliaceae:** *Aglaiia*, *Azadirachta*, *Chukrasia*, *Cipadessa*, *Dysoxylum*, *Ekebergia*, *Melia*, *Munronia*, *Nymania*, *Toona*, *Trichillia*, **Melastomataceae:** *Medinilla*, *Melastoma*, *Osbeckia*, **Meliaceae:** *Aglaiia*, *Azadirachta*, *Chukrasia*, *Cipadessa*, *Dysoxylum*, *Ekebergia*, *Melia*, *Munronia*, *Nymania*, *Toona*, *Trichillia*, **Melastomataceae:** *Medinilla*, *Melastoma*, *Osbeckia*, **Meliaceae:** *Aglaiia*, *Azadirachta*, *Chukrasia*, *Cipadessa*, *Dysoxylum*, *Ekebergia*, *Melia*, *Munronia*, *Nymania*, *Toona*, *Trichillia*, **Melastomataceae:** *Medinilla*, *Melastoma*, *Osbeckia*, **Meliaceae:** *Aglaiia*, *Azadirachta*, *Chukrasia*, *Cipadessa*, *Dysoxylum*, *Ekebergia*, *Melia*, *Munronia*, *Nymania*, *Toona*, *Trichillia*, **Melastomataceae:** *Medinilla*, *Melastoma*, *Osbeckia*

Table S12. Plant genera with high priority for future screening for conditions related to gynecological/fertility problems

These genera were included in the hot nodes of at least two of the study regions (Nepal, New Zealand, and the Cape of South Africa) for this category of conditions.

Agavaceae: *Agave*, *Arthropodium*, *Caesia*, *Chlorophytum*, *Cordylina*, *Herpolirion*, **Aizoaceae:** *Psilocaulon*, **Alliaceae:** *Agapanthus*, *Allium*, *Milula*, *Tulbaghia*, **Amaranthaceae:** *Achyranthes*, *Manochlamys*, *Pupalia*, **Amaryllidaceae:** *Amaryllis*, *Ammocharis*, *Apodolirion*, *Boophone*, *Brunsvigia*, *Clivia*, *Crinum*, *Cyrtanthus*, *Haemanthus*, *Nerine*, *Pancratium*, *Scadoxus*, *Zephyranthes*, **Araucariaceae:** *Agathis*, *Araucaria*, **Asparagaceae:** *Asparagus*, *Bowiea*, *Dipcadi*, *Drimia*, *Eucomis*, *Lachenalia*, *Ledebouria*, *Ornithogalum*, *Spetaea*, *Urginea*, *Veltheimia*, **Asphodelaceae:** *Aloe*, *Asphodelus*, *Astroloba*, *Bulbine*, *Bulbinella*, *Gasteria*, *Haworthia*, *Kniphofia*, *Trachyandra*, **Caryophyllaceae:** *Pseudostellaria*, **Combretaceae:** *Anogeissus*, *Combretum*, *Quisqualis*, *Terminalia*, **Coriariaceae:** *Coriaria*, **Corynocarpaceae:** *Corynocarpus*, **Cucurbitaceae:** *Benincasa*, *Bryonia*, *Citrullus*, *Coccinia*, *Cucumis*, *Diplocyclos*, *Kedrostis*, *Lagenaria*, *Mukia*, *Solena*, *Zehneria*, **Cupressaceae:** *Cryptomeria*, *Cupressus*, *Juniperus*, *Libocedrus*, **Cycadaceae:** *Cycas*, **Ebenaceae:** *Diospyros*, *Euclea*, **Ephedraceae:** *Ephedra*, **Ericaceae:** *Agapetes*, *Archgeria*, *Cyathodes*, *Dracophyllum*, *Epacris*, *Gaultheria*, *Leucopogon*, *Lyonia*, *Pentachondra*, *Pieris*, *Vaccinium*, **Geraniaceae:** *Erodium*, *Geranium*, *Monsonia*, *Pelargonium*, **Ginkgoaceae:** *Ginkgo*, **Gnetaceae:** *Gnetum*, **Hemerocallidaceae:** *Dianella*, *Hemerocallis*, *Phormium*, *Xeronema*, **Hydatellaceae:** *Trithuria*, **Iridaceae:** *Aristea*, *Babiana*, *Belamcanda*, *Bobartia*, *Chasmanthe*, *Crococsmia*, *Crocus*, *Dierama*, *Dietes*, *Ferraria*, *Freesia*, *Geissorhiza*, *Gladiolus*, *Hesperantha*, *Iris*, *Ixia*, *Klattia*, *Lapeirousia*, *Libertia*, *Melaspheerula*, *Micranthus*, *Moraea*, *Nivenia*, *Pillansia*, *Romulea*, *Sparaxis*, *Syringodea*, *Thereianthus*, *Tritonia*, *Tritoniopsis*, *Watsonia*, *Witsenia*, *Xenoscapa*, **Lauraceae:** *Cryptocarya*, **Lythraceae:** *Ammannia*, *Cuphea*, *Duabanga*, *Lagerstroemia*, *Lawsonia*, *Lythrum*, *Punica*, *Rotala*, *Trapa*, *Woodfordia*, **Melastomataceae:** *Medinilla*, *Melastoma*, *Osbeckia*, **Myrtaceae:** *Callistemon*, *Eucalyptus*, *Eugenia*, *Kunzea*, *Leptospermum*, *Lophomyrtus*, *Metrosideros*, *Neomyrtus*, *Psidium*, *Syzygium*, **Nymphaeaceae:** *Euryale*, *Nymphaea*, **Oliniaceae:** *Olinia*, **Onagraceae:** *Chamerion*, *Circaea*, *Epilobium*, *Ludwigia*, *Oenothera*, **Penaeaceae:** *Brachysiphon*, *Endonema*, *Glischrocolla*, *Penaea*, *Saltera*, *Sonderothamnus*, *Stylapterus*, **Philesiaceae:** *Behnia*, **Pinaceae:** *Abies*, *Cedrus*, *Larix*, *Larix*, *Picea*, *Pinus*, *Pseudotsuga*, *Tsuga*, **Plantaginaceae:** *Callitriche*, *Digitalis*, *Hippuris*, *Plantago*, **Podocarpaceae:** *Dacrycarpus*, *Dacrydium*, *Halocarpus*, *Lepidothamnus*, *Phyllocladus*, *Podocarpus*, *Prumnopitys*, **Polygonaceae:** *Aconogonon*, *Bistorta*, *Emex*, *Fagopyrum*, *Fallopia*, *Koenigia*, *Oxyria*, *Persicaria*, *Polygonum*, *Rheum*, *Rumex*, **Pontederiaceae:** *Eichhornia*, *Monochoria*, **Rosaceae:** *Acaena*, *Agrimonia*, *Alchemilla*, *Cliffortia*, *Filipendula*, *Fragaria*, *Geum*, *Potentilla*, *Rosa*, *Rubus*, *Sanguisorba*, *Sibbaldia*, **Ruscaceae:** *Campylandra*, *Dracaena*, *Eriospermum*, *Maianthemum*, *Ophiopogon*, *Peliosanthes*, *Polygonatum*, *Sansevieria*, *Smilacina*, *Tupistra*, **Schisandraceae:** *Schisandra*, **Scrophulariaceae:** *Antirrhinum*, *Calorhabdos*, *Hebe*, *Hemiphragma*, *Kickxia*, *Parahebe*, *Veronica*, **Taxaceae:** *Taxus*, **Tecophilaeaceae:** *Cyanella*, *Walleria*, **Verbenaceae:** *Chascanum*.

Table S13. Plant genera with high priority for future screening for conditions related to musculoskeletal problems

These genera were included in the hot nodes of at least two of the study regions (Nepal, New Zealand, and the Cape of South Africa) for this category of conditions.

Anacardiaceae: *Anacardium*, *Buchanania*, *Cotinus*, *Dobinea*, *Heeria*, *Laurophyllum*, *Mangifera*, *Pistacia*, *Rhus*, *Semecarpus*, *Spondias*, **Cucurbitaceae:** *Benincasa*, *Biswarea*, *Bryonia*, *Citrullus*, *Coccinia*, *Cucumis*, *Cucurbita*, *Cyclanthera*, *Diplocyclos*, *Edgaria*, *Gymnopetalum*, *Herpetospermum*, *Kedrostis*, *Lagenaria*, *Luffa*, *Mukia*, *Sechium*, *Sicyos*, *Solena*, *Trichosanthes*, *Zehneria*, **Geraniaceae:** *Erodium*, *Geranium*, *Monsonia*, *Pelargonium*, **Lamiaceae:** *Ajuga*, *Anisochilus*, *Anisomeles*, *Ballota*, *Clinopodium*, *Colebrookea*, *Coleus*, *Craniotome*, *Dracocephalum*, *Elsholtzia*, *Galeobdolon*, *Galeopsis*, *Glechoma*, *Gomphostemma*, *Lamium*, *Leonotis*, *Leonurus*, *Leucas*, *Marrubium*, *Melissa*, *Mentha*, *Micromeria*, *Mosla*, *Nepeta*, *Ocimum*, *Origanum*, *Perilla*, *Phlomis*, *Plectranthus*, *Pogostemon*, *Prunella*, *Salvia*, *Scutellaria*, *Stachys*, *Teucrium*, *Thymus*, **Melastomataceae:** *Medinilla*, *Melastoma*, *Osbeckia*, **Meliaceae:** *Aglaia*, *Azadirachta*, *Chukrasia*, *Cipadessa*, *Dysoxylum*, *Ekebergia*, *Melia*, *Munronia*, *Nymania*, *Toona*, *Trichilia*, **Myrtaceae:** *Callistemon*, *Eucalyptus*, *Eugenia*, *Kunzea*, *Leptospermum*, *Lophomyrtus*, *Metrosideros*, *Neomyrtus*, *Psidium*, *Syzygium*, **Oliniaceae:** *Olinia*, **Passifloraceae:** *Passiflora*, **Penaeaceae:** *Brachysiphon*, *Endonema*, *Glischrocolla*, *Penaea*, *Salt- era*, *Sonderothamnus*, *Stylapterus*, **Rosaceae:** *Acaena*, *Agrimonia*, *Alchemilla*, *Cliffortia*, *Filipendula*, *Fragaria*, *Geum*, *Potentilla*, *Rosa*, *Rubus*, *Sanguisorba*, *Sibbaldia*, **Rutaceae:** *Acmadenia*, *Adenandra*, *Aegle*, *Agathosma*, *Calodendrum*, *Citrus*, *Clausena*, *Coleonema*, *Diosma*, *Empleurum*, *Eucaetis*, *Euodia*, *Glycosmis*, *Macrostylis*, *Melicope*, *Micromelum*, *Murraya*, *Ptaeroxylon*, *Ruta*, *Skimmia*, *Toddalia*, *Zanthoxylum*, **Salicaceae:** *Dovyalis*, *Flacourtia*, *Populus*, *Salix*, *Scopolia*, *Trimeria*, *Xylosma*, **Simaroubaceae:** *Brucea*, *Picrasma*, **Verbenaceae:** *Callicarpa*, *Caryopteris*, *Clerodendrum*, *Gmelina*, *Holmskioldia*, *Premna*, *Tectona*, *Teucrium*, *Vitex*, **Violaceae:** *Hybanthus*, *Melicytus*, *Viola*.

Table S14. Plant genera with high priority for future screening for conditions related to neurological problems

These genera were included in the hot nodes of at least two of the study regions (Nepal, New Zealand, and the Cape of South Africa) for this category of conditions.

Achariaceae: *Acharia*, *Ceratosicyos*, **Amaranthaceae:** *Psilotrichum*, **Anacardiaceae:** *Anacardium*, *Buchanania*, *Cotinus*, *Dobinea*, *Heeria*, *Laurophyllum*, *Man-gifera*, *Pistacia*, *Rhus*, *Semecarpus*, *Spondias*, **Apocynaceae:** *Asclepias*, *Aspidoglossum*, *Gomphocarpus*, *Telosma*, *Xysmalobium*, **Asteraceae:** *Marasmodes*, *Myriactis*, **Begoniaceae:** *Begonia*, **Betulaceae:** *Alnus*, *Betula*, *Carpinus*, *Corylus*, **Brassicaceae:** *Alliaria*, *Arabidopsis*, *Arabis*, *Barbarea*, *Brassica*, *Braya*, *Cadaba*, *Capparis*, *Capsella*, *Cardamine*, *Chamira*, *Christolea*, *Cleome*, *Crateva*, *Descurainia*, *Desideria*, *Dilophia*, *Diplotaxis*, *Dontostemon*, *Draba*, *Erysimum*, *Eutrema*, *Hedinia*, *Heliophila*, *Iberis*, *Lepidium*, *Lignariella*, *Maerua*, *Megacarpaea*, *Microsymbrium*, *Nasturtium*, *Notothlaspi*, *Pachycladon*, *Pegaeophyton*, *Phaeo-nychium*, *Raphanus*, *Rorippa*, *Sisymbrium*, *Thlaspi*, *Torularia*, **Cannabaceae:** *Cannabis*, *Humulus*, **Caricaceae:** *Carica*, **Casuarinaceae:** *Casuarina*, **Celastraceae:** *Bhesa*, *Cassine*, *Celastrus*, *Elaeodendron*, *Euonymus*, *Gloveria*, *Gymnosporia*, *Lauridia*, *Lophopetalum*, *Maurocenia*, *Maytenus*, *Mystroxydon*, *Putterlickia*, *Re-issantia*, *Robsonodendron*, *Stackhousia*, **Clusiaceae:** *Garcinia*, *Hypericum*, *Mesua*, **Combretaceae:** *Anogeissus*, *Combretum*, *Quisqualis*, *Terminalia*, **Coriariaceae:** *Coriaria*, **Corynocarpaceae:** *Corynocarpus*, **Crassulaceae:** *Adromischus*, *Cotyledon*, *Crassula*, *Kalanchoe*, *Sedum*, **Cucurbitaceae:** *Benincasa*, *Biswarea*, *Bryonia*, *Citrullus*, *Coccinia*, *Cucumis*, *Cucurbita*, *Cyclanthera*, *Diplocyclos*, *Edgaria*, *Gomphogyne*, *Gymnocopelium*, *Gynostemma*, *Herpetospermum*, *Kedrostis*, *Lagenaria*, *Luffa*, *Momordica*, *Mukia*, *Neoalsomitra*, *Sechium*, *Sicyos*, *Solena*, *Thladiantha*, *Trichosanthes*, *Zehneria*, **Cunoniaceae:** *Ackama*, *Cunonia*, *Platylophus*, *Wein-mannia*, **Daphniphyllaceae:** *Daphniphyllum*, **Datisicaceae:** *Datisca*, *Tetrameles*, **Dipterocarpaceae:** *Shorea*, **Elaeagnaceae:** *Elaeagnus*, *Hippophae*, **Elaeocarpaceae:** *Aristolelia*, *Elaeocarpus*, *Sloanea*, **Elatinaceae:** *Bergia*, *Elatine*, **Escalloniaceae:** *Ixerba*, **Euphorbiaceae:** *Acalypha*, *Adenocline*, *Alchornea*, *Aleurites*, *Andrachne*, *Antidesma*, *Baccaurea*, *Baliospermum*, *Bischofia*, *Breynia*, *Chrozophora*, *Cleidion*, *Clusia*, *Croton*, *Dalechampia*, *Euphorbia*, *Eurotia*, *Flueggea*, *Glochidion*, *Homalanthus*, *Hyaenanthe*, *Jatropha*, *Lachnostylis*, *Leidesia*, *Macaranga*, *Mallotus*, *Mercurialis*, *Ostodes*, *Phyllanthus*, *Poranthera*, *Pu-tranjiva*, *Ricinus*, *Sapium*, *Sauropus*, *Securinega*, *Seidelia*, *Tragia*, *Trewia*, **Fabaceae:** *Abrus*, *Acacia*, *Acrocarpus*, *Aeschynomene*, *Albizia*, *Alysicarpus*, *Amphicar-paea*, *Amphithalea*, *Apios*, *Arachis*, *Argyrobolium*, *Aspalathus*, *Astragalus*, *Atylosia*, *Bauhinia*, *Bolusafra*, *Butea*, *Caesalpinia*, *Cajanus*, *Calpurnia*, *Campylotropis*, *Canavalia*, *Caragana*, *Carmichaelia*, *Cassia*, *Chamaecrista*, *Chesneya*, *Cicer*, *Clianthus*, *Clitoria*, *Cochlianthus*, *Codariocalyx*, *Colutea*, *Crotalaria*, *Cyclopsia*, *Cytisus*, *Dalbergia*, *Delonix*, *Derris*, *Desmodium*, *Dipogon*, *Dolichos*, *Dumasia*, *Dunbaria*, *Entada*, *Eriosema*, *Erythrina*, *Flemingia*, *Galactia*, *Geissaspis*, *Genista*, *Glycine*, *Glycyrrhiza*, *Gueldenstaedtia*, *Hedysarum*, *Hypocalyptus*, *Indigofera*, *Kennedia*, *Lablab*, *Lathyrus*, *Lebeckia*, *Lens*, *Lespedeza*, *Lessertia*, *Leucaena*, *Liparia*, *Lotononis*, *Lotus*, *Lupinus*, *Macrotyloma*, *Medicago*, *Melilotus*, *Melolobium*, *Millettia*, *Mimosa*, *Montigena*, *Mucuna*, *Ormosia*, *Otholobium*, *Oxytropis*, *Paracalyx*, *Paraserianthes*, *Parochetus*, *Phaseolus*, *Piptanthus*, *Pisum*, *Pithecellobium*, *Podalyria*, *Polhillia*, *Pongamia*, *Pterocarpus*, *Pueraria*, *Rafnia*, *Rhynchosia*, *Robinia*, *Saraca*, *Schotia*, *Senna*, *Sesbania*, *Shuteria*, *Smithia*, *Sophora*, *Spatholobus*, *Stirtonanthus*, *Tadehagi*, *Tamarindus*, *Tephrosia*, *Thermopsis*, *Trifolium*, *Trigonella*, *Urania*, *Vicia*, *Vigna*, *Virgilia*, *Wiborgia*, *Wisteria*, *Xiphotheca*, *Zornia*, **Fagaceae:** *Castanopsis*, *Lithocarpus*, *Nothofagus*, *Quercus*, **Geissolomataceae:** *Geissoloma*, **Geraniaceae:** *Erodium*, *Geranium*, *Monsonia*, *Pelargonium*, **Grossulariaceae:** *Ribes*, **Haloragaceae:** *Gonocarpus*, *Haloragis*, **Hamamelidaceae:** *Ex-bucklandia*, *Trichoccephalus*, *Trichocladus*, **Juglandaceae:** *Engelhardia*, *Juglans*, **Lamiaceae:** *Ballota*, *Galeobdolon*, *Lamium*, *Leonurus*, *Leonurus*, *Leonurus*, *Lythrum*, **Lauraceae:** *Cryptocarya*, **Linaceae:** *Anisadenia*, *Linum*, *Reinwardtia*, **Loranthaceae:** *Dendrophthoe*, *Loranthus*, *Macrosolen*, *Moquiniella*, *Peraxilla*, *Scurrula*, *Septulina*, *Taxillus*, *Tupeia*, **Lythraceae:** *Ammannia*, *Cuphea*, *Duabanga*, *Lagerstroemia*, *Lawsonia*, *Lythrum*, *Punica*, *Rotala*, *Trapa*, *Woodfordia*, **Malpighiaceae:** *Aspidopterys*, *Hiptage*, **Malvaceae:** *Abroma*, *Abutilon*, *Adansonia*, *Alcea*, *Anisodonteia*, *Bombax*, *Byttneria*, *Corchorus*, *Entelea*, *Eriolaena*, *Firmiana*, *Gossypium*, *Grewia*, *Helicteres*, *Hermannia*, *Hibiscus*, *Hoheria*, *Kydia*, *Lavatera*, *Malva*, *Malvaviscus*, *Melochia*, *Pavonia*, *Plagianthus*, *Pterospermum*, *Sida*, *Sparrmannia*, *Sterculia*, *Thespesia*, *Triumfetta*, *Urena*, **Melastomataceae:** *Medinilla*, *Melastoma*, *Osbeckia*, **Meliaceae:** *Aglaiia*, *Azadirachta*, *Chukrasia*, *Cipadessa*, *Dysoxylum*, *Ekebergia*, *Melia*, *Munronia*, *Nymania*, *Toona*, *Trichilia*, **Meliantaceae:** *Melianthus*, **Moraceae:** *Artocarpus*, *Ficus*, *Maclura*, *Morus*, *Strelbitis*, **Moringaceae:** *Moringa*, **Myricaceae:** *Morella*, *Callistemon*, *Eucalyptus*, *Eugenia*, *Kunzea*, *Leptospermum*, *Lophomyrtus*, *Metrosideros*, *Neomyrtus*, *Psidium*, *Syzygium*, **Neuradaceae:** *Griellum*, **Ochnaceae:** *Ochna*, **Olacaceae:** *Erythralpalum*, *Olax*, **Schoepfiaceae:** *Olinia*, **Onagraceae:** *Chamerion*, *Circaea*, *Epilobium*, *Ludwigia*, *Oenothera*, **Opiliaceae:** *Cansjera*, *Lepionurus*, **Oxalidaceae:** *Biophytum*, *Oxalis*, **Paoniaceae:** *Paeonia*, **Parnassiaceae:** *Parnassia*, **Passifloraceae:** *Passiflora*, **Penaeaceae:** *Brachysiphon*, *Endonema*, *Glischrocolla*, *Penaea*, *Saltera*, *Sonderothamnus*, *Stylapteris*, **Phyllanthaceae:** *Aporosa*, **Poaceae:** *Australopyrum*, **Podostemaceae:** *Hydrobryum*, **Polygalaceae:** *Muraltia*, *Polygala*, *Securidaca*, **Resedaceae:** *Oligomeris*, **Rhamnaceae:** *Berchemia*, *Discaria*, *Gouania*, *Helinus*, *Hovenia*, *Noltea*, *Paliurus*, *Phyllica*, *Pomaderris*, *Rhamnella*, *Rhamnus*, *Sageretia*, *Scutia*, *Ventilago*, *Ziziphus*, **Rhizophoraceae:** *Carallia*, **Rosaceae:** *Acaena*, *Agrimonia*, *Alchemilla*, *Arunculus*, *Cliffortia*, *Cotoneaster*, *Crataegus*, *Docynia*, *Eriobotrya*, *Filipendula*, *Fragaria*, *Geum*, *Malus*, *Neillia*, *Photinia*, *Potentilla*, *Prinsepia*, *Prunus*, *Pygeum*, *Pyracantha*, *Rosa*, *Rubus*, *Sanguisorba*, *Sibbaldia*, *Sorbaria*, *Sorbus*, *Spiraea*, **Rutaceae:** *Acmadenia*, *Adenandra*, *Aegle*, *Agathosma*, *Calodendrum*, *Citrus*, *Clausena*, *Coleonema*, *Diosma*, *Empleuridium*, *Empleurum*, *Euchaetis*, *Euodia*, *Glycosmis*, *Macrotylis*, *Melicope*, *Micromelum*, *Murraya*, *Ptaeroxylon*, *Ruta*, *Skimmia*, *Toddalia*, *Zanthoxylum*, **Salicaceae:** *Casearia*, *Dovyalis*, *Flacourtia*, *Gynocardia*, *Homalium*, *Kiggelaria*, *Populus*, *Salix*, *Scopelia*, *Trimeria*, *Xylosma*, **Salvadoraceae:** *Azima*, **Santalaceae:** *Arceuthobium*, *Dufrenoyia*, *Exocarpus*, *Gynocardia*, *Korthalsella*, *Mida*, *Osyris*, *Pyrularia*, *Rhoiacarpos*, *Santalum*, *Thesidium*, *Thesium*, *Viscum*, **Sapindaceae:** *Acer*, *Aesculus*, *Alectryon*, *Allophylus*, *Atalaya*, *Cardiospermum*, *Dodonaea*, *Erioglossum*, *Lepisanthes*, *Litchi*, *Pap-pea*, *Sapindus*, *Schleichera*, *Smelophyllum*, **Saxifragaceae:** *Astilbe*, *Bergenia*, *Chrysosplenium*, *Rodgersia*, *Saxifraga*, *Tiarella*, **Simaroubaceae:** *Brucea*, *Picrasma*, **Stachyuraceae:** *Stachyurus*, **Staphyleaceae:** *Staphylea*, *Turpinia*, **Tamaricaceae:** *Myricaria*, **Thymelaeaceae:** *Aquilaria*, *Daphne*, *Drapetes*, *Edgeworthia*, *Gnidia*, *Lachnaea*, *Passerina*, *Pimelea*, *Stellera*, *Struthiola*, *Wikstroemia*, **Tropaeolaceae:** *Tropaeolum*, **Ulmaceae:** *Celtis*, *Chaetachme*, *Holoptelea*, *Trema*, *Ulmus*, **Urti-caceae:** *Boehmeria*, *Chamabainia*, *Dendrocide*, *Didymodoxa*, *Droguetia*, *Elatostema*, *Forsskaolea*, *Girardinia*, *Gonostegia*, *Laporteia*, *Lecanthus*, *Parietaria*, *Pilea*, *Poikilospermum*, *Procris*, *Urtica*, **Violaceae:** *Hybanthus*, *Melicytus*, *Viola*, **Vitaceae:** *Ampelocissus*, *Ampelopsis*, *Cayratia*, *Cissus*, *Cyphostemma*, *Leea*, *Parthenocissus*, *Rhoicissus*, *Tetragium*, *Vitis*, **Zygophyllaceae:** *Augea*, *Seetzenia*, *Tribulus*, *Zygophyllum*.

Table S15. Plant genera with high priority for future screening for conditions related to ophthalmological problems

These genera were included in the hot nodes of at least two of the study regions (Nepal, New Zealand, and the Cape of South Africa) for this category of conditions.

Berberidaceae: *Berberis*, *Mahonia*, *Podophyllum*, **Boraginaceae:** *Myosotis*, **Circaeasteraceae:** *Circaeaster*, **Coriariaceae:** *Coriaria*, **Corynocarpaceae:** *Coryno-carpus*, **Elaeocarpaceae:** *Aristolelia*, *Elaeocarpus*, **Lardizabalaceae:** *Akebia*, *Decaisnea*, *Holboellia*, **Lauraceae:** *Cryptocarya*, **Malvaceae:** *Hoheria*, *Plagianthus*, **Menispermaceae:** *Antizoma*, *Cissampelos*, *Cocculus*, *Parabaena*, *Pericampylus*, *Stephania*, *Tiliacora*, *Tinospora*, **Myrtaceae:** *Kunzea*, *Leptospermum*, *Metrosi-deros*, **Papaveraceae:** *Argemone*, *Corydalis*, *Cysticapnos*, *Dicentra*, *Dicranostigma*, *Hypecoum*, *Meconopsis*, *Papaver*, *Trigonocapnos*, **Ranunculaceae:** *Aconitum*, *Actaea*, *Adonis*, *Anemone*, *Aquilegia*, *Callianthemum*, *Caltha*, *Cimicifuga*, *Clematis*, *Delphinium*, *Halerpestes*, *Isopyrum*, *Naravella*, *Nigella*, *Oxygraphis*, *Para-quicklegia*, *Ranunculus*, *Thalictrum*, *Trollius*, **Rosaceae:** *Geum*, *Rubus*, **Rubiaceae:** *Psychotria*, **Sapindaceae:** *Alectryon*, *Litchi*, *Pappea*.

Table S16. Plant genera with high priority for future screening for conditions related to otorhinolaryngological problems

These genera were included in the hot nodes of at least two of the study regions (Nepal, New Zealand, and the Cape of South Africa) for this category of conditions.

Anacardiaceae: *Anacardium*, *Buchanania*, *Cotinus*, *Dobinea*, *Heeria*, *Laurophyllum*, *Mangifera*, *Pistacia*, *Rhus*, *Semecarpus*, *Spondias*, **Apocynaceae:** *Telosma*, **Boraginaceae:** *Myosotis*, **Brassicaceae:** *Alliaria*, *Arabidopsis*, *Arabis*, *Barbarea*, *Brassica*, *Braya*, *Cadaba*, *Capparis*, *Capsella*, *Cardamine*, *Chamira*, *Christolea*, *Cleome*, *Crateva*, *Descurainia*, *Desideria*, *Dilophia*, *Diploaxis*, *Dontostemon*, *Draba*, *Erysimum*, *Hedinia*, *Heliophila*, *Iberis*, *Lepidium*, *Lignariella*, *Maerua*, *Megacarpaea*, *Microsymbrium*, *Nasturtium*, *Notothlaspi*, *Pachycladon*, *Pegaeophyton*, *Phaeonychium*, *Raphanus*, *Rorippa*, *Sisymbrium*, *Thlaspi*, *Torularia*, **Caricaceae:** *Carica*, **Dipterocarpaceae:** *Shorea*, **Escalloniaceae:** *Ixerba*, **Geissolomataceae:** *Geissoloma*, **Lamiaceae:** *Clinopodium*, *Mentha*, *Micromeria*, *Thymus*, **Malvaceae:** *Abroma*, *Abutilon*, *Adansonia*, *Alcea*, *Anisodonteia*, *Bombax*, *Byttneria*, *Corchorus*, *Entelea*, *Eriolaena*, *Gossypium*, *Grewia*, *Helicteres*, *Hermannia*, *Hibiscus*, *Hoheria*, *Kydia*, *Lavatera*, *Malva*, *Malvaviscus*, *Melochia*, *Pavonia*, *Plagianthus*, *Pterospermum*, *Sida*, *Sparmannia*, *Sterculia*, *Thespesia*, *Triumfetta*, *Urena*, **Melastomataceae:** *Medinilla*, *Melastoma*, *Osbeckia*, **Meliaceae:** *Aglaiia*, *Azadirachta*, *Chukrasia*, *Cipadessa*, *Dysoxylum*, *Ekebergia*, *Melia*, *Munronia*, *Nymania*, *Toona*, *Trichilia*, **Melanthaceae:** *Melianthus*, **Moringaceae:** *Moringa*, **Myrtaceae:** *Callistemon*, *Eucalyptus*, *Eugenia*, *Kunzea*, *Leptospermum*, *Lophomyrtus*, *Metrosideros*, *Neomyrtus*, *Psidium*, *Syzygium*, **Neuradaceae:** *Grielum*, **Oliniaceae:** *Olinia*, **Penaeaceae:** *Brachysiphon*, *Endonema*, *Glischrocolla*, *Penaea*, *Saltera*, *Sonderothamnus*, *Stylapterus*, **Ranunculaceae:** *Anemone*, *Callianthemum*, *Caltha*, *Clematis*, *Halerpestes*, *Naravelia*, *Nigella*, *Oxygraphis*, *Ranunculus*, **Resedaceae:** *Oligomeris*, **Rosaceae:** *Geum*, *Rubus*, **Rubiaceae:** *Psychotria*, **Rutaceae:** *Acmadenia*, *Adenandra*, *Aegle*, *Agathosma*, *Calodendrum*, *Citrus*, *Clausena*, *Coleonema*, *Diosma*, *Empleurum*, *Euchaetis*, *Euodia*, *Glycosmis*, *Macrostylis*, *Melicope*, *Micromelum*, *Murraya*, *Ptaeroxylon*, *Ruta*, *Skimmia*, *Toddalia*, *Zanthoxylum*, **Salvadoraceae:** *Azima*, **Sapindaceae:** *Acer*, *Aesculus*, *Alectryon*, *Allophylus*, *Atalaya*, *Cardiospermum*, *Dodonaea*, *Erioglossum*, *Lepisanthes*, *Litchi*, *Pappea*, *Sapindus*, *Schleichera*, *Smelophyllum*, **Simaroubaceae:** *Brucea*, *Picrasma*, **Stachyuraceae:** *Stachyurus*, **Staphyleaceae:** *Staphylea*, *Turpinia*, **Thymelaeaceae:** *Aquilaria*, *Daphne*, *Drapetes*, *Edgeworthia*, *Gnidia*, *Lachnaea*, *Passerina*, *Pimelea*, *Stellera*, *Struthiola*, *Wikstroemia*, **Tropaeolaceae:** *Tropaeolum*.

Table S17. Plant genera with high priority for future screening for conditions related to respiratory/pulmonary problems

These genera were included in the hot nodes of at least two of the study regions (Nepal, New Zealand, and the Cape of South Africa) for this category of conditions.

Euphorbiaceae: *Acalypha*, *Aleurites*, **Asteraceae:** *Anaphalis*, *Arctotheca*, *Arctotis*, *Berkheya*, *Blumeopsis*, *Caesulia*, *Carpesium*, *Cullumia*, *Cyathocline*, *Didelta*, *Elephantopus*, *Euchiton*, *Gamochaeta*, *Gazania*, *Gnaphalium*, *Heterolepis*, *Hoplophyllum*, *Inula*, *Laggera*, *Pentanema*, *Platycarpha*, *Pulicaria*, *Sphaeranthus*, *Vernonia*, **Euphorbiaceae:** *Baliospermum*, *Croton*, *Jatropha*, *Ostodes*, **Geraniaceae:** *Erodium*, *Geranium*, *Monsonia*, *Pelargonium*, **Lamiaceae:** *Ballota*, *Clinopodium*, *Galeobdolon*, *Lamium*, *Leonotis*, *Marrubium*, *Mentha*, *Micromeria*, *Origanum*, *Salvia*, *Thymus*, **Malvaceae:** *Firmiana*.

Table S18. Plant genera with high priority for future screening for conditions related to skin problems

These genera were included in the hot nodes of at least two of the study regions (Nepal, New Zealand, and the Cape of South Africa) for this category of conditions.

Acanthaceae: *Acanthus, Aechmanthera, Andrographis, Asystasia, Avicennia, Barleria, Chaetacanthus, Clarkeasia, Crossandra, Dicliptera, Ecbolium, Echinacanthus, Eranthemum, Hypoestes, Isoglossa, Justicia, Lepidagathis, Monechma, Nelsonia, Peristrophe, Petalidium, Phaulopsis, Pseudaechmanthera, Pseuderanthemum, Ruellia, Rungia, Strobilanthes, Thunbergia*, **Anacardiaceae:** *Anacardium, Buchanania, Cotinus, Dobinea, Heeria, Laurophyllum, Mangifera, Pistacia, Rhus, Semecarpus, Spondias*, **Apocynaceae:** *Acokanthera, Alstonia, Anisotoma, Araujia, Asclepias, Aspidoglossum, Astephanus, Beaumontia, Calotropis, Caralluma, Carissa, Catharanthus, Ceropegia, Chonemorpha, Cryptolepis, Cynanchum, Dregea, Eustegia, Fockea, Gomphocarpus, Gonioma, Gymnema, Hemidesmus, Heterostemma, Holarrhena, Holostemma, Hoya, Ichnocarpus, Leptadenia, Marsdenia, Microloma, Nerium, Oncinema, Orthanthera, Oxystelma, Pachypodium, Parsonsia, Pentasachme, Pergularia, Periploca, Plumeria, Quaqua, Raphistemma, Rauwolfia, Riocreuxia, Sarcostemma, Secamone, Stapelia, Tabernaemontana, Trachelospermum, Treutlera, Tylophora, Vallaris, Vinca, Vincetoxicum, Wrightia, Xysmalobium*, **Araliaceae:** *Merrillioanax*, **Asteraceae:** *Aster, Conyza, Felicia, Grangea, Vittadinia*, **Bigoniaceae:** *Campsis, Incarvillea, Jacaranda, Macfadyena, Oroxyllum, Pandorea, Pyrostegia, Rhigozum, Stereospermum, Tecoma, Tecomanthe, Tecomaria*, **Boraginaceae:** *Anchusa, Arnebia, Leonurus, Asperugo, Codon, Cordia, Cynoglossum, Echiochachys, Echium, Ehretia, Heliotropium, Hydrolea, Lappula, Lasiocaryum, Lindelofia, Lithospermum, Lobostemon, Myosotis, Onosma, Trichodesma, Trigonotis*, **Campanulaceae:** *Sphenoclea*, **Carlemanniaceae:** *Carlemannia*, **Convolvulaceae:** *Aniseia, Argyreia, Calystegia, Convolvulus, Dichondra, Evolvulus, Falkia, Ipomoea, Operculina, Porana*, **Coriariaceae:** *Coriaria*, **Corynocarpaceae:** *Corynocarpus*, **Cunoniaceae:** *Ackama, Cunonia, Platylophus, Weinmannia*, **Ebenaceae:** *Diospyros, Euclea*, **Elaeocarpaceae:** *Aristotelia, Elaeocarpus, Sloanea*, **Ericaceae:** *Monotropastrum*, **Escalloniaceae:** *Psoralea*, **Geissolomataceae:** *Geissoloma*, **Gentianaceae:** *Canscora, Centaurium, Chironia, Exacum, Gentiana, Gentianella, Halenia, Lomatogoniopsis, Orphium, Sebaea, Swertia*, **Geraniaceae:** *Erodium, Geranium, Monsonia, Pelargonium*, **Gesneriaceae:** *Aeschynanthus, Chirita, Didymocarpus, Platystemma, Rhabdothermus, Rhynchoglossum, Streptocarpus*, **Icacinaceae:** *Cassinopsis, Pyrenacantha*, **Lamiaceae:** *Ajuga, Anisochilus, Anisomeles, Ballota, Clinopodium, Colebrookea, Coleus, Craniotome, Dracocephalum, Elsholtzia, Galeobdolon, Galeopsis, Glechoma, Gomphostemma, Lamium, Leonotis, Leonurus, Leucas, Marrubium, Melissa, Mentha, Micromelia, Mosla, Nepeta, Ocimum, Origanum, Perilla, Phlomis, Plectranthus, Pogostemon, Prunella, Salvia, Scutellaria, Stachys, Teucrium, Thymus*, **Lauraceae:** *Cryptocarya*, **Lentibulariaceae:** *Pinguicula*, **Lentibulariaceae:** *Utricularia, Gardneria*, **Loganiaceae:** *Geniostoma, Logania, Mitrasacme, Mitreola, Strychnos*, **Malvaceae:** *Alcea, Anisodonte, Hoheria, Lavatera, Malva, Plagianthus, Sida*, **Melastomataceae:** *Medinilla, Melastoma, Osbeckia*, **Meliaceae:** *Aglaiia, Azadirachta, Chukrasia, Cipadessa, Dysoxylum, Ekebergia, Melia, Munronia, Nymania, Toona, Trichilia*, **Melanthaceae:** *Melanthus*, **Montiniaceae:** *Montinia*, **Myoporaceae:** *Myoporum*, **Myrtaceae:** *Callistemon, Eucalyptus, Eugenia, Kunzea, Leptospermum, Lophomyrtus, Metrosideros, Neomyrtus, Psidium, Syzygium*, **Oleaceae:** *Chionanthus, Fraxinus, Jasminum, Ligustrum, Menodora, Nestegis, Olea, Osmanthus, Syringa*, **Oliniaceae:** *Olinia*, **Oxalidaceae:** *Biophytum, Oxalis*, **Passifloraceae:** *Passiflora*, **Pedaliaceae:** *Martynia, Sesamum*, **Penaeaceae:** *Brachysiphon, Endonema, Glichrocolla, Penaea, Saltera, Sonderothamnus, Stylapterus*, **Phrymaceae:** *Glossostigma, Phryma*, **Plantaginaceae:** *Callitriche, Hippuris, Plantago*, **Poaceae:** *Pseudosasa*, **Ranunculaceae:** *Myosurus*, **Rubiaceae:** *Adina, Anthocephalus, Anthospermum, Argostemma, Burchellia, Canthium, Carpacoe, Chassalia, Coffea, Coprosma, Galium, Galopina, Gardenia, Hedyotis, Hydrophylax, Hymenodictyon, Ixora, Knoxia, Kohautia, Lasianthus, Leptodermis, Luculia, Meyna, Mitragyna, Morinda, Mussaenda, Mycetia, Neanotis, Nenax, Nertera, Oldenlandia, Ophiorrhiza, Paderia, Pavetta, Psydrax, Randia, Rothmannia, Rubia, Serissa, Spermadictyon, Uncaria, Wendlandia*, **Rutaceae:** *Acmadenia, Adenandra, Aegle, Agathosma, Calodendrum, Citrus, Clausena, Coleonema, Diosma, Empleurum, Euchaetis, Euodia, Glycosmis, Macrostylis, Melicope, Micromelum, Murraya, Ptaeroxylon, Ruta, Skimmia, Toddalia, Zanthoxylum*, **Salicaceae:** *Dovyalis, Populus, Salix, Trimeria*, **Sapindaceae:** *Acer, Aesculus, Alectryon, Allophylus, Atalaya, Cardiospermum, Dodonaea, Erioglossum, Lepisanthes, Litchi, Pappia, Sapindus, Schleicheria, Smelophyllum*, **Scrophulariaceae:** *Adenosma, Alectra, Alonsoa, Angelonia, Antirrhinum, Aptosimum, Bacopa, Bartsia, Buchnera, Buddleja, Calceolaria, Calorhabdos, Cromidon, Cycnium, Diascia, Diclis, Digitalis, Dischisma, Dopatrium, Ellisiophyllum, Euphrasia, Freylinia, Gomphostigma, Graderia, Gratiola, Halleria, Harveya, Hebe, Hebenstretia, Hemimeris, Hemiphragma, Hyobanche, Ixianthes, Jamesbrittenia, Jovellana, Kickxia, Lancea, Lindenbergia, Lindernia, Lyperia, Mazus, Melasma, Microdon, Mimulus, Nemesia, Nuxia, Oftia, Parahebe, Pedicularis, Peliostomum, Phyllopodium, Polycarena, Scrophularia, Selago, Sopubia, Striga, Sutera, Teedia, Torenia, Verbascum, Veronica, Zaluzianskya*, **Simaroubaceae:** *Brucea, Picrasma*, **Solanaceae:** *Atropa, Brugmansia, Brunfelsia, Capsicum, Cestrum, Datura, Lycianthes, Lycium, Lycopersicon, Mandragora, Nicandra, Nicotiana, Physalis, Solanum, Withania*, **Stilbaceae:** *Euthystachys, Kogelbergia, Retzia, Stilbe*, **Tetrachondraceae:** *Tetrachondra*, **Urticaceae:** *Maoutia*, **Vahliaceae:** *Vahlia*, **Verbenaceae:** *Callicarpa, Caryopteris, Chascanum, Clerodendrum, Gmelina, Holmskioldia, Lantana, Nyctanthes, Premna, Tectona, Teucrium, Verbena, Vitex*, **Violaceae:** *Hybanthus, Melicytus, Viola*, **Zingiberaceae:** *Amomum*.

Table S19. Plant genera with high priority for future screening for conditions related to urinary problems

These genera were included in the hot nodes of at least two of the study regions (Nepal, New Zealand, and the Cape of South Africa) for this category of conditions.

Fabaceae: *Carmichaelia, Clianthus*, **Geraniaceae:** *Erodium, Geranium, Monsonia, Pelargonium*, **Meliaceae:** *Aglaiia, Azadirachta, Chukrasia, Cipadessa, Dysoxylum, Ekebergia, Melia, Munronia, Nymania, Toona, Trichilia*, **Myrtaceae:** *Kunzea, Leptospermum*, **Poaceae:** *Imperata, Miscanthus, Saccharum, Sorghum*, **Ranunculaceae:** *Clematis, Naravelia*, **Rosaceae:** *Acaena, Agrimonia, Alchemilla, Cliffortia, Filipendula, Fragaria, Geum, Potentilla, Rosa, Rubus, Sanguisorba, Sibbaldia*, **Rutaceae:** *Acmadenia, Adenandra, Aegle, Agathosma, Calodendrum, Citrus, Clausena, Coleonema, Diosma, Empleurum, Euchaetis, Euodia, Glycosmis, Macrostylis, Melicope, Micromelum, Murraya, Ptaeroxylon, Ruta, Skimmia, Toddalia, Zanthoxylum*, **Simaroubaceae:** *Brucea, Picrasma*, **Violaceae:** *Hybanthus, Melicytus*.

Table S20. Plant genera with high priority for future screening for conditions related to other problems

These genera were included in the hot nodes of at least two of the study regions (Nepal, New Zealand, and the Cape of South Africa) for this category of conditions.

Achariaceae: *Acharia*, *Ceratosicyos*, **Amaranthaceae:** *Psilotrichum*, **Anacardiaceae:** *Anacardium*, *Buchanania*, *Cotinus*, *Dobinea*, *Heeria*, *Laurophyllum*, *Mangifera*, *Pistacia*, *Rhus*, *Semecarpus*, *Spondias*, **Apocynaceae:** *Araujia*, *Asclepias*, *Aspidoglossum*, *Astephanus*, *Calotropis*, *Cynanchum*, *Gomphocarpus*, *Holostemma*, *Microloma*, *Oncinema*, *Oxystelma*, *Pergularia*, *Raphistemma*, *Sarcostemma*, *Telosma*, *Tylophora*, *Vincetoxicum*, *Xysmalobium*, **Asteraceae:** *Marasmodes*, *Myriactis*, **Begoniaceae:** *Begonia*, **Betulaceae:** *Alnus*, *Betula*, *Carpinus*, *Corylus*, **Brassicaceae:** *Alliaria*, *Arabidopsis*, *Arabis*, *Barbarea*, *Brassica*, *Braya*, *Cadaba*, *Capparis*, *Capsella*, *Cardamine*, *Chamira*, *Christolea*, *Cleome*, *Crateva*, *Descurainia*, *Desideria*, *Dilophia*, *Diploaxis*, *Dontostemon*, *Draba*, *Erysimum*, *Eutrema*, *Hedinia*, *Heliophila*, *Iberis*, *Lepidium*, *Lignariella*, *Maerua*, *Megacarpaea*, *Microsymbrium*, *Nasturtium*, *Notothlaspi*, *Pachycladon*, *Pegaeophyton*, *Phaeonnychium*, *Raphanus*, *Rorippa*, *Sisymbrium*, *Thlaspi*, *Torularia*, **Cannabaceae:** *Cannabis*, *Humulus*, **Caricaceae:** *Carica*, **Casuarinaceae:** *Casuarina*, **Celastraceae:** *Bhesa*, *Cassine*, *Celastrus*, *Elaeodendron*, *Euonymus*, *Gloveria*, *Gymnosporia*, *Lauridia*, *Lophopetalum*, *Maurocena*, *Maytenus*, *Mystroxydon*, *Putterlickia*, *Reissantia*, *Robsonodendron*, *Stackhousia*, **Clusiaceae:** *Garcinia*, *Hypericum*, *Mesua*, **Combretaceae:** *Anogeissus*, *Combretum*, *Quisqualis*, *Terminalia*, **Coriariaceae:** *Coriaria*, **Corynocarpaceae:** *Corynocarpus*, **Cucurbitaceae:** *Benincasa*, *Biswarea*, *Bryonia*, *Citrullus*, *Coccinia*, *Cucumis*, *Cucurbita*, *Cyclanthera*, *Diplocyclos*, *Edgaria*, *Gomphogyne*, *Gymnopetalum*, *Gynostemma*, *Herpetospermum*, *Kedrostis*, *Lagenaria*, *Luffa*, *Momordica*, *Mukia*, *Neoalsomitra*, *Sechium*, *Sicyos*, *Solena*, *Thladiantha*, *Trichosanthes*, *Zehneria*, **Cunoniaceae:** *Ackama*, *Cunonia*, *Platylophus*, **Cunoniaceae:** *Weinmannia*, **Datisacaceae:** *Datisca*, *Tetrameles*, **Dipterocarpaceae:** *Shorea*, **Elaeagnaceae:** *Elaeagnus*, *Hippophae*, **Elaeocarpaceae:** *Aristotelia*, *Elaeocarpus*, *Sloanea*, **Elatinaceae:** *Bergia*, *Elatine*, **Escalloniaceae:** *Ixerba*, **Euphorbiaceae:** *Acalypha*, *Adenocline*, *Alchornea*, *Aleurites*, *Andrachne*, *Antidesma*, *Baccaurea*, *Baliospermum*, *Bischofia*, *Breynia*, *Bridelia*, *Chrozophora*, *Cleidion*, *Clutia*, *Croton*, *Dalechampia*, *Euphorbia*, *Excoecaria*, *Flueggea*, *Glochidion*, *Homalanthus*, *Hyaenanche*, *Jatropha*, *Lachnostylis*, *Leidesia*, *Macaranga*, *Mallotus*, *Mercurialis*, *Ostodes*, *Phyllanthus*, *Poranthera*, *Putranjiva*, *Ricinus*, *Sapium*, *Sauropus*, *Securinega*, *Seidelia*, *Tragia*, *Trevisia*, **Fabaceae:** *Abrus*, *Acacia*, *Acrocarpus*, *Aeschynomene*, *Albizia*, *Alysicarpus*, *Amphicarpaea*, *Amphithalea*, *Apios*, *Arachis*, *Argyrolobium*, *Aspalathus*, *Astragalus*, *Atylosia*, *Bauhinia*, *Bolusafra*, *Butea*, *Caesalpinia*, *Cajanus*, *Calpurnia*, *Campylotropis*, *Canavalia*, *Caragana*, *Carmichaelia*, *Cassia*, *Chamaecrista*, *Chesneya*, *Cicer*, *Clianthus*, *Clitoria*, *Cochlianthus*, *Codariocalyx*, *Colutea*, *Crotalaria*, *Cyclopia*, *Cytisus*, *Dalbergia*, *Delonix*, *Derris*, *Desmodium*, *Dipogon*, *Dolichos*, *Dumasia*, *Dunbaria*, *Entada*, *Eriosema*, *Erythrina*, *Flemingia*, *Galactia*, *Geissaspis*, *Genista*, *Glycine*, *Glycyrrhiza*, *Gueldenstaedtia*, *Hedysarum*, *Hypocalyptus*, *Indigofera*, *Kennedia*, *Lablab*, *Lathyrus*, *Lebeckia*, *Lens*, *Lespedeza*, *Lessertia*, *Leucaena*, *Liparia*, *Lotononis*, *Lotus*, *Lupinus*, *Macrotyloma*, *Medicago*, *Melilotus*, *Melolobium*, *Milletia*, *Mimosa*, *Montigena*, *Mucuna*, *Ormosia*, *Otholobium*, *Oxytropis*, *Paracalyx*, *Paraserianthes*, *Parochetus*, *Phaseolus*, *Piptanthus*, *Pisum*, *Pithecellobium*, *Podalyria*, *Polhillia*, *Pongamia*, *Pterocarpus*, *Pueraria*, *Rafnia*, *Rhynchosia*, *Robinia*, *Saraca*, *Schotia*, *Senna*, *Sesbania*, *Shuteria*, *Smithia*, *Sophora*, *Spatholobus*, *Stirtonanthus*, *Tadehagi*, *Tamarindus*, *Tephrosia*, *Thermopsis*, *Trifolium*, *Trigonella*, *Urania*, *Vicia*, *Vigna*, *Virgilia*, *Wiborgia*, *Wisteria*, *Xiphotheca*, *Zornia*, **Fagaceae:** *Castanopsis*, *Lithocarpus*, *Nothofagus*, *Quercus*, **Geissolomataceae:** *Geissoloma*, **Geraniaceae:** *Erodium*, *Geranium*, *Monsonia*, *Pelargonium*, **Juglandaceae:** *Engelhardtia*, *Juglans*, **Lauraceae:** *Cryptocarya*, **Linaceae:** *Anisadenia*, *Linum*, *Reinwardtia*, **Lythraceae:** *Ammannia*, *Cuphea*, *Duabanga*, *Lagerstroemia*, *Lawsonia*, *Lythrum*, *Punica*, *Rotala*, *Trapa*, *Woodfordia*, **Malpighiaceae:** *Aspidopterys*, *Hiptage*, **Malvaceae:** *Abroma*, *Abutilon*, *Adansonia*, *Alcea*, *Anisodonta*, *Bombax*, *Byttneria*, *Corchorus*, *Entelea*, *Eriolaena*, *Firmiana*, *Gossypium*, *Grewia*, *Helicteres*, *Hermannia*, *Hibiscus*, *Hoheria*, *Kydia*, *Lavatera*, *Malva*, *Malvaviscus*, *Melochia*, *Pavonia*, *Plagianthus*, *Pterospermum*, *Sida*, *Sparrmannia*, *Sterculia*, *Thespesia*, *Triumfetta*, *Urena*, **Melastomataceae:** *Medinilla*, *Melastoma*, *Osbeckia*, **Meliaceae:** *Aglaiia*, *Azadirachta*, *Chukrasia*, *Cipadessa*, *Dysoxylum*, *Ekebergia*, *Melia*, *Munronia*, *Nymania*, *Toona*, *Trichilia*, **Melanthaceae:** *Melanthus*, **Moraceae:** *Artocarpus*, *Ficus*, *Maclura*, *Morus*, *Streblus*, **Moringaceae:** *Moringa*, **Myricaceae:** *Morella*, **Myrtaceae:** *Callistemon*, *Eucalyptus*, *Eugenia*, *Kunzea*, *Leptospermum*, *Lophomyrtus*, *Metrosideros*, *Neomyrtus*, *Psidium*, *Syzygium*, **Neuradaceae:** *Grielum*, **Ochnaceae:** *Ochna*, **Oliniaceae:** *Olinia*, **Onagraceae:** *Chamerion*, *Circaea*, *Epilobium*, *Ludwigia*, *Oenothera*, **Oxalidaceae:** *Biophytum*, *Oxalis*, **Parnassiaceae:** *Parnassia*, **Passifloraceae:** *Passiflora*, **Penaeaceae:** *Brachysiphon*, *Endonema*, *Glischrocolla*, *Penaea*, *Saltera*, *Sonderothamnus*, *Stylapteris*, **Phyllanthaceae:** *Aporosa*, **Poaceae:** *Australopyrum*, **Podostemaceae:** *Hydrobryum*, **Polygalaceae:** *Muraltia*, *Polygala*, **Securidacae:** *Oligomeris*, **Rhamnaceae:** *Berchemia*, *Discaria*, *Gouania*, *Helinus*, *Hovenia*, *Noltea*, *Paliurus*, *Phyllia*, *Pomaderris*, *Rhamnella*, *Rhamnus*, *Sageretia*, *Scutia*, *Trichocephalus*, *Ventilago*, *Ziziphus*, **Rhizophoraceae:** *Carallia*, **Rosaceae:** *Acaena*, *Agrimonia*, *Alchemilla*, *Arunco*, *Cliffortia*, *Cotoneaster*, *Crataegus*, *Docynia*, *Eriobotrya*, *Filipendula*, *Fragaria*, *Geum*, *Malus*, *Neillia*, *Photinia*, *Potentilla*, *Prinsepia*, *Prunus*, *Pygeum*, *Pyracantha*, *Rosa*, *Rubus*, *Sanguisorba*, *Sibbaldia*, *Sorbaria*, *Sorbus*, *Spiraea*, **Rutaceae:** *Acmadenia*, *Adenandra*, *Aegle*, *Agathosma*, *Calodendrum*, *Citrus*, *Clausea*, *Coleonema*, *Diosma*, *Empleuridium*, *Empleurum*, *Euchaetis*, *Euodia*, *Glycosmis*, *Macrostylis*, *Melicope*, *Micromelum*, *Murraya*, *Ptaeroxylon*, *Ruta*, *Skimmia*, *Toddalia*, *Zanthoxylum*, **Salicaceae:** *Casearia*, *Dovyalis*, *Flacourtia*, *Gynocardia*, *Homalium*, *Kiggelaria*, *Populus*, *Salix*, *Scolopia*, *Trimeria*, *Xylosma*, **Salvadoraceae:** *Azima*, **Sapindaceae:** *Acer*, *Aesculus*, *Alectryon*, *Allophylus*, *Atalaya*, *Cardiospermum*, *Dodonaea*, *Erioglossum*, *Lepisanthes*, *Litchi*, *Pappea*, *Sapindus*, *Schleichera*, *Smelophyllum*, **Simaroubaceae:** *Brucea*, *Picrasma*, **Stachyuraceae:** *Stachyurus*, **Staphyleaceae:** *Staphylea*, *Turpinia*, **Thymelaeaceae:** *Aquilaria*, *Daphne*, *Drapetes*, *Edgeworthia*, *Gnidia*, *Lachnaea*, *Passerina*, *Pimelea*, *Stellera*, *Struthiola*, *Wikstroemia*, **Tropaeolaceae:** *Tropaeolum*, **Ulmaceae:** *Celtis*, *Chaetachme*, *Holoptelea*, *Trema*, *Ulmus*, **Urticaceae:** *Boehmeria*, *Chamabainia*, *Dendrocnide*, *Didymodoxa*, *Droguetia*, *Elatostema*, *Forsskaolia*, *Girardinia*, *Gonostegia*, *Laportea*, *Lecanthus*, *Parietaria*, *Pilea*, *Poikilospermum*, *Procris*, *Urtica*, **Violaceae:** *Hybanthus*, *Meliccytus*, *Viola*, **Vitaceae:** *Ampelocissus*, *Ampelopsis*, *Cayratia*, *Cissus*, *Cyphostemma*, *Leea*, *Parthenocissus*, *Rhoicissus*, *Tetrastigma*, *Vitis*, **Zygophyllaceae:** *Augea*, *Seetzenia*, *Tribulus*, *Zygophyllum*.

Table S21. Taxa included in the phylogenetic analysis for genera of the flora of Nepal based on *rbcl* plastid sequences

GenBank accession numbers are given for each taxon.

Abelia triflora AF206727; *Abies homolepis* AB015648; *Abroma angusta* AJ012208; *Abrus precatorius* Z70167; *Abutilon* sp. AM235023; *Acacia karroo* AM235003; *Acalypha insulana* AB233854; *Acampe papillosa* JQ933201; *Acanthocalyx albus* AF446943; *Acanthopanax trifoliolatus* U50239; *Acanthospermum hispidum* JQ933202; *Acer sterculiaceum* DQ978435; *Achillea millefolium* L13641; *Achyranthes aspera* AY270048; *Aconitum artemisiifolium* DQ099435; *Aconogonon molle* EF653764; *Acorus calamus* D28865; *Acrocarpus fraxinifolius* AY904371; *Acroglochin chenopodioides* AY270049; *Acronema tenerum* JQ933205; *Actaea laciniata* DQ099449; *Actinidia callosa* AJ549061; *Adansonia digitata* AY328180; *Adenocaulon himalaicum* JQ933206; *Adenosma indianum* JQ933207; *Adenostemma lavenia* JQ933208; *Adina rubella* AJ346965; *Adonis amurensis* AY954487; *Aechmanthera gossypina* JQ933209; *Aegle marmelos* AF066811; *Aerva javanica* AY270050; *Aeschynanthus micranthus* AF170222; *Aeschynomene indica* AF308701; *Aesculus pavia* U39277; *Agapanthus africanus* AY465699; *Agapetes buxifolia* AF419811; *Agave ghiesbreghtii* AF206729; *Ageratum conyzoides* JQ933210; *Aglaiia elaeagnoidea* AY128209; *Agrimonia parviflora* U06791; *Agrostis stolonifera* AJ746280; *Agrostophyllum glumaceum* AY368351; *Ainsliaea acerifolia* AY874432; *Ajuga reptans* Z37385; *Alangium chinense* L11209; *Albizia julibrissin* Z70147; *Alcea rosea* JQ933211; *Alchemilla mollis* U06792; *Alchornea cordifolia* AY794959; *Aletris spicata* AB088834; *Aleurites moluccana* AY794883; *Alisma plantago-aquatica* L08759; *Alliaria petiolata* JQ933212; *Allium cepa* D38294; *Alnus sinuata* AY263926; *Almosia odora* JQ933213; *Aloe vera* AY323649; *Alopecurus geniculatus* AJ746281; *Alpinia purpurata* AY298816; *Alstonia scholaris* X91760; *Alternanthera caracasana* AY270053; *Alysicarpus vaginalis* JQ933214; *Amaranthus tricolor* X53980; *Amischotolype monosperma* AF312239; *Ammannia baccifera* AY036145; *Amomum tsaoko* FJ972788; *Amorphophallus paeoniifolius* AF497091; *Ampelocissus thyriflora* AJ402919; *Ampelopsis megalophylla* AJ402920; *Amphicarpeae bracteata* AF181930; *Anacardium occidentale* AY462008; *Anagallis arvensis* M88343; *Ananas comosus* L19977; *Anaphalis triplinervis* JQ933215; *Anchusa officinalis* JQ933216; *Andrographis paniculata* JQ933217; *Andropogon gerardii* AJ784818; *Androsace erecta* AF395004; *Anemone tenuifolia* AM235090; *Anethum graveolens* EU016783; *Angelica lucida* U50221; *Angelonia pubescens* AF123672; *Anisadenia pubescens* FJ169557; *Aniseia martinicensis* AY100998; *Anisochilus pallidus* JQ933218; *Anisomeles indica* FJ513149; *Annona muricata* L12629; *Anogeissus leiocarpa* AF425709; *Anthocephalus chinensis* JQ933220; *Anthogonium gracile* AF264153; *Anthoxanthum odoratum* AJ746282; *Anthriscus aemula* D44554; *Antidesma bunius* AY663566; *Antirrhinum majus* L1688; *Aphyllorchis caudata* FJ454873; *Apios taiwaniana* AB045787; *Apium graveolens* L01885; *Apluda mutica* JQ933221; *Aporosa frutescens* Z75674; *Apostasia stylioides* Z73705; *Aquilaria beccariana* Y15149; *Aquilegia brevistyla* DQ099444; *Arabidopsis thaliana* NC_000932; *Arabis glabra* DQ310542; *Arachis hypogaea* U74247; *Arachnis longispala* JQ933223; *Aralia spinosa* L11166; *Araucaria bidwillii* U96472; *Arceuthobium verticilliflorum* L26067; *Arctium lappa* JQ933225; *Ardisia crenata* L12598; *Areca triandra* AJ404819; *Arenaria drummondii* M83541; *Argemone mexicana* U86621; *Argostemma hookeri* Z68788; *Argyrea nervosa* AY100977; *Argyrobolium uniflorum* Z95548; *Ariopsis peltata* L10255; *Arisaema tortuosum* AF497109; *Aristida adscensionis* AM849349; *Aristolochia gigantea* AY572260; *Arnebia benthamii* JQ933226; *Artemisia afra* AM234849; *Arthraxon* sp. AJ746253; *Artocarpus altilis* AF500345; *Arunca dioicus* U06794; *Arundina graminifolia* AF074111; *Arundinaria tecta* AJ746179; *Arundinella deppeana* AM849417; *Arundo donax* U13226; *Asarum yakusimense* AB205609; *Asclepias curassavica* X91774; *Ascocentrum ampullaceum* JQ933227; *Asparagus officinalis* L05028; *Asperugo procumbens* JQ933228; *Aspidopterys elliptica* AF344459; *Aster bakeranus* AM234851; *Astilbe taquetii* L11173; *Astragalus sparsus* Z95550; *Asyneuma virgatum* AY655146; *Asystasia travancorica* JQ933229; *Athamanta sicula* JQ933230; *Atropa belladonna* U08609; *Atylosia lineata* AF181931; *Avena fatua* AJ746257; *Axonopus compressus* EF125127; *Axyris prostrata* AY270062; *Azadirachta indica* AY128215; *Baccaurea javanica* AY663570; *Bacopa repens* EF467905; *Baliospermum montanum* AY794884; *Bambusa valida* AJ746171; *Barbarea verna* AP009370; *Barleria prionitis* L01886; *Barringtonia asiatica* Z80174; *Basella alba* M62564; *Bauhinia purpurea* Z70162; *Beaumontia grandiflora* AJ002882; *Begonia isoptera* AF534723; *Beilschmiedia pendula* GQ981679; *Belamcanda chinensis* AJ307078; *Benincasa hispida* AY862549; *Berberis thunbergii* AF139878; *Berchemia discolor* AJ225786; *Bergenia cordifolia* U06208; *Bergia ammanioides* AJ402927; *Beta vulgaris* DQ067450; *Betula platyphylla* AY263927; *Bhesa robusta* AY935723; *Bidens pilosa* var. *minor* JQ933234; *Biophytum reinwardtii* JQ933235; *Bischofia javanica* AB233917; *Bistorta amplexicaule* AF297130; *Biswarea tonglensis* JQ933236; *Blainvillea acmella* JQ933237; *Blumeopsis flava* JQ933238; *Blysmus compressus* AJ404700; *Blyxa echinosperma* AB088810; *Boerhaavia nivea* AJ235801; *Boerhaavia elegans* FJ454873; *Bombax malabaricum* AY328181; *Borassus flabellifer* AY012469; *Borixa emeryi* EF125079; *Bosea yevamora* AY270069; *Bothriochloa ischemum* EF125115; *Bougainvillea glabra* M88340; *Boussingaultia cordifolia* JQ933240; *Brachiaria villosa* AM849375; *Brachyactis menthodora* JQ933241; *Brachycorythis* sp. AM235037; *Brachypodium sylvaticum* AJ746258; *Brachystemma calycinum* JQ933244; *Brassaiopsis hispida* JQ933245; *Brassica juncea* AY167979; *Braya purpurascens* JQ933246; *Breea arvensis* JQ933247; *Breynia cornua* AB233918; *Bridelia tomentosa* AY663574; *Briza media* AJ746285; *Bromus arenarius* AY691632; *Brucea mollis* JS98924; *Brunsmia styracoides* AF421086; *Brunfelsia americana* AY206720; *Buchanania latifolia* U39275; *Buchnera floridana* AF026822; *Buddleja asiatica* AJ001758; *Bulbophyllum lobbii* AF074115; *Bulbostylis hispidula* Y12944; *Bupleurum falcatum* U50224; *Burmanna longifolia* AF307484; *Butea minor* AB045789; *Buxus sempervirens* AF093717; *Byttneria pilosa* AB269890; *Caecalia graciflora* JQ933248; *Caesalpinia pulcherrima* Z70153; *Caesulia axillaris* JQ933249; *Cajanus cajan* Z95535; *Calamagrostis epigejos* AJ784820; *Calamus usitatus* M81810; *Calanthe tricarinata* AF264160; *Calceolaria* sp. AF123669; *Caldesia oligococca* AY277799; *Calendula officinalis* JQ933250; *Callianthemum taipaicum* FJ626580; *Callicarpa dichotoma* L14393; *Callistemon citrinus* AM235652; *Callitriche stagnalis* AF248023; *Calorhaddos brunoniana* JQ933251; *Calotropis procera* AJ419736; *Caltha palustris* AY395532; *Calystegia sepium* AY100992; *Camellia sinensis* AF380037; *Campanula latifolia* EF141027; *Campsis grandiflora* AF190429; *Campylandra aurantiaca* AB089635; *Campylotropis griffithii* U74228; *Canna glauca* AF378774; *Cannabis sativa* AJ402933; *Canscora diffusa* JQ933252; *Cansjera leptostachya* DQ790128; *Canthium inerme* AM235109; *Capillidium parviflorum* AM849398; *Capparis spinosa* AY167985; *Capsella bursa-pastoris* NC_009270; *Capsicum baccatum* U08610; *Caragana arborecens* Z70168; *Carallia brachiata* AB233928; *Caralluma indica* EU196258; *Cardamine flexuosa* D88905; *Cardiocrinum giganteum* AF275989; *Cardiospermum grandiflorum* AY724348; *Carduus edelbergii* JQ933253; *Carex nigra* AY395533; *Careya arborea* AF077655; *Carica papaya* M95671; *Carissa bispinosa* AJ419738; *Carlemania griffithii* AJ402937; *Carpesium nepalense* JQ933254; *Carpinus laxiflora* AB060585; *Carthamus tinctorius* L13862; *Carum verticillatum* JQ933255; *Caryopteris incana* U28869; *Caryota mitis* M81811; *Casearia sylvestris* AF206746; *Cassia senna* Z70155; *Cassine peragua* AM234952; *Cassiope mertensiana* L12603; *Castanopsis sieboldii* AB060564; *Casuarina equisetifolia* AY263930; *Cathanthus roseus* X91757; *Cayratia trifolia* AJ419727; *Cedrus deodara* X63662; *Celastrus orbiculatus* AY788194; *Celosia argentea* AY270072; *Celtis philippensis* AY263941; *Centaurea iberica* JQ933258; *Centaurium erythraea* FJ395560; *Centella asiatica* D44559; *Centipeda minima* JQ933259; *Centothea lappacea* AM887875; *Cephalanthera damasonium* AF074123; *Cerastium glomeratum* M83542; *Ceratostigma minus* Z97641; *Ceratostylis rubra* AY368353; *Cereus fernambucensis* AY875240; *Ceropegia woodii* X91775; *Cestrum nocturnum* AY206721; *Chaerophyllum khorosanum* JQ933260; *Chamaebainia cuspidata* JQ933261; *Chamaesciadium acaule* JQ933262; *Chassalia parviflora* Z68790; *Chenopodium botrys* AY270080; *Chesneya nubigena* JQ933263; *Chionanthus virginicus* DQ673309; *Chirita liboensis* JQ933264; *Chloranthus erectus* AY236834; *Chloris gayana* AM849409; *Chlorophyllum orchidastrium* Z77257; *Chonemorpha fragrans* JQ933265; *Christolea crassifolia* JQ933266; *Chrozophora oblongifolia* AB233860; *Chrysosplenium ramosum* AB003273; *Chukrasia tabularis* AY128223; *Cicer arietinum* AF308707; *Cicerbita cyanea* JQ933267; *Cimicifuga simplex* AY954483; *Cinnadenia paniculata* JQ933268; *Cinnamomum camphora* L12641; *Cipadessa baccifera* U39083; *Circaea alpina* L10216; *Circaeastr agrestis* AF093720; *Cirsium arvense* AY395534; *Cissampelos pareira* AF197590; *Cissus quadrangularis* AJ419720; *Citrullus lanatus* DQ535745; *Citrus sinensis* NC_008334; *Cladium jamaicense* Y12988; *Clarkeasia parviflora* JQ933269; *Clausena excavata* AF066813; *Cleidion castaneifolium* AY794936; *Cleisostoma rolfeanum* AF074130; *Clematis ganpiniana* AY954491; *Cleome viridiflora* AY483268; *Clerodendrum fragrans* L11689; *Cleyera japonica* AF421090; *Clinopodium chinense* FJ513146; *Clintonia udensis* AB034750; *Clitoria ternata* U74237; *Coccinia grandis* DQ535792; *Cocculus trilobus* L12642; *Cochlidium gracilis* JQ933271; *Cocos nucifera* AY012507; *Codariocalyx motorius* JQ933272; *Codonopsis viridis* AY655148; *Coelogyne cristata* AF074133; *Coffea arabica* X81095; *Coix lacryma-jobi* AM887882; *Colebrookea oppositifolia* U78712; *Coleus luteus* JQ933273; *Colocasia esculenta* JQ933275; *Colutea* sp. JQ933276; *Combretum wallichii* AY036151; *Commelina benghalensis* L05033; *Convolvulus arvensis* AY100993; *Conyza scabrida* AM234861; *Corchorus neocaledonicus* AF523842; *Cordia* sp. JQ933277; *Coriandrum sativum* L11676; *Coriaria nepalensis* AY968522; *Cornus controversa* AF190433; *Cortiella cortioides* JQ933278; *Corydalis nobilis* AF093722; *Corylus avellana* AY263929; *Costus lateriflorus* AY298826; *Cotinus coggygria* AY510148; *Cotoneaster* sp. JQ933279; *Cousinia tenella* JQ933280; *Craniotomea furcata* JQ933281; *Crassocephalum crepidioides* JQ933283; *Cratogeomys odora* AY167986; *Cremanthodium oblongatum* JQ933284; *Cremastra appendiculata* EU391354; *Crepis tibetica* JQ933285; *Crinum asiaticum* JQ933286; *Crocus pulchellus* AJ309668; *Crossandra infundibuliformis* JQ933287; *Crotalaria pallida* Z70135; *Croton punctatus* EF405851; *Cryptocarya obovata* U06841; *Cryptolepis obtusa* JQ933288; *Cryptomeria japonica* AJ621937; *Cucubalus baccifera* JQ933289; *Cucumis sativus* DQ535747; *Cucurbita pepo* AF206756; *Cuminum cyminum* JQ933290; *Cuphea lanceolata* AY036137; *Cupressus sempervirens* L12571; *Curculigo capitulata* AY149362; *Curcuma cochinchinensis*

EF590516; *Cyananthus lobatus* L18795; *Cyanotis* sp. AM234966; *Cyathocline purpurea* JQ933291; *Cycas circinalis* AF531198; *Cyclanthera brachystachya* DQ535749; *Cymbidium eburneum* AY368356; *Cymbopogon citratus* AM887872; *Cynanchum acutum* JQ933292; *Cynodon dactylon* AM849393; *Cynoglossum* sp. JQ933293; *Cyperus longus* Y13015; *Cypripedium passerinum* AF074142; *Cyrtococcum patens* AM849331; *Dactylis glomerata* AY395535; *Dactyloctenium aegyptium* AM887877; *Dactylorhiza fuchsii* JQ933294; *Dahlia pinnata* JQ933295; *Dalbergia hupeana* U74236; *Danthonia spicata* U31102; *Daphne mezereum* AJ297233; *Daphniphyllum macropodum* AM183400; *Datisca cannabina* L21939; *Datura metel* EF590517; *Daucus carota* NC_008325; *Decaisnea fargesii* D85692; *Deeringia amarantoides* AY270085; *Delonix regia* Z70156; *Delphinium bonvalotii* FJ626583; *Dendranthema mutellina* JQ933296; *Dendrobium crystallinum* D58407; *Dendrocalamus brandisii* AJ746174; *Dendrocnide sinuata* FJ432246; *Dendrophthoe nilgherrensis* JQ933297; *Derris laxiflora* U74234; *Deschampsia cespitosa* AY691635; *Descurainia sophia* JQ933298; *Desideria linearis* JQ933299; *Desmodium podocarpum* U74257; *Desmos dasymaschala* JQ933300; *Deutzia rubens* AF323196; *Dianella ensifolia* M96960; *Dianthus caryophyllus* M77699; *Diapensia lapponica* L12612; *Dicentra eximia* L37917; *Dichanthium annulatum* JQ933301; *Dichroa febrifuga* AF323187; *Dichrocephala benthamii* JQ933302; *Dicliptera obanensis* JQ933303; *Dicranostigma franchetiana* U86624; *Didymocarpus albomarginata* AF170231; *Digitalis purpurea* X83720; *Digitaria ciliaris* AM849336; *Dillenia indica* L01903; *Dilophia salsa* JQ933304; *Dioscorea prazeri* AY904803; *Diospyros kaki* Z80185; *Dipcadi filifolium* AM902303; *Diphylax urceolata* JQ933305; *Diplarche multiflora* AF419821; *Diplocyclos palmatus* AY862552; *Diplotaxis tenuifolia* JQ933306; *Dipsacus sativus* L13864; *Disporum sessile* L17376; *Dobinea vulgaris* EU123470; *Docynia indica* JQ933307; *Dodecadenia grandiflora* JQ933308; *Dolichos decumbens* AM235006; *Dontostemon glandulosus* JQ933309; *Dopatrium junceum* EF467903; *Doronicum roylei* JQ933310; *Draba nemorosa* NC_009272; *Dracocephalum grandiflorum* Z37388; *Dregea abyssinica* JQ933311; *Drepanostachyum falcatum* AJ746265; *Drosera burmannii* L01908; *Drymaria diandra* JQ933312; *Duabanga grandiflora* AY905407; *Dubyaea hispida* JQ933313; *Dufrenoya sphaerocarpa* EF584592; *Dumasia villosa* AF181933; *Dunbaria fusca* JQ933314; *Dysoxylum gaudichaudianum* AY128227; *Ecbolium amplexicaule* JQ933315; *Echinacanthus attenuatus* JQ933316; *Echinochloa crus-galli* AM887871; *Echinops exaltatus* L13650; *Eclipta prostrata* JQ933318; *Edgaria darjeelingensis* JQ933319; *Edgeworthia chrysantha* AJ297920; *Ehretia anacua* AJ247617; *Eichhornia crassipes* U41574; *Elaeagnus angustifolia* U17038; *Elaeocarpus sphaericus* AF206765; *Elatine triandra* AB233853; *Elatostema acuminatum* AY208702; *Eleocharis atropurpurea* Y13012; *Elephantopus scaber* JQ933320; *Eleusine indica* AM887880; *Ellisiophyllum pinnatum* JQ933321; *Elsholtzia stauntonii* U28872; *Elymus sibiricus* AY772669; *Elytrophorus globularis* AJ746287; *Emilia sonchifolia* JQ933323; *Engelhardia fenzlii* AY147095; *Enkianthus campanulatus* L12616; *Ensete ventricosum* AF243843; *Entada pursaetha* JQ933324; *Ephedra Gerardiana* AY755792; *Epigeneium acuminatum* D58410; *Epilobium rigidum* AF495763; *Epipactis helleborine* Z73707; *Eragrostiella nardoides* JQ933326; *Eragrostis minor* AM849338; *Eranthemum pulchellum* (=nervosum) JQ933327; *Erechtites valerianaefolia* JQ933328; *Eria ferruginea* AF074164; *Erigeron multiradiatus* JQ933329; *Eriobotrya japonica* U06800; *Eriocaulon microcephalus* L10252; *Erioglossum rubiginosum* AY724351; *Eriolaena spectabilis* AJ233126; *Eriophorum vaginatum* Y12951; *Eriosema* sp. JQ933330; *Erodium stephanianum* DQ452871; *Eryngium gigantum* DQ1133808; *Erysimum capitatum* AY167980; *Erythrina speciosa* AB045801; *Erythralium scandens* DQ790164; *Eucalyptus globulus* NC_008115; *Eugenia uniflora* AF294255; *Eulalia aurea* AM849410; *Eulophia nuda* AF074170; *Euodia hupehensis* FN552679; *Euonymus hamiltonianus* AB233942; *Eupatorium atropurpureum* L13649; *Euphorbia pulcherrima* AY794819; *Euphrasia disjuncta* AY849863; *Eurya chinensis* AF089714; *Euryale ferox* M77035; *Eutrema lancifolia* JQ933332; *Evolvulus glomeratus* AY101012; *Exacum affine* L11684; *Exbucklandia populnea* AF081071; *Excoecaria cochinchinensis* AJ418809; *Fagopyrum tataricum* D86287; *Festuca rubra* AJ746261; *Ficus pumila* AF500352; *Filago hordwarica* JQ933335; *Filipendula vulgaris* U06804; *Fimbristylis complanata* Y13009; *Firmiana simplex* AY082355; *Flacourtia jangomas* AF206768; *Flemingia macrophylla* JQ933336; *Floscopa scandens* AF312255; *Flueggea virosa* AB233919; *Foeniculum vulgare* D44567; *Fragaria x ananassa* U06805; *Fraxinus chinensis* DQ673301; *Fritillaria meleagris* AY395537; *Gagea lutea* AB034752; *Galactia tashiroi* AB045803; *Galearia spectabilis* AY381121; *Galeopsis bifida* JQ933337; *Galinoga quadriradiata* JQ933338; *Galium aparine* X81091; *Gamblea ciliata* JQ933339; *Gamochoaeta pensylvanica* EU384977; *Garcinia xanthochymus* AF518391; *Gardenia thunbergia* X83637; *Gardneria angustifolia* AJ235819; *Gastrochilus formosanus* JQ933340; *Gaultheria miqueliana* AF124590; *Geissaspis tenella* JQ933342; *Gentiana procera* L14398; *Gentianella rapunculoides* Y11862; *Geodorum densiflorum* JQ933343; *Geranium multiflorum* U77907; *Gerbera jamesonii* L13643; *Geum macrophyllum* U06806; *Ginkgo biloba* D10733; *Girardinia diversifolia* JQ933344; *Glechoma hederacea* Z37391; *Globba curtisii* L05449; *Glochidion puberum* AY663586; *Gloriosa superba* D28867; *Glyceria fluitans* AJ746290; *Glycine tabacina* U74197; *Glycosmis pentaphylla* AF066820; *Glycyrrhiza glabra* Z70171; *Gmelina hystrix* U28873; *Gnaphalium* sp. AM234874; *Gnetum montanum* AY056575; *Gochnatia paucifolia* AY874433; *Gomphogyne cissiformis* EU436382; *Gomphostemma javanicum* AF501986; *Gomphrena elegans* AY270088; *Gonostegia hirta* GQ436551; *Goodyera pubescens* AF074174; *Gossypium hirsutum* NC_007944; *Gouania mauritiana* AJ390040; *Grangea maderaspatana* JQ933347; *Grevillea robusta* AF193973; *Grewia occidentalis* AJ233152; *Gueldenstaedtia himalaica* JQ933348; *Guizotia abyssinica* NC_010601; *Gymnadenia conopsea* JQ933349; *Gymnema sylvestris* JQ933350; *Gymnopetalum integrifolium* DQ535754; *Gynocardia odorata* AJ402957; *Gynostemma pentaphyllum* AY968523; *Gypsophila repens* JQ933351; *Habenaria repens* AF074177; *Halenia elliptica* JQ933353; *Halerpestes cymbalaria* AY954490; *Hedera helix* L01924; *Hedinia tibetica* JQ933355; *Hedychium flavescens* AF243848; *Hedyotis fruticosa* Z68799; *Hedysarum vicioides* U74246; *Helianthus annuus* NC_007977; *Helicia* sp. DQ875853; *Helicteres angustifolia* AY082356; *Helictotrichon requienii* EF125144; *Helinus integrifolius* AJ390044; *Heliotropium arborecens* L14399; *Helwingia japonica* L11226; *Hemarthra altissima* GU135209; *Hemerocallis fulva* L05036; *Hemidesmus indicus* JQ933357; *Hemiphragma heterophyllum* AF123667; *Hemistepta lyrata* JQ933358; *Heracleum sphondylium* AY395540; *Hermidium lanceum* JQ933359; *Herpetospermum pedunculatum* DQ535818; *Heteropanax fragrans* JQ933360; *Heteropogon contortus* AM235061; *Heterostemma acuminatum* JQ933361; *Hibiscus rosa-sinensis* AY082359; *Hieracium umbellatum* JQ933362; *Hierochloa brunoni* AY691634; *Himalayacalamus cupreus* EF125081; *Hippophae salicifolia* U59821; *Hippuris vulgaris* AF248028; *Hiptage benghalensis* AF344481; *Holarrhena pubescens* AJ002884; *Holboellia latifolia* L37918; *Holmskioldia sanguinea* U28874; *Holoptelea integrifolia* D86315; *Holostemma ada-kodien* JQ933364; *Homalium racemosum* AJ418822; *Hordeum vulgare* NC_008590; *Horsfieldia basifissa* GQ248618; *Houttuynia cordata* AB205610; *Hovenia dulcis* AJ390039; *Hoya serpens* JQ933365; *Hydrangea macrophylla* L11187; *Hydrilla verticillata* AB004891; *Hydrobryum japonicum* D89475; *Hydrocotyle sibthorpioides* D44570; *Hydrolea ovata* L14293; *Hymenachne amplexicaulis* AM849392; *Hymenodictyon flaccidum* AJ347014; *Hypecum imberbe* U86628; *Hypericum perforatum* AF206779; *Hyperoestes forsskaolii* L12593; *Hypoxis leptocarpa* Z73702; *Iberis amara* JQ933366; *Ichnanthus vicinus* AM849354; *Ichnocarpus fragrans* JQ933367; *Ilex repanda* AY725859; *Impatiens amplexicaulis* AB043532; *Imperata cylindrica* AJ784826; *Incarvillea emodi* JQ933368; *Indigofera glomerata* AM235008; *Inula sericea* AY874438; *Iphigenia indica* AJ417893; *Ipomoea purpurea* EU118126; *Iresine palmeri* AY270101; *Iris germanica* L05037; *Isachne arundinacea* AM849337; *Ischemum koleostachys* AM849411; *Isolepis setacea* Y12962; *Isopyrum anemonoides* EF437142; *Ixeris makinoana* JQ933369; *Ixora parviflora* AJ224844; *Jacaranda sparreri* DQ12647; *Jasminum mesnyi* DQ73296; *Jatropha integerrima* AY794902; *Juglans nigra* U00437; *Juncus articulatus* AY395543; *Juniperus communis* AY988260; *Jurinea dolomiaea* JQ933370; *Justicia odora* L01930; *Kaempferia galanga* GQ436409; *Kalanchoe daigremontiana* L11189; *Keraymonia nepalensis* JQ933371; *Kickxia incana* JQ933372; *Knema latericia* L12653; *Knoxia platycarpa* AJ288631; *Kobresia simpliciscula* U49232; *Kochia densiflora* AY489264; *Koeleria cristata* AJ746262; *Koenigia islandica* EF653763; *Kohautia caespitosa* Z68800; *Krascheninnikovia ceratoides* AY270105; *Kydia jujubifolia* JQ933373; *Kyllinga bulbosa* Y12979; *Lablab* sp. JQ933374; *Lactuca sativa* NC_007578; *Lagenaria siceraria* DQ535825; *Lagerstroemia indica* AY905412; *Laggera alata* JQ933375; *Lalldhwojia staintonii* JQ933376; *Lamium amplexicaule* Z37399; *Lancea tibetica* JQ933377; *Lantana camara* AF156736; *Laportea canadensis* AF500356; *Lappula squarrosa* JQ933378; *Larix occidentalis* X63663; *Lasia spinosa* L10250; *Lasianthus batangensis* AY538499; *Lasiocaryum diffusum* JQ933379; *Lathyrus pratensis* AY395544; *Launaea secunda* JQ933380; *Lavatera acerifolia* AJ233122; *Lawsonia inermis* AY905413; *Lecanthis peduncularis* JQ933381; *Leea guineensis* AJ235783; *Leersia oryzoides* U13228; *Legousia falcata* AY655152; *Leibnitzia nepalensis* JQ933382; *Lemna minor* NC_010109; *Lens culinaris* JQ933383; *Leonotis leonurus* AM234998; *Leontopodium jacotianum* JQ933384; *Leonurus japonicus* FJ513159; *Lepidagathis villosa* L12594; *Lepidium virginicum* NC_009273; *Lepionurus sylvestris* DQ790131; *Lepisanthes alata* AY724360; *Leptadenia reticulata* EU196282; *Leptocodon gracilis* EU713389; *Leptodermis potanini* DQ662180; *Lepyrodiclis holosteoides* JQ933385; *Lespedeza cuneata* U74215; *Leucaena leucocephala* JQ933386; *Leucanthemum vulgare* AY395546; *Leucas capensis* AM234999; *Leycesteria formosa* AF446932; *Lignariella hobsonii* subsp. *serpens* JQ933388; *Ligularia mertonii* JQ933389; *Ligusticum sinense* D44572; *Ligustrum vulgare* DQ673302; *Lilium bakerianum* AB034923; *Lindelofia longiflora* JQ933390; *Lindenbergia philippinensis* AF123664; *Lindera benzoin* AY337732; *Lindernia antipoda* AB259810; *Linum arboreum* AY380351; *Liparis lilifolia* AF518046; *Lipocarpha microcephala* Y12991; *Listera smallii* AF074184; *Litchi chinensis* AY724361; *Lithocarpus wallichianus* AB125015; *Lithospermum* sp. AM234928; *Litsea cubeba* AY337734; *Lloydia serotina* Z77294; *Lobelia cardinalis* AF042659; *Lolium perenne* NC_009950; *Lomatogoniopsis alpina* JQ933391; *Lonicera orientalis* X87389; *Lophopetalum sessilifolium* AJ402969; *Loranthus europaeus* JQ933393; *Lotus corniculatus* U74213; *Luculia grandifolia* X83648; *Ludwigia hyssopifolia* AY036152; *Luffa acutangula* DQ535826; *Luzula multiflora* AJ419945; *Lycianthes* sp. FJ914173; *Lycium chinense* AB051022; *Lycopersicon esculentum* L14403; *Lyonia ligustrina* AF124578; *Lysimachia congestiflora* AF213820; *Macaranga tanarius* AB233866; *Macfadyena unguis-cati* AF102649; *Maclura pomifera* D86318; *Macro-*

panax dispermus JQ933394; *Macrosolen cochinchinensis* JQ933395; *Macrotyloma uniflorum* JQ933396; *Madhuca microphylla* AF421096; *Maesa myrsinoides* Z80203; *Magnolia pterocarpa* AY008931; *Mahonia bealei* L75871; *Maianthemum hondoense* D17380; *Malaxis spicata* AF074188; *Mallotus japonicus* AB267923; *Malus baccata* GU363810; *Malva verticillata* JQ933397; *Malvaviscus arboreus* var. *penduliflorus* JQ933398; *Mandragora officinalis* U08614; *Mangifera indica* U39269; *Manglietia aromatica* AY008920; *Manilkara zapota* L01932; *Maoutia puya* JQ933399; *Marrubium vulgare* U28875; *Marsdenia carvalhoi* JQ933400; *Martynia annua* JQ933401; *Maytenus hookeri* AF499234; *Mazus stachydifolius* EU348860; *Meconopsis horridula* JQ933402; *Medicago lupulina* AY395551; *Medinilla humbertiana* AF215517; *Meeboldia digitata* JQ933403; *Megacarpaea polyandra* JQ933404; *Melasma scabrum* AF190904; *Melastoma malabathricum* AF270748; *Melia azedarach* EU042973; *Melica uniflora* AJ746263; *Melilotus officinalis* JQ933405; *Meliosma simplicifolia* AF197587; *Melissa officinalis* Z37414; *Melocanna baccifera* EF125082; *Melochia corchorifolia* JQ933406; *Melodorum fruticosum* AY319071; *Mentha longifolia* AY570390; *Menyanthes trifoliata* L14006; *Mercurialis leiocarpa* AB233867; *Merremia umbellata* AY100989; *Merrillionanox cordifolius* AY753243; *Mesua ferrea* AY625024; *Meyna tetraphylla* X83649; *Michelia champaca* DQ182336; *Microgynoeicum tibeticum* AY270107; *Micromelum ceylanicum* AF320853; *Micromeria juliana* JQ933407; *Microsisymbrium minutiflorum* JQ933408; *Microstegium* sp. AM849387; *Mikania micrantha* JQ933409; *Milium velutinum* AY318993; *Milletia japonica* U74233; *Milula spicata* JQ933410; *Mimosa spegazzinii* Z70151; *Mimulus aurantiacus* AF026835; *Minuartia verna* var. *gerardii* JQ933411; *Mirabilis jalapa* M62565; *Miscanthus capensis* AM235066; *Mitragyna diversifolia* AJ346985; *Mitrasacme pilosa* AJ235821; *Mitreola petiolata* AJ235822; *Mollugo verticillata* M62566; *Momordica charantia* DQ535760; *Monochoria vaginalis* U41591; *Monotropastrum humile* JQ933412; *Morina longifolia* AF446945; *Morinda citrifolia* X83651; *Moringa oleifera* L11359; *Morus indica* NC_008359; *Mosla chinensis* FJ513158; *Mucuna nigricans* AB045812; *Muhlenbergia racemosa* AJ784836; *Mukia maderaspatana* DQ535761; *Munronia pinnata* AY128237; *Murdannia clarkeana* AF312256; *Murraya paniculata* U38860; *Musa acuminata* EU017045; *Mussaenda erythrophylla* X83652; *Mycetia malayana* Z68806; *Myosotis discolor* AY395552; *Myriactis nepalensis* JQ933415; *Myrica cefera* AF119179; *Myricaria squamosa* AY099906; *Myriophyllum exaltatens* L11195; *Myristica fragrans* AY298839; *Myrsine africana* U96652; *Najas minor* AB004899; *Nannoglottis hookeri* JQ933416; *Naravelia zeylanica* FJ626585; *Nasturtium officinale* AF020325; *Neanotis ingrata* JQ933417; *Nechamandra alternifolia* U80706; *Neillia sinensis* U06813; *Nelsonia campestris* L01935; *Nelumbo nucifera* M77033; *Neolamproloma clavigera* DQ535830; *Neocinnamomum caudatum* JQ933418; *Neolitsea cassia* AY298841; *Neottia nidus-avis* AY368364; *Neottianthe cucullata* JQ933420; *Nepeta cataria* Z37421; *Nerium oleander* AJ002886; *Nervilia bicarinata* AF074199; *Neyraudia reynaudiana* EF125109; *Nicandra physalodes* U08615; *Nicotiana tabacum* NC_001879; *Nigella damascena* EU053918; *Notholirion bulbuliferum* AF275991; *Nyctanthes arbor-tristis* DQ673295; *Nymphaea alba* AJ627251; *Nymphoides peltata* X87392; *Oberonia acaulis* JQ933422; *Ochna serrulata* AB233908; *Ocimum basilicum* Z37425; *Oenanthe javanica* D44577; *Oenothera fruticosa* AF495771; *Olax aphylla* DQ792943; *Olea europaea* DQ673304; *Omphalogramma elwesiana* AF395001; *Onosma graecum* EU599860; *Operculina turpethum* AY100988; *Ophiopogon japonicus* AB029842; *Ophiorhiza mungos* X83656; *Oplismenus compositus* AM849368; *Opuntia dillenii* AY875233; *Origanum vulgare* Z37427; *Ormosia emarginata* U74231; *Oroxylum indicum* AF102651; *Orthanthera jasminum* JQ933426; *Oryza sativa* NC_008155; *Oryzopsis cf. munroi* JQ933427; *Osbeckia chinensis* AF215525; *Osmanthe americana* DQ673311; *Osmorhiza aristata* D44578; *Ostodes paniculata* AY794900; *Osyris lanceolata* L11196; *Ottelia alismoides* U80707; *Oxalis corniculata* AB233943; *Oxygraphis glacialis* FJ626587; *Oxyria sinensis* AF291748; *Oxystelma esculentum* EU196284; *Oxytropis anertii* EF685981; *Paederia scandens* AY654280; *Paeonia suffruticosa* AJ402982; *Paliurus spina-cristi* AJ390051; *Panax ginseng* NC_006290; *Panicum canariense* AF116975; *Pandanus tectorius* AY952439; *Pandorea jasminoides* AF102652; *Panicum miliaceum* AM849333; *Panisea uniflora* JQ933430; *Papaver* sp. AM235045; *Parabaena sagittata* FJ026497; *Paracalyx schweinfurthii* JQ933431; *Paraquilegia microphylla* EF437146; *Parietaria pensylvanica* AF500357; *Paris polyphylla* D28155; *Parnassia tenella* AY935733; *Parochetus africanus* JQ933432; *Parthenium hysterophorus* JQ933433; *Parthenocissus himalayana* AJ419726; *Paspalum conjugatum* AM849399; *Passiflora quadrangularis* L01940; *Patrinia triloba* AF446951; *Pavetta lanceolata* Z68865; *Pecteilis susanna* JQ933434; *Pedicularis foliosa* AF026836; *Pegaeophyton nepalense* JQ933435; *Peliosanthes campanulata* AB029845; *Pennisetum longissimum* AM849356; *Pentanema vestitum* JQ933436; *Pentasachme wallichii* JQ933437; *Peperomia tamoyoi* AY572271; *Peracarpa carnosus* JQ933438; *Pergularia tomentosa* AY545885; *Pericampylus glaucus* DQ099442; *Perilla frutescens* FJ513160; *Periploca graeca* AM002889; *Pterostrophe cernua* AM234782; *Perotis rara* EF125098; *Persea americana* AY337727; *Persicaria punctata* EF653783; *Petalidium oblongifolia* JQ933440; *Petasites tricholobus* JQ933441; *Peucedanum galbanum* AM234823; *Phaenochium jafrii* JQ933442; *Phagnalon niveum* JQ933443; *Phaius minor* AF074210; *Phalaenopsis aphrodite* NC_007499; *Phalaris arundinacea* AJ784827; *Phaseolus vulgaris* EU196765; *Phaulopsis pulchella* JQ933444; *Philadelphus hirsutus* AF323193; *Phleum pratense* AJ746298; *Phlomis melanantha* JQ933445; *Phoenix dactylifera* AY012468; *Photinia fraseri* L11200; *Phragmites australis* AJ746299; *Phryma leptostachya* U28881; *Phrynium imbricatum* AY656123; *Phyllanthus emblica* AY765269; *Physoalis alkekengi* U08617; *Physospermopsis obtusiuscula* JQ933446; *Phytolacca americana* M62567; *Picea smithiana* AF145458; *Picrasma javanica* EU043011; *Picris hieracioides* subsp. *kaimensis* JQ933447; *Pieris formosa* AB206594; *Pilea pumila* U00438; *Pilosiloides hirsuta* EU384975; *Pimpinella saxifraga* U50229; *Pinanga simplicifrons* AJ829898; *Pinguicula caerulea* L01942; *Pinus wallichiana* X58131; *Piper nigrum* EF450315; *Piptanthus nepalensis* Z70123; *Pistacia vera* AJ235786; *Pistia stratiotes* M96963; *Pisum sativum* X03853; *Pithecellobium mexicanum* Z70150; *Pittosporum japonicum* L11202; *Plantago lanceolata* L36454; *Platanthera ciliaris* AF074215; *Platystemma violoides* JQ933449; *Plectranthus barbatus* U28882; *Pleione formosana* AF264173; *Pleurospermum camtschaticum* D44583; *Plumbago zeylanica* Y16905; *Plumeria inodora* X91767; *Poa trivialis* AY395555; *Podocarpus neriiifolius* AF249618; *Podochilus cultratus* AF074218; *Podophyllum peltatum* AF093716; *Pogonatherum panicum* AM849381; *Pogostemon patchouli* L14406; *Poikilospermum* sp. AF500362; *Polemonium reptans* L11687; *Polia hasskarlii* AF312262; *Polycarpon tetraphyllum* AY270144; *Polygala arillata* AM234210; *Polygonatum oppositifolium* AM029830; *Polygonum aviculare* EF653761; *Polypogon lutosus* EF125145; *Ponerorhynchus chusua* JQ933451; *Pongamia pinnata* AY289676; *Populus deltoides* AF133677; *Porana velutina* AY101027; *Portulaca oleracea* AY875249; *Potamogeton crispus* U80722; *Potentilla fruticosa* U06818; *Pythos scandens* JQ933452; *Pratia nummularia* DQ356164; *Premna microphylla* U28883; *Prenanthes aspleniifolia* JQ933454; *Primula involucreta* AF394974; *Prinsepia uniflora* U06819; *Procris insularis* AY208706; *Prunella vulgaris* AY395556; *Prunus x yedoensis* AF329005; *Pseudaechmanthera glutinosa* JQ933455; *Pseudechinolaena polystachya* AM849344; *Pseuderanthemum tunicatum* JQ933456; *Pseudostellaria heterantha* JQ933457; *Psidium cattleianum* GU135194; *Psilotrichum gnaphalobryum* JQ933458; *Psoralea aculeata* AM235013; *Psychotria nervosa* AJ002186; *Pternopetalum tanakae* D44584; *Pterocarpus marsupium* JN083731; *Pterocarpus hookeri* AF446946; *Pterospermum celebicum* AJ233136; *Pueraria montana* AB045822; *Pulicaria scabra* AM234906; *Punica granatum* L10223; *Putranjiva roxburghii* AY663641; *Pycreus nuerensis* Y13004; *Pygeum zeylanicum* JQ933459; *Pyracantha coccinea* DQ860501; *Pyrola rotundifolia* L12622; *Pyrostegia venusta* JQ933460; *Pyrularia pubera* DQ329179; *Quercus glauca* AB060571; *Quisqualis indica* L01948; *Randia truncata* AJ286701; *Ranunculus cantoniensis* AY954489; *Raphanus sativus* EF590571; *Raphistemma pulchellum* JQ933462; *Rauvolfia mannii* X91769; *Reinwardtia indica* L13188; *Reissantia* sp. AJ402996; *Remusatia vivipara* JQ933463; *Rhamnella franguloides* AJ390027; *Rhamnus prinoidea* AM235104; *Rhaphidophora crassifolia* AM905741; *Rheum nobile* AF297147; *Rhododendron tomentosum* AF421101; *Rhus copallina* U00440; *Rhynchoglossum notonianum* AF206817; *Rhynchosia minima* AB045823; *Rhynchospermum verticillatum* JQ933465; *Rhynchospora nervosa* Y12977; *Ribes aureum* L11204; *Ricinus communis* AY794915; *Riocreuxia torulosa* AM234841; *Rodgersia pinnata* U06214; *Rorippa indica* D88907; *Rosa woodsii* U06824; *Rotala indica* AY036148; *Rubia tinctorum* X83666; *Rubus idaeus* U06825; *Ruellia graecizans* L12595; *Rumex acetosa* AY395559; *Rungia pectinata* JQ933466; *Ruta graveolens* AY128251; *Sabia campanulata* AM183414; *Saccharum officinarum* AP006714; *Sacciolepis indica* AM887870; *Sageretia thea* AJ225785; *Sagina saginoides* JQ933467; *Sagittaria latifolia* L08767; *Salix babylonica* AB012782; *Salsola genistoides* AY270128; *Salvia plebeia* AB295077; *Sambucus caerulea* AJ420867; *Sanguisorba officinalis* AY395560; *Sanicula elata* AM234825; *Santalum album* L26077; *Sapindus saponaria* AY724366; *Sapium laurocerasum* AY794842; *Saraca palembanica* AM234238; *Sarcococca confusa* AF197588; *Sarcostemma viminale* JQ933468; *Satyrion nepalense* AF074226; *Saurauia nepalensis* Z83147; *Sauromatum guttatum* EU193200; *Sauropus racemosus* AY663617; *Saussurea roylei* JQ933469; *Saxifraga cernua* U06215; *Schefflera elegantissima* DQ133821; *Schima wallichii* AF380056; *Schisandra sphenanthera* L12665; *Schleichera oleosa* AY724367; *Schoenoplectiella articulatus* Y12987; *Schoenorchis paniculata* JQ933470; *Schoepfia schreberi* L11205; *Schulzia dissecta* JQ933471; *Scindapsus aureus* AJ005625; *Scirpus polystachyus* Y12974; *Scleria terrestris* Y12947; *Sclerocarpaceae* JQ933472; *Scopolia mundii* AM235122; *Scorzonera divaricata* JQ933473; *Scrophularia* sp. L36449; *Scurrula* sp. JQ933474; *Scutellaria orientalis* Z37460; *Sebaea* sp. AM234984; *Sechium edule* AY862553; *Securidaca diversifolia* L01955; *Securinega capuronii* AY663621; *Sedum rubrotinctum* L01956; *Selinum cortioides* JQ933475; *Semecarpus* sp. JQ933476; *Senecio burchellii* AM234911; *Serissa foetida* Z68822; *Serratula stragulata* JQ933477; *Sesamum indicum* L14408; *Sesbania sesban* Z95541; *Seseli yunnanense* JQ933478; *Setaria palmifolia* AM849389; *Shorea talura* AJ247623; *Shuteria vestita* AB045824; *Sibbaldia cuneata* JQ933479; *Sida* sp. AM235027; *Siegesbeckia orientalis* JQ933480; *Silene vulgaris* EF646883; *Sinocarum wolffianum* JQ933481; *Sison amomum* JQ933482; *Sisymbrium irio* AY167982; *Skimmia anquetilla* AF066818; *Sloanea latifolia* AF022131; *Smilacina racemosa* AY149376; *Smilax glauca* AF206822; *Smithia sensitiva* JQ933483; *Smitinandia micrantha* JQ933484; *Solanum bulbocastanum* NC_007943; *Solena heterophylla* DQ535851; *Solidago juncea* DQ006068; *Soliva anthemifolia* JQ933485; *Sonchus*

wightianus subsp. wallichianus JQ933486; *Sophora bhutanica* U74226; *Sopubia trifida* JQ933487; *Sorbaria arborea* U06826; *Sorbus scopulina* U06827; *Sorghum bicolor* NC_008602; *Soroseris pumila* JQ933488; *Spathoglottis plicata* AF264175; *Spatholobus parviflorus* AB045825; *Spergula rubra* AY270146; *Spermadictyon suaveolens* Z68824; *Sphaeranthus indicus* JQ933489; *Sphenoclea zeylanica* L1879; *Spilanthes iabadicensis* JQ933490; *Spiraea* x L11206; *Spiranthes cernua* AF074229; *Spirodela polyrhiza* AY034222; *Spondias cytherea* U39274; *Sporobolus festivus* AM849383; *Stachys sylvatica* Z37464; *Stachyurus praecox* DQ307101; *Staphylea colchica* EU002285; *Stellaria media* M62570; *Stellera chamaejasme* AJ295262; *Stephania venosa* EU526996; *Sterculia lanceolata* AY082362; *Stereospermum nematocarpum* JQ933491; *Stipa dregeana* U31442; *Streblus pendulinus* AF500353; *Streptopus lanceolatus* D17381; *Striga gesnerioides* AF026839; *Strobilanthes isophyllus* JQ933492; *Strychnos nux-vomica* L14410; *Styrax chinensis* AF396157; *Swertia teres* JQ933493; *Swida controversa* AF190433; *Symplocos costata* Z80192; *Synedrella nodiflora* JQ933494; *Syringa vulgaris* DQ673303; *Syzygium venosum* JQ933495; *Tabernaemontana divaricata* X91772; *Tadehagi triquetrum* JQ933496; *Tagetes erecta* L13637; *Talauma ovata* L12666; *Talinum paniculatum* AY875214; *Tamarindus indica* Z70160; *Tamarix pentandra* Z97650; *Tanacetum atkinsonii* JQ933497; *Taraxacum officinale* AY395562; *Taxillus sclerophyllus* JQ933498; *Taxus wallichiana* DQ478796; *Tectona grandis* U28884; *Telosma pallida* JQ933500; *Tephrosia grandiflora* Z95542; *Terminalia catappa* U26338; *Ternstroemia gymnanthera* AF421106; *Tetracentron sinense* L12668; *Tetrameles nudiflora* AF206828; *Tetrastigma hookeri* AJ419715; *Teucrium flavum* Z37466; *Thalictrum javanicum* AY954496; *Thamnocalamus spathiflorus* EF125087; *Thelasis carinata* AF518047; *Thermopsis fabacea* Z70121; *Thesium strictum* AM235126; *Thespesia populnea* L01961; *Thladiantha dubia* DQ535733; *Thlaspi arvense* JQ933501; *Thunbergia mysorensis* AY008828; *Thunia alba* AF074233; *Thylacospermum caespitosum* JQ933502; *Thymus vulgaris* Z37472; *Thysanolaena maxima* U31380; *Tiarella polyphylla* AB003276; *Tiliacora acuminata* EU526997; *Tinospora caffra* L37923; *Tipularia discolor* AF074234; *Tithonia diversifolia* JQ933503; *Toddalia asiatica* JQ933504; *Tofieldia glutinosa* AF543717; *Tongoloa gracilis* JQ933505; *Toona* sp. AY128243; *Tordyliopsis brunonis* JQ933506; *Torenia fournieri* AB259804; *Toricellia liliifolia* AF299089; *Torilis japonica* D44590; *Torularia humilis* JQ933507; *Trachelospermum jasminoides* AJ002890; *Trachycarpus fortunei* AY012460; *Trachyspermum anethifolium* JQ933508; *Tragia urticifolia* AY794925; *Tragopogon pratensis* AY395563; *Trapa natans* L10226; *Trema orientalis* D86313; *Treutlera* sp. JQ933509; *Trevesia palmata* U50258; *Trewia nudiflora* AY663648; *Trianthema portulacastrum* M62572; *Tribulus terrestris* AM235167; *Trichilia emetica* AY128244; *Trichodesma africanum* AM234930; *Tricholepis furcata* JQ933510; *Trichosanthes ovigera* DQ535856; *Tricyrtis macrantha* AB034749; *Tridax procumbens* JQ933511; *Trifolium pratense* AY395564; *Triglochin palustris* DQ859176; *Trigonella ornithopodioides* JQ933512; *Trigonotis ovalifolia* JQ933513; *Trillidium govanianum* AB018839; *Triosteum perfoliatum* AJ420871; *Triplostegia glandulifera* AF446949; *Tripogon minimus* AM849342; *Trisetum flavescens* AY395565; *Triticum aestivum* AB042240; *Triumfetta annua* JQ933514; *Trollius laxus* AY954486; *Tsuga dumosa* AF145460; *Tupistra grandis* AB029838; *Turpinia occidentalis* AY646110; *Tussilago farfara* JQ933515; *Tylophora sylvatica* X91780; *Typha angustifolia* AY952434; *Typhonium venosum* AF497113; *Ulmus americana* AF500337; *Uncaria africana* AJ347006; *Uraria lagopus* JQ933516; *Urena lobata* GU135283; *Urginea maritima* JQ933517; *Urochloa maxima* AM849390; *Urtica dioica* AF500361; *Utricularia biflora* L13190; *Uvaria lucida* AY238957; *Vaccinium meridionale* AF124576; *Valeriana jatamansi* AF446950; *Vallisneria spiralis* JQ933518; *Vallisneria asiatica* AB004898; *Vandopsis gigantea* JQ933519; *Ventilago viminalis* AJ390035; *Verbascum thapsus* L36452; *Verbena officinalis* Z37473; *Vernonia mespilifolia* L13646; *Veronica persica* AY034022; *Vetiveria zizanioides* AM849394; *Viburnum acerifolium* L13928; *Vicatia conifolia* JQ933520; *Vicia cracca* AY395566; *Vigna unguiculata* Z95543; *Vincetoxicum hirundinaria* AJ419769; *Viola* sp. AJ247621; *Viscum articulatum* EF464517; *Vitex agnus-castus* U78716; *Vitis vinifera* NC_007957; *Wahlenbergia gloriosa* AY655161; *Waldheimia glabra* JQ933522; *Wallichia disticha* AJ404792; *Wedelia montana* JQ933523; *Wendlandia notoniana* AM117283; *Wikstroemia gemmata* AJ297223; *Withania somnifera* DQ353868; *Wolffia globosa* AY034257; *Woodfordia fruticosa* AY036136; *Wrightia arborea* AJ002891; *Xanthium strumarium* DQ006070; *Xylosma buxifolium* AJ418834; *Xyris capensis* AJ286563; *Youngia racemifera* JQ933524; *Yushania maling* AJ746277; *Zannichellia palustris* U03725; *Zanthoxylum monophyllum* U39282; *Zea mays* X86563; *Zehneria scabra* AM234970; *Zephyranthes filifolia* AF116990; *Zeuxine strateumatica* JQ933525; *Zingiber gramineum* AF243850; *Zinnia elegans* JQ933526; *Ziziphys ornata* AJ390052; *Zornia cantoniensis* U74235.

Table S22. Taxa included in the phylogenetic analysis for genera of the flora of New Zealand based on *rbcl* plastid sequences

GenBank accession numbers are given for each taxon.

Abrotanella linearifolia JQ933200; Abutilon sp. AM235023; Acacia cavenia Z70145; Acaena sp. AM235106; Acanthus montanus L12592; Acer pseudoplatanus DQ978425; Achnatherum calamagrostis JQ933203; Acianthus exsertus AF074101; Aciphylla glacialis JQ933204; Ackama paniculosa AF291921; Actinidia chinensis L01882; Adenochilus nortonii AY381108; Agapanthus africanus AY465699; Agathis moorei AMU87755; Agave ghiesbreghtii AF206729; Ageratina luciae-brauniae HQ416169; Ageratum conyzoides GQ436453; Agrostis capillaris AY395527; Ajuga reptans U32163; Akebia quinata L12627; Alectryon connatus AY724341; Allium dregeanum AM234798; Alnus glutinosa EU644678; Alocasia odora AM905802; Alopecurus pratensis AY395528; Alseuosmia macrophylla X87377; Alternanthera pungens AY270054; Ammophila breviligulata AJ784835; Andropogon gerardii AJ784818; Anemanthele lessoniana EF125158; Anemone tenuifolia AM235090; Angelica sylvestris DQ133798; Anisotome haastii FQ293219; Anredera cordifolia AY270147; Apium graveolens L01885 Apodasmia sp. JQ933222; Aporostylis bifolia AY381109; Araujia hortorum AJ419734; Archgeria hirtella JQ933224; Arctium lappa AB530978; Arctotheca calendula AM234848; Aristeia glauca Z77282; Aristotelia serrata AF307904; Arthropodium cirrhatum Z69233; Arum italicum GU067578; Arundo donax ADU31360; Ascarina lucida AF238050; Asparagus officinalis AY149374; Asphodelus aestivus AJ512314; Astelia linearis AF307905; Atriplex halimus AY270059; Australopyrum calcis AY691636; Austrofestuca littoralis JQ933231; Austrostipa sp. JQ933232; Avicennia alba AY008831; Azorella selago DQ133803; Banksia ericifolia DQ875843; Baumea rubiginosa AY725940; Beilschmiedia tawa JQ933233; Berberis fortunei FJ449857; Betula papyrifera X56617; Bidens polylepis DQ006061; Bolboschoenus fluviatilis GQ130358; Brachycome clavis JQ933242; Brachyglottis repanda JQ933243; Bromus hordeaceus AY395531; Brugmansia suaveolens HM849829; Bryonia dioica DQ535786; Buddlejia davidii AJ001757; Bulbinella nana AJ512325; Bulbophyllum lobbii AF074115; Caesalpinia pulcherrima Z70153; Caladenia cf caerulea AF074116; Callistemon citrinus AM235652; Callitriche stagnalis FQ284023; Calluna vulgaris L12601; Calochilus robertsoni AF074118; Calystegia sepium AY100992; Canavalia rosea AB045793; Canna indica L05445; Cardamine flexuosa D88905; Carduus edelbergii JQ933253; Carex monostachya Y12998; Carmichaelia sp. AF308705; Carpha alpina AF307909; Carpobrotus edulis AM234787; Carpodetus serratus Y08461; Cassytha filiformis JQ933256; Celastrus orbiculatus AY788194; Celmisia bellidioides JQ933257; Cenchrus echinatus AM849359; Centella asiatica CT1CPRC08; Centipeda sp. JQ933259; Centrolepis strigosa AF148766; Ceratophyllum demersum D89473; Cestrum nocturnum AY206721; Chenopodium auricomum AY270078; Chionochloa flavescens DQ887099; Chrysanthemoides monilifera EU384959; Cirsium arvense AY395534; Citrus sinensis DQ864733; Clematis ganpiniana AY954491; Clianthus puniceus JQ933270; Cobaea scandens Z83143; Collospermum hastatum Y14986; Colobanthus subulatus JQ933274; Convolvulus arvensis AY100993; Coprosma pumila X87146; Cordylina cf stricta AB088818; Coriaria arborea AB016440; Cornus capitata AY530926; Corokia cotoneaster L11221; Cortaderia selloana DQ005609; Corysanthes diemenicus AF074135; Corynocarpus laevigatus AF148994; Cotoneaster horizontalis GU363807; Craspedia incana JQ933282; Crassula marnierana L01899; Crataegus columbiana U06799; Crocosmia mathewsiana AJ577250; Cupressus stephensonii AY988255; Cyathodes glauca U80434; Cynodon dactylon AM849393; Cyperus pulchellus AY040591; Cytisus scoparius Z70086; Dacrycarpus dacrydioides AF249597; Dacrydium cupressinum AF249634; Dactylis glomerata AJ746268; Daucus carota AF207689; Delairea odorata HM849949; Dendrobium aggregatum AF074145; Deschampsia cespitosa EF125152; Desmoschoenus spiralis AJ404701; Dianella intermedia FJ707495; Dichondra occidentalis AY101023; Dipogon lignosus AB045800; Discaria tomatou AF307912; Disphyma crassifolium AM234789; Dodonaea viscosa DQ978445; Donatia novae-zelandiae AF307914; Dracophyllum longifolium L12614; Drapetes muscooides AJ297237; Drosera spathulata AB355695; Dysoxylum gaudichaudianum AY128227; Earina autumnalis AF074155; Echinopogon ovatus JQ933317; Echium virescens EU599869; Egeria densa U80695; Ehrharta erecta AM887883; Elaeagnus angustifolia U17038; Elaeocarpus reticulatus AF291941; Elatine triandra AB233853; Elatostema parvum AY208703; Eleocharis marginulata Y13011; Elingamita johnsonii Z83145; Elodea canadensis DQ859167; Elymus solanderi AY691642; Thinopyrum distichum AM235075; Embergeria grandifolia JQ933322; Embothrium coccineum U79168; Empodisma minus AF148775; Entelea arborescens JQ933325; Epacris lanuginosa U80426; Epilobium rigidum AF495763; Eragrostis minor AM849338; Erica australis L12617; Erigeron tenuis EU384973; Eriobotrya japonica U06800; Eryngium giganteum DQ133808; Erythrina crista-galli Z70170; Eucalyptus globulus AY780259; Euchiton involucreatus JQ933331; Eugenia uniflora AF294255; Euonymus americanus EU002277; Eupatorium atrorubens L13649; Euphorbia abyssinica AY794824; Euphrasia spectabilis AY849864; Ewartia sinclairii JQ933333; Exocarpus sparteus JQ933334; Fallopia japonica AF297131; Fatsia japonica U50245; Festuca rubra AJ746261; Ficinia rigida EF178557; Ficus var iegata FJ976133; Fimbristylis dichotoma Y13008; Forstera bidwillii AJ225055; Fraxinus chinensis DQ673301; Freycinetia scandens AF206770; Gahnia baniensis DQ058342; Galeobdolon luteum Z37400; Galium elongatum X81098; Gastrodia queenslandica JQ933341; Gaultheria miqueliana AF124590; Geniostoma rupestre Z68828; Genista tricuspidata Z70100; Gentianella rapunculoides Y11862; Geranium multiflorum U77907; Geum macrophyllum U06806; Glossostigma elatinoides JQ933345; Glyceria fluitans AY395539; Gonocarpus depressus JQ933346; Gratiola pilosa AF026827; Griselinia littoralis AF307916; Gunnera monoica AF307918; Haastia pulvinaris JQ933352; Hakea archaeoides EU676114; Halocarpus kirkii AF249640; Haloragis serra U26325; Hebe salicifolia JQ933354; Hectorella caespitosa EF551347; Hedera helix L01924; Hedyocarya arborea L12648; Hedyochium flavescens AF243848; Heimerliodendron brunonianum JQ933356; Helichrysum cymosum AM234877; Herpolirion novae-zelandiae Z77303; Hibiscus rosa-sinensis AY082359; Hieracium leucaule GQ120446; Hierochloa brunonis AY691634; Hoheria sexstylosa JQ933363; Holcus lanatus AJ746279; Homalanthus populneus AY380350; Humulus lupulus AF061992; Hydrangea macrophylla L11187; Hydrilla verticillata U80700; Hydrocotyle vulgaris DQ133813; Hypericum perforatum AF206779; Ilex cornuta GQ997347; Impatiens gordonii Z80196; Imperata cheesemaniai AY691637; Ipohigenia indica AJ417893; Ipomoea pes-tigridis AY100978; Iris germanica L05037; Isachne mauritiana AM849388; Isoplepis crassiuscula AB236355; Isotoma fluviatilis subsp. fluviatilis DQ356161; Ixerba brexioides AF084475; Jasminum suavisimum L01929; Jovellana sp. AF123666; Juglans nigra U00473; Juncus triglumis AY216605; Kennedia nigricans EU717283; Knightia excelsa DQ875840; Koeleria aff. AY691645; Korthalsella lindsayi L26073; Kunzea vestita AM235655; Lagarosiphon major U80703; Lantana camara AF156736; Laurelia novae-zelandiae AF206788; Laurus nobilis AF197593; Lemna minor AY034234; Lepidium virginicum D88906; Lepidosperma tortuosum AY725950; Lepidothamnus fonkii AF249642; Lepilaena australis U80729; Leptospermum scoparium AM235656; Lepturus repens AM887876; Leucogenes grandiceps JQ933387; Leucopogon fraseri L12620; Leycesteria formosa AJ420872; Leymus chinensis Z49843; Libertia ixioides AJ309687; Libocedrus plumosa L12574; Ligustrum vulgare DQ673302; Lilaeopsis novae-zelandiae AF466269; Liliium formosanum AB034933; Liparophyllum gunnii EF173092; Litsea monopetala EU128738; Lobelia cardinalis AY655144; Logania vaginalis Z68826; Lolium perenne AJ746293; Lonicera japonica GQ997430; Lophomyrtus bullata JQ933392; Loranthus delavayi HQ317767; Lotus corniculatus U74213; Ludwigia palustris AM235670; Lupinus perennis Z70058; Luzula multiflora AJ419945; Luzuriaga parviflora AF307925; Lycium ferocissimum AM235152; Lycopanthus nigricans AF074187; Lythrum salicaria AF495760; Machaerina sp. DQ058340; Macropiper excelsum AY298836; Malva verticillata JQ933397; Manoa colensoi AF249644; Marsippospermum grandiflorum AJ419946; Mazus pumilus FJ172728; Melicope ternata AF116271; Melicytus novae-zelandiae AB354427; Mentha longifolia AY570390; Meryta sinclairii U50248; Metrosideros excelsa AM235659; Microlaena stipoides AM849377; Microtis parviflora AF074194; Mida salicifolia EF584598; Mimulus aurantiacus AF026835; Miscanthus capensis AM235066; Mitrasacme pilosa AJ235821; Montia fontana JQ933413; Montigena novae-zelandiae JQ933414; Morelotia gahniiformis EF178576; Muehlenbeckia australis FM883618; Myoporum mauritianum L36445; Myosotis discolor AY395552; Myosurus minimus DQ099441; Myricaria squamosa AY099906; Myriophyllum exalbescens L11195; Myrmecchila trapeziformis AF074124; Myrsine africana U96652; Nardus stricta AY622895; Nassella viridula AY622896; Nasturtium officinale AF020325; Neomyrtus pedunculata JQ933419; Nerium oleander GQ997679; Nertera granadensis X83654; Nestegis sandwicensis DQ673305; Nothofagus truncata L13363; Notothlaspi australe JQ933421; Nymphaea alba AJ627251; Ochna serrulata Z75273; Olea europaea GU228899 Olearia chathamica JQ933423; Oplismenus compositus AM849368; Opuntia dillenii AY875233; Oreobolus pectinatus AF307927; Oreomyrrhis hookeri JQ933424; Oreostylidium subulatum AF451619; Orthoceras strictum AF074204; Osteospermum asperulum EU385004; Otellia ovalifolia DQ859171; Oxalis corniculata AB233943; Ozothamnus sp. JQ933428; Pachycladon novae-zelandiae DQ310545; Pachystegia insignis JQ933429; Pandorea jasminoides AF102652; Parahebe catarractae AY034020; Paraserianthes lophantha Z70148; Parietaria pensylvanica AF500357; Parsonia heterophylla AJ002888; Paspalum conjugatum AM849399; Passiflora biflora EU017122; Pelargonium candicans DQ317055; Pennantia corymbosa AJ494842; Pennisetum longissimum AM849356; Pentachondra pumila L12621; Peperomia serpens AY572270; Peraxilla tetrapetala JQ933439; Persicaria decipiens FM883624; Persoonia lanceolata U79178; Phoenix canariensis AM110194; Phormium tenax Z69232; Phragmites australis EF423005; Phyllachne clavigera AF307928; Phyllocladus trichomanoides AY442155; Phyllostachys nigra AJ746272; Physalis peruviana FJ914181; Phytolacca americana FJ860398; Picris hieracioides subsp. kaimensis JQ933447; Pimelea gilgiana AM167534; Pinus muricata DQ353725; Pittosporum tobira U50261; Plagianthus divar ticarus JQ933448; Plantago crassifolia AM235049; Plectranthus barbatus U28882; Pleurophyllum criniferum JQ933450;

Poa trivialis AJ746301; *Podalyria sericea* Z70128; *Podocarpus totara* AF307931; *Polygala peduncularis* AM234214; *Pomaderris rugosa* AJ390063; *Populus tremuloides* M58392; *Poranthera huegelii* AY663613; *Potamogeton perfoliatus* AY952437; *Potentilla fruticosa* U06818; *Pouteria obovata* AF421100; *Boehmeria nivea* AF062005; *Prasophyllum fimbriatum* JQ933453; *Prumnopitys ferruginoides* AF249659; *Prunus campanulata* AF411501; *Pseudopanax laetevirens* AF307932; *Pseudosasa amabilis* AJ746273; *Pseudotsuga menziesii* AY664856; *Pseudowintera axillaris* AY572266; *Psidium cattleianum* GU135194; *Psoralea aculeata* AM235013; *Psychrophila novae-zealandiae* AF307907; *Pterostylis nutans* AF074224; *Puccinellia distans* L14621; *Pyraecantha coccinea* HM850304; *Pyr-rhanthera exigua* AY691638; *Quintinia verdonii* AF299092; *Ranunculus macranthus* DQ069502; *Raoulia subsericea* JQ933461; *Raukua simplex* FJ470122; *Rhabdothamnus solandri* JQ933464; *Rhagodia drummondii* AY270124; *Rhamnus lycioides* AJ390070; *Rhododendron simsii* GQ997829; *Rhopalostylis baueri* AJ404808; *Ribes aureum* L11204; *Ricinus communis* AY794915; *Ripogonum elseyanum* Z77309; *Robinia pseudoacacia* U74220; *Roldana petasitis* HM850309; *Rorippa sylvestris* AF020328; *Rosa woodsii* U06824; *Rostkovia magellanica* AJ419947; *Rubus idaeus* U06825; *Rumex obtusifolius* AF297126; *Ruppia maritima* U03729; *Rytidosperma maculatum* EU400673; *Salix fragilis* AJ418841; *Sambucus caerulea* AJ420867; *Samolus repens* AF421102; *Sarcocornia utahensis* AY270126; *Scaevola aemula* EU017199; *Schefflera elegantissima* DQ133821; *Schizeilema nitens* DQ133822; *Schoenoplectus mucronatus* EF178572; *Schoenus nigricans* Y12983; *Scleranthus annuus* AY270145; *Scutellaria bolanderi* L01954; *Sebaea* sp. AM234984; *Sedum rubrotinctum* L01956; *Selliera radicans* X87395; *Senecio burchellii* AM234911; *Senna alata* U74250; *Setaria palmifolia* AM849389; *Sicyos angulatus* DQ535847; *Simplicia laxa* AY691641; *Solanum tuberosum* M76402; *Sonchus wightianus* subsp. *wallichianus* JQ933486; *Sophora microphylla* AY725480; *Sorbaria arborea* U06826; *Sorbus scopulina* U06827; *Sparganium eurycarpum* AY465696; *Spartina anglica* AM849382; *Spinifex littoreus* AM849340; *Spiraea x vanhouttei* L11206; *Spiranthes cernua* AJ542435; *Sporadanthus tasmanicus* AF148793; *Stackhousia minima* AJ235795; *Stellaria media* AF206823; *Stenostachys laevis* AY691640; *Stenotaphrum secundatum* AM235074; *Stilbocarpa polaris* DQ133823; *Streblus pendulinus* AF500353; *Stuckenia pectinata* AB196953; *Suaeda altissima* AY270135; *Syzygium* sp. FJ976174; *Taraxacum officinale* AY395562; *Tecomanthe venusta* JQ933499; *Tecomaria capensis* FJ870009; *Tetrachondra hamiltonii* U28885; *Tetragonia tetragonioides* AF132094; *Tetraria crinifolia* DQ058348; *Teucrium parvifolium* U78715; *Thelymitra* sp. AF074232; *Thismia rodwayi* AY939892; *Thymus vulgaris* Z37472; *Trachycarpus fortunei* AY012460; *Tradescantia pallida* AM110254; *Triglochin bulbosa* AM234996; *Trisetum youngii* AY691646; *Trithuria submersa* DQ915188; *Tropaeolum majus* L14706; *Tupeia antarctica* DQ790133; *Tussilago farfara* JQ933515; *Typha latifolia* DQ069503; *Ulmus alata* U00441; *Uncinia nemoralis* AY725956; *Urochloa maxima* AM849390; *Urtica dioica* AF500361; *Utricularia biflora* L13190; *Vaccinium macrocarpon* L12625; *Vinca minor* AJ419768; *Viola soraria* L11674; *Vitex agnus-castus* U78716; *Vitis vinifera* AJ635355; *Vittadinia triloba* JQ933521; *Wahlenbergia gloriosa* AY655161; *Watsonia angusta* AJ309666; *Weinmannia racemosa* AF307933; *Wisteria sinensis* Z95544; *Wolffia arrhiza* AY034254; *Xeronema callistemon* Z69235; *Zannichellia palustris* U03725; *Zantedeschia aethiopica* AF065474; *Zizania texana* L05043; *Zostera capricorni* AY077963; *Zotovia thomsonii* AY691644; *Zoysia japonica* AM849385.

Table S23. Taxa included in the phylogenetic analysis for genera of the flora of the Cape of South Africa based on *rbcl* plastid sequences

GenBank accession numbers are given for each taxon.

Abutilon sp. AM235023; Acacia karoo AM235003; Acaena sp. AM235106; Acalypha sp. AM234975; Acharia tragodes AJ418795; Achyranthes aspera AY270048; Acmadenia rupicola AM235114; Acokanthera oppositifolia AM234828; Acrosanthes teritifolia AM234785; Adenandra uniflora AF066803; Adenocline violifolia AY794870; Adenogramma lichtensteinia AM235030; Adromischus sp. AM234968; Agapanthus africanus Z69221; Agathosma ovata AM235115; Agrostis capillaris AY395527; Alchemilla mollis U06792; Alectra sessiliflora AF026820; Allium dregeanum AM234798; Allophylus sp. AM235128; Aloe humilis AY323642; Alonsoa unilabiata AF026821; Amaryllis belladonna Z69219; Amellus sp. AM234845; Ammocharis longifolia AM234803; Ammophila breviflora AJ784835; Amphiglossa tomentosa AM234846; Amphithalea micrantha AM235004; Anacampteros papyracea AM235079; Anagallis arvensis M88343; Anaxeton arborens AM234847; Anchusa capensis AM234924; Andrachne arida AY663563; Androcymbium orienticapense AM234961; Andropogon gerardii AJ784818; Anemone tenuifolia AM235090; Anginon rugosum U50222; Angraecum sesquipedale AF074106; Anisodonteia triloba AM235024; Anisotoma cordifolia AM234829; Annesorhiza altiscapa AM234812; Anthochortus graminifolius AM235091; Anthospermum herbaceum X83623; Anthoxanthum sp. AM235051; Antizoma angustifolia DQ099437; Apodolirion lanceolatum AM234804; Apodytes dimidiata AJ428895; Aponogeton distachyos U80684; Aptosimum sp. AF123671; Arctopus echinatus AY188414; Arctotheca calendula AM234848; Arctotis hirsuta EU384947; Argryrobium harveyanum Z95546; Aristeia glauca Z77282; Aristida congesta subsp. barbicallis U31359; Artemisia afra AM234849; Arundinella deppeana AM849417; Asaemia inermis AM234850; Asclepias curassavica X91774; Askidiosperma andreeanum AM235092; Aspalathus cephalotes Z70132; Asparagus capensis AM234843; Aspidoglossum heterophyllum AM234830; Astephanus marginatus AM234831; Aster bakeranus AM234851; Astroloba foliosa Z73683; Atalaya alata AY724345; Athanasia trifurcata AM234852; Athrixia sp. AM234853; Atriplex patula X15925; Audouinia capitata AY490992; Augea capensis Y15015; Aulax cancellata AM235081; Azima tetraantha U36782; Babiana ecklonii AJ309673; Ballota africana AM234997; Barleria prionitis L01886; Bartholina burmanniana AM235035; Bartsia alpina AF190903; Bassia diffusa AM234799; Behnia reticulata Z69226; Bergia glomerata AM234974; Berkheya rigida AM234854; Berula erecta AM234813; Berzelia lanuginosa L14391; Bobartia gladiata AJ309699; Bolboschoenus maritimus Y12996; Bolusafra bituminosa EU1717272; Bonatea speciosa AM235036; Boophoe disticha AF116945; Bowiea volubilis Z69237; Brabejum stellatifolium U91966; Brachiaria sp. AM235052; Brachycorythos sp. AM235037; Brachylaena nerifolia AM234855; Brachypodium sylvaticum AJ746258; Brachysiphon microphyllum AJ605086; Brachystelma luteum AM234832; Bromus hordeaceus AY395531; Brownleea caerulea AM235038; Brunia albiflora Y10674; Brunsvigia orientalis AM234805; Bryomorpha aretioides AM234856; Buchnera floridana AF026822; Buddleja davidii AJ001757; Bulbine succulenta Z73684; Bulbinella caudafelis Z73685; Bullostylis atrosanguine Y12992; Bupleurum falcatum U50224; Burchellia bubalina Z68833; Cadaba aphylla AM234931; Caesia concorta Z77297; Calanthe vestita AF074117; Calodendrum capense AF066805; Calopsis paniculata AM235093; Calpurnia intrusa AM235005; Calystegia sepium AY100992; Canthium inerme AM235109; Capelio tubularis AM234857; Capnophyllum africanum AM234814; Capparis hastata M95754; Cardamine pensylvanica AF020324; Carex conferta Y12999; Carissa bispinosa AJ419738; Carpacoce sp. AJ288597; Carpanthea pomeridiana AM234786; Carpha sp. AM234971; Carpoprotus edulis AM234787; Cassine piragua AM234952; Cassinopsis ilicifolia AJ428896; Celtis philippensis AY263941; Cenchrus setigerus L14622; Centella asiatica D44559; Cerastium capense AM234949; Ceratiosicyos laevis AM234784; Ceratophyllum demersum D89473; Ceropegia woodii X91775; Chaetacanthus sp. AM234779; Chaetachme aristata D86310; Chaetobromus drageanus AM235053; Chamaecrista fasciculata U74187; Chamerion angustifolium L10217; Chamira circaeoides AM234932; Chascanum cernuum AM235164; Chasmanthe aethiopica AJ309660; Chionanthes virginicus DQ006108; Chironia baccifera AM234982; Chloris virgata EF125096; Chlorophytum comosum L05031; Chondropetalum sp. AM235094; Chrysanthemoides monilifera AM234858; Chrysitrix capensis AJ419938; Chrysocoma sp. AM234859; Cineraria sp. AM234860; Cissampelos capensis AM235029; Citrullus lanatus DQ535745; Cladium jamaicense Y12988; Cladoraphis spinosa AM235054; Clausena anisata AM235116; Clematis sp. AF193972; Cleretum papulosum subsp. papulosum AM234788; Cliffortia sp. AM235107; Clivia mirabilis AM234806; Clutia pulchella AM234976; Coccinia adoensis AF534745; Codon royerii AM234925; Coleonema pulchellum L12567; Commelina sp. AM234965; Conium sp. AM234815; Convolvulus sagittatus AY100994; Conyza scabrata AM234861; Cortaderia seloana DQ005609; Corycium carnosum AY381115; Corymbium glabrum AM234862; Costularia natalensis DQ058345; Cotyledon orbiculata AM234969; Crassula perforata AF274594; Crinum yemense AF116951; Crocosmia mathewsiana AJ577250; Cromidon sp. AM235133; Crotalaria capensis Z70133; Cryptocarya obovata L28950; Cullumia bisulca AM234863; Cunonia atrorubens AF291918; Curtisia dentata L11222; Cussonia spicata U50242; Cyanella hyacinthoides Z77312; Cyanotis sp. AM234966; Cyathocoma hexandra DQ058344; Cyclopa genistoides Z70124; Cyncium racemosum AF026826; Cymbopogon citratus EF125117; Cynanchum laeve DQ006054; Cynodon sp. AM235055; Cynoglossum sp. AM234926; Cynosurus cristatus EF125151; Cyperus laevigatus Y13017; Cyphia bulbosa AM234938; Cyphostemma juttae AJ419719; Cyrtanthus elatus AF116953; Cysticapnos sp. AM234980; Dalechampia spathulata AY788172; Dasispermum suffruticosum AM234816; Delosperma echinatum AJ235778; Desmazeria rigida EF125150; Deverra denudata AM234817; Dianthus namaensis AM234950; Diascia longicornis AM235134; Diastella parilis AM235082; Dichondra occidentalis AY101023; Diclis reptans AM235135; Dicoma picta AM234864; Didelta spinosa AM234865; Didymodoxa caffra AM235160; Dierama sp. AM234992; Diets robinsoniana AJ309695; Digitaria sp. AM235056; Dilatris pillansii AM234986; Dimorphotheca pluvialis L13636; Dioscorea elephantipes AF307461; Diosma sabulosa AM235117; Diospyros whyteana Z83134; Dipogon lignosus AB045800; Disa tripetaloides AF074151; Dischisma ciliata AM235136; Disparago anomala AM234866; Disperis capensis AY381120; Disphyma crassifolium AM234789; Dodonaea angustifolia AM235129; Dolichos decumbens AM235006; Dolichoeris ericoides AM234867; Dovea macrocarpa AM235095; Dovyalis rhamnoides Z75677; Dracaena sp. AM235113; Drimia elata AM234987; Droguetia ambigua AM235161; Drosanthemum hispidum AM234790; Drosera capensis L01909; Dumasia villosa AF181933; Echinochloa crus-galli AM887871; Echiostachys incanus AM234927; Edmondia sp. AM234868; Ehretia anacua AJ247617; Ehrharta calycina AM235057; Ekebergia capensis AJ402947; Elaeodendron transvaalense AM234953; Elegia cuspidata AF148774; Eleocharis atropurpurea Y13012; Eleusine indica EF125108; Elytropappus rhinocerotis AM234869; Emex spinosa AF297142; Empleuridium juniperinum AY935725; Empleurum unicapulare AM235118; Empodium veratrifolium Y14987; Endonema retzioides AJ605088; Enneasperm scaber U31103; Epilobium rigidum AF495763; Epischoenus quadrangularis DQ058349; Eragrostis capensis U31104; Erica australis L12617; Eriosema squarrosum AM235007; Eriosperrum bayeri Z77277; Erythrina crista-galli Z70170; Euchaetis albertiniana AM235119; Euclea natalensis Z80186; Eucomis regia AM234988; Eulalia aurea AM849410; Eulophia streptotepala AM235039; Euphorbia silenifolia AM234977; Euryops speciosissimus AM234870; Eustachys paspaloides AM235058; Eustegia minuta AM234833; Euthystachys abbreviata Z29671; Excoecaria cochinchinensis AJ418809; Exomis microphylla AM234800; Ezoscadium capense AM234818; Falcia repens AY101024; Faurea saligna EU676072; Felicia bergerana L13639; Ferraria crispa AJ309690; Festuca rubra AJ746261; Ficinia pinguin AJ404703; Ficus cordata AM235033; Fimbristylis dichotoma Y13008; Fingerhuthia africana AM235059; Flueggea virosa subsp. virosa AY663585; Fockea capensis AM234834; Forsskaolea sp. AM235162; Foveolina tenella AM234871; Frankenia pulverulenta Z97638; Freesia alba Z77284; Freylinia undulata AM235137; Fuirena ciliaris Y12971; Galenia pubescens AF132099; Galium corsicum X81096; Galopina circaeoides AJ288602; Gardenia thunbergia X83637; Garuleum bipinnatum AM234872; Gasteria glomerata AJ512281; Gazania splendens L13638; Geissoloma marginatum AJ403022; Geissorhiza heterostyla AJ309676; Geranium ocellatum L14698; Gerbera jamesonii L13643; Gibbaria ilicifolia AM234873; Gladiolus guenzii Z77286; Glischrocolla formosa AM235046; Gloveria integrifolia AM234954; Gnaphalium sp. AM234874; Gnidia racemosa AJ295268; Gomphocarpus cancellatus AM234835; Gomphostigma sp. AM235138; Gonioma kamassi AM234836; Gorteria diffusa AM234875; Graderia scabra AM235043; Grammatotheca bergiana DQ356116; Grewia occidentalis AJ233152; Grielum humifusum AJ403023; Grubbia tomentosa Z83141; Gunnera perpensa AY008154; Gymnodiscus capillaris AM234876; Gymnosporia buxifolia AM234955; Habeneria falcicornis AM235040; Haemanthus humilis AF116960; Hakea archaeoides EU676114; Halleria lucida AF026828; Haloplepis amplexicaulis AY270095; Halophila ovalis AB004890; Harpochloa flax AM235060; Harveya capensis AF026829; Haworthia arachnoidea AM234844; Hebenstretia dentata AJ001767; Heeria argentea AM234809; Helichrysum cymosum AM234877; Helictotrichon requienii EF125144; Heliophila pubescens AM234933; Heliotropium arborenses L14399; Hellmutia membranacea Y13000; Hemarthis altissima GU135209; Hemimeris sabulosa AF123668; Hermannia sp. AM235025; Hermas villosa AM234819; Herniaria glabra AF132091; Hertia sp. AM234878; Hesperantha pseudopilosa AJ309656; Heterolepis aliena AM234879; Heteromorpha sp. AM234820; Heteropogon contortus AM235061; Hibiscus punaluuensis AJ233121; Hippia frutescens AM234880; Holcus lanatus AM235062; Holothrix aspera AM235041; Hoplophyllum spinosa AM234881; Hordeum marinum subsp. marinum AY137436; Hyaenanche globosa AJ402961; Hybanthus enneasperm AF530902; Hydrocotyle verticillata U50236; Hydrophylax maritima AJ616212; Hymenolepis gnidioides AM234882; Hyobanche atropurpurea AF026831; Hyparrhenia hirta U31436; Hypericum perforatum AF206779; Hypertelis salsoloides AF132097; Hypocalyptus sophoroides AF308710; Hypodiscus sp. AM235096; Hypoestes forskalii L12593;

Hypoxis leptocarpa Z73702; *Iflora verticillata* AM234883; *Ilex mitis* X98730; *Impatiens repens* Z80197; *Imperata cylindrica* GU135272; *Indigofera glomerata* AM235008; *Ipomoea purpurea* X60663; *Ischyrolepis subverticillata* AM235097; *Isoglossa cooperi* AM234780; *Isolepis cernua* Y13014; *Itasina filifolia* AM234821; *Ixia latifolia* Z77288; *Ixianthes retzioides* AM235154; *Jamesbrittenia foliosa* AM235139; *Jasminum suavisimum* L01929; *Jatropha capensis* AM234978; *Jordaniella dubia* AM234791; *Juncus effusus* L12681; *Justicia odorata* L01930; *Kalanchoe daigremontiana* L11189; *Karroochloa purpurea* U31437; *Kedrostis africana* AJ235782; *Kiggelaria africana* AF206786; *Klattia flava* AJ309667; *Kniphofia uvaria* Z73689; *Koeleria* sp. AM235063; *Kogelbergia verticillata* AM235155; *Kyllinga appendiculata* Y13007; *Lachenalia orchioides* AM234989; *Lachnaea filicaulis* AJ297221; *Lachnospermum fascicularis* AM234884; *Lachnostylis bilocularis* AJ418813; *Lagarosiphon muscoides* U80702; *Lagenaria siceraria* DQ535825; *Lampranthus filicaulis* AM234792; *Lanaria lanata* Z77313; *Lapeirousia neglecta* AJ309665; *Laportea canadensis* AF500356; *Lappula deflexa* EU599846; *Lasiopermum bipinnatum* AM234885; *Lauridia tetragonia* AM234956; *Laurophyllum capensis* AM234810; *Lavatera acerifolia* AJ233122; *Lebeckia simsiana* AM235009; *Leдебouria socialis* L05038; *Leersia oryzoides* U13228; *Leodesia procumbens* AM234979; *Lemna minuta* M91630; *Leonotis leonurus* AM234998; *Lepidium africanum* AM234934; *Lessertia frutescens* AM235010; *Leucadendron laureolum* U79180; *Leucas capense* AM234999; *Leucospermum bolusii* AM235083; *Leysera gnaphaloides* AM234886; *Lichtensteinia lacera* AM234822; *Lidbeckia pectinata* AM234887; *Limeum aethiopicum* AF132095; *Limonium scabrum* AM235050; *Lincoxia alopecuroides* AY490993; *Linum arboreum* AY380352; *Liparia splendens* Z70125; *Liparis lillifolia* AF074183; *Lithops* sp. M97889; *Lithospermum* sp. AM234928; *Lobelia erinus* L13930; *Lobostemon fruticosus* AM234929; *Lolium perenne* subsp. *perenne* AJ746293; *Lonchostoma monogynum* AY490982; *Lotononis alpina* AM235011; *Ludwigia peploides* L10222; *Lycium ferocissimum* AM235152; *Lyperia tristis* AM235140; *Lysimachia congestiflora* AF213820; *Lythrum salicaria* AF495760; *Macleodium spinosum* AM234888; *Macrostylis ramulosa* AM235120; *Maerua kirkii* AY483266; *Mairia hirsuta* AM234889; *Manochlamys albicans* AM234801; *Manulea* sp. AM235141; *Marasmodes* sp. AM234890; *Mastersiella digitata* AM234972; *Mauroecnia frangula* AM234957; *Maytenis senegalensis* AY380353; *Melasma scabrum* AF190904; *Melaspheerula ramosa* AM234993; *Melianthus major* AM235028; *Melica uniflora* AJ746294; *Melinis repens* AM235064; *Melolobium obcordatum* Z95540; *Menodora spinescens* DQ673299; *Mentha longifolia* Z37415; *Merciera brevifolia* AM234939; *Merxmüllera* sp. AM235065; *Mesembryanthemum crystallinum* M98515; *Metalasia densa* AM234891; *Metrosideros angustifolia* AM235034; *Micranthus junceus* AJ309662; *Microcodon glomeratum* AM234940; *Microdon orbicularis* AM235142; *Microloa tenuifolium* AM234837; *Microstegium japonicum* AB125343; *Mimetes pauciflorus* AM235084; *Miscanthus capensis* AM235066; *Mniothamnea bullata* AY490983; *Mollugo verticillata* M62566; *Monechma spartioides* AM234781; *Monerma cylindrica* EF125153; *Monopsis debilis* AM234941; *Monsonia emarginata* L14701; *Montinia caryophyllacea* L11194; *Moquiniella rubra* AM235021; *Moraea villosa* AJ307156; *Morella californica* AJ626763; *Muralia heisteria* AJ829698; *Myosotis discolor* AY395552; *Myriophyllum exalbescens* L11195; *Myrsine africana* U96652; *Mystrolyon aethiopicum* AM234958; *Najas marina* U80705; *Nassella trichotoma* EF125159; *Nebelia fragarioides* AY490985; *Neesenbeckia punctata* AY725952; *Nemesia strumosa* AF123663; *Nenax microphylla* AM235110; *Nerine* sp. AM234807; *Nicotiana acuminata* M16896; *Nivenia corymbosa* Z77289; *Noltea africana* AJ390054; *Nuxia floribunda* AM235156; *Nymanina capensis* U39084; *Nymphaea odorata* M77034; *Nymphoides peltata* X87392; *Ochna serrulata* Z75273; *Ocotea bullata* AM235002; *Oedera capensis* AM234892; *Ottia africana* AM235143; *Oldenburgia grandis* AM234893; *Oldenlandia goreaensis* Z68808; *Olea europaea* AJ001766; *Oligomeris linifolia* AY483272; *Olinia ventosa* AF215546; *Oncinena lineare* AM234838; *Oncosiphon suffruticosum* AM234894; *Onixotis* sp. AM234962; *Oplismenus* sp. AM235067; *Oreoleyera montana* AM234895; *Ornithogalum longibracteatum* AM902312; *Ornithoglossum viride* AM234963; *Orothamnus zeyheri* U37132; *Orphium frutescens* AM234983; *Osmitopsis asterisoides* AM234896; *Osteospermum jucundum* AM234897; *Osyris compressa* AM235123; *Otholobium sericeum* U74219; *Othonna coronopifolia* AM234898; *Oxalis pes-caprae* AM235044; *Pachypodium rosulatum* AM234839; *Panicum* sp. AM235068; *Papaver* sp. AM235045; *Pappea capensis* AM235130; *Paranomus dispersus* AM235085; *Parapholis incurva* EF125154; *Paraserianthes lophantha* Z70148; *Paronychia canadensis* DQ006082; *Paspalum dilatatum* AM849371; *Passerina falcifolia* AJ297224; *Pauridia longituba* Y14991; *Pavonia* sp. AM235026; *Pelargonium exstipulatum* L14704; *Peliostomum virgatum* AM235144; *Penaea mucronata* U26331; *Pennisetum glaucum* L14623; *Pentameris thurii* DQ887119; *Pentastichis airoides* AM235069; *Pentzia incana* AM234899; *Peperomia* sp. L12661; *Peristrophe cernua* AM234782; *Petalacte coronata* AM234900; *Peucedanum galbanum* AM234823; *Phalaris arundinacea* AJ784827; *Phaneroglossa bolusii* AY215161; *Pharnameum* sp. AM235031; *Phragmites australis* U29900; *Phylla pubescens* Y16769; *Phyllanthus liebmannianus* Z75676; *Phyllocladus splendens* AM234793; *Phyllopodium* sp. AM235145; *Phymaspermum appressum* AM234901; *Pillansia templemanni* AJ309671; *Pimpinella saxifraga* U50229; *Piper capense* AM235048; *Pittosporum japonicum* L11202; *Plantago crassifolia* AM235049; *Platycarpha carlinoides* EU385009; *Platycaulos major* AY881465; *Platylophus trifoliatus* AF291933; *Plectostachys serpyllifolia* AM234902; *Plectranthus barbatus* U28882; *Plumbago auriculata* Y16906; *Poa trivialis* AY395555; *Podalyria biflora* Z70126; *Polemanniopsis marlothii* AM234824; *Polhillia pallens* AM235012; *Polyarrhena reflexa* AM234903; *Polycarena* sp. AM235146; *Polycarpon tetraphyllum* AY270144; *Polygala bracteolata* AJ829702; *Polygonum undulatum* AM235078; *Polygoum* sp. AM235070; *Polystachya pubescens* AF074222; *Portulacaria afra* AM235080; *Potamogeton distinctus* AB004901; *Printzia* sp. AM234904; *Prionanthium dentatum* DQ887121; *Prionium serratum* U49223; *Prismatocarpus schlechteri* AM234942; *Protea repens* U79182; *Prunus africana* AM235108; *Pseudobaeckia cordata* AM234935; *Pseudopentameris macrantha* DQ887122; *Pseudoselago* sp. AM235147; *Psilocaulon parviflorum* AM234794; *Psoralea aculeata* AM235013; *Psychotria nervosa* AJ002186; *Psydrax obovatum* AM235111; *Ptaeroxylon obliquum* AF123276; *Pteronia divaricata* AM234905; *Pterygodium catholicum* AY368346; *Puccinellia distans* L14621; *Pulicaria scabra* AM234906; *Pupalia lappacea* AY270122; *Putterlickia pyracantha* AM234959; *Pycreus mundtii* AF449517; *Pyrenacantha malvifolia* AJ402995; *Quaqua mammillaris* AM234840; *Rafnia perfoliata* AM235014; *Ranunculus trichophyllus* L08766; *Rapanea ferruginea* Z80204; *Raspalia virgata* AM234936; *Relhania rotundifolia* AM234907; *Restio dispar* AM235099; *Retzia capensis* Z29669; *Rhamnus prinoidea* AM235104; *Rhigiophyllum squarrosum* AM234943; *Rhizogoum obovatum* AM234922; *Rhodocoma capensis* AM235100; *Rhoiacarpus capensis* AM235124; *Rhoicissus tomentosa* AJ419725; *Rhus lucida* AM234811; *Rhynchosidium* sp. AM234908; *Rhynchosia capensis* AM235015; *Rhynchospora fascicularis* U49233; *Riocreuxia torulosa* AM234841; *Robsonodendron maritimum* AM234960; *Roella amplexicaulis* AM234944; *Romulea monodelpha* AJ133871; *Roridula gorgonias* L01950; *Rosenia humilis* AM234909; *Rothmannia capensis* AM235112; *Rubia tinctorum* X83666; *Rubus idaeus* U06825; *Ruellia graezicans* L12595; *Rumex acetosella* D86290; *Ruppia maritima* U03729; *Ruschia brakdamensis* AM234795; *Salicornia mayeriana* AM234802; *Salix mucronata* AM235121; *Salsola kali* AY270129; *Saltera sarcocolla* AM235047; *Salvia dentata* AM235000; *Samolus valerandi* U96659; *Sanicula elata* AM234825; *Sansevieria cylindrica* Z73698; *Saphesia flaccida* AM234796; *Sarcocornia utahensis* AY270126; *Sarcostemma viminalis* EU196289; *Satyrium rhynchanthum* AJ542397; *Scabiosa columbaria* AF446948; *Scadoxus puniceus* AM234808; *Scaevola frutescens* L13932; *Schefflera arboricola* U50255; *Schismus barbatus* AM235071; *Schistostephium umbellata* AM234910; *Schoenoplectus articulatus* Y12987; *Schoenoxiphium lehmannii* EF178542; *Schoenus nigricans* Y12983; *Schotia afra* AM235016; *Scirpoides thunbergii* AJ404727; *Scleranthus annuus* AY270145; *Scleria distans* Y12968; *Scolopia mundii* AM235122; *Scutia buxifolia* AJ390033; *Sebaea* sp. AM234984; *Secamone afzelii* X91779; *Seetzenia lanata* Y15025; *Seidelia triandra* AY794933; *Selago* sp. AM235148; *Senecio burchellii* AM234911; *Septulina glauca* AM235022; *Serruria fasciflora* AM235086; *Sesbania punicea* GU135148; *Setaria* sp. AM235072; *Sida* sp. AM235027; *Sideroxylon inerme* AM234951; *Silene* sp. AM234951; *Siphocodon debilis* AM234945; *Sisymbrium irio* AY167982; *Smelophyllum capense* AM235131; *Solanum* sp. AM235153; *Sonderothamnus petraeus* AY078154; *Sorocephalus alopecurus* AM235087; *Sparaxis variegata* AJ309669; *Sparmannia ricinocarpa* AJ233128; *Spartina pectinata* AJ784821; *Spatalla curvifolia* AM235088; *Spergula rubra* AY270146; *Spetaea lachenalifolia* AM234990; *Spiloxene capensis* Z77281; *Spirodela intermedia* U68092; *Sporobolus* sp. AM235073; *Staavia radiata* AM234937; *Staberoha* sp. AM235101; *Stachys aethiopia* AM235001; *Stapelia leendertiae* X91778; *Steiroidiscus* sp. AM234912; *Stellaria media* M62570; *Stenoglossum woodii* AM235042; *Stenotaphrum secundatum* AM235074; *Sterculia tragacantha* AF022126; *Stilbe vestita* Z68827; *Stilpnogyne* sp. AM234913; *Stipa dregeana* U31442; *Stipagrostis zeyheri* U31378; *Stirtonanthus taylorianus* AM235017; *Stoebe* sp. AM234914; *Stoibrax capense* AM234826; *Strelitzia reginae* AM235157; *Streptocarpus rexii* AM234985; *Striga gesnerioides* AF026839; *Struthiola ciliata* AJ297241; *Strychnos decussata* AM235020; *Stylapteris micranthus* AJ605093; *Suaeda altissima* AY270135; *Suessenguthiella scleranthoides* AM235032; *Sutera pinnatifida* AM235149; *Syncarpha ferruginea* AM234915; *Syringodea derustensis* AM234994; *Tamarix pentandra* Z97650; *Tarchonanthus camphoratus* AM234916; *Tecoma capensis* AM234923; *Tecomaria capensis* AM235150; *Teedia lucida* AM234923; *Tephrosia grandiflora* Z95542; *Tetragonia* sp. AM234797; *Tetralia involucreta* AM234973; *Teucrium fruticosum* Z37467; *Thamnea massoniana* AY490990; *Thamnochortus anenarius* AM235102; *Thereianthus racemosus* AJ309663; *Thesidium fragile* AM235125; *Thesium strictum* AM235126; *Thinopyrum distichum* AM235075; *Thunbergia capensis* AM234783; *Tittmannia esterhuysenae* AY490991; *Torilis arvensis* AM234827; *Trachyandra tortilis* AJ512327; *Trachypogon spicatus* EF125123; *Tragus racemosus* EF125103; *Trichelia longibracteata* AM234946; *Tribolium uniolae* AM235076; *Tribulus terrestris* AM235167; *Trichocephalus stipularis* AM235105; *Trichocladus crinitus* AF060711; *Trichodesma africanum* AM234930; *Trichodiadema barbatum* AY046587; *Trichogyne repens* AM234917; *Trifolium burchellii*

num AM235018; *Triglochin bulbosa* AM234996; *Trigonocapnos lichtensteinii* AM234981; *Trimeria grandifolia* AJ418835; *Tripteris clandestina* AM234918; *Tristachya leucothrix* AM235077; *Tritonia disticha* AJ309675; *Tritoniopsis unguicularis* AJ309658; *Troglophyton* sp. AM234919; *Tulbaghia violacea* Z69203; *Tylophora sylvatica* X91780; *Typha capensis* AM235159; *Ursinia* sp. AM234920; *Utricularia biflora* L13190; *Vahlia capensis* L11208; *Valeriana capensis* AM235163; *Vellereophyton dealbatum* AM234921; *Veltheimia bracteata* AM234991; *Vernonia mespilifolia* L13646; *Veronica anagallis-aquatica* AY034021; *Vexatorella obtusata* subsp. *obtusata* AM235089; *Vigna unguiculata* Z95543; *Villarsia calthifolia* L11685; *Viola decumbens* AM235165; *Virgilia divaricata* Z70131; *Viscum capense* AM235127; *Wachendorfia thyrsiflora* AF312266; *Wahlenbergia capensis* AM234947; *Walleria gracilis* AM235158; *Watsonia angusta* AJ309666; *Wiborgia tetraptera* EU347973; *Willdenowia incurvata* AM235103; *Wimmerella pygmaea* AM234948; *Witsenia maura* AJ277880; *Wolffia arrhiza* AY034254; *Wurmbea spicata* AM234964; *Xenoscapa fistulosa* AM234995; *Xiphotheca tecta* AM235019; *Xyris capensis* AJ286563; *Xysmalobium undulatum* AM234842; *Zaluzianskya ovata* AM235151; *Zannichellia palustris* U03725; *Zantedeschia aethiopica* AF065474; *Zanthoxylum monophyllum* U39282; *Zehneria scabra* AM234970; *Zornia cantoniensis* U74235; *Zostera capensis* AM235166; *Zygophyllum spinosum* AJ133871.