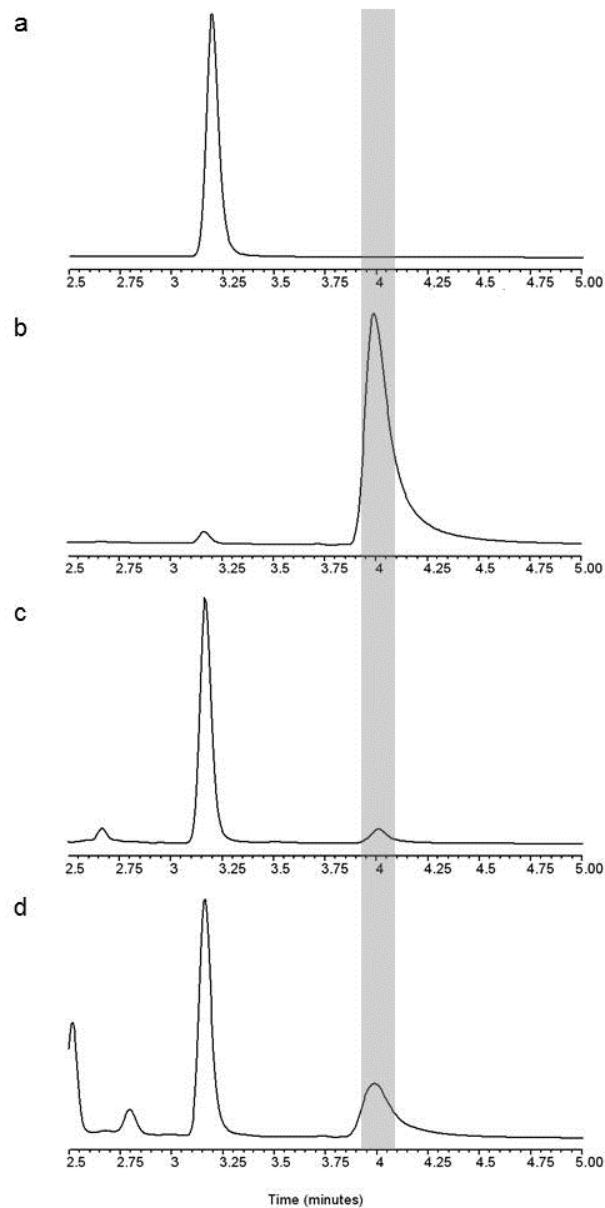


## Supplemental figure I



**Supplemental figure I** | In organs the formation of the azido-dodecanoyl-Lck-FLAG was confirmed via reverse-phase HPLC. Chromatograms of reactions without (a) and with (b) the addition of Nmt1 (0.9  $\mu\text{g/l}$ ) in comparison to reactions obtained with lysates from liver (c) and brain (d). The addition of the recombinant enzyme (b) or lysate from liver or brain (c and d) led to the emergence of a new peak (grey line), which corresponds to azido-dodecanoyl-Lck-FLAG.