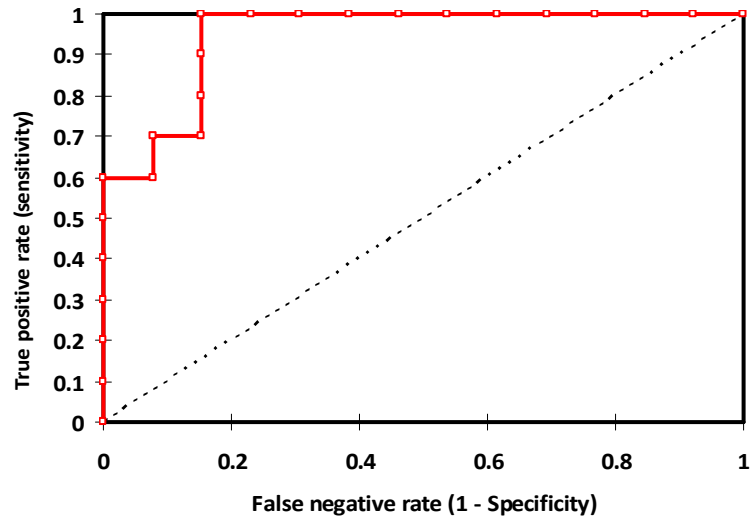
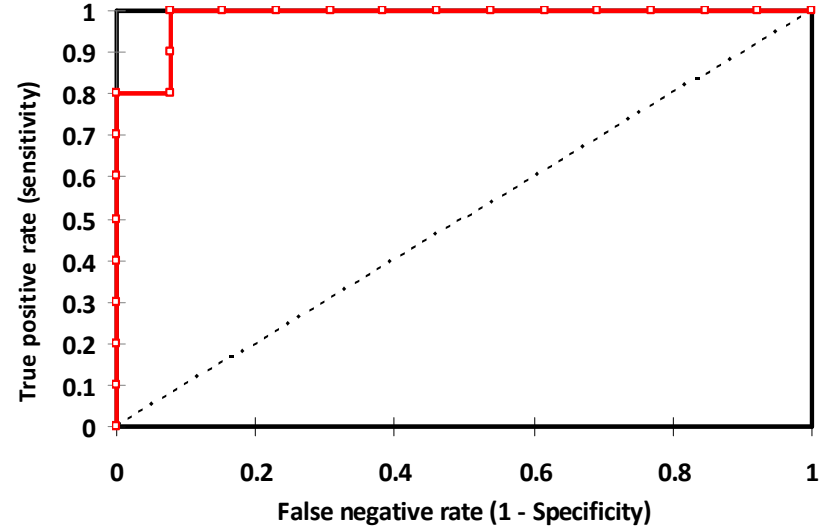


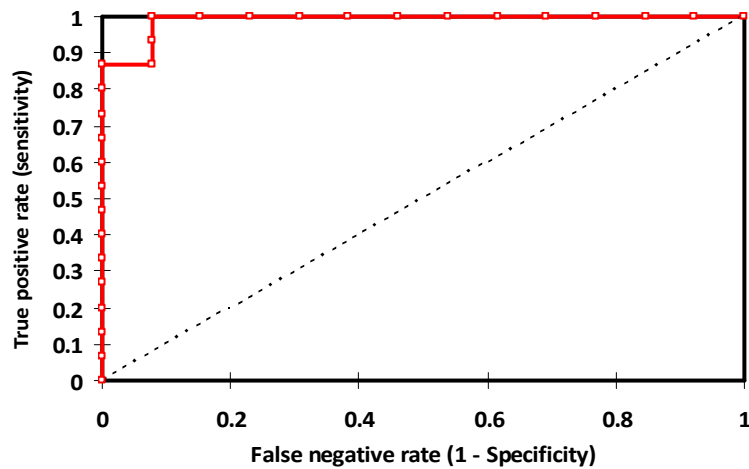
Summary ROC Curve for Gene Signature (MA Analysis/23 patients) AUC=0.946



Summary ROC Curve for Gene Signature (TLDA Analysis/22 patients) AUC=0.985



Summary ROC Curve for Gene Signature (TLDA Analysis/27 patients) AUC=0.990



Summary ROC curve for Gene Signature and HPV status (TLDA Analysis/26 patients) AUC=0.967

