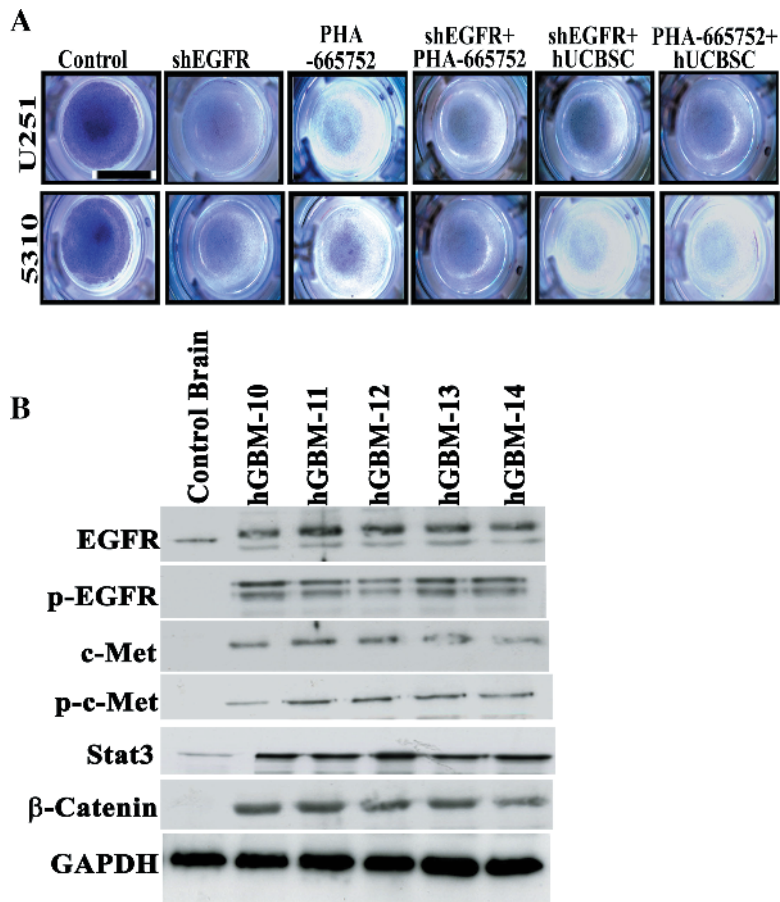


**Figure W1.** Treatment of U251 and 5310 cells with TKIs. (A) U251 and 5310 cells were treated with 5 and 10  $\mu\text{M}$  concentrations of erlotinib and gefitinib for 9 hours. Total RNA was isolated as described in Materials and Methods. Reverse transcription–polymerase chain reaction analysis was done to determine EGFR expression in the TKI treatments. (B and C) FACS analysis demonstrating the increased cell death in both erlotinib and gefitinib treatments at high concentrations (10  $\mu\text{M}$ ).



**Figure W2.** (A) Invading cells were scored by counting four fields per membrane. Control was set to 100, and the percent invaded cells were represented in graphical format. (B) GBM tissue specimen lysates for Western blot analysis were prepared as described previously [28]. *In vivo* expression was studied by loading equal amounts of protein (40  $\mu$ g) from tissue lysates onto 8% to 12% SDS-PAGE gels and probing with desired antibodies.