

Supplemental Data

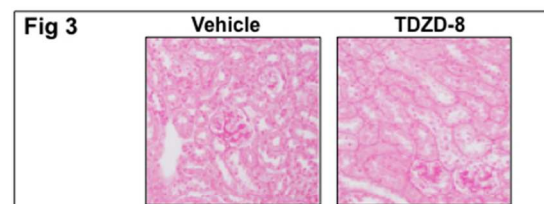
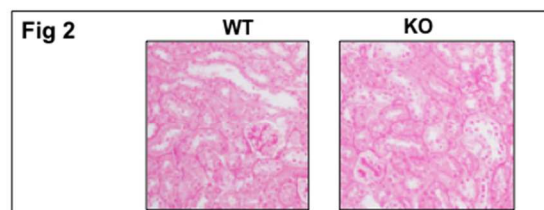
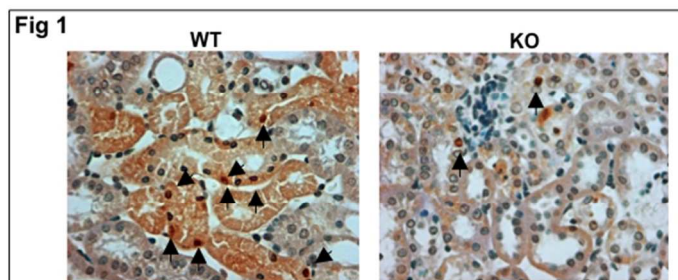


Fig 1 TUNEL staining of mice kidney 24 h after HgCl_2 treatment. Arrows indicate brown staining of TUNEL positive nuclei.

Fig 2 Sirius red staining of WT and KO mice kidney 8 days after HgCl_2 treatment. x200 original magnification.

Fig 3 Sirius red staining of kidneys of WT mice treated with vehicle or TDZD-8, 8 days after HgCl_2 treatment. x200 original magnification.

Supplemental data
60x81mm (300 x 300 DPI)