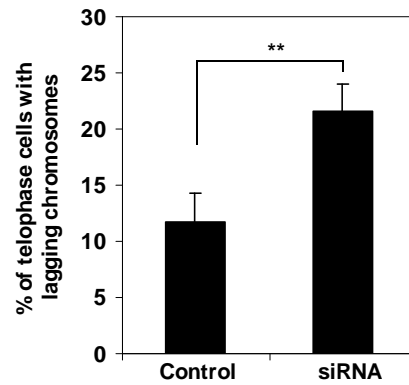
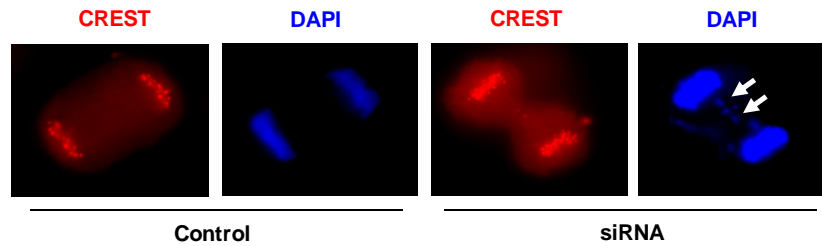


Supplementary Figure 4



**Supplementary Figure 4. Depletion of Shp2 results in lagging chromosomes during unperturbed (without nocodazole treatment) mitosis.** HeLa cells were transfected with control or Shp2 siRNA. Forty-eight hours following transfection cells were stained with CREST antibody and counterstained with DAPI. Lagging chromosomes in a Shp2 knock down telophase cell are pointed with arrows (upper panel). Telophase cells showing lagging chromosomes were quantified (lower panel). At least 100 cells were examined in each experiment. The data shown are mean $\pm$ S.D. of three independent experiments.