

HP35 Fast Dynamics for Folded and Urea-unfolded Conditions

Jean K. Chung, Megan C. Thielges[#], Stephen R. Lynch, Michael D. Fayer^{*}
Department of Chemistry, Stanford University, Stanford, CA 94305
^{*}fayer@stanford.edu

Supporting Information

2D NMR Spectra

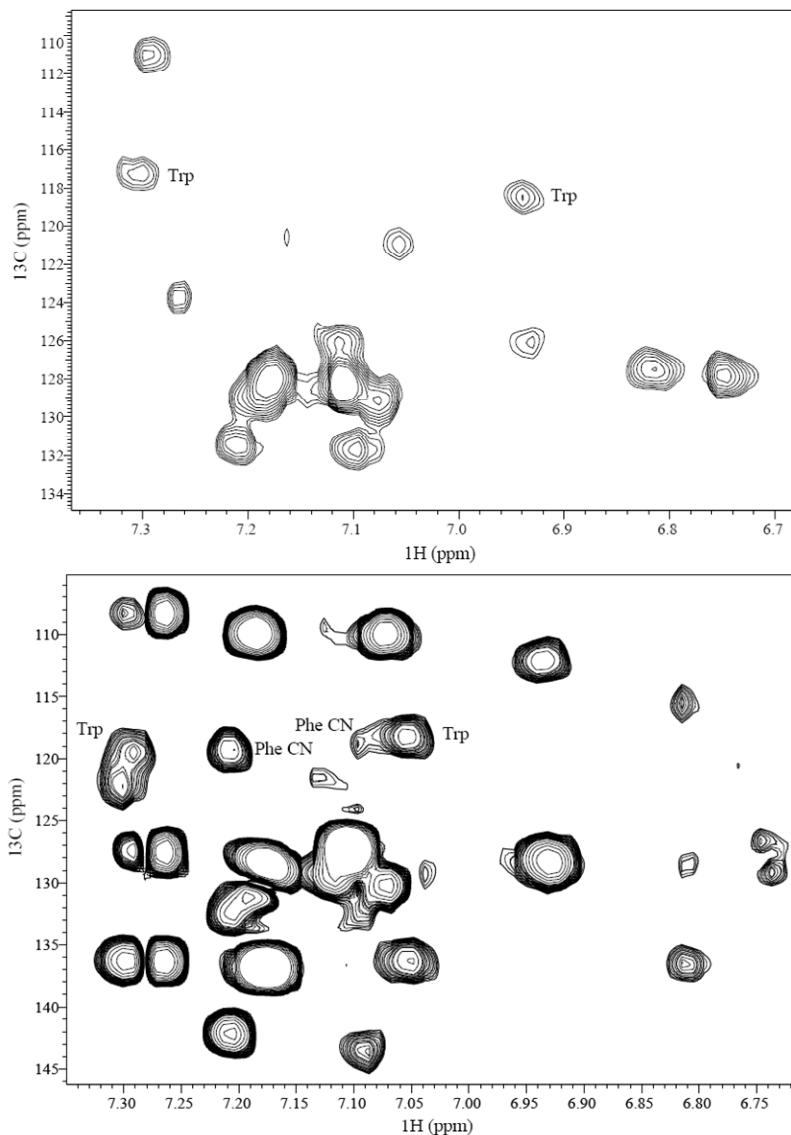


Figure S1 $^1\text{H}/^{13}\text{C}$ HSQC (top) and HMBC (bottom) NMR spectra of HP35- P_2 . The peaks at 118.0 and 118.3 ppm are not apparent in the HSQC, which means that the resonances are not directly attached to ^1H . At the same time, they correlate to ^1H in the HMBC from Phe and not

Trp. These observations indicate that the peaks are those of Phe-attached CN. HSQC spectrum was acquired with 1 scan of 2048 points in t_2 and 100 points in t_1 with an acquisition time of 0.17 s and a recycle delay of 1.5 s. HMBC spectrum was acquired with 32 scans of 2048 points in t_2 and 180 points in t_1 with an acquisition time of 0.17 s and recycle delay of 2 s.

1D ^{13}C (ppm)	HSQC (ppm)	HMBC (ppm)	Assignment	Linewidth (Hz)	T2* (ms)
107.2	-	107.4	W	3.7	86
108.9	-	108.9	F _{CN}	3.5	90
108.9	-	108.9	F _{CN}	3.5	90
111.1	111.3	111.1			
112.0					
114.3		114.6	F (terminal)	0.5	630
116.7				0.4	800
117.3	117.1	117.1	W	20	16
118.0		117.7	CN	9	35
118.3		118.3	CN	13	24
118.6	118.5	118.6	W	23	14

Table S1 Peak assignments from natural abundance 1D ^{13}C , $^1\text{H}/^{13}\text{C}$ HSQC and HMBC spectra.