

High Density Arrays of Sub-Micron Spherical Supported Lipid Bilayers

Nathan J. Wittenberg,^{1,} Timothy W. Johnson¹ and Sang-Hyun Oh^{1,2,*}*

¹Laboratory of Nanostructures and Biosensing, Department of Electrical and Computer Engineering, University of Minnesota, Minneapolis, MN 55455, USA.

²Department of Biophysics and Chemical Biology, Seoul National University, Seoul 151-747, Korea.

*Email: witt0092@umn.edu; sang@umn.edu

Supporting Information

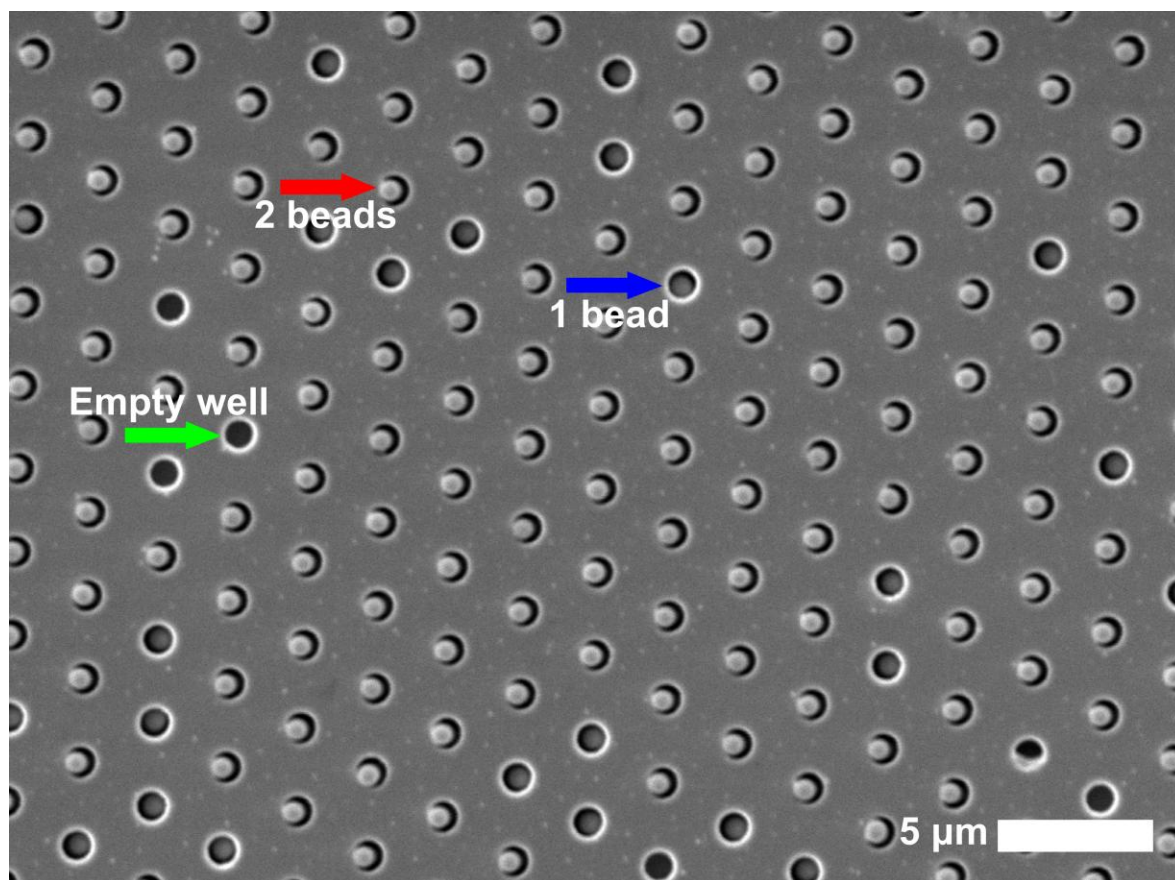


Figure S-1. SEM image of a microwell array having hole diameter and depth of 1 μm . Microwells of these dimensions can accommodate up to 2 SSLBs per well, as indicated by the red arrow. Some wells contain only 1 SSLB (blue arrow), while others remain vacant (green arrow).

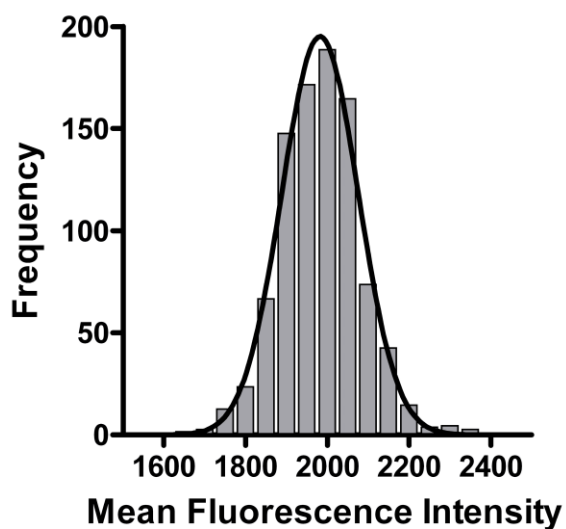


Figure S-2. Histogram showing the distribution of fluorescence intensities for the SSLB array shown in Figure 3a. The solid line is a Gaussian fit to the data.

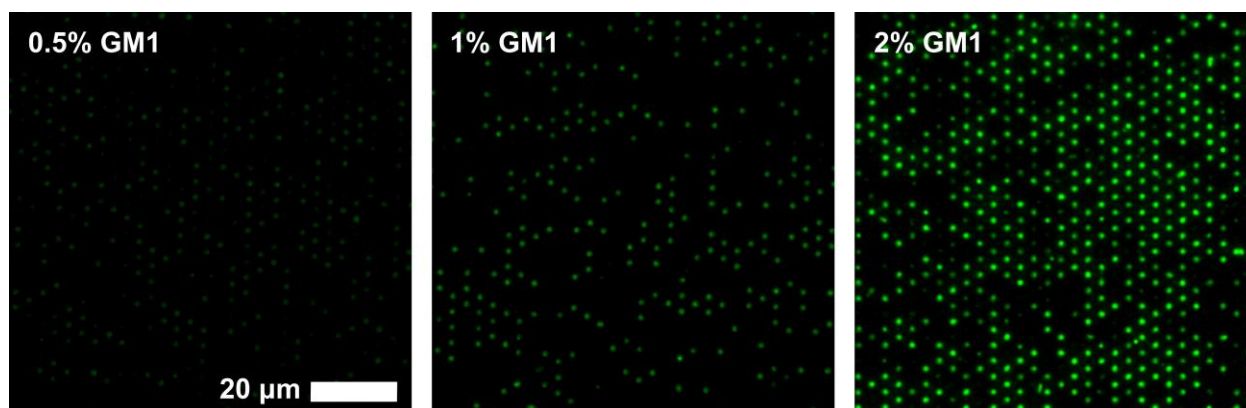


Figure S-3. SSLB arrays with 0.5, 1 and 2 % GM1 after incubation with 50 nM CTX, showing the increase in amount of CTX bound as the amount of GM1 on the SSLB increases. The data from these images is shown in histogram form in Figure 5a.