

SUPPLEMENTARY DATA

FIG. S1. Linear regression of the relative DNA ratios and DNA ploidy levels. The slope of the regression is indicated.

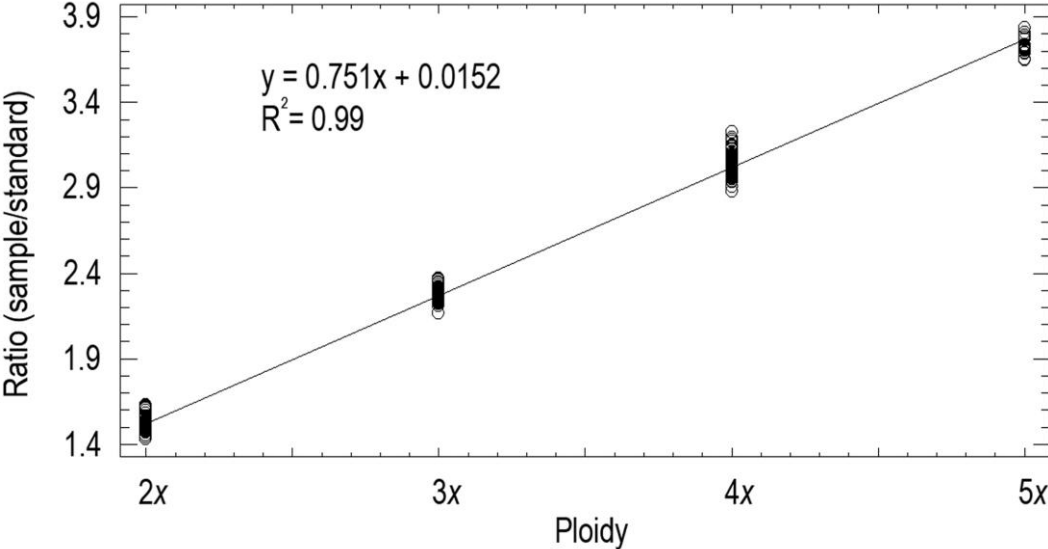


FIG. S2. Distribution of the relative DNA contents (DNA ratios) in *Sorbus* grouped under different taxonomic criteria. (A) Diploid parental *S. aria*, *S. aucuparia* and *S. torminalis*; (B) Diploid species and homoploid hybrids; (C) triploid taxa; (D) tetraploid taxa.

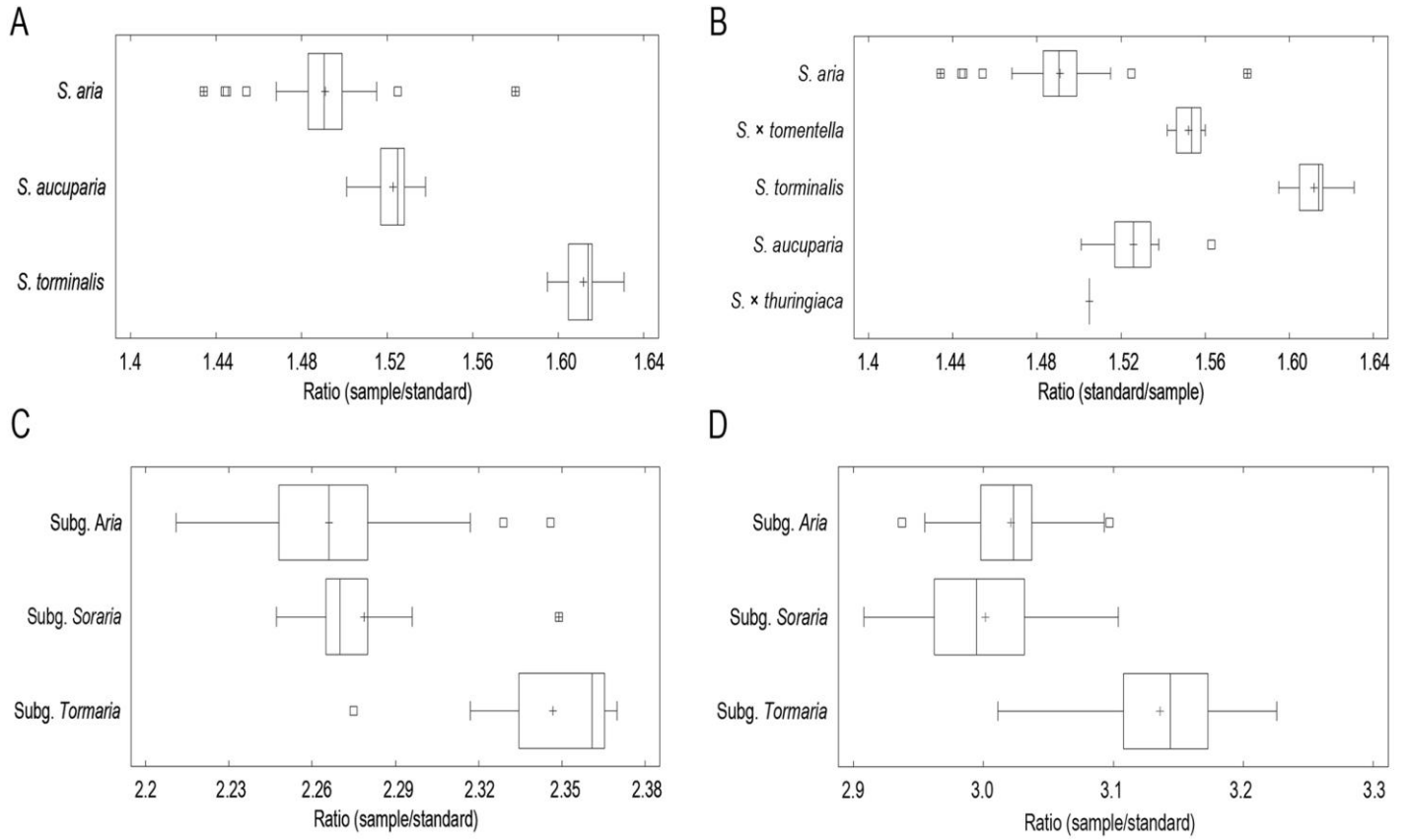


TABLE S1. Detailed information about the taxa studied including localities, collectors and flow cytometric results.

	Allien taxa
	Dubious taxa

Flow cytometry number	Species	Locality	collector	Ratio FCM (standard/sample)	DNA Ploidy
FC338	<i>Sorbus admonitor</i>	Watersmeet	T. Rich & S. Whild	3.138	4x = tetraploid
FC339	<i>Sorbus admonitor</i>	Watersmeet	T. Rich & S. Whild	3.226	4x = tetraploid
FC340	<i>Sorbus admonitor</i>	Watersmeet	T. Rich & S. Whild	3.173	4x = tetraploid
FC343	<i>Sorbus admonitor</i>	Watersmeet	T. Rich & S. Whild	3.152	4x = tetraploid
FC388	<i>Sorbus americana</i>	Canada. Québec, 49°00'N, 74°00'W. Loc. 21. Desmaraisville. Road 113, NW-laïta.	M. Christenhusz	1.533	2x = diploid
FC002	<i>Sorbus anglica</i>	The Plain, Leigh Woods	T. C. G. Rich, L. Houston, S. Ludwig, I. Trotman	2.997	4x = tetraploid
FC119b	<i>Sorbus anglica</i>	Symonds Yat, west side	M. Fay, J. P. Moscardo, S. Clermont, T. Rich	3.006	4x = tetraploid
FC150	<i>Sorbus anglica</i>	Coldwell Rocks, Ship Rock	M. Fay, J. P. Moscardo, S. Clermont, T. Rich	2.956	4x = tetraploid
FC151	<i>Sorbus anglica</i>	Coldwell Rocks, Ship Rock	M. Fay, J. P. Moscardo, S. Clermont, T. Rich	2.967	4x = tetraploid
FC170	<i>Sorbus anglica</i>	Craig y Cilau NNR	T. C. G. Rich	3.026	4x = tetraploid
FC180	<i>Sorbus anglica</i>	Craig y Cilau NNR	T. C. G. Rich	2.951	4x = tetraploid
FC209	<i>Sorbus anglica</i>	Craig y Cilau NNR	T. C. G. Rich	2.991	4x = tetraploid
FC210	<i>Sorbus anglica</i>	Pwll-du Quarry, Govilon	T. C. G. Rich	2.960	4x = tetraploid
FC216	<i>Sorbus anglica</i>	Cwm Clydach NNR area	T. C. G. Rich	2.94	4x = tetraploid
FC220	<i>Sorbus anglica</i>	Cwm Clydach NNR	T. C. G. Rich	2.96	4x = tetraploid
FC302	<i>Sorbus anglica</i>	Lovers Leap, west end of Piercefield Cliffs (cultivated at NBGW)	T. C. G. Rich	3.028	4x = tetraploid

FC307	<i>Sorbus anglica</i>	West Craggs, Craig Breidden, Montgomery (cultivated at NBGW)	T. C. G. Rich	2.992	4x = tetraploid
FC331	<i>Sorbus anglica</i>	Woody Bay	T. Rich	3.032	4x = tetraploid
FC366	<i>Sorbus anglica</i>	Lover's Leap, Piercefield	T. Rich & L. Houston	2.978	4x = tetraploid
L144	<i>Sorbus anglica</i>	Cheddar Gorge, N (NT) side	L. Houston	3.002	4x = tetraploid
L145	<i>Sorbus anglica</i>	Cheddar Gorge, N (NT) side	L. Houston	3.088	4x = tetraploid
FC004	<i>Sorbus aria</i>	The Gully, Clifton	T. C. G. Rich, L. Houston, S. Ludwig, I. Trotman	1.495	2x = diploid
FC005	<i>Sorbus aria</i>	The Gully, Clifton	T. C. G. Rich, L. Houston, S. Ludwig, I. Trotman	1.483	2x = diploid
FC006	<i>Sorbus aria</i>	The Gully, Clifton	T. C. G. Rich, L. Houston, S. Ludwig, I. Trotman	1.496	2x = diploid
FC010	<i>Sorbus aria</i>	The Gully, Clifton	T. C. G. Rich, L. Houston, S. Ludwig, I. Trotman	1.494	2x = diploid
FC011	<i>Sorbus aria</i>	The Gully, Clifton	Ludwig, I. Trotman	1.479	2x = diploid
FC014	<i>Sorbus aria</i>	Stokeleigh Camp, southern ramparts	T. C. G. Rich, L. Houston, S. Ludwig, I. Trotman	1.496	2x = diploid
FC017	<i>Sorbus aria</i>	Stokeleigh Camp, southern ramparts	T. C. G. Rich, L. Houston, S. Ludwig, I. Trotman	1.508	2x = diploid
FC018	<i>Sorbus aria</i>	Leigh Woods, Quarry 4	T. C. G. Rich, L. Houston, S. Ludwig, I. Trotman	1.481	2x = diploid
FC019	<i>Sorbus aria</i>	Leigh Woods, S side parish wall	Ludwig, I. Trotman	1.479	2x = diploid
FC020	<i>Sorbus aria</i>	Stokeleigh Camp, southern ramparts	T. C. G. Rich, L. Houston, S. Ludwig, I. Trotman	1.489	2x = diploid
FC022	<i>Sorbus aria</i>	Stokeleigh Camp, southern ramparts	T. C. G. Rich, L. Houston, S. Ludwig, I. Trotman	1.502	2x = diploid
FC024	<i>Sorbus aria</i>	Leigh Woods, S side parish wall	T. C. G. Rich, L. Houston, S. Ludwig, I. Trotman	1.487	2x = diploid
FC038	<i>Sorbus aria</i>	Redcliff Bay, Portishead	L. Houston, M. Fay, J. P. Moscardo, S. Clermont, T. Rich	1.445	2x = diploid
FC039	<i>Sorbus aria</i>	Redcliff Bay, Portishead	L. Houston, M. Fay, J. P. Moscardo, S. Clermont, T. Rich	1.444	2x = diploid
FC055	<i>Sorbus aria</i>	Worlebury Hill, west end	L. Houston, M. Fay, J. P. Moscardo, S. Clermont, T.	1.483	2x = diploid

			Rich		
			L. Houston, M. Fay, J. P. Moscardo, S. Clermont, T.		
FC056	Sorbus aria	Worlebury Hill, west end	Rich	1.500	2x = diploid
			L. Houston, M. Fay, J. P. Moscardo, S. Clermont, T.		
FC057	Sorbus aria	Worlebury Hill, west end	Rich	1.500	2x = diploid
			L. Houston, M. Fay, J. P. Moscardo, S. Clermont, T.		
FC058	Sorbus aria	Worlebury Hill, west end	Rich	1.515	2x = diploid
			L. Houston, M. Fay, J. P. Moscardo, S. Clermont, T.		
FC059	Sorbus aria	Worlebury Hill, west end	Rich	1.507	2x = diploid
			L. Houston, M. Fay, J. P. Moscardo, S. Clermont, T.		
FC060	Sorbus aria	Worlebury Hill, west end	Rich	1.490	2x = diploid
			L. Houston, M. Fay, J. P. Moscardo, S. Clermont, T.		
FC061	Sorbus aria	Worlebury Hill, west end	Rich	1.434	2x = diploid
			L. Houston, M. Fay, J. P. Moscardo, S. Clermont, T.		
FC062	Sorbus aria	Worlebury Hill, west end	Rich	1.493	2x = diploid
			L. Houston, M. Fay, J. P. Moscardo, S. Clermont, T.		
FC063	Sorbus aria	Worlebury Hill, west end	Rich	1.499	2x = diploid
			L. Houston, M. Fay, J. P. Moscardo, S. Clermont, T.		
FC066	Sorbus aria	East Wood, Portishead	Rich	1.483	2x = diploid
			L. Houston, M. Fay, J. P. Moscardo, S. Clermont, T.		
FC067	Sorbus aria	East Wood, Portishead	Rich	1.525	2x = diploid
			L. Houston, M. Fay, J. P. Moscardo, S. Clermont, T.		
FC069	Sorbus aria	East Wood, Portishead	Rich	1.499	2x = diploid
			L. Houston, M. Fay, J. P. Moscardo, S. Clermont, T.		
FC070	Sorbus aria	East Wood, Portishead	Rich	1.489	2x = diploid
FC073	Sorbus aria	East Wood, Portishead	L. Houston, M. Fay, J. P.	1.487	2x = diploid

			Moscardo, S. Clermont, T. Rich		
			L. Houston, M. Fay, J. P. Moscardo, S. Clermont, T. Rich		
FC074	Sorbus aria	East Wood, Portishead	Rich	1.488	2x = diploid
FC081	Sorbus aria	Seven Sisters, northern outcrop	M. Fay, J. P. Moscardo, S. Clermont, T. Rich	1.478	2x = diploid
FC082	Sorbus aria	Seven Sisters, northern outcrop	M. Fay, J. P. Moscardo, S. Clermont, T. Rich	1.503	2x = diploid
FC085	Sorbus aria	Seven Sisters, middle outcrop	M. Fay, J. P. Moscardo, S. Clermont, T. Rich	1.477	2x = diploid
FC092	Sorbus aria	Seven Sisters, cliff edge before main outcrop	M. Fay, J. P. Moscardo, S. Clermont, T. Rich	1.483	2x = diploid
FC097	Sorbus aria	Seven Sisters, cliff edge before main outcrop	M. Fay, J. P. Moscardo, S. Clermont, T. Rich	1.481	2x = diploid
FC098	Sorbus aria	Seven Sisters, cliff edge before main outcrop	M. Fay, J. P. Moscardo, S. Clermont, T. Rich	1.506	2x = diploid
FC100	Sorbus aria	Seven Sisters, cliff edge before main outcrop	M. Fay, J. P. Moscardo, S. Clermont, T. Rich	1.491	2x = diploid
FC103	Sorbus aria	Seven Sisters, main outcrop	M. Fay, J. P. Moscardo, S. Clermont, T. Rich	1.506	2x = diploid
FC108	Sorbus aria	Seven Sisters, main outcrop	M. Fay, J. P. Moscardo, S. Clermont, T. Rich	1.495	2x = diploid
FC109	Sorbus aria	Seven Sisters, east of main outcrop	M. Fay, J. P. Moscardo, S. Clermont, T. Rich	1.487	2x = diploid
FC110	Sorbus aria	Seven Sisters, east of main outcrop	M. Fay, J. P. Moscardo, S. Clermont, T. Rich	1.525	2x = diploid
FC112	Sorbus aria	Seven Sisters, east of main outcrop	M. Fay, J. P. Moscardo, S. Clermont, T. Rich	1.501	2x = diploid
FC116	Sorbus aria	Seven Sisters, east of main outcrop	M. Fay, J. P. Moscardo, S. Clermont, T. Rich	1.493	2x = diploid
FC119a	Sorbus aria	Seven Sisters, east of main outcrop	M. Fay, J. P. Moscardo, S. Clermont, T. Rich	1.580	2x = diploid
FC125	Sorbus aria	Symonds Yat, west side	M. Fay, J. P. Moscardo, S. Clermont, T. Rich	1.487	2x = diploid
FC145	Sorbus aria	Coldwell Rocks, near Ship Rock	M. Fay, J. P. Moscardo, S. Clermont, T. Rich	1.489	2x = diploid
FC154	Sorbus aria	Offa's Dyke, Tidenham Chase	M. Fay, J. P. Moscardo, S. Clermont, T. Rich	1.485	2x = diploid

FC155	Sorbus aria	Offa's Dyke, Tidenham Chase	M. Fay, J. P. Moscardo, S. Clermont, T. Rich	1.495	2x = diploid
FC156	Sorbus aria	Offa's Dyke, Tidenham Chase	M. Fay, J. P. Moscardo, S. Clermont, T. Rich	1.485	2x = diploid
FC157	Sorbus aria	Offa's Dyke, Tidenham Chase	M. Fay, J. P. Moscardo, S. Clermont, T. Rich	1.475	2x = diploid
FC158	Sorbus aria	Offa's Dyke, Tidenham Chase	M. Fay, J. P. Moscardo, S. Clermont, T. Rich	1.488	2x = diploid
FC159	Sorbus aria	Offa's Dyke, Tidenham Chase	M. Fay, J. P. Moscardo, S. Clermont, T. Rich	1.509	2x = diploid
FC160	Sorbus aria	Offa's Dyke, Tidenham Chase	M. Fay, J. P. Moscardo, S. Clermont, T. Rich	1.493	2x = diploid
FC351	Sorbus aria	Gorrashill Wood	T. Rich	1.489	2x = diploid
FC352	Sorbus aria	Gorrashill Wood	T. Rich	1.492	2x = diploid
FC353	Sorbus aria	Gorrashill Wood	T. Rich	1.49	2x = diploid
FC354	Sorbus aria	Offa's Dyke, Tidenham	T. Rich	1.477	2x = diploid
FC356	Sorbus aria	Plumweir Cliff, Tidenham	T. Rich & L. Houston	1.482	2x = diploid
FC357	Sorbus aria	Plumweir Cliff, Tidenham	T. Rich & L. Houston	1.492	2x = diploid
FC358	Sorbus aria	Devil's Pulpit, Tidenham	T. Rich & L. Houston	1.483	2x = diploid
FC362	Sorbus aria	Woodcroft Quarry	T. Rich & L. Houston	1.473	2x = diploid
FC365	Sorbus aria	Lover's Leap, Piercefield	T. Rich & L. Houston	1.488	2x = diploid
FC382	Sorbus aria	Austria. Niederösterreich, Hainburg	M. Christenhusz	1.479	2x = diploid
FC383	Sorbus aria	Austria. Niederösterreich, Hainburg	M. Christenhusz	1.454	2x = diploid
FC6478	Sorbus aria	Col de la Pierre St Martin, Spain	M. J. M. Christenhusz, M. Chase & M. Fay	1.509	2x = diploid
FC6481	Sorbus aria	Col de la Pierre St Martin, Spain	M. J. M. Christenhusz, M. Chase & M. Fay	1.503	2x = diploid
L014	Sorbus aria	Cheddar, N side (NT reserve)	L. Houston	1.5	2x = diploid
L021	Sorbus aria	Fairyland, Clifton	L. Houston	1.498	2x = diploid
L060	Sorbus aria	Cheddar Gorge S side, Gough's Cliffs, above Caves complex	L. Houston	1.478	2x = diploid
L100	Sorbus aria	Cheddar Gorge S side, Gough's Cliffs, Twin Cliffs top	L. Houston	1.5	2x = diploid
L102	Sorbus aria	Cheddar Gorge S side, Gough's Cliffs W, top tier	L. Houston	1.498	2x = diploid

L103	Sorbus aria	Cheddar Gorge S side, Gough's Top, W	L. Houston	1.489	2x = diploid
L105	Sorbus aria	Cheddar Gorge S side, Gough's Top, W	L. Houston	1.497	2x = diploid
L106	Sorbus aria	Cheddar Gorge S side, E of Shoot Gully	L. Houston	1.499	2x = diploid
L107	Sorbus aria	Cheddar Gorge S side, E of Shoot Gully	L. Houston	1.481	2x = diploid
L110	Sorbus aria	Cheddar Gorge S side, E of Shoot Gully	L. Houston	1.495	2x = diploid
L117	Sorbus aria	Cheddar Gorge, N (NT) side, Heart Leaf Bluff	L. Houston	1.485	2x = diploid
L118	Sorbus aria	Cheddar Gorge, N (NT) side, Heart Leaf Bluff	L. Houston	1.495	2x = diploid
L120	Sorbus aria	Cheddar Gorge, N (NT) side, Commoners' Spur	L. Houston	1.489	2x = diploid
L130	Sorbus aria	Weston Big Wood: Valley Road	L. Houston	1.501	2x = diploid
L132	Sorbus aria	Weston Big Wood: Valley Road	L. Houston	1.468	2x = diploid
L134	Sorbus aria	Avon Gorge, vc 6: Leigh Woods plateau	L. Houston	1.493	2x = diploid
L139	Sorbus aria	Burrington Combe	L. Houston	1.495	2x = diploid
L121	Sorbus aria x eminens	Cheddar Gorge, N (NT) side, Commoners' Spur	L. Houston	2.285	3x = triploid
FC131	Sorbus aria x porrigentiformis	Symonds Yat viewpoint by café	M. Fay, J. P. Moscardo, S. Clermont, T. Rich	2.278	3x = triploid
L125	Sorbus aria x porrigentiformis	Blaise Estate, Goram's Chair	L. Houston	2.252	3x = triploid
L126	Sorbus aria x porrigentiformis	Blaise Estate, Potter's Point	L. Houston	2.272	3x = triploid
L127	Sorbus aria x porrigentiformis	Blaise Estate, Potter's Point	L. Houston	2.239	3x = triploid
L128	Sorbus aria x porrigentiformis	Blaise Estate, Potter's Point	L. Houston	2.289	3x = triploid
FC007	Sorbus aucuparia	The Plain, Leigh Woods	T. C. G. Rich, L. Houston, S. Ludwig, I. Trotman	1.523	2x = diploid
FC137	Sorbus aucuparia	Symonds Yat, east side	M. Fay, J. P. Moscardo, S. Clermont, T. Rich	1.506	2x = diploid
FC166	Sorbus aucuparia	Craig y Castell	T. C. G. Rich	1.516	2x = diploid

FC167	<i>Sorbus aucuparia</i>	Craig y Cilau NNR	T. C. G. Rich	1.528	2x = diploid
FC196	<i>Sorbus aucuparia</i>	Penmoelallt	T. C. G. Rich	1.526	2x = diploid
FC206	<i>Sorbus aucuparia</i>	Penmoelallt	T. C. G. Rich	1.537	2x = diploid
FC211	<i>Sorbus aucuparia</i>	Pwll-du Quarry, Govilon	T. C. G. Rich	1.517	2x = diploid
FC319	<i>Sorbus aucuparia</i>	Neck Wood, Trentishoe	T. Rich & S. Whild	1.517	2x = diploid
FC369	<i>Sorbus aucuparia</i>	Finland. Uusimaa, Vihti. Nuuksio National Park. W of the lake Haukkalampi. N 60 18'23", E 24 30'12".	M. Christenhusz	1.501	2x = diploid
FC370	<i>Sorbus aucuparia</i>	Finland. Uusimaa, Vihti. Nuuksio National Park. W of the lake Haukkalampi. N 60 18'23", E 24 30'12".	M. Christenhusz	1.528	2x = diploid
FC6479	<i>Sorbus aucuparia</i>	Col de la Pierre St Martin, Spain	M. J. M. Christenhusz, M. Chase & M. Fay	1.538	2x = diploid
FC6480	<i>Sorbus aucuparia</i>	Col de la Pierre St Martin, Spain	M. J. M. Christenhusz, M. Chase & M. Fay	1.534	2x = diploid
FC6494	<i>Sorbus aucuparia</i>	Pyrenees Atlantiques, Lac d'Artouste near Gabas, France	M. J. M. Christenhusz, M. Chase & M. Fay	1.525	2x = diploid
FC371	<i>Sorbus aucuparia carelica</i>	Finland. Nastola.	M. Christenhusz	1.529	2x = diploid
FC372	<i>Sorbus aucuparia heteromorpha</i>	Finland. Åland (Ahvenanmaa), Lemland, Nåtö Island Biological Station.	M. Christenhusz	1.563	2x = diploid
FC373	<i>Sorbus aucuparia x hybrida</i>	unknown, historic tree in garden	M. Christenhusz	1.565	2x = diploid
FC009	<i>Sorbus bristoliensis</i>	The Gully, Clifton	T. C. G. Rich, L. Houston, S. Ludwig, I. Trotman	2.318	3x = triploid
FC161	<i>Sorbus cambrensis</i>	Coed Pantydarren	T. C. G. Rich	3.722	5x = pentaploid
FC162	<i>Sorbus cambrensis</i>	Coed Pantydarren	T. C. G. Rich	3.768	5x = pentaploid
FC163	<i>Sorbus cambrensis</i>	Coed Pantydarren	T. C. G. Rich	3.689	5x = pentaploid
FC175	<i>Sorbus cambrensis</i>	Craig y Cilau NNR	T. C. G. Rich	3.794	5x = pentaploid
FC178	<i>Sorbus cambrensis</i>	Craig y Cilau NNR	T. C. G. Rich	3.769	5x = pentaploid
FC179	<i>Sorbus cambrensis</i>	Craig y Cilau NNR	T. C. G. Rich	3.833	5x = pentaploid
FC186	<i>Sorbus cambrensis</i>	Craig y Cilau NNR	T. C. G. Rich	3.724	5x = pentaploid

FC189	<i>Sorbus cambrensis</i>	Craig y Cilau NNR	T. C. G. Rich	3.782	5x = pentaploid
FC193	<i>Sorbus cambrensis</i>	Craig y Cilau NNR	T. C. G. Rich	3.734	5x = pentaploid
FC217	<i>Sorbus cambrensis</i>	Cwm Clydach NNR	T. C. G. Rich	3.647	5x = pentaploid
FC218	<i>Sorbus cambrensis</i>	Cwm Clydach NNR	T. C. G. Rich	3.711	5x = pentaploid
FC219	<i>Sorbus cambrensis</i>	Cwm Clydach NNR	T. C. G. Rich	3.69	5x = pentaploid
FC221	<i>Sorbus cambrensis</i>	Cwm Clydach NNR	T. C. G. Rich	3.715	5x = pentaploid
L048	<i>Sorbus cf. anglica x aria</i>	Cheddar Gorge S side, Gough's Cliffs, Rock-sport spur	L. Houston	2.276	3x = triploid
L047	<i>Sorbus cf. aria</i> introgressed with <i>torminalis</i>	Cheddar Gorge S side, Gough's Cliffs, Rock-sport spur Craig y Cilau, Llangattock	L. Houston	2.254	3x = triploid
FC300	<i>Sorbus cf. cambrensis</i>	(cultivated at NBGW)	T. C. G. Rich	2.249	3x = triploid
L016	<i>Sorbus cf. cheddarensis</i>	Draycott Housegrounds Reserve	L. Houston	2.263	3x = triploid
L017	<i>Sorbus cf. cheddarensis</i>	Cheddar, N side (NT reserve), Horseshoe Bend	L. Houston	2.228	3x = triploid
L049	<i>Sorbus cf. cheddarensis</i>	Cheddar Gorge S side, Gough's Cliffs, N of Caves offices	L. Houston	2.246	3x = triploid
L052	<i>Sorbus cf. cheddarensis</i>	Cheddar Gorge S side, Gough's Cliffs, high open spur	L. Houston	2.309	3x = triploid
L055	<i>Sorbus cf. cheddarensis</i>	Cheddar Gorge S side, Gough's Cliffs, back of high spur	L. Houston	2.286	3x = triploid
L071	<i>Sorbus cf. cheddarensis</i>	Cheddar Gorge S side, Gough's Cliffs, E	L. Houston	2.277	3x = triploid
L079	<i>Sorbus cf. cheddarensis</i>	Cheddar Gorge S side, E of Jacob's Ladder	L. Houston	2.278	3x = triploid
L104	<i>Sorbus cf. cheddarensis</i>	Cheddar Gorge S side, Gough's Top, W	L. Houston	2.278	3x = triploid
L108	<i>Sorbus cf. cheddarensis</i>	Cheddar Gorge S side, E of Shoot Gully	L. Houston	2.243	3x = triploid
L109	<i>Sorbus cf. cheddarensis</i>	Cheddar Gorge S side, E of Shoot Gully	L. Houston	2.248	3x = triploid
L112	<i>Sorbus cf. cheddarensis</i>	Cheddar Gorge, N (NT) side, Heart Leaf Bluff	L. Houston	2.241	3x = triploid
L113	<i>Sorbus cf. cheddarensis</i>	Cheddar Gorge, N (NT) side, Commoners' Spur	L. Houston	2.27	3x = triploid

L114	Sorbus cf. cheddarensis	Cheddar Gorge, N (NT) side, Commoners' Spur	L. Houston	2.3	3x = triploid
L119	Sorbus cf. cheddarensis	Cheddar Gorge, N (NT) side, Commoners' Spur	L. Houston	2.265	3x = triploid
L122	Sorbus cf. cheddarensis	Cheddar Gorge, N (NT) side, Commoners' Spur	L. Houston L. Houston, M. Fay, J. P. Moscardo, S. Clermont, T. Rich	2.253	3x = triploid
FC028	Sorbus cf. eminens	Kilkenny Bay, Portishead	Rich	3.019	4x = tetraploid
L066	Sorbus cf. eminens	Cheddar Gorge S side, coach park slopes	L. Houston	3.019	4x = tetraploid
L068	Sorbus cf. eminens	Cheddar Gorge S side, coach park slopes	L. Houston	3.047	4x = tetraploid
L058	Sorbus cf. eminentoides	Cheddar Gorge S side, Gough's Cliffs, twin cliffs gully	L. Houston	3.043	4x = tetraploid
L064	Sorbus cf. eminentoides	Cheddar Gorge S side, Gough's Cliffs, twin cliffs gully	L. Houston	3.012	4x = tetraploid
L098	Sorbus cf. eminentoides	Cheddar Gorge S side, Gough's Cliffs, Twin Cliffs gully (top)	L. Houston	2.987	4x = tetraploid
L099	Sorbus cf. eminentoides	Cheddar Gorge S side, Gough's Cliffs, Twin Cliffs gully (top)	L. Houston	3.029	4x = tetraploid
L101	Sorbus cf. eminentoides	Cheddar Gorge S side, Gough's Cliffs, Twin Cliffs top	L. Houston	3.014	4x = tetraploid
L035	Sorbus cf. leighensis	Avon Gorge, above Portway	L. Houston	2.296	3x = triploid
L036	Sorbus cf. leighensis	Avon Gorge, Great Quarry, Clifton	L. Houston	2.297	3x = triploid
L028	Sorbus cf. Observatory Hill taxon	Observatory Hill, Clifton	L. Houston	2.256	3x = triploid
L029	Sorbus cf. Observatory Hill taxon	Observatory Hill, Clifton	L. Houston	2.248	3x = triploid
L030	Sorbus cf. Observatory Hill taxon	Observatory Hill, Clifton	L. Houston	2.281	3x = triploid
L032	Sorbus cf. Observatory Hill taxon	Observatory Hill, Clifton	L. Houston	2.24	3x = triploid
L033	Sorbus cf. Observatory Hill taxon	Observatory Hill, Clifton	L. Houston L. Houston, M. Fay, J. P. Moscardo, S. Clermont, T. Rich	2.264	3x = triploid
FC071	Sorbus cf. Portishead taxon x aria	East Wood, Portishead	Rich	2.230	3x = triploid

FC304	<i>Sorbus cf. stirtoniana</i>	West Craggs, Craig Breidden, Montgomery (cultivated at NBGW)	T. C. G. Rich	1.489	2x = diploid
FC305	<i>Sorbus cf. stirtoniana</i>	West Craggs, Craig Breidden, Montgomery (cultivated at NBGW)	T. C. G. Rich	1.498	2x = diploid
L001	<i>Sorbus cf. x avonensis</i>	Leigh Woods, Stokeleigh Cliffs	L. Houston	2.259	3x = triploid
L002	<i>Sorbus cf. x avonensis</i>	Leigh Woods, Stokeleigh Cliffs	L. Houston	2.248	3x = triploid
L003	<i>Sorbus cf. x avonensis</i>	Leigh Woods, Stokeleigh Cliffs	L. Houston	2.242	3x = triploid
L004	<i>Sorbus cf. x avonensis</i>	Leigh Woods, Stokeleigh Cliffs	L. Houston	2.24	3x = triploid
L005	<i>Sorbus cf. x avonensis</i>	Leigh Woods, Stokeleigh Cliffs	L. Houston	2.248	3x = triploid
L006	<i>Sorbus cf. x avonensis</i>	Leigh Woods, Stokeleigh Cliffs	L. Houston	2.242	3x = triploid
L007	<i>Sorbus cf. x avonensis</i>	Leigh Woods, Stokeleigh Cliffs	L. Houston	2.235	3x = triploid
L008	<i>Sorbus cf. x avonensis</i>	Leigh Woods, Stokeleigh Cliffs	L. Houston	2.248	3x = triploid
L009	<i>Sorbus cf. x avonensis</i>	Leigh Woods, Stokeleigh Cliffs	L. Houston	2.262	3x = triploid
L010	<i>Sorbus cf. x avonensis</i>	Leigh Woods, Stokeleigh Cliffs	L. Houston	2.264	3x = triploid
L011	<i>Sorbus cf. x avonensis</i>	Leigh Woods, Stokeleigh Cliffs	L. Houston	2.257	3x = triploid
L013	<i>Sorbus cf. x avonensis</i>	Leigh Woods, Rockfall Cliff	L. Houston	2.285	3x = triploid
L043	<i>Sorbus cf. x avonensis</i>	Quarry 4, Leigh Woods	L. Houston	2.288	3x = triploid
FC384	<i>Sorbus chamaemespilus</i>	Switzerland. Valais 1700 m	M. Christenhusz	3.105	4x = tetraploid
FC385	<i>Sorbus chamaemespilus</i>	Slovenia. Pod Spikom c. 1400 m, south of Karanjska Gora.	M. Christenhusz	1.596	2x = diploid
L018	<i>Sorbus cheddarensis</i>	Cheddar, N side (NT reserve), Horseshoe Bend	L. Houston	2.245	3x = triploid
L019	<i>Sorbus cheddarensis</i>	Cheddar, N side (NT reserve), Overshoot Wall area	L. Houston	2.279	3x = triploid
L020	<i>Sorbus cheddarensis</i>	Cheddar, N side (NT reserve), Overshoot Wall area	L. Houston	2.272	3x = triploid
L022	<i>Sorbus cheddarensis</i>	Cheddar, N side (NT reserve), Horseshoe Bend	L. Houston	2.281	3x = triploid
L111	<i>Sorbus cheddarensis</i>	Cheddar Gorge S side, E of Shoot Gully	L. Houston	2.243	3x = triploid
FC387	<i>Sorbus commixta</i>	Japan. Hokkaido, Rumoi District. Teshio Experimental Forest of	M. Christenhusz	1.517	2x = diploid

Hokkaido University.					
FC309	<i>Sorbus cuneifolia</i>	Eglwyseg mountain, Tom Knight (cultivated at NBGW)	T. C. G. Rich	2.963	4x = tetraploid
FC389	<i>Sorbus decora</i>	Canada. Ontario, Algoma District, Batchawana Bay, shore of Lake Superior. 46°55'N, 84°40'W.	M. Christenhusz	3.006	4x = tetraploid
FC311	<i>Sorbus devoniensis</i>	South Molton roadside	T. Rich & S. Whild	3.126	4x = tetraploid
FC312	<i>Sorbus devoniensis</i>	Neck Wood, Trentishoe	T. Rich & S. Whild	3.185	4x = tetraploid
FC314	<i>Sorbus devoniensis</i>	Neck Wood, Trentishoe	T. Rich & S. Whild	3.15	4x = tetraploid
FC325	<i>Sorbus devoniensis</i>	Woody Bay	T. Rich & S. Whild	3.108	4x = tetraploid
FC326	<i>Sorbus devoniensis</i>	Woody Bay	T. Rich & S. Whild	3.145	4x = tetraploid
FC330	<i>Sorbus devoniensis</i>	Woody Bay	T. Rich	3.196	4x = tetraploid
FC015	<i>Sorbus eminens</i>	Leigh Woods	T. C. G. Rich, L. Houston, S. Ludwig, I. Trotman	3.027	4x = tetraploid
FC016	<i>Sorbus eminens</i>	Leigh Woods	T. C. G. Rich, L. Houston, S. Ludwig, I. Trotman	3.03	4x = tetraploid
FC021	<i>Sorbus eminens</i>	Towpath, Leigh Woods	T. C. G. Rich, L. Houston, S. Ludwig, I. Trotman	3.025	4x = tetraploid
FC023	<i>Sorbus eminens</i>	Leigh Woods	T. C. G. Rich, L. Houston, S. Ludwig, I. Trotman	3.055	4x = tetraploid
FC046	<i>Sorbus eminens</i>	Helen's Steps, Worle	L. Houston, M. Fay, J. P. Moscardo, S. Clermont, T. Rich	3.054	4x = tetraploid
FC047	<i>Sorbus eminens</i>	Helen's Steps, Worle	L. Houston, M. Fay, J. P. Moscardo, S. Clermont, T. Rich	3.026	4x = tetraploid
FC048	<i>Sorbus eminens</i>	Helen's Steps, Worle	L. Houston, M. Fay, J. P. Moscardo, S. Clermont, T. Rich	3.032	4x = tetraploid
FC049	<i>Sorbus eminens</i>	Helen's Steps, Worle	L. Houston, M. Fay, J. P. Moscardo, S. Clermont, T. Rich	3.033	4x = tetraploid
FC050	<i>Sorbus eminens</i>	Helen's Steps, Worle	L. Houston, M. Fay, J. P. Moscardo, S. Clermont, T. Rich	3.011	4x = tetraploid
FC051	<i>Sorbus eminens</i>	Toll Road, Weston-super-mare	L. Houston, M. Fay, J. P. Moscardo, S. Clermont, T.	3.037	4x = tetraploid

			Rich		
			L. Houston, M. Fay, J. P. Moscardo, S. Clermont, T. Rich		
FC052	Sorbus eminens	Toll Road, Weston-super-mare	Rich	3.037	4x = tetraploid
			L. Houston, M. Fay, J. P. Moscardo, S. Clermont, T. Rich		
FC053	Sorbus eminens	Toll Road, Weston-super-mare	Rich	3.036	4x = tetraploid
			L. Houston, M. Fay, J. P. Moscardo, S. Clermont, T. Rich		
FC054	Sorbus eminens	Worlebury Hill, west end	Rich	3.009	4x = tetraploid
			L. Houston, M. Fay, J. P. Moscardo, S. Clermont, T. Rich		
FC072	Sorbus eminens	East Wood, Portishead	Rich	3.024	4x = tetraploid
		Cheddar Gorge S side, Gough's Cliffs, high open spur	L. Houston	3.043	4x = tetraploid
L051	Sorbus eminens	Cheddar Gorge S side, Gough's Cliffs, back of high spur	L. Houston	3.027	4x = tetraploid
L054	Sorbus eminens	Cheddar Gorge S side, Gough's Cliffs, mid cliffs slopes	L. Houston	3.046	4x = tetraploid
L057	Sorbus eminens	Cheddar Gorge S side, Gough's Cliffs, below twin cliffs	L. Houston	3.011	4x = tetraploid
L063	Sorbus eminens	Cheddar Gorge S side, coach park slopes	L. Houston	3.044	4x = tetraploid
L065	Sorbus eminens	Cheddar Gorge S side, Gough's Cliffs, E	L. Houston	3.066	4x = tetraploid
L073	Sorbus eminens	Cheddar Gorge S side, E of Jacob's Ladder	L. Houston	2.98	4x = tetraploid
L078	Sorbus eminens	Cheddar Gorge S side, Gough's Cliffs W, 1st upper tier	L. Houston	3.018	4x = tetraploid
L092	Sorbus eminens	Cheddar Gorge S side, Gough's Cliffs W, 1st upper tier	L. Houston	3.036	4x = tetraploid
L096	Sorbus eminens	Cheddar Gorge S side, Gough's Cliffs, Twin Cliffs gully (top)	L. Houston	3.028	4x = tetraploid
L097	Sorbus eminens	Cheddar Gorge S side, E of Shoot Gully	L. Houston	3.025	4x = tetraploid
L105	Sorbus eminens	Weston Big Wood: Valley Road	L. Houston	3.013	4x = tetraploid
L129	Sorbus eminens		I.C. Trueman & M.W.		
SP1	Sorbus eminens	Sutton Park, vc 38 Warwickshire	Poulton	2.992	4x = tetraploid

SP2	<i>Sorbus eminens</i>	Sutton Park, vc 38 Warwickshire	I.C. Trueman & M.W. Poulton	3.022	4x = tetraploid
SP3	<i>Sorbus eminens</i>	Sutton Park, vc 38 Warwickshire	I.C. Trueman & M.W. Poulton	3.026	4x = tetraploid
SP4	<i>Sorbus eminens</i>	Sutton Park, vc 38 Warwickshire	I.C. Trueman & M.W. Poulton	3.021	4x = tetraploid
SP5	<i>Sorbus eminens</i>	Sutton Park, vc 38 Warwickshire	I.C. Trueman & M.W. Poulton	3.038	4x = tetraploid
SP6	<i>Sorbus eminens</i>	Sutton Park, vc 38 Warwickshire	I.C. Trueman & M.W. Poulton	3.064	4x = tetraploid
FC084	<i>Sorbus eminentiformis</i>	Seven Sisters, middle outcrop	M. Fay, J. P. Moscardo, S. Clermont, T. Rich	2.998	4x = tetraploid
FC086	<i>Sorbus eminentiformis</i>	Seven Sisters, behind middle outcrop	M. Fay, J. P. Moscardo, S. Clermont, T. Rich	3.005	4x = tetraploid
FC093	<i>Sorbus eminentiformis</i>	Seven Sisters, cliff edge before main outcrop	M. Fay, J. P. Moscardo, S. Clermont, T. Rich	3.034	4x = tetraploid
FC107	<i>Sorbus eminentiformis</i>	Seven Sisters, main outcrop	M. Fay, J. P. Moscardo, S. Clermont, T. Rich	3.023	4x = tetraploid
FC123	<i>Sorbus eminentiformis</i>	Symonds Yat, west side	M. Fay, J. P. Moscardo, S. Clermont, T. Rich	2.988	4x = tetraploid
FC128	<i>Sorbus eminentiformis</i>	Symonds Yat, west side	M. Fay, J. P. Moscardo, S. Clermont, T. Rich	2.971	4x = tetraploid
FC133	<i>Sorbus eminentiformis</i>	Symonds Yat cleared viewpoint north of café	M. Fay, J. P. Moscardo, S. Clermont, T. Rich	2.970	4x = tetraploid
FC138	<i>Sorbus eminentiformis</i>	Coldwell Rocks, rock west of Ship Rock	M. Fay, J. P. Moscardo, S. Clermont, T. Rich	3.033	4x = tetraploid
FC142	<i>Sorbus eminentiformis</i>	Coldwell Rocks, near Ship Rock	M. Fay, J. P. Moscardo, S. Clermont, T. Rich	3.008	4x = tetraploid
FC146	<i>Sorbus eminentiformis</i>	Coldwell Rocks, near Ship Rock	M. Fay, J. P. Moscardo, S. Clermont, T. Rich	3.055	4x = tetraploid
L056	<i>Sorbus eminentoides</i>	Cheddar Gorge S side, Gough's Cliffs, mid cliffs slopes	L. Houston	2.975	4x = tetraploid
L062	<i>Sorbus eminentoides</i>	Cheddar Gorge S side, Gough's Cliffs, below twin cliffs	L. Houston	3.009	4x = tetraploid
L070	<i>Sorbus eminentoides</i>	Cheddar Gorge S side, Gough's Cliffs, E	L. Houston	3.05	4x = tetraploid
L076	<i>Sorbus eminentoides</i>	Cheddar Gorge S side, Gough's Top, W	L. Houston	3.002	4x = tetraploid

L095	<i>Sorbus eminentoides</i>	Cheddar Gorge S side, Gough's Cliffs W, 1st upper tier Finland. Åland (Ahvenanmaa), Lemland, Nåtö Island Biological Station.	L. Houston	2.977	4x = tetraploid
FC375	<i>Sorbus hybrida</i>	Finland. Åland (Ahvenanmaa), Lemland, Nåtö, just N from Mattson's (Gärsins Backe)	M. Christenhusz	2.908	4x = tetraploid
FC376	<i>Sorbus hybrida</i>		M. Christenhusz T. C. G. Rich, L. Houston, S.	2.984	4x = tetraploid
FC012	<i>Sorbus intermedia</i>	Towpath, Leigh Woods	Ludwig, I. Trotman	3.07	4x = tetraploid
FC377	<i>Sorbus intermedia</i>	unknown, historic tree in garden	M. Christenhusz	3.039	4x = tetraploid
FC378	<i>Sorbus intermedia</i>	unknown, historic tree in garden	M. Christenhusz	3.021	4x = tetraploid
FC379	<i>Sorbus intermedia</i>	Norway. Akershus, Asker, Hvalstrand. West end of Arnside Knott, Lancashire (cultivated at NBGW; origin ADP4, Ness Botanic Gardens)	M. Christenhusz	2.943	4x = tetraploid
FC308	<i>Sorbus lancastriensis</i>		T. C. G. Rich	2.995	4x = tetraploid
L080	<i>Sorbus lancastriensis</i>	Silverdale Cove	L. Houston	2.97	4x = tetraploid
L081	<i>Sorbus lancastriensis</i>	Silverdale Cove	L. Houston	3.03	4x = tetraploid
L082	<i>Sorbus lancastriensis</i>	Scout Scar	L. Houston	2.979	4x = tetraploid
L083	<i>Sorbus lancastriensis</i>	Scout Scar	L. Houston	2.981	4x = tetraploid
L084	<i>Sorbus lancastriensis</i>	Scout Scar	L. Houston	2.984	4x = tetraploid
L085	<i>Sorbus lancastriensis</i>	Humphrey Head	L. Houston	2.992	4x = tetraploid
L086	<i>Sorbus lancastriensis</i>	Humphrey Head	L. Houston	3.03	4x = tetraploid
L087	<i>Sorbus lancastriensis</i>	Humphrey Head	L. Houston	3.062	4x = tetraploid
L088	<i>Sorbus lancastriensis</i>	Humphrey Head	L. Houston T. C. G. Rich, L. Houston, S.	2.9801	4x = tetraploid
FC013	<i>Sorbus latifolia</i>	Stokeleigh Camp	Ludwig, I. Trotman	3.143	4x = tetraploid
FC177	<i>Sorbus leptophylla</i>	Craig y Cilau NNR	T. C. G. Rich	3.030	4x = tetraploid
FC181	<i>Sorbus leptophylla</i>	Craig y Cilau NNR	T. C. G. Rich	2.991	4x = tetraploid
FC182	<i>Sorbus leptophylla</i>	Craig y Cilau NNR	T. C. G. Rich	3.008	4x = tetraploid
FC184	<i>Sorbus leptophylla</i>	Craig y Cilau NNR	T. C. G. Rich	2.937	4x = tetraploid
FC187	<i>Sorbus leptophylla</i>	Craig y Cilau NNR	T. C. G. Rich	3.070	4x = tetraploid

FC195	<i>Sorbus leyana</i>	Penmoelallt	T. C. G. Rich	2.280	3x = triploid
FC198	<i>Sorbus leyana</i>	Penmoelallt	T. C. G. Rich	2.267	3x = triploid
FC202	<i>Sorbus leyana</i>	Penmoelallt	T. C. G. Rich	2.247	3x = triploid
FC204	<i>Sorbus leyana</i>	Penmoelallt	T. C. G. Rich	2.265	3x = triploid
FC313	<i>Sorbus margaretae</i>	Neck Wood, Trentishoe	T. Rich & S. Whild	3.026	4x = tetraploid
FC322	<i>Sorbus margaretae</i>	Neck Wood, Trentishoe	T. Rich & S. Whild	2.995	4x = tetraploid
FC333	<i>Sorbus margaretae</i>	Woody Bay	T. Rich	3.084	4x = tetraploid
FC345	<i>Sorbus margaretae</i>	Glenthorne	T. Rich & S. Whild	2.99	4x = tetraploid
FC347	<i>Sorbus margaretae</i>	Culbone	T. Rich	2.991	4x = tetraploid
FC348	<i>Sorbus margaretae</i>	Culbone	T. Rich	3	4x = tetraploid
FC165	<i>Sorbus minima</i>	Craig y Castell	T. C. G. Rich	2.270	3x = triploid
FC169	<i>Sorbus minima</i>	Craig y Cilau NNR	T. C. G. Rich	2.296	3x = triploid
FC172	<i>Sorbus minima</i>	Craig y Cilau NNR	T. C. G. Rich	2.276	3x = triploid
FC183	<i>Sorbus minima</i>	Craig y Cilau NNR	T. C. G. Rich	2.258	3x = triploid
FC380	<i>Sorbus mougeotii</i>	France. Bornes Aravis 1500 m. Switzerland. Betlahstock, 47°13'N, 7°25'E, about 1100 m elevation, in the Jura mountains.	M. Christenhusz	2.984	4x = tetraploid
FC381	<i>Sorbus mougeotii</i>		M. Christenhusz	2.961	4x = tetraploid
FC6482	<i>Sorbus mougeotii</i>	Col de la Pierre St Martin, Spain	M. J. M. Christenhusz, M. Chase & M. Fay	3.072	4x = tetraploid
FC6483	<i>Sorbus mougeotii</i>	Col de la Pierre St Martin, Spain	M. J. M. Christenhusz, M. Chase & M. Fay	3.022	4x = tetraploid
FC6484	<i>Sorbus mougeotii</i>	Col de la Pierre St Martin, Spain	M. J. M. Christenhusz, M. Chase & M. Fay	3.055	4x = tetraploid
FC008	<i>Sorbus not aria</i>	The Gully, Clifton	T. C. G. Rich, L. Houston, S. Ludwig, I. Trotman	2.284	3x = triploid
FC083	<i>Sorbus not aria</i>	Seven Sisters, middle outcrop	M. Fay, J. P. Moscardo, S. Clermont, T. Rich	2.286	3x = triploid
FC094	<i>Sorbus not aria</i>	Seven Sisters, cliff edge before main outcrop	M. Fay, J. P. Moscardo, S. Clermont, T. Rich	2.268	3x = triploid
FC095	<i>Sorbus not aria</i>	Seven Sisters, cliff edge before main outcrop	M. Fay, J. P. Moscardo, S. Clermont, T. Rich	2.294	3x = triploid
FC104	<i>Sorbus not aria</i>	Seven Sisters, main outcrop	M. Fay, J. P. Moscardo, S. Clermont, T. Rich	2.252	3x = triploid

FC111	Sorbus not aria	Seven Sisters, east of main outcrop	M. Fay, J. P. Moscardo, S. Clermont, T. Rich	2.266	3x = triploid
FC114	Sorbus not aria	Seven Sisters, east of main outcrop	M. Fay, J. P. Moscardo, S. Clermont, T. Rich	2.266	3x = triploid
FC118	Sorbus not aria	Seven Sisters, east of main outcrop	M. Fay, J. P. Moscardo, S. Clermont, T. Rich	2.252	3x = triploid
FC359	Sorbus not aria	Shorn Cliff	T. Rich & L. Houston	2.224	3x = triploid
FC360	Sorbus not aria	Woodcroft Quarry	T. Rich & L. Houston	2.251	3x = triploid
FC363	Sorbus not aria	Woodcroft Quarry	T. Rich & L. Houston	2.276	3x = triploid
L045	Sorbus not aria	Jack's Hole, Clifton	L. Houston	2.27	3x = triploid
L072	Sorbus not aria	Cheddar Gorge S side, Gough's Cliffs, E	L. Houston	2.252	3x = triploid
L142	Sorbus not aria	Burrington Combe	L. Houston	2.346	3x = triploid
L015	Sorbus not eminens	Cheddar, N side (NT reserve), Horseshoe Bend	L. Houston	2.236	3x = triploid
L067	Sorbus not eminens	Cheddar Gorge S side, coach park slopes	L. Houston	2.31	3x = triploid
FC105	Sorbus not eminentiformis	Seven Sisters, main outcrop	M. Fay, J. P. Moscardo, S. Clermont, T. Rich	2.289	3x = triploid
FC113	Sorbus not eminentiformis	Seven Sisters, east of main outcrop	M. Fay, J. P. Moscardo, S. Clermont, T. Rich	2.272	3x = triploid
FC140	Sorbus not parviloba	Coldwell Rocks, rock west of Ship Rock	M. Fay, J. P. Moscardo, S. Clermont, T. Rich	2.244	3x = triploid
FC143	Sorbus not parviloba	Coldwell Rocks, near Ship Rock	M. Fay, J. P. Moscardo, S. Clermont, T. Rich	2.251	3x = triploid
L023	Sorbus Observatory Hill taxon	Observatory Hill, Clifton	L. Houston	2.286	3x = triploid
L024	Sorbus Observatory Hill taxon	Observatory Hill, Clifton	L. Houston	2.261	3x = triploid
L025	Sorbus Observatory Hill taxon	Observatory Hill, Clifton	L. Houston	2.254	3x = triploid
L026	Sorbus Observatory Hill taxon	Observatory Hill, Clifton	L. Houston	2.27	3x = triploid
L027	Sorbus Observatory Hill taxon	Observatory Hill, Clifton	L. Houston	2.25	3x = triploid
L031	Sorbus Observatory Hill taxon	Observatory Hill, Clifton	L. Houston	2.234	3x = triploid

L034	Sorbus Observatory Hill taxon	Observatory Hill, Clifton	L. Houston	2.224	3x = triploid
L075	Sorbus one-off form	Cheddar Gorge S side, Gough's Top, W	L. Houston	2.274	3x = triploid
L094	Sorbus one-off form	Cheddar Gorge S side, Gough's Cliffs W, 1st upper tier	L. Houston	3.003	4x = tetraploid
L131	Sorbus one-off form	Weston Big Wood: Valley Road	L. Houston	2.169	3x = triploid
L038	Sorbus one-off 'hedgehog'	Quarry 2, Leigh Woods	L. Houston	2.303	3x = triploid
L090	Sorbus one-off sharply lobed	Cheddar Gorge S side, Gough's Cliffs W, 1st upper tier	L. Houston	2.986	4x = tetraploid
FC147	Sorbus parviloba	Coldwell Rocks, Ship Rock	M. Fay, J. P. Moscardo, S. Clermont, T. Rich	3.011	4x = tetraploid
FC303	Sorbus porrigentiformis aggregate	details not traced (cultivated at NBGW)	T. C. G. Rich	3.011	4x = tetraploid
FC361	Sorbus porrigentiformis aggregate	Woodcroft Quarry	T. Rich & L. Houston	2.258	3x = triploid
FC364	Sorbus porrigentiformis aggregate	Woodcroft Quarry	T. Rich & L. Houston	2.273	3x = triploid
L091	Sorbus porrigentiformis aggregate	Cheddar Gorge S side, Gough's Cliffs W, 1st upper tier	L. Houston	2.252	3x = triploid
L093	Sorbus porrigentiformis aggregate	Cheddar Gorge S side, Gough's Cliffs W, 1st upper tier	L. Houston	3.011	4x = tetraploid
L115	Sorbus porrigentiformis aggregate	Cheddar Gorge, N (NT) side, Commoners' Spur	L. Houston	2.287	3x = triploid
L116	Sorbus porrigentiformis aggregate	Cheddar Gorge, N (NT) side, Commoners' Spur	L. Houston	3.001	4x = tetraploid
L124	Sorbus porrigentiformis aggregate	Blaise Estate, Goram's Chair	L. Houston	2.998	4x = tetraploid
L135	Sorbus	Burrington Combe	L. Houston	2.258	3x = triploid

	porrigentiformis aggregate Sorbus				
L136	porrigentiformis aggregate Sorbus	Burrington Combe	L. Houston	2.268	3x = triploid
L137	porrigentiformis aggregate Sorbus	Burrington Combe	L. Houston	3.037	4x = tetraploid
L138	porrigentiformis aggregate Sorbus	Burrington Combe	L. Houston	2.269	3x = triploid
L140	porrigentiformis aggregate Sorbus	Burrington Combe	L. Houston	2.281	3x = triploid
L141	porrigentiformis aggregate Sorbus	Burrington Combe	L. Houston	2.301	3x = triploid
L143	porrigentiformis aggregate Sorbus	Burrington Combe	L. Houston	2.245	3x = triploid
FC190	porrigentiformis form with narrow leaves Sorbus	Craig y Cilau NNR	T. C. G. Rich	3.807	5x = pentaploid
FC164	porrigentiformis sensu stricto Sorbus	Craig y Castell	T. C. G. Rich	2.974	4x = tetraploid
FC171	porrigentiformis sensu stricto Sorbus	Craig y Cilau NNR	T. C. G. Rich	3.031	4x = tetraploid
FC176	porrigentiformis sensu stricto Sorbus	Craig y Cilau NNR	T. C. G. Rich	3.056	4x = tetraploid
FC191	porrigentiformis sensu stricto Sorbus	Craig y Cilau NNR	T. C. G. Rich	2.967	4x = tetraploid
FC192	porrigentiformis sensu stricto	Craig y Cilau NNR	T. C. G. Rich	2.990	4x = tetraploid

FC207	Sorbus porrigentiformis sensu stricto	Castell Coch, below	T. C. G. Rich	2.955	4x = tetraploid
FC212	Sorbus porrigentiformis sensu stricto	Pwll-du Quarry, Govilon	T. C. G. Rich	3.016	4x = tetraploid
FC301	Sorbus porrigentiformis sensu stricto	Craig y Cilau, Llangattock (cultivated at NBGW)	T. C. G. Rich	3.01	4x = tetraploid
FC306	Sorbus porrigentiformis sensu stricto	Stokeleigh Camp, Leigh Woods, Bristol v.c.34 (cultivated at NBGW)	T. C. G. Rich	3.015	4x = tetraploid
FC335	Sorbus porrigentiformis sensu stricto	Fisherman's car park, Watersmeet	T. Rich & S. Whild	3.075	4x = tetraploid
L039	Sorbus porrigentiformis sensu stricto	Quarry 2, Leigh Woods	L. Houston	3.024	4x = tetraploid
L040	Sorbus porrigentiformis sensu stricto	Quarry 2, Leigh Woods	L. Houston	3.029	4x = tetraploid
L041	Sorbus porrigentiformis sensu stricto	Quarry 2, Leigh Woods	L. Houston	3.036	4x = tetraploid
L044	Sorbus porrigentiformis sensu stricto	Jack's Hole, Clifton	L. Houston	3.039	4x = tetraploid
L046	Sorbus porrigentiformis sensu stricto	Cheddar Gorge S side, Gough's Cliffs, Rock-sport spur	L. Houston	3.032	4x = tetraploid
L050	Sorbus porrigentiformis sensu stricto	Cheddar Gorge S side, Gough's Cliffs, N of Caves offices	L. Houston	3.04	4x = tetraploid
L069	Sorbus porrigentiformis sensu stricto	Cheddar Gorge S side, Gough's Cliffs, E	L. Houston	3.042	4x = tetraploid
L074	Sorbus porrigentiformis sensu stricto	Cheddar Gorge S side, Gough's Cliffs, E	L. Houston	2.994	4x = tetraploid

L077	Sorbus porrigentiformis sensu stricto	Cheddar Gorge S side, Gough's top, E	L. Houston	3.008	4x = tetraploid
L089	Sorbus porrigentiformis sensu stricto	Heale Ladder, Tom Tivey's Hole	L. Houston	3.03	4x = tetraploid
FC185	Sorbus porrigentiformis sensu stricto (Small leaved form?)	Craig y Cilau NNR	T. C. G. Rich	2.998	4x = tetraploid
FC188	Sorbus porrigentiformis sensu stricto (Small leaved form?)	Craig y Cilau NNR	T. C. G. Rich	3.065	4x = tetraploid
FC194	Sorbus porrigentiformis sensu stricto (Small leaved form?)	Craig y Cilau NNR	T. C. G. Rich	2.989	4x = tetraploid
FC088	Sorbus porrigentiformis Symonds Yat triploid clone	Seven Sisters, small hidden outcrop	M. Fay, J. P. Moscardo, S. Clermont, T. Rich	2.280	3x = triploid
FC090	Sorbus porrigentiformis Symonds Yat triploid clone	Seven Sisters, small hidden outcrop	M. Fay, J. P. Moscardo, S. Clermont, T. Rich	2.241	3x = triploid
FC099	Sorbus porrigentiformis Symonds Yat triploid clone	Seven Sisters, cliff edge before main outcrop	M. Fay, J. P. Moscardo, S. Clermont, T. Rich	2.285	3x = triploid
FC101	Sorbus porrigentiformis Symonds Yat triploid clone	Seven Sisters, cliff edge before main outcrop	M. Fay, J. P. Moscardo, S. Clermont, T. Rich	2.249	3x = triploid
FC115	Sorbus porrigentiformis Symonds Yat triploid clone	Seven Sisters, east of main outcrop	M. Fay, J. P. Moscardo, S. Clermont, T. Rich	2.259	3x = triploid

FC130	Sorbus porrigentiformis Symonds Yat triploid clone	Symonds Yat viewpoint by café	M. Fay, J. P. Moscardo, S. Clermont, T. Rich	2.263	3x = triploid
FC132	Sorbus porrigentiformis Symonds Yat triploid clone	Symonds Yat cleared viewpoint north of café	M. Fay, J. P. Moscardo, S. Clermont, T. Rich	2.249	3x = triploid
FC139	Sorbus porrigentiformis Symonds Yat triploid clone	Coldwell Rocks, rock west of Ship Rock	M. Fay, J. P. Moscardo, S. Clermont, T. Rich	2.269	3x = triploid
FC141	Sorbus porrigentiformis Symonds Yat triploid clone	Coldwell Rocks, rock west of Ship Rock	M. Fay, J. P. Moscardo, S. Clermont, T. Rich	2.271	3x = triploid
FC148	Sorbus porrigentiformis Symonds Yat triploid clone	Coldwell Rocks, Ship Rock	M. Fay, J. P. Moscardo, S. Clermont, T. Rich	2.259	3x = triploid
FC149	Sorbus porrigentiformis Symonds Yat triploid clone	Coldwell Rocks, Ship Rock	M. Fay, J. P. Moscardo, S. Clermont, T. Rich	2.266	3x = triploid
FC025	Sorbus Portishead taxon	Kilkenny Bay, Portishead	L. Houston, M. Fay, J. P. Moscardo, S. Clermont, T. Rich	3.009	4x = tetraploid
FC026	Sorbus Portishead taxon	Kilkenny Bay, Portishead	L. Houston, M. Fay, J. P. Moscardo, S. Clermont, T. Rich	3.008	4x = tetraploid
FC027	Sorbus Portishead taxon	Kilkenny Bay, Portishead	L. Houston, M. Fay, J. P. Moscardo, S. Clermont, T. Rich	3.003	4x = tetraploid
FC029	Sorbus Portishead taxon	Kilkenny Bay, Portishead	L. Houston, M. Fay, J. P. Moscardo, S. Clermont, T. Rich	3.011	4x = tetraploid
FC030	Sorbus Portishead taxon	Kilkenny Bay, Portishead	L. Houston, M. Fay, J. P. Moscardo, S. Clermont, T. Rich	3.044	4x = tetraploid

FC031	Sorbus Portishead taxon	Kilkenny Bay, Portishead	L. Houston, M. Fay, J. P. Moscardo, S. Clermont, T. Rich	3.031	4x = tetraploid
FC032	Sorbus Portishead taxon	Kilkenny Bay, Portishead	L. Houston, M. Fay, J. P. Moscardo, S. Clermont, T. Rich	3.028	4x = tetraploid
FC033	Sorbus Portishead taxon	Kilkenny Bay, Portishead	L. Houston, M. Fay, J. P. Moscardo, S. Clermont, T. Rich	2.994	4x = tetraploid
FC034	Sorbus Portishead taxon	Kilkenny Bay, Portishead	L. Houston, M. Fay, J. P. Moscardo, S. Clermont, T. Rich	2.973	4x = tetraploid
FC035	Sorbus Portishead taxon	Redcliff Bay, Portishead	L. Houston, M. Fay, J. P. Moscardo, S. Clermont, T. Rich	3.043	4x = tetraploid
FC036	Sorbus Portishead taxon	Redcliff Bay, Portishead	L. Houston, M. Fay, J. P. Moscardo, S. Clermont, T. Rich	3.011	4x = tetraploid
FC037	Sorbus Portishead taxon	Redcliff Bay, Portishead	L. Houston, M. Fay, J. P. Moscardo, S. Clermont, T. Rich	2.998	4x = tetraploid
FC040	Sorbus Portishead taxon	Church Hill, Clevedon	L. Houston, M. Fay, J. P. Moscardo, S. Clermont, T. Rich	3.016	4x = tetraploid
FC041	Sorbus Portishead taxon	Church Hill, Clevedon	L. Houston, M. Fay, J. P. Moscardo, S. Clermont, T. Rich	3.008	4x = tetraploid
FC042	Sorbus Portishead taxon	Church Hill, Clevedon	L. Houston, M. Fay, J. P. Moscardo, S. Clermont, T. Rich	3.059	4x = tetraploid
FC043	Sorbus Portishead taxon	Church Hill, Clevedon	L. Houston, M. Fay, J. P. Moscardo, S. Clermont, T. Rich	3.081	4x = tetraploid
FC044	Sorbus Portishead taxon	Church Hill, Clevedon	L. Houston, M. Fay, J. P. Moscardo, S. Clermont, T. Rich	2.963	4x = tetraploid
FC045	Sorbus Portishead taxon	Church Hill, Clevedon	L. Houston, M. Fay, J. P. Moscardo, S. Clermont, T. Rich	3.032	4x = tetraploid

FC064	<i>Sorbus Portishead</i> taxon	East Wood, Portishead	L. Houston, M. Fay, J. P. Moscardo, S. Clermont, T. Rich	3.000	4x = tetraploid
FC386	<i>Sorbus prattii</i>	unknown	M. Christenhusz	3.035	4x = tetraploid
FC102	<i>Sorbus rupicola</i>	Seven Sisters, main outcrop tip	M. Fay, J. P. Moscardo, S. Clermont, T. Rich	3.041	4x = tetraploid
FC106	<i>Sorbus rupicola</i>	Seven Sisters, main outcrop north side	M. Fay, J. P. Moscardo, S. Clermont, T. Rich	3.054	4x = tetraploid
FC168	<i>Sorbus rupicola</i>	Craig y Cilau NNR	T. C. G. Rich	3.081	4x = tetraploid
FC173	<i>Sorbus rupicola</i>	Craig y Cilau NNR	T. C. G. Rich	3.097	4x = tetraploid
FC174	<i>Sorbus rupicola</i>	Craig y Cilau NNR	T. C. G. Rich	3.073	4x = tetraploid
FC197	<i>Sorbus rupicola</i>	Penmoelallt	T. C. G. Rich	3.091	4x = tetraploid
FC203	<i>Sorbus rupicola</i>	Penmoelallt	T. C. G. Rich	3.081	4x = tetraploid
FC205	<i>Sorbus rupicola</i>	Penmoelallt	T. C. G. Rich	3.093	4x = tetraploid
FC315	<i>Sorbus rupicola</i>	Neck Wood, Trentishoe	T. Rich & S. Whild	3.036	4x = tetraploid
FC320	<i>Sorbus rupicola</i>	Neck Wood, Trentishoe	T. Rich & S. Whild	3.036	4x = tetraploid
L053	<i>Sorbus rupicoloides</i>	Cheddar Gorge S side, Gough's Cliffs, above offices	L. Houston	3.049	4x = tetraploid
L059	<i>Sorbus rupicoloides</i>	Cheddar Gorge S side, Gough's Cliffs, above Caves complex	L. Houston	2.996	4x = tetraploid
L061	<i>Sorbus rupicoloides</i>	Cheddar Gorge S side, Gough's Cliffs, above Caves complex	L. Houston	2.995	4x = tetraploid
FC390	<i>Sorbus sambucifolia</i>	Japan. Hokkaido, Rumoi District. Teshio Experimental Forest of Hokkaido University, Mukaihassen 12	M. Christenhusz	1.565	2x = diploid
FC078	<i>Sorbus saxicola</i>	Lords Wood, Great Doward	M. Fay, J. P. Moscardo, S. Clermont, T. Rich	2.247	3x = triploid
FC079	<i>Sorbus saxicola</i>	King Arthurs Cave, Lords Wood, Great Doward	M. Fay, J. P. Moscardo, S. Clermont, T. Rich	2.252	3x = triploid
FC129	<i>Sorbus saxicola</i>	Symonds Yat viewpoint by café	M. Fay, J. P. Moscardo, S. Clermont, T. Rich	2.243	3x = triploid
FC374	<i>Sorbus sibirica</i>	Russia. Sakha Republic (Yakutia), near Yakutsk	M. Christenhusz	2.882	4x = tetraploid
FC213	<i>Sorbus stenophylla</i>	Pwll-du Quarry, Govilon	T. C. G. Rich	3.693	5x = pentaploid

FC214	<i>Sorbus stenophylla</i>	Pwll-du Quarry, Govilon	T. C. G. Rich	3.73	5x = pentaploid
FC215	<i>Sorbus stenophylla</i>	Pwll-du Quarry, Govilon	T. C. G. Rich	3.704	5x = pentaploid
FC391	<i>Sorbus stenophylla</i>	Darren Lwyd	T. C. G. Rich	3.702	5x = pentaploid
FC392	<i>Sorbus stenophylla</i>	Darren Lwyd	T. C. G. Rich	3.653	5x = pentaploid
FC321	<i>Sorbus subcuneata</i>	Neck Wood, Trentishoe	T. Rich & S. Whild	2.329	3x = triploid
FC323	<i>Sorbus subcuneata</i>	Neck Wood, Trentishoe	T. Rich & S. Whild	2.317	3x = triploid
FC324	<i>Sorbus subcuneata</i>	Invention Wood, Hunter's Inn, track	T. Rich & S. Whild	2.346	3x = triploid
FC328	<i>Sorbus subcuneata</i>	Woody Bay	T. Rich & S. Whild	2.34	3x = triploid
FC332	<i>Sorbus subcuneata</i>	Woody Bay	T. Rich	2.359	3x = triploid
FC334	<i>Sorbus subcuneata</i>	Woody Bay	T. Rich	2.363	3x = triploid
FC337	<i>Sorbus subcuneata</i>	Fisherman's car park, Watersmeet	T. Rich & S. Whild	2.368	3x = triploid
FC341	<i>Sorbus subcuneata</i>	Watersmeet	T. Rich & S. Whild	2.368	3x = triploid
FC342	<i>Sorbus subcuneata</i>	Watersmeet	T. Rich & S. Whild	2.363	3x = triploid
FC344	<i>Sorbus subcuneata</i>	Watersmeet	T. Rich & S. Whild	2.363	3x = triploid
FC346	<i>Sorbus subcuneata</i>	Culbone	T. Rich	2.37	3x = triploid
FC349	<i>Sorbus subcuneata</i>	Minehead, Church Road	T. Rich & S. Whild	2.275	3x = triploid
FC134	<i>Sorbus tomentella</i> or <i>croceocarpa</i>	Yat Rock	M. Fay, J. P. Moscardo, S. Clermont, T. Rich	3.076	4x = tetraploid
FC089	<i>Sorbus tomentella-aria</i> backcross	Seven Sisters, small hidden outcrop	M. Fay, J. P. Moscardo, S. Clermont, T. Rich	2.234	3x = triploid
FC091	<i>Sorbus tomentella-aria</i> backcross	Seven Sisters, small hidden outcrop	M. Fay, J. P. Moscardo, S. Clermont, T. Rich	2.270	3x = triploid
FC122	<i>Sorbus tomentella-aria</i> backcross	Symonds Yat, west side	M. Fay, J. P. Moscardo, S. Clermont, T. Rich	2.266	3x = triploid
FC124	<i>Sorbus tomentella-aria</i> backcross	Symonds Yat, west side	M. Fay, J. P. Moscardo, S. Clermont, T. Rich	2.254	3x = triploid
FC126	<i>Sorbus tomentella-aria</i> backcross	Symonds Yat, west side	M. Fay, J. P. Moscardo, S. Clermont, T. Rich	2.265	3x = triploid
FC127	<i>Sorbus tomentella-aria</i> backcross	Symonds Yat, west side	M. Fay, J. P. Moscardo, S. Clermont, T. Rich	2.246	3x = triploid
FC136	<i>Sorbus tomentella-aria</i> backcross	Symonds Yat, east side	M. Fay, J. P. Moscardo, S. Clermont, T. Rich	2.258	3x = triploid
FC065	<i>Sorbus torminalis</i>	East Wood, Portishead	L. Houston, M. Fay, J. P. Moscardo, S. Clermont, T.	1.616	2x = diploid

			Rich		
FC068	<i>Sorbus torminalis</i>	East Wood, Portishead	L. Houston, M. Fay, J. P. Moscardo, S. Clermont, T. Rich	1.595	2x = diploid
FC075	<i>Sorbus torminalis</i>	Lords Wood, Great Doward	M. Fay, J. P. Moscardo, S. Clermont, T. Rich	1.607	2x = diploid
FC076	<i>Sorbus torminalis</i>	Lords Wood, Great Doward	M. Fay, J. P. Moscardo, S. Clermont, T. Rich	1.614	2x = diploid
FC077	<i>Sorbus torminalis</i>	Lords Wood, Great Doward	M. Fay, J. P. Moscardo, S. Clermont, T. Rich	1.614	2x = diploid
FC080	<i>Sorbus torminalis</i>	Seven Sisters, northern outcrop	M. Fay, J. P. Moscardo, S. Clermont, T. Rich	1.595	2x = diploid
FC087	<i>Sorbus torminalis</i>	Seven Sisters, behind middle outcrop	M. Fay, J. P. Moscardo, S. Clermont, T. Rich	1.609	2x = diploid
FC096	<i>Sorbus torminalis</i>	Seven Sisters, cliff edge before main outcrop	M. Fay, J. P. Moscardo, S. Clermont, T. Rich	1.625	2x = diploid
FC117	<i>Sorbus torminalis</i>	Seven Sisters, east of main outcrop	M. Fay, J. P. Moscardo, S. Clermont, T. Rich	1.597	2x = diploid
FC120	<i>Sorbus torminalis</i>	Symonds Yat, west side	M. Fay, J. P. Moscardo, S. Clermont, T. Rich	1.616	2x = diploid
FC144	<i>Sorbus torminalis</i>	Coldwell Rocks, near Ship Rock	M. Fay, J. P. Moscardo, S. Clermont, T. Rich	1.631	2x = diploid
FC153	<i>Sorbus torminalis</i>	Symonds Yat, car park	M. Fay, J. P. Moscardo, S. Clermont, T. Rich	1.605	2x = diploid
FC208	<i>Sorbus torminalis</i>	Castell Coch, below	T. C. G. Rich	1.628	2x = diploid
FC355	<i>Sorbus torminalis</i>	Offa's Dyke, Tidenham	T. Rich & L. Houston	1.614	2x = diploid
FC316	<i>Sorbus vexans</i>	Neck Wood, Trentishoe	T. Rich & S. Whild	3.012	4x = tetraploid
FC317	<i>Sorbus vexans</i>	Neck Wood, Trentishoe	T. Rich & S. Whild	2.994	4x = tetraploid
FC318	<i>Sorbus vexans</i>	Neck Wood, Trentishoe	T. Rich & S. Whild	3.013	4x = tetraploid
FC329	<i>Sorbus vexans</i>	Woody Bay	T. Rich & S. Whild	3.031	4x = tetraploid
FC336	<i>Sorbus vexans</i>	Fisherman's car park, Watersmeet	T. Rich & S. Whild	3.074	4x = tetraploid
FC003	<i>Sorbus wilmottiana</i>	The Gully, Clifton	T. C. G. Rich, L. Houston, S. Ludwig, I. Trotman	2.278	3x = triploid
L042	<i>Sorbus wilmottiana</i> or its hybrid	Quarry 4, Leigh Woods	L. Houston	2.275	3x = triploid
L037	<i>Sorbus x avonensis</i>	Avon Gorge, St Vincent's Rocks	L. Houston	2.294	3x = triploid

South, Clifton					
L133	<i>Sorbus x avonensis</i>	Avon Gorge, vc 6: Leigh Woods towpath	L. Houston	2.211	3x = triploid
L012	<i>Sorbus x houstoniae</i>	Leigh Woods, Stokeleigh Cliffs	L. Houston	3.072	4x = tetraploid
FC368	<i>Sorbus x liljeforsii</i>	Bradford, Powell Rd embankment	M. Wilcox	2.349	3x = triploid
FC199	<i>Sorbus x motleyi</i>	Penmoelallt	T. C. G. Rich	3.031	4x = tetraploid
FC200	<i>Sorbus x motleyi</i>	Penmoelallt	T. C. G. Rich	3.032	4x = tetraploid
FC201	<i>Sorbus x motleyi</i>	Penmoelallt	T. C. G. Rich	3.055	4x = tetraploid
L123	<i>Sorbus x robertsonii</i> (grafted)	Avon Gorge, Clifton side (University of Bristol Bot Gdn)	L. Houston T. C. G. Rich, L. Houston, S.	2.271	3x = triploid
FC001	<i>Sorbus x thuringiaca</i>	The Plain, Leigh Woods	Ludwig, I. Trotman	1.505	2x = diploid
FC367	<i>Sorbus x thuringiaca</i> nm pinnatifida	Bolton Wood Quarry, Bradford	M. Wilcox	3.104	4x = tetraploid
FC121	<i>Sorbus x tomentella</i>	Symonds Yat, west side	M. Fay, J. P. Moscardo, S. Clermont, T. Rich	1.560	2x = diploid
FC135	<i>Sorbus x tomentella</i>	Symonds Yat, east side	M. Fay, J. P. Moscardo, S. Clermont, T. Rich	1.542	2x = diploid
FC152	<i>Sorbus x tomentella</i>	Coldwell Rocks, Ship Rock	M. Fay, J. P. Moscardo, S. Clermont, T. Rich	1.556	2x = diploid
FC350	<i>Sorbus x tomentella</i>	Gorrashill Wood	T. Rich	1.551	2x = diploid