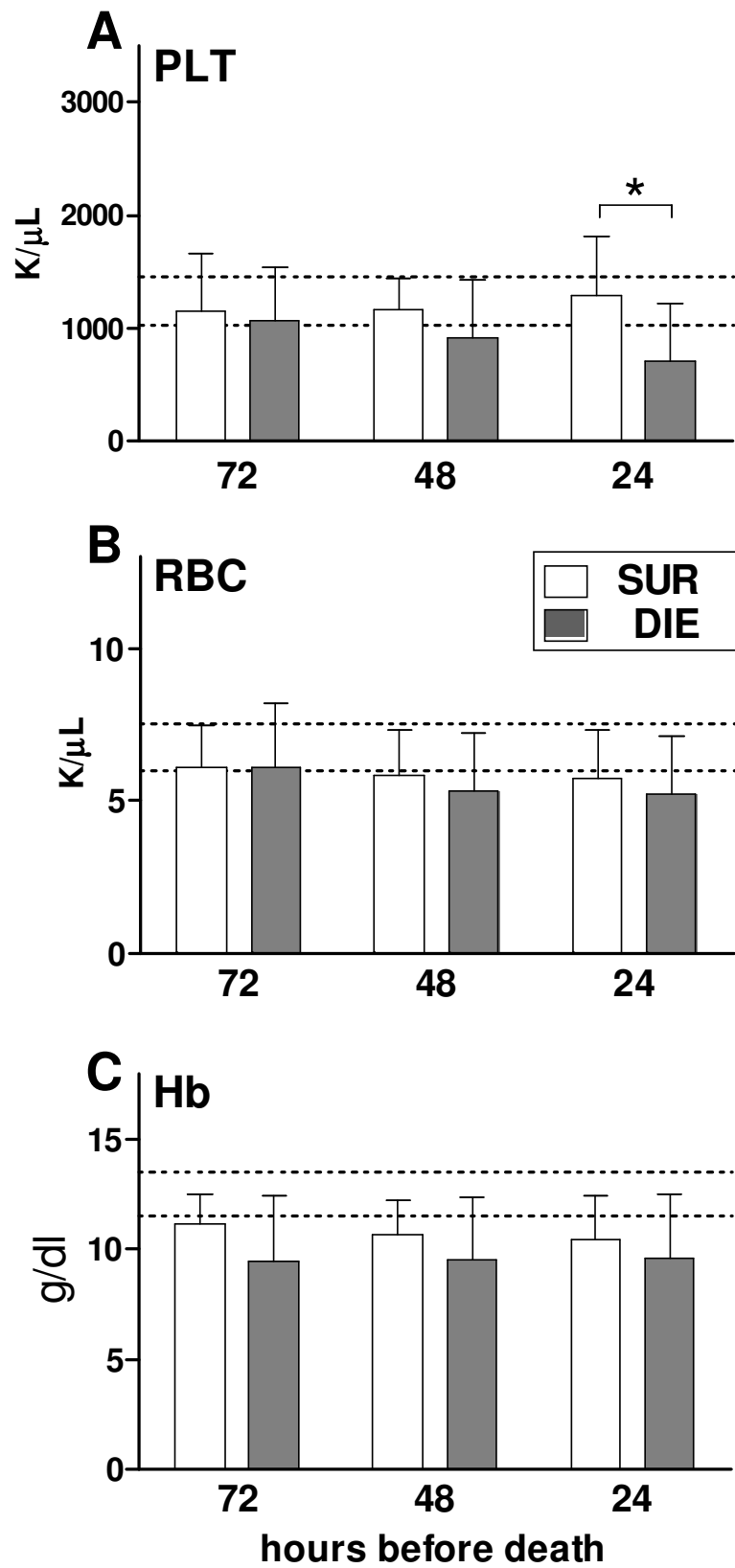


Supplementary Figure 2.



Supplementary Figure 2 - Legend:

Protracted profiles of hemoglobin concentration, red blood cell and platelet counts based on outcome during chronic CLP sepsis.

Daily blood samples were collected between days 6-28 post-CLP. The day of death (any day between 6-28 days) served as the reference point. DIE values were retrospectively plotted in the 72h, 48h and 24h prior-to-death trajectory and were time-matched with SUR values from the same post-CLP day (see study design). 2:1 SUR to DIE ratio at each time-point for each parameter: n= 20/10 (SUR/DIE) at 72h; n=30/15 at 48h and 24h. Data (bars) presented as mean + SD. Dotted lines indicate normal range. * p < 0.05