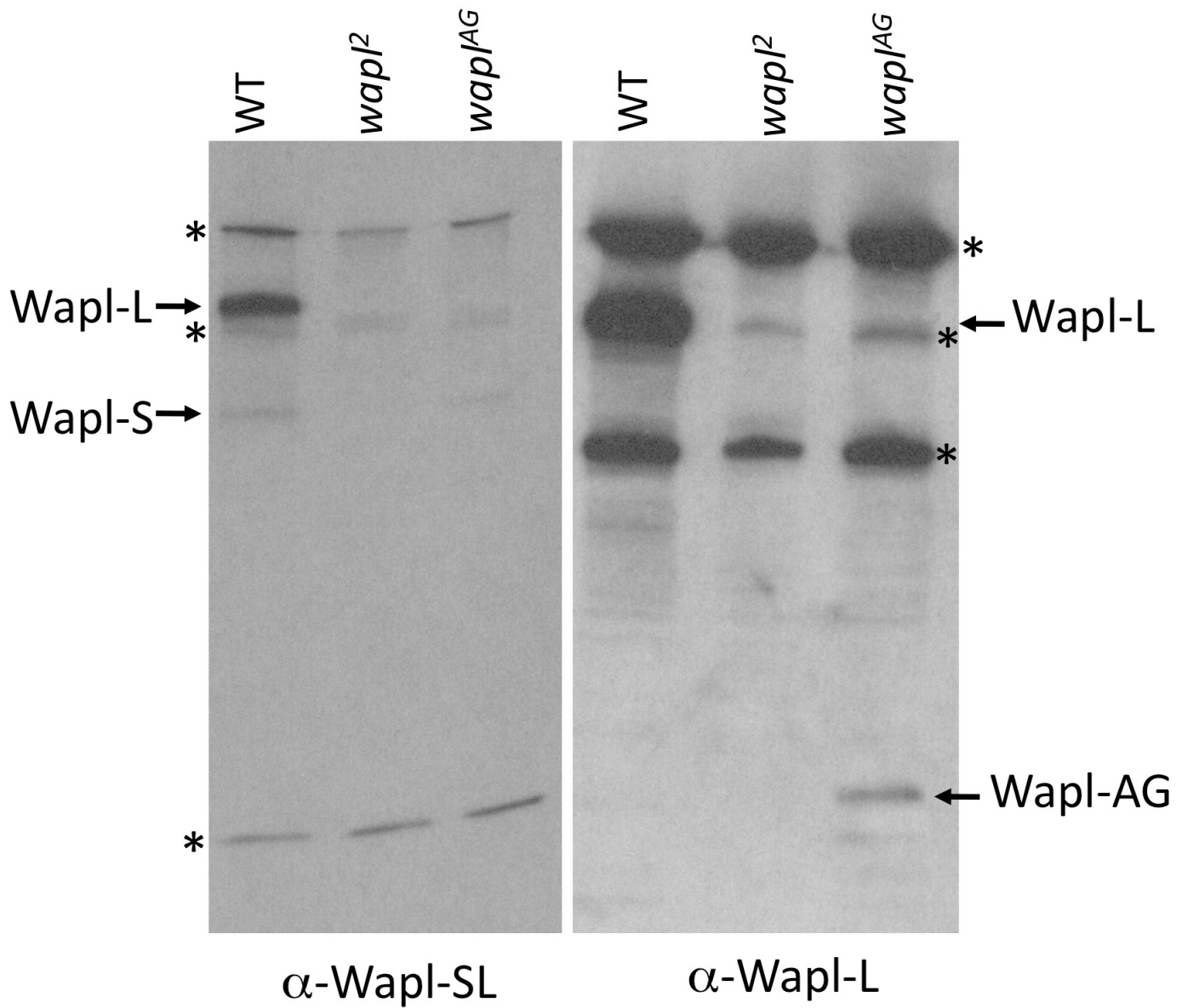


**Fig. S1. Wapl-SL antigen is not present in *wapl<sup>2</sup>* mutants.** Polytene chromosomes from wild-type (*wt*) and *wapl<sup>2</sup>* larvae were co-stained with  $\alpha$ -Wapl-SL (affinity-purified, 1:50, Red) and  $\alpha$ -Psc (monoclonal, 1:25, green). No Wapl-SL antigen is visible in *wapl<sup>2</sup>* mutants. Wapl and Psc largely do not colocalize. Similar results were obtained for the colocalization of Pc and Rad21 on polytene chromosomes (Strübbe et al., 2011).



**Fig. S2. Larval western blots with  $\alpha$ -Wapl-SL and  $\alpha$ -Wapl-L antisera.** Protein extracts from larvae of the genotypes wild type, *wapl*<sup>2</sup> and *wapl*<sup>AG</sup> were subjected to SDS-electrophoresis and western blotting and probed with either  $\alpha$ -Wapl-SL or  $\alpha$ -Wapl-L. Part of this  $\alpha$ -Wapl-SL blot is shown in Fig. 3C. Asterisks mark crossreacting bands.