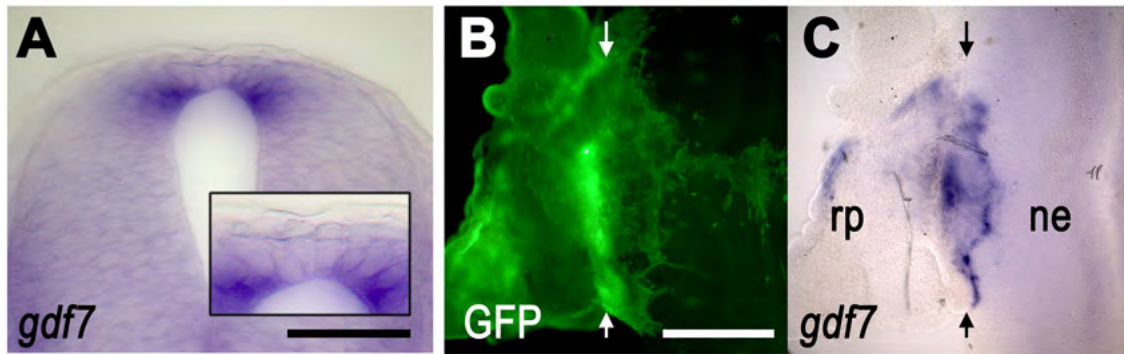


**Fig. S1. Overexpression by electroporation of gene constructs using *cdelta1* and *chairy2* was verified by in situ hybridisation.** (A,B) GFP-positive cells in the roof plate (A) also express (B) *cdelta1* (red) 48 hours after the co-electroporation of *pCAB-eGFPm5* with *RCAScdelta1*. (C) GFP-labelled cells in the neuroepithelium express high levels of *chairy2* 48 hours after electroporation of *chairy2:GFP*. Scale bars: 200  $\mu$ m in A,B; 600  $\mu$ m in C,D.



**Fig. S2. *gdf7* expression.** (A) The expression of *gdf7* (A) in the developing spinal cord of the chick is restricted to a paired dorsal domain either side of a central *gdf7*-negative strip of roof-plate cells (inset at high power is two to three cell diameters wide). (B,C) A 48-hour co-culture of GFP-labelled hindbrain roof plate with spinal cord neuroepithelium (B) results in the induction of *gdf7* in roof plate only where it abuts spinal cord (C). Arrows indicate contact between co-cultures in B and C. Scale bar: 100  $\mu\text{m}$  in A; 400  $\mu\text{m}$  in B,C.