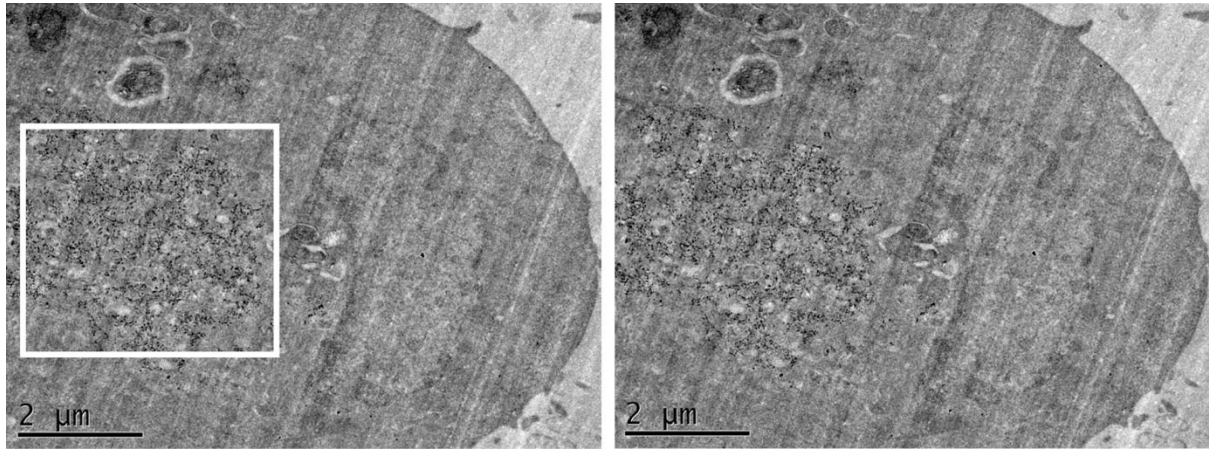


Mu Q et al

Additional File 1



TEM bright field images of an A549 cell after 24 h incubation at 37°C with 10 μg/ml amorphous silica nanoparticles (Figure 3 of the main text). The images are a stereo pair (angular separation of 6 degrees) taken from a tilt series demonstrating that the silica nanoparticles identified in Figure 3 and boxed above are located in the sectioned cell. A movie of this tilt series is also available in additional file 7.