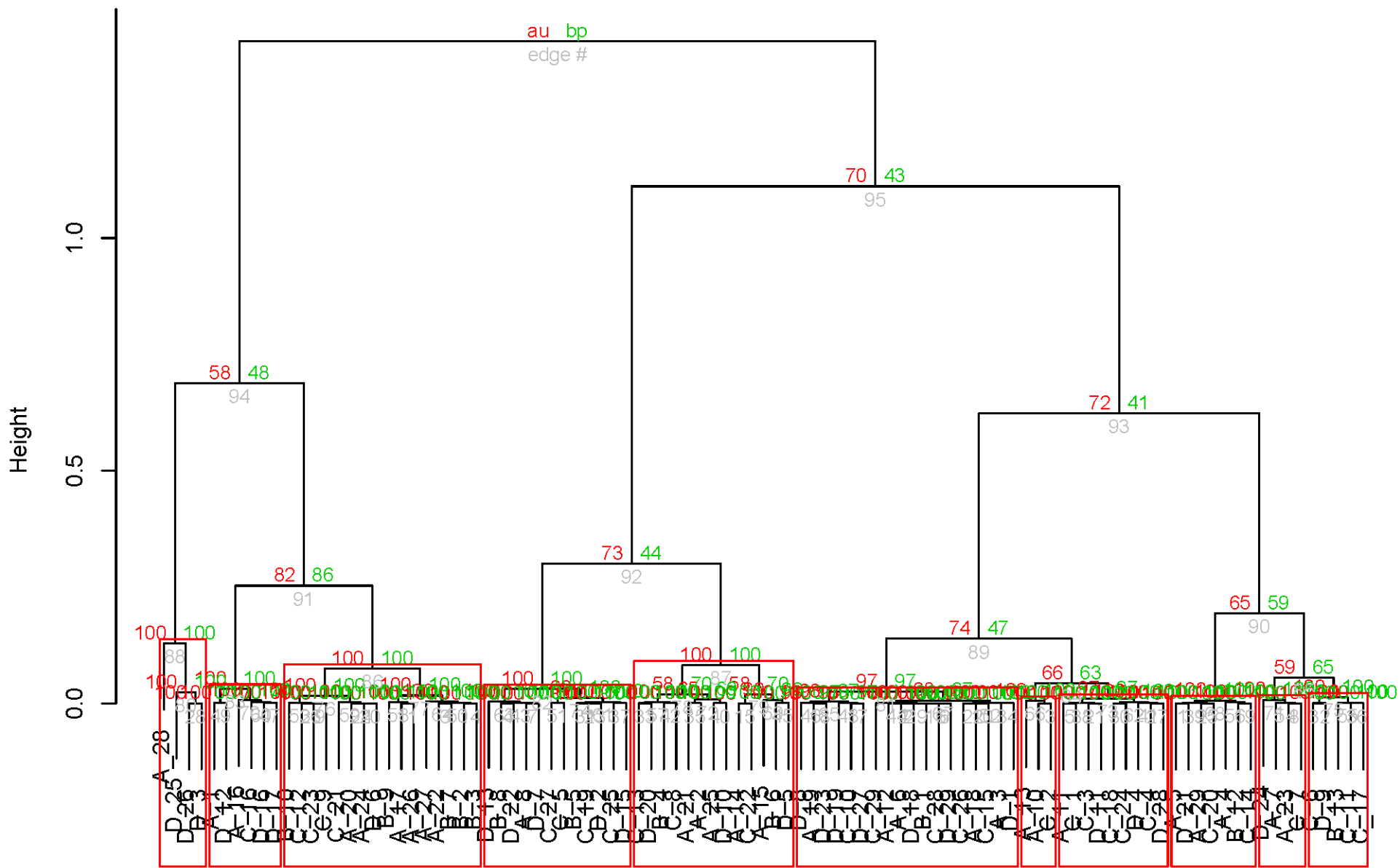


Additional File 1. Promoter methylation hierarchical clustering dendrogram



Hierarchical clustering dendrogram of methylation in gene promoters among four groups of AML patients. Clustering was performed with the R package pvclust. The feature threshold criteria were avg rpm > 10 and CV > 5. Values at branches represent multiscale bootstrapping calculated approximately unbiased (AU) p-values (red) and bootstrap p-values (green). Red boxes indicate cluster branches which meet the AU p-value threshold for significance. Cluster labels indicating group membership are shown below the branches.