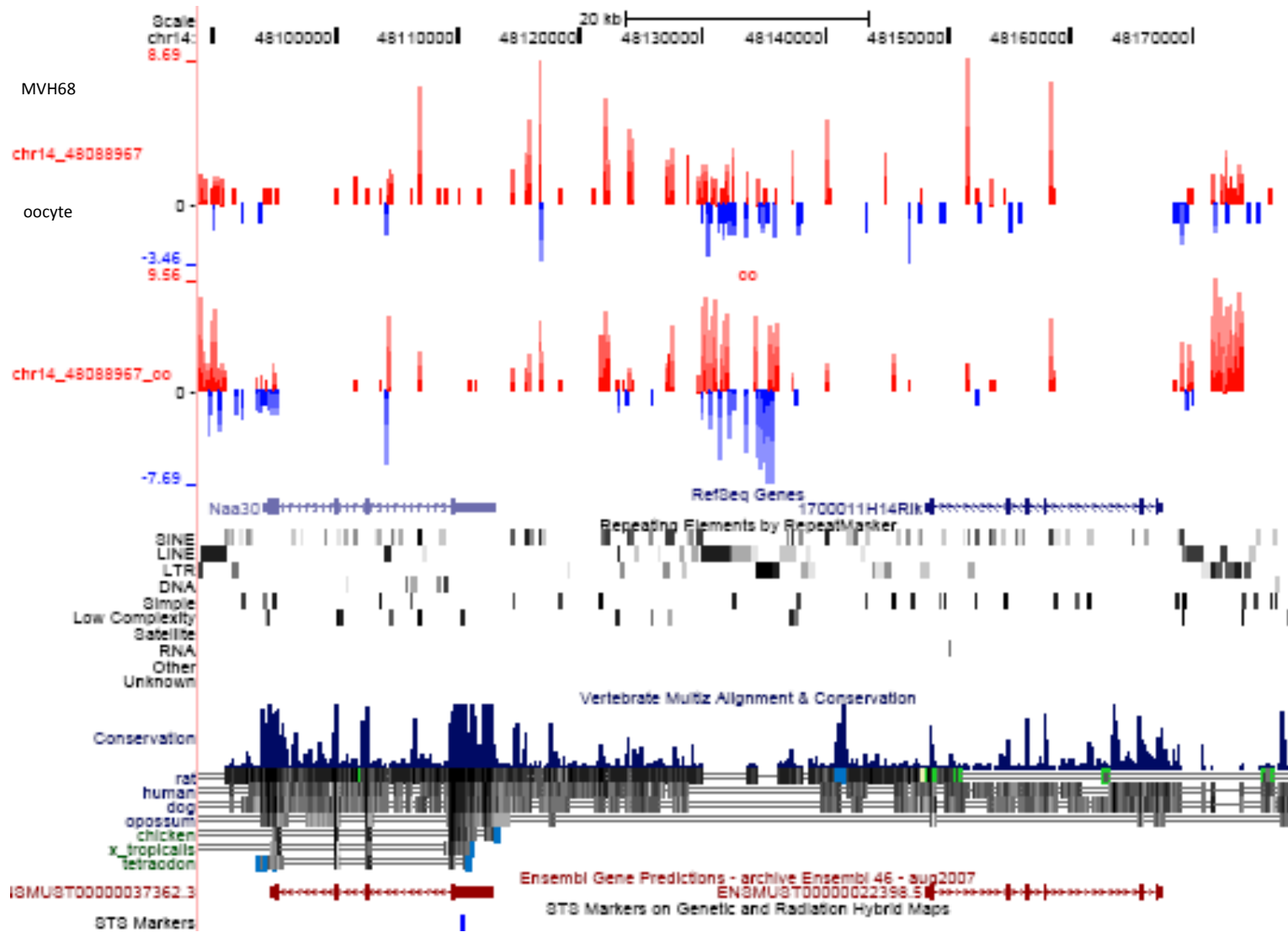
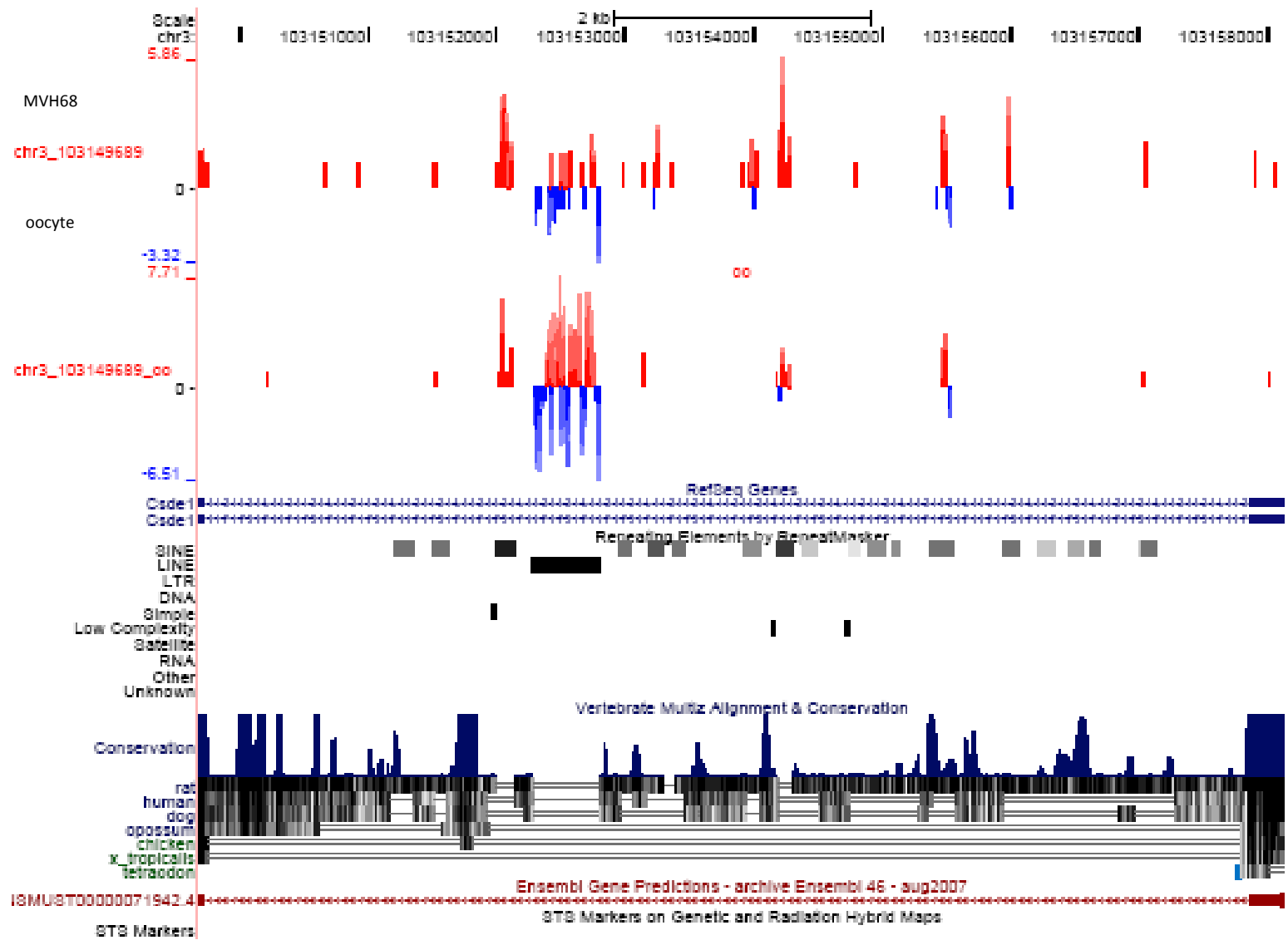


Supplemental Figure S7. Six of 17 previously annotated cis-NATs in the previous study²⁴ appeared in the current MHV68-infected data. All of the loci are based on UCSC mouse reference genome (version mm8). Mapping of reads and numbers of reads (log₂ based) in current data set (GSE36639) and in oocyte (GSM261957) are shown in the top two tracks. .RefSeq and Ensembl Gene annotations, repeat elements and conservation scores are shown (see UCSC genome browser for details of track information).

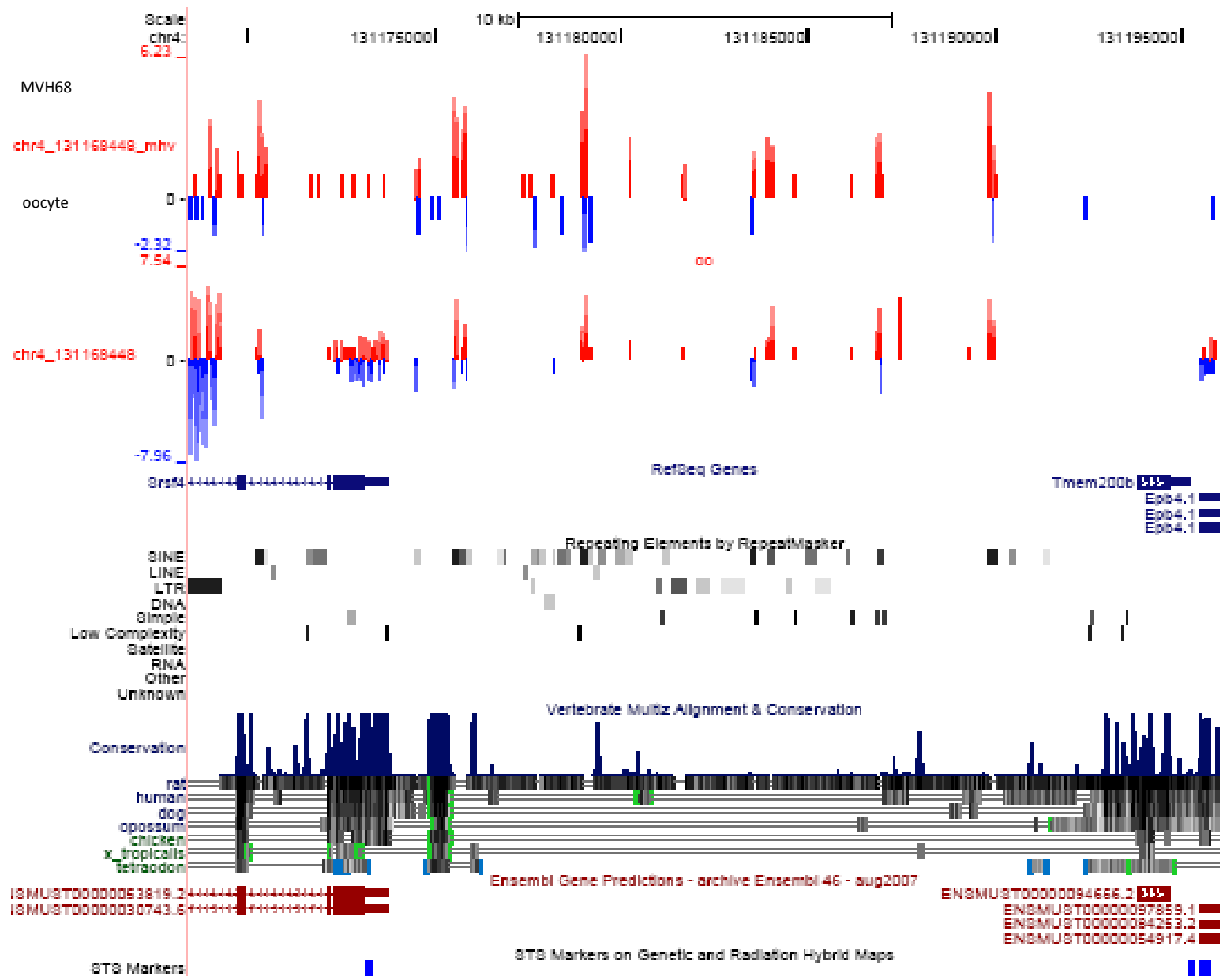
1. chr14_48088967_48178294



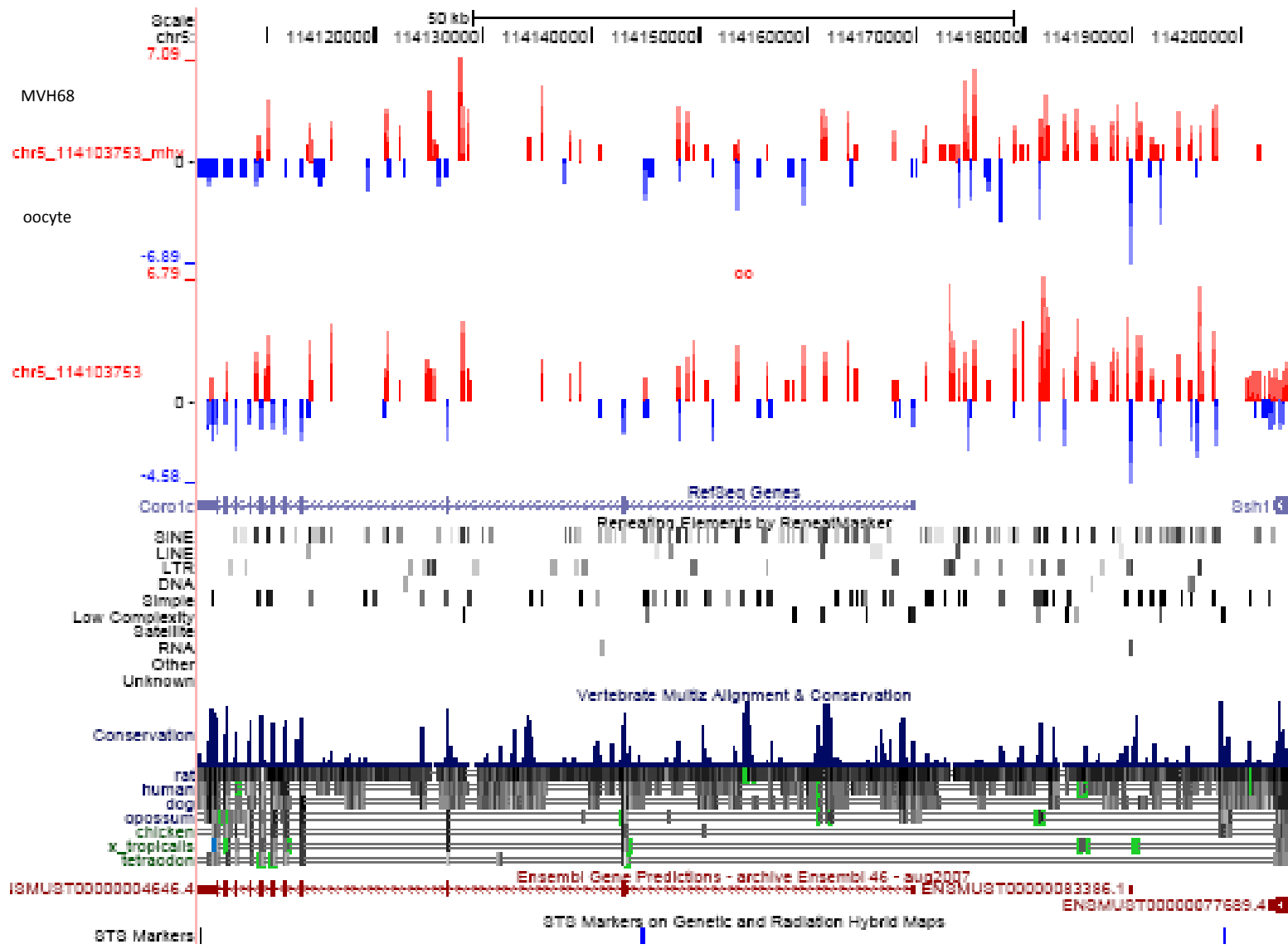
2. chr3_103149689_103158115



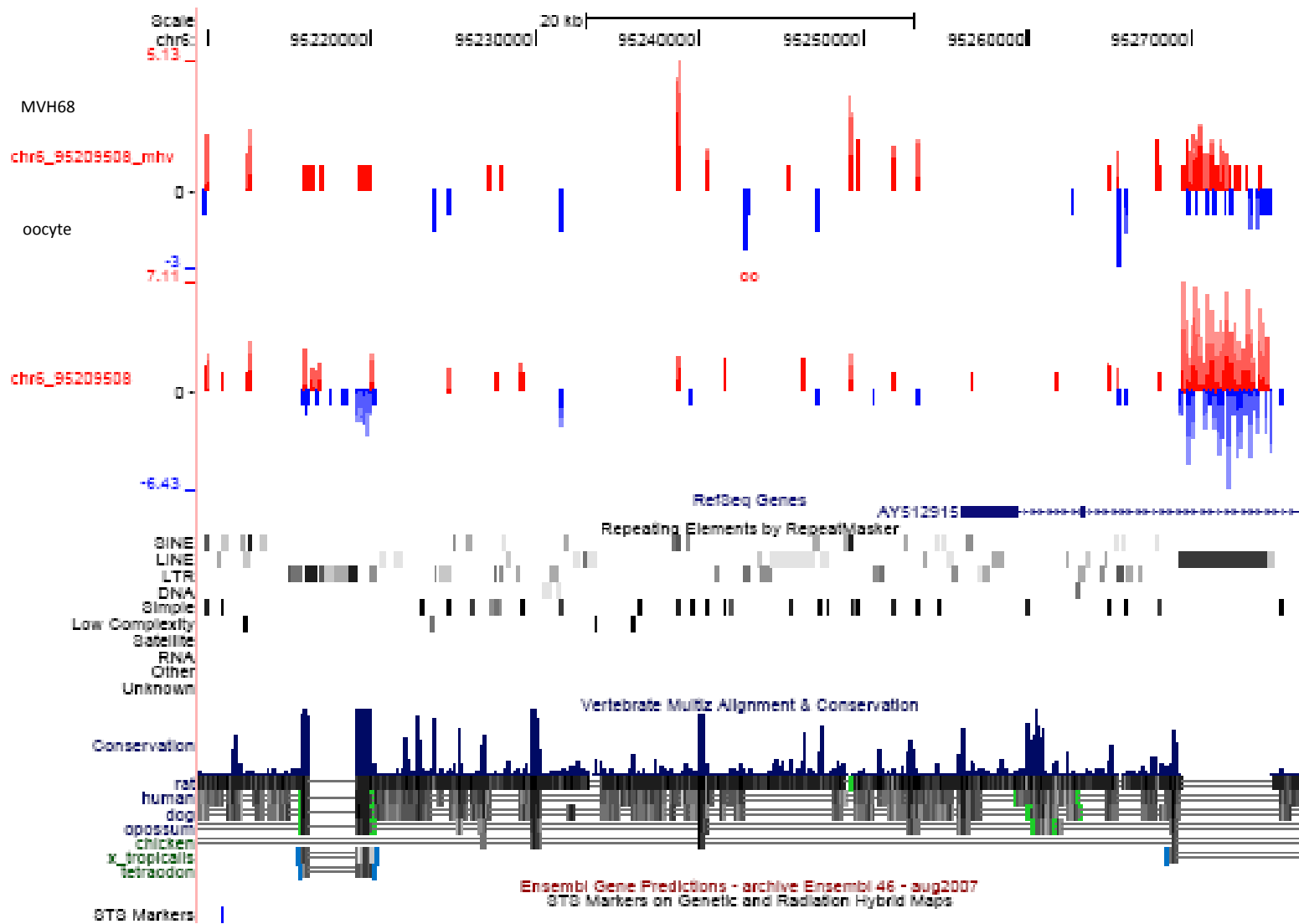
3. chr4:131168448-131195984



4. chr5_114103753_114204341



5. chr6_95209508_95276509



6. chr8_126304234_126307701

