

SUPPLEMENTAL FIGURE AND TABLE LEGENDS

Supplemental Figure 1: Example of immunohistochemistry with antibodies against PAX2, WNT4 and WT1.

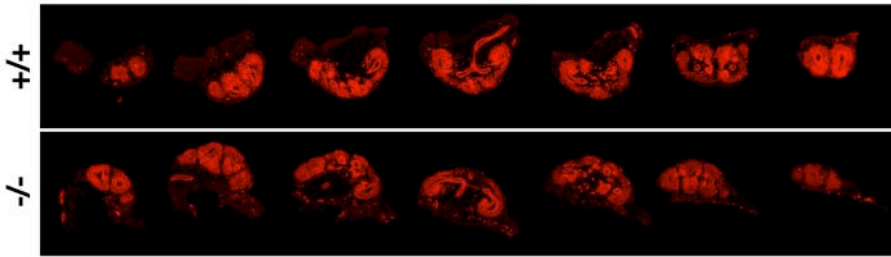
Presentation of one of the examples of immunohistochemistry in serial sections using antibodies against, PAX2, WNT4 and WT1, which are summarized at the bottom. (A) PAX2 (B) WNT4 (C) WT1. Genotypes and embryonic day are shown at the left and at the top, respectively.

Supplemental Table 1: Summary of immunohistochemistry using antibodies against PAX2, WNT4 and WT1.

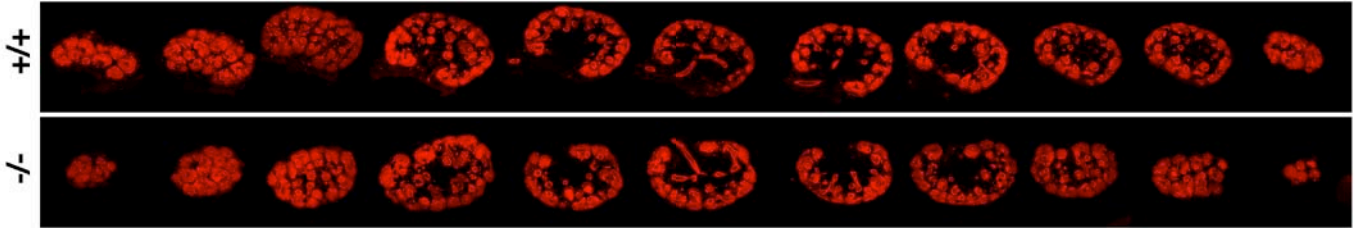
We isolated kidneys from the littermates and performed immunohistochemistry. Kidneys were sectioned, and immunohistochemistry was carried out using the given antibody. The total number of sections is shown at the bottom.

A Pax2

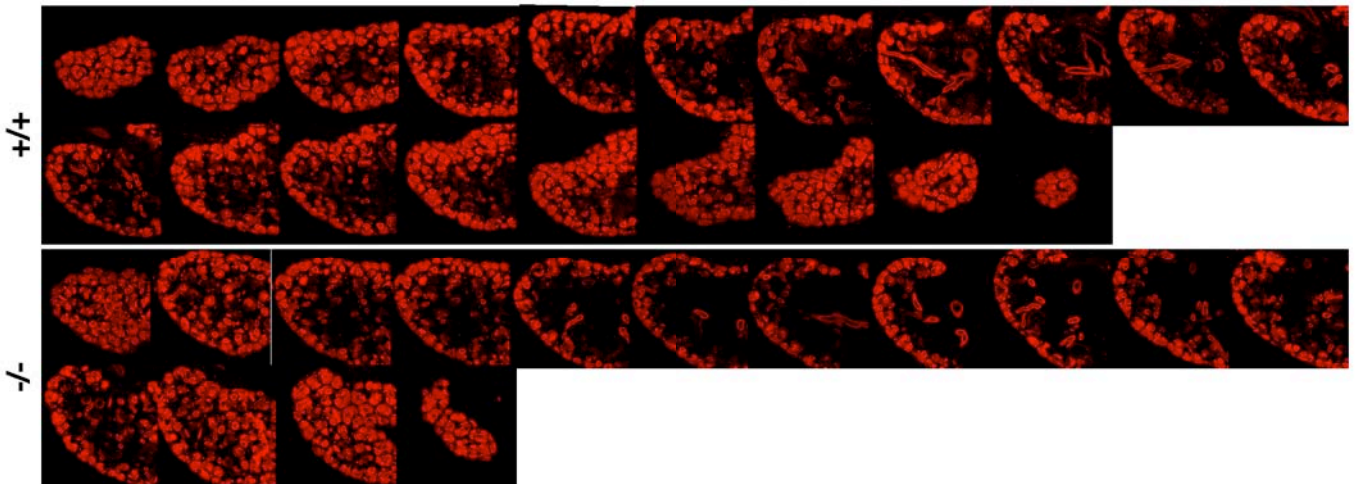
E12.5



E13.5

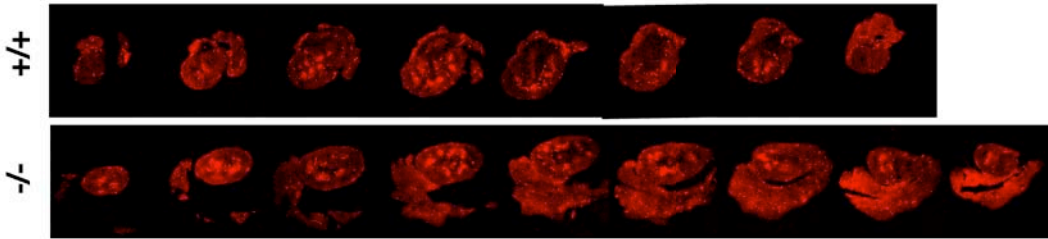


E14.5

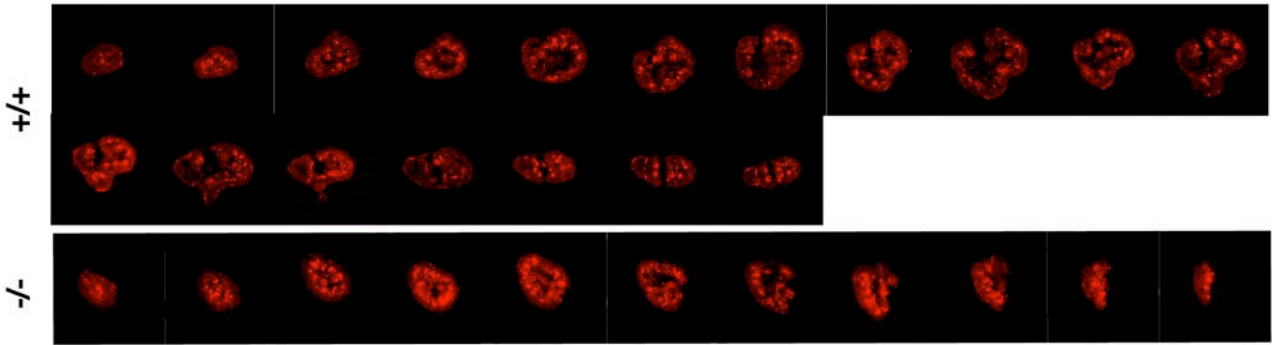


B Wnt4

E12.5

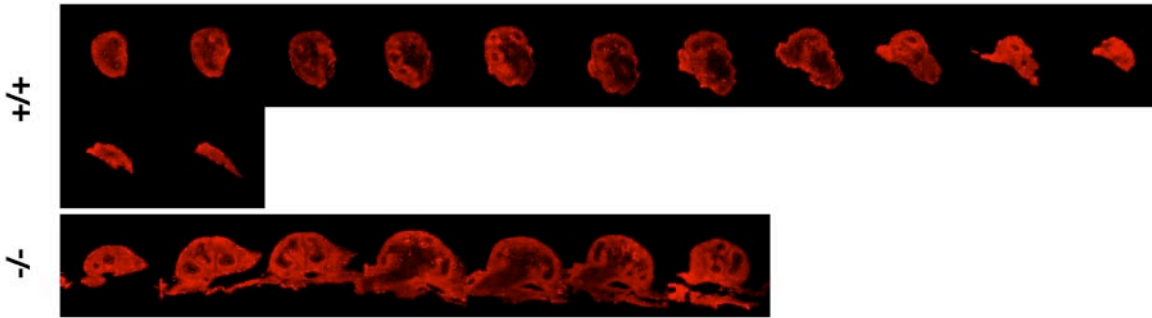


E13.5

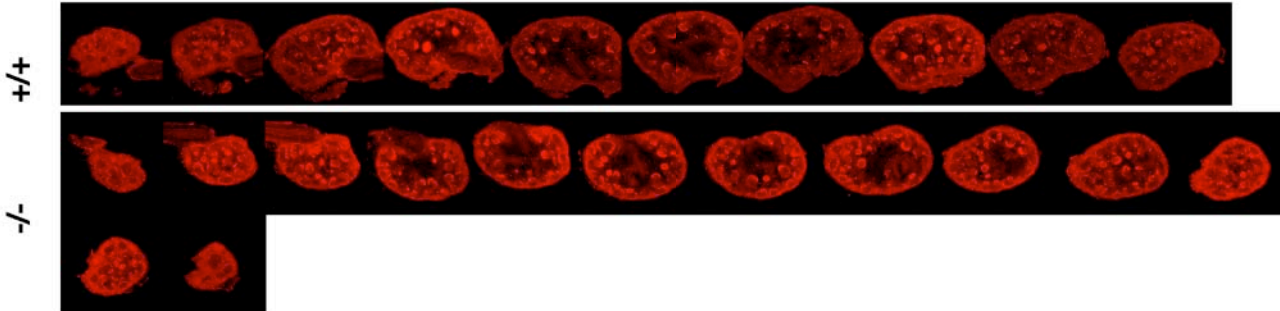


C WT1

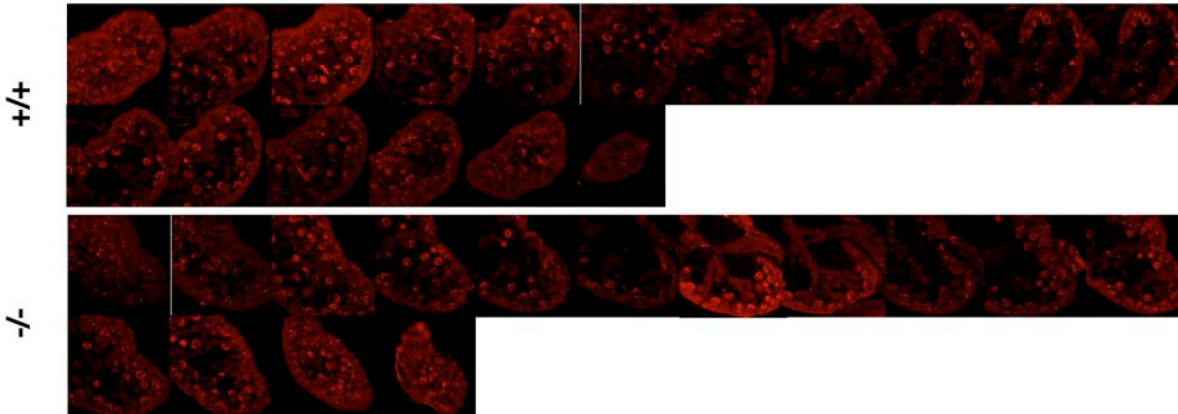
E12.5



E13.5



E14.5



Supplemental table1

Observed numbers of section

		Pax2	Wnt4	WT1
E12.5	+/+	32-35	37-41	60-62
	-/-	31-34	41-44	39-61
E13.5	+/+	51-55	88-91	49-57
	-/-	51-54	59-86	61-64
E14,5	+/+	98-105	-	75-91
	-/-	79-102	-	72-90

Sections each (n=5)