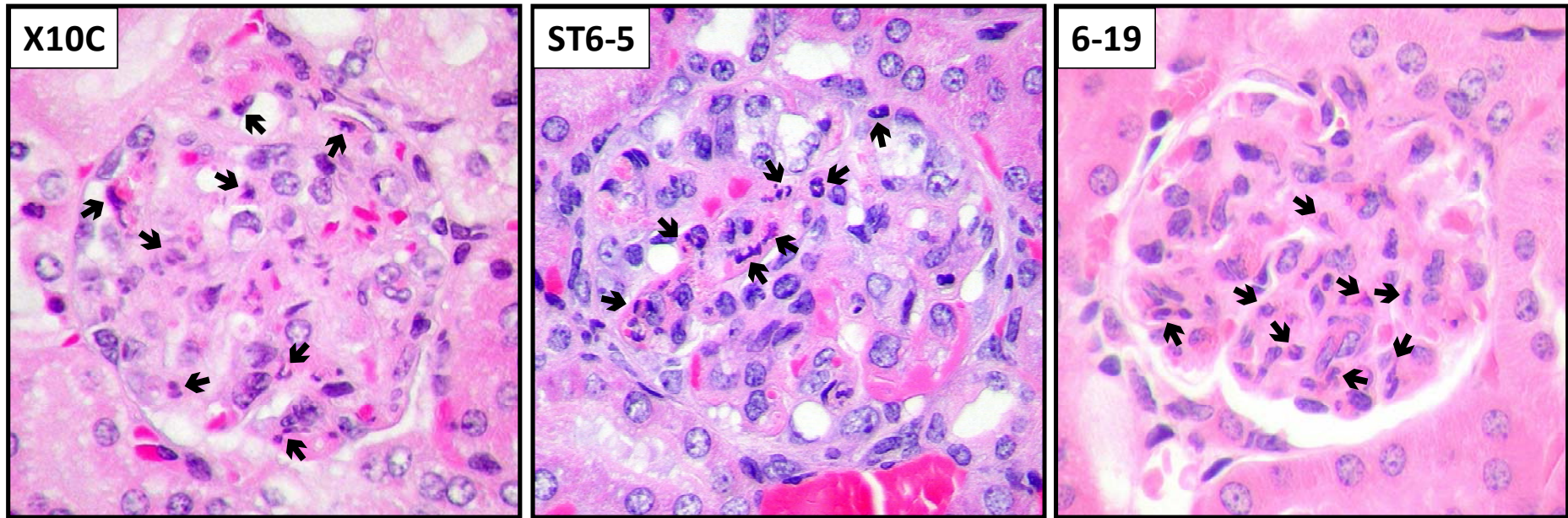
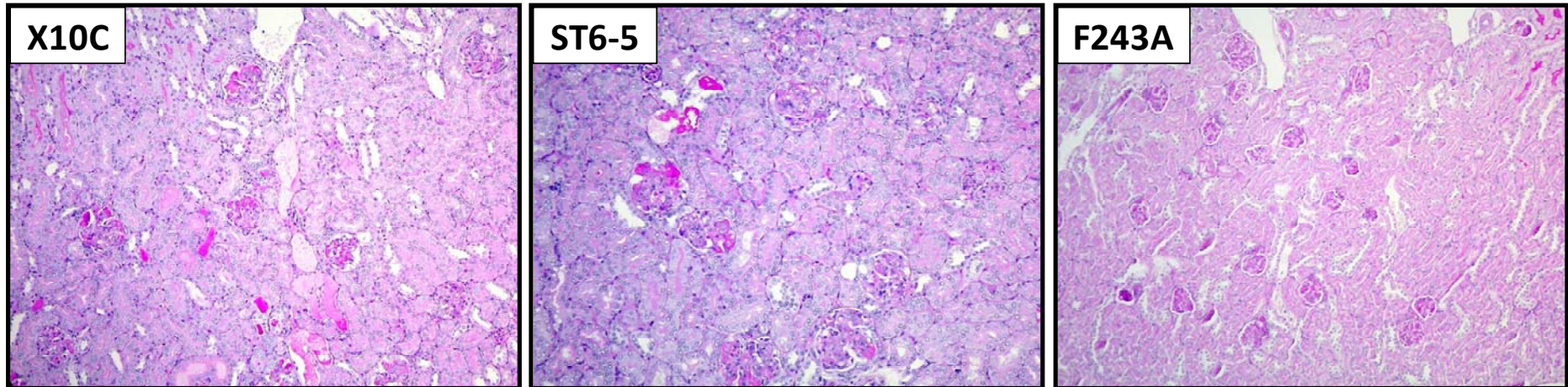


SUPPLEMENTAL DATA



**Figure S1.** Histological appearance of glomerular lesions from BALB/c mice implanted with X10C, 6-19.ST6-5 or 6-19 hybridoma. Note the infiltration of numerous PMN (arrows) in all three lesions. HE staining; original magnification, x400.



**Figure S2.** Histological appearance of kidney sections from BALB/c mice implanted with X10C, 6-19.ST6-5 or 6-19 F243A hybridoma. Note the markedly increased size of the majority of glomeruli and the presence of PAS-positive deposits in glomeruli in association with tubular cast formation in mice implanted with X10C or 6-19.ST6-5 hybridoma, but essentially normal histological appearance in mice implanted with 6-19 F243A cells. PAS staining; original magnification, x100.