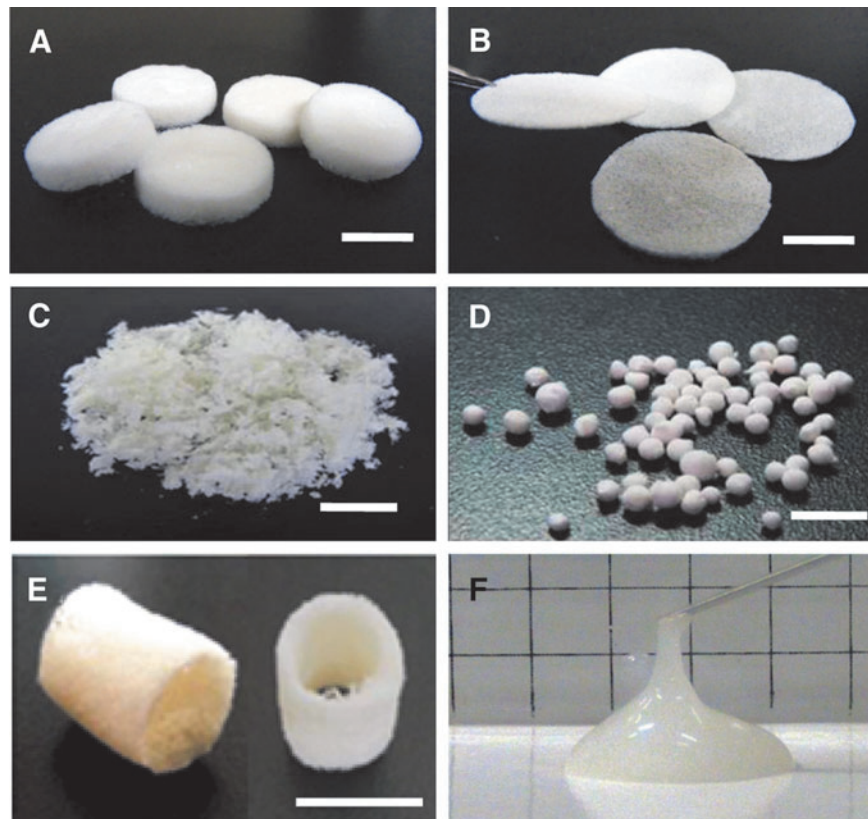


Supplementary Data



SUPPLEMENTARY FIG. S1. Three-dimensional scaffolds with a variety of macroscopic shapes prepared from decellularized porcine adipose tissue-derived extracellular matrix (ECM). (A) Sponges, (B) sheets, (C) powders, (D) beads, (E) hollow tubes, and (F) a gel. Scale bar represents 1 cm.