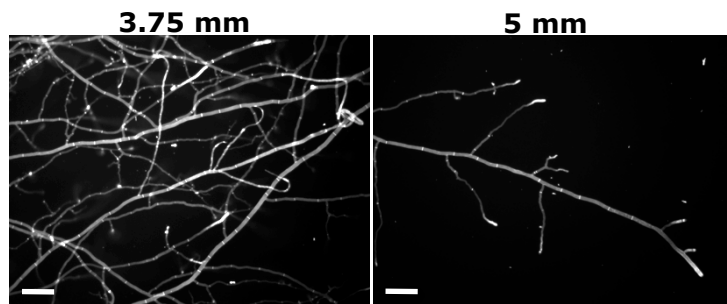
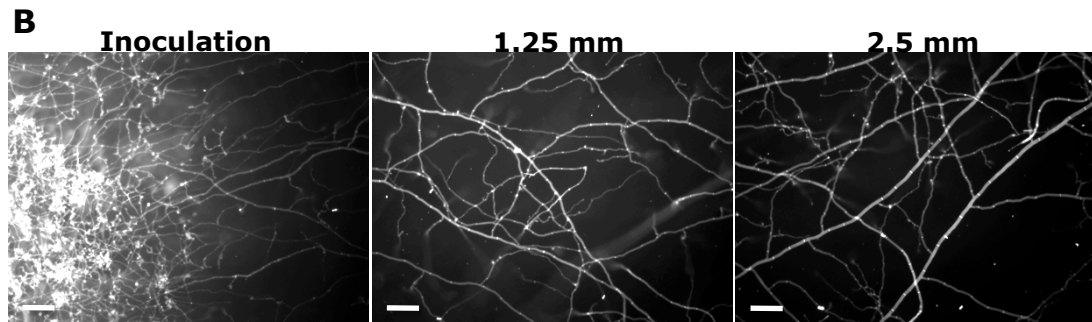
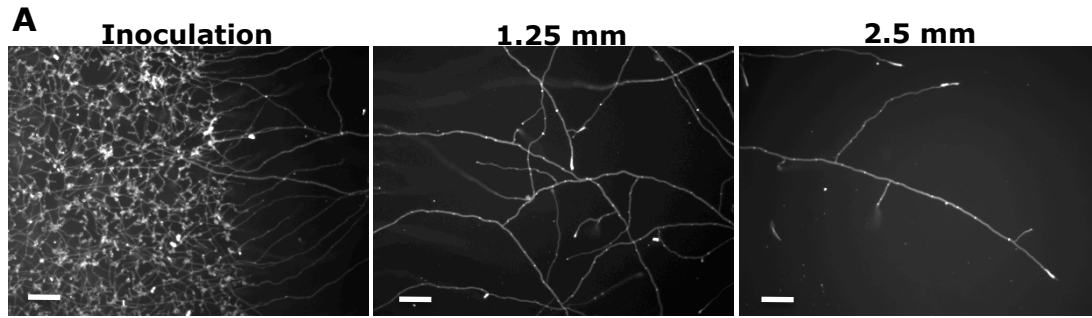
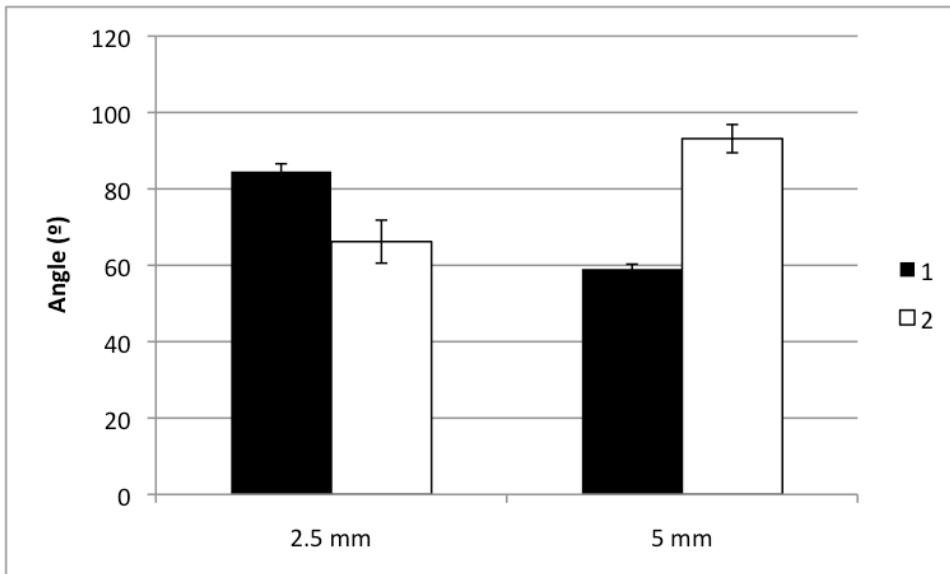


**Supplemental Figure 1.**  $\delta^{13}\text{C}$  natural abundance levels in wild type,  $\Delta Prm-1$ , and  $\Delta so$  colonies when  $^{15}\text{N}$ -AIB tracer was added A) at the time of inoculation and B) after 3 cm of growth. Bars=standard error.



**Supplemental Figure 2:** Micrographs of sections of wild type colonies stained with 10 mM calcofluor at A) 2.5 mm of growth and B) 5 mm of growth. Images taken at 1.25 mm intervals along a colony transect. Scale bar= 100  $\mu$ m.



**Supplemental Figure 3:** A graph showing average branching angles between leading hyphae and primary branches (1) or branching angles between primary and secondary branches (2) in colonies of different ages. Bars=standard error.