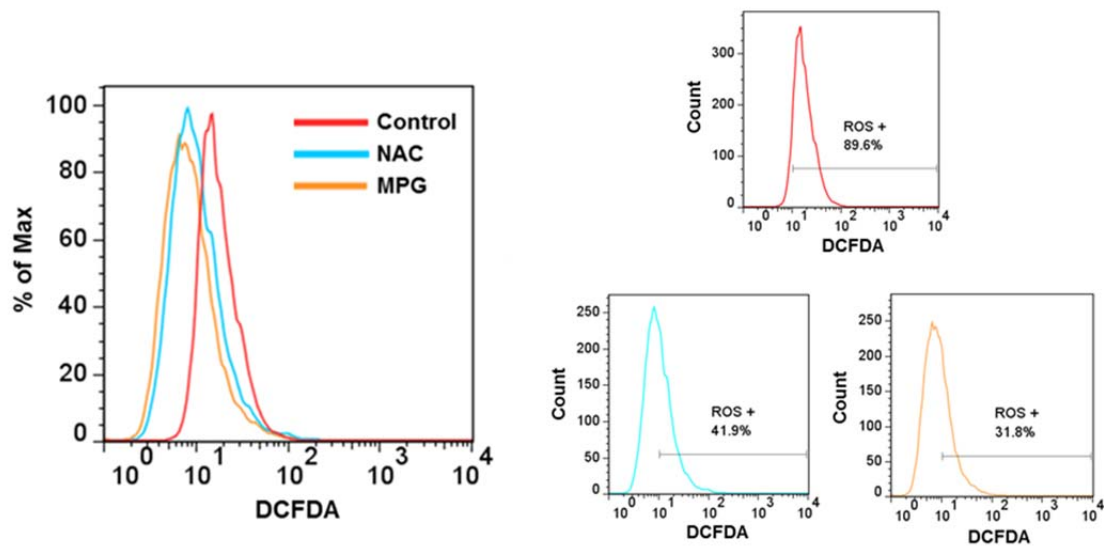


FIGURE S1. NAC and MPG reduce DCF-detectable ROS levels in human NSCLC cell lines. A549 cells were treated for 16 hours with nothing (red), NAC (teal), or MPG (orange). Following incubation cells were stained with H₂DCF-DA and analyzed by flow cytometry. The left panel shows a histogram overlay, while the right panels show the individual histograms with an arbitrary gate representing the percentage of cells with DCF-detected ROS.



Brock *et al.* - Figure S1