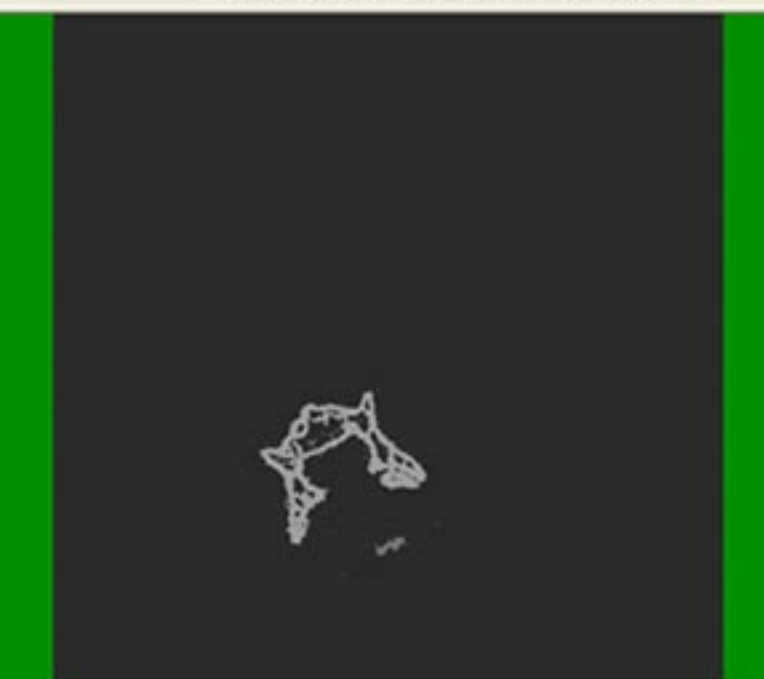


Suppl file\_Alizarin legend: alizarin staining to assess in vitro mineralization 2 weeks after cell transduction: **a** and **b** control cells transduced with Ad.EGFP; **c** and **d** cells infected with Ad. LMP3

## File 1

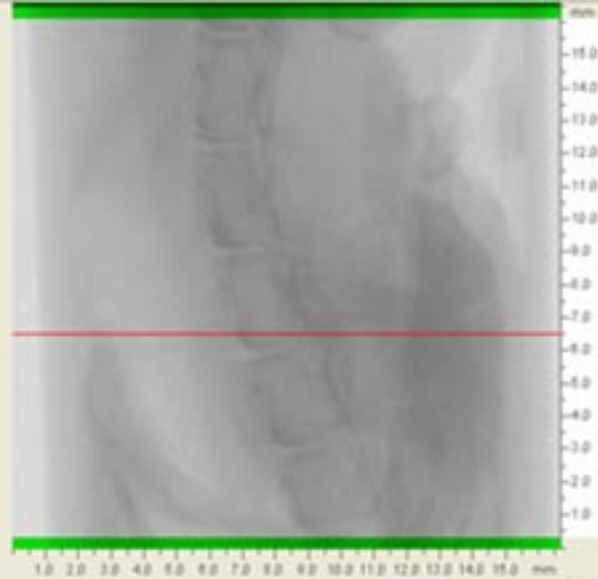
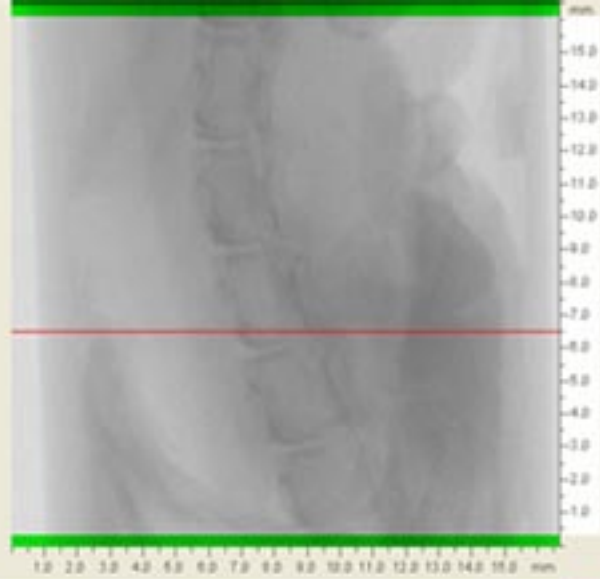
$\mu$ CT axial section of the murine paravertebral bone formation model (lower panels) with corresponding level of section on the spine (upper panels). The vertebra (**a**) and the new formed bone (**b**) are displayed in independent images as binarized greylevel images, composed exclusively of white pixels (bone) and black pixels (non-bone).



File 2

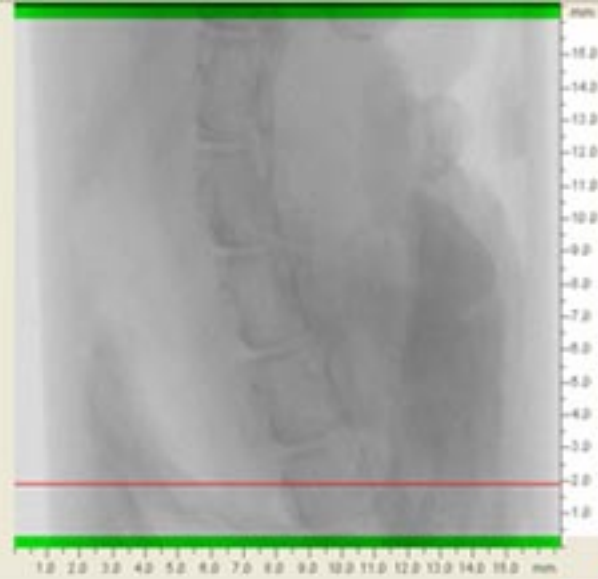
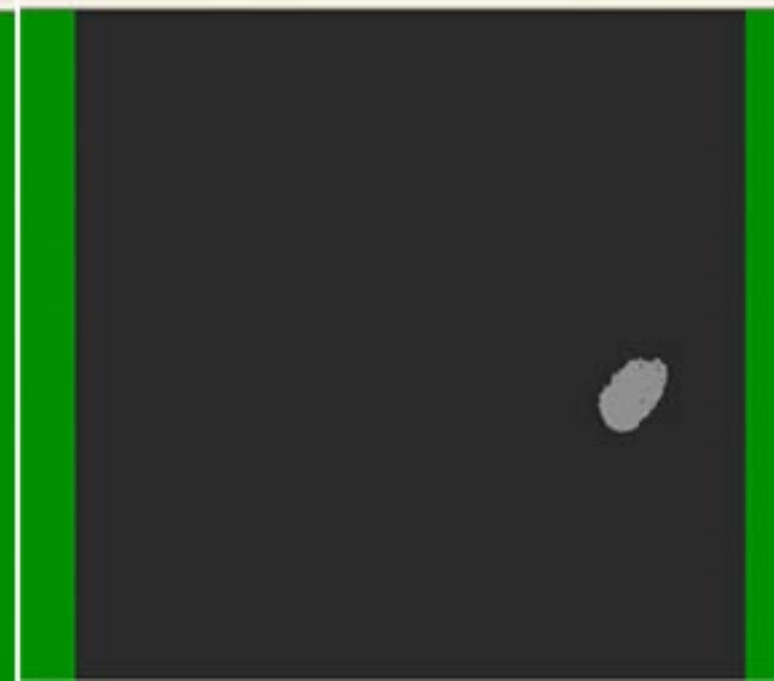
$\mu$ CT axial section taken at a lower level of the same treated mouse as showed in supplemental file 1

(see corresponding legend for details).

**a****b**

File 3

$\mu$ CT axial section taken at a lower level of the same treated mouse as showed in supplemental file 1 and 2 (see corresponding legends for details).

**a****b**

File 4

Negative 3D $\mu$ CT images obtained from a mouse subjected to unseeded scaffold implantation one after surgery; **a.** posterior view, **b.** lateral view.