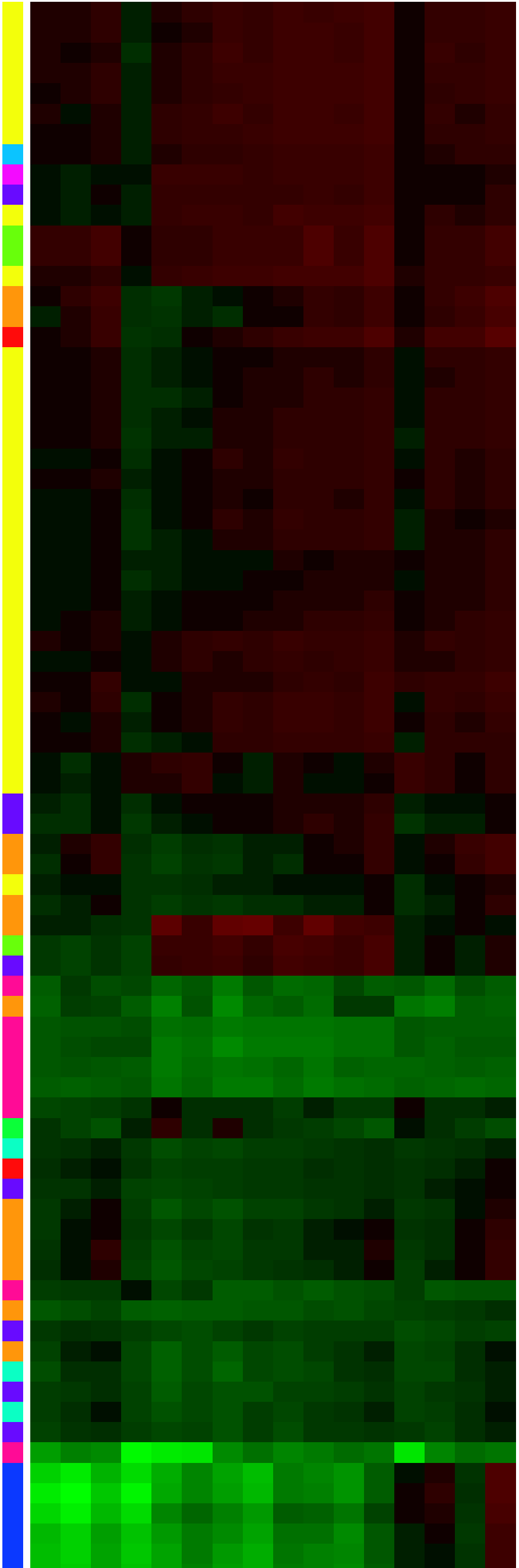
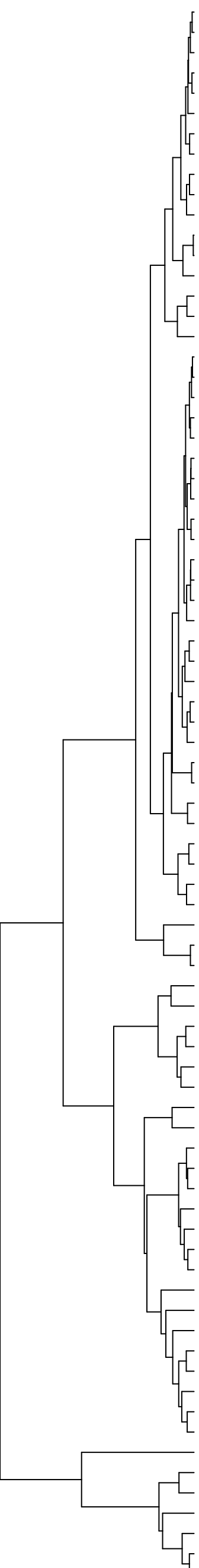
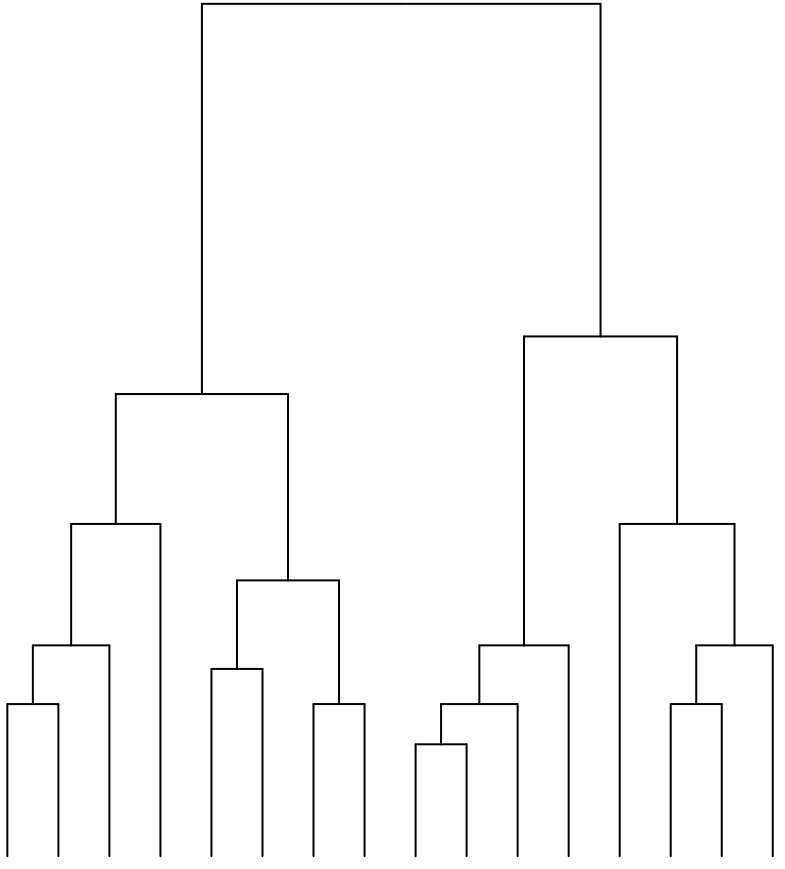
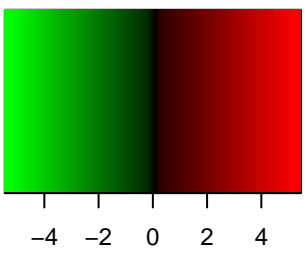


# DMRep (log<sub>2</sub>OR)



- Repeats
- AluYk12
  - AluYk13
  - AluYb3a2
  - AluYb9
  - AluYa8
  - AluYbc3a
  - AluJr4
  - 7SL
  - SVA
  - LTR12E
  - AluYf5
  - PRIMA4\_I
  - HERV39
  - AluYd3a1
  - L1PA7
  - L1PA5
  - LTR13
  - AluSp
  - AluSg7
  - AluSx4
  - AluSc5
  - AluSq4
  - AluYh9
  - AluSq2
  - AluYb3a1
  - AluSg4
  - AluSc
  - AluSz6
  - AluSq10
  - AluJb
  - PB1D11
  - AluYi6
  - AluSc8
  - AluSx3
  - AluYk11
  - AluYg6
  - AluSg1
  - AluYc5
  - FRAM
  - LTR12C
  - LTR12D
  - L1PA8
  - L1PA6
  - AluSz
  - L1
  - L1HS
  - HERVFH21I
  - HERVIP10FH
  - ALR2
  - L1P4a\_5end
  - ALRb
  - ALR\_
  - ALR1
  - ALR
  - ACRO1
  - MER22
  - LTR7B
  - HERVK9I
  - LTR12
  - L1PREC1
  - L1PA10
  - L1PB2c
  - L1PA2
  - BSR
  - L1ME3D\_3end
  - LTR6B
  - L1PREC2
  - THE1D
  - MER4A1
  - THE1B
  - HERV9
  - HSATI
  - LSU-rRNA\_Cel
  - LSU-rRNA\_Dm
  - LSU-rRNA\_Hsa
  - SSU-rRNA\_Hsa
  - SSU-rRNA\_Dm
  - SSU-rRNA\_Cel

- ESCM1-CTRL2
- ESCM1-CTRL4
- ESCM1-CTRL3
- ESCM1-CTRL1
- ESCM3-CTRL1
- ESCM4-CTRL1
- ESCM3-CTRL2
- ESCM3-CTRL4
- ESCM4-CTRL2
- ESCM3-CTRL3
- ESCM4-CTRL4
- ESCM4-CTRL3
- ESCM2-CTRL1
- ESCM2-CTRL2
- ESCM2-CTRL4
- ESCM2-CTRL3