

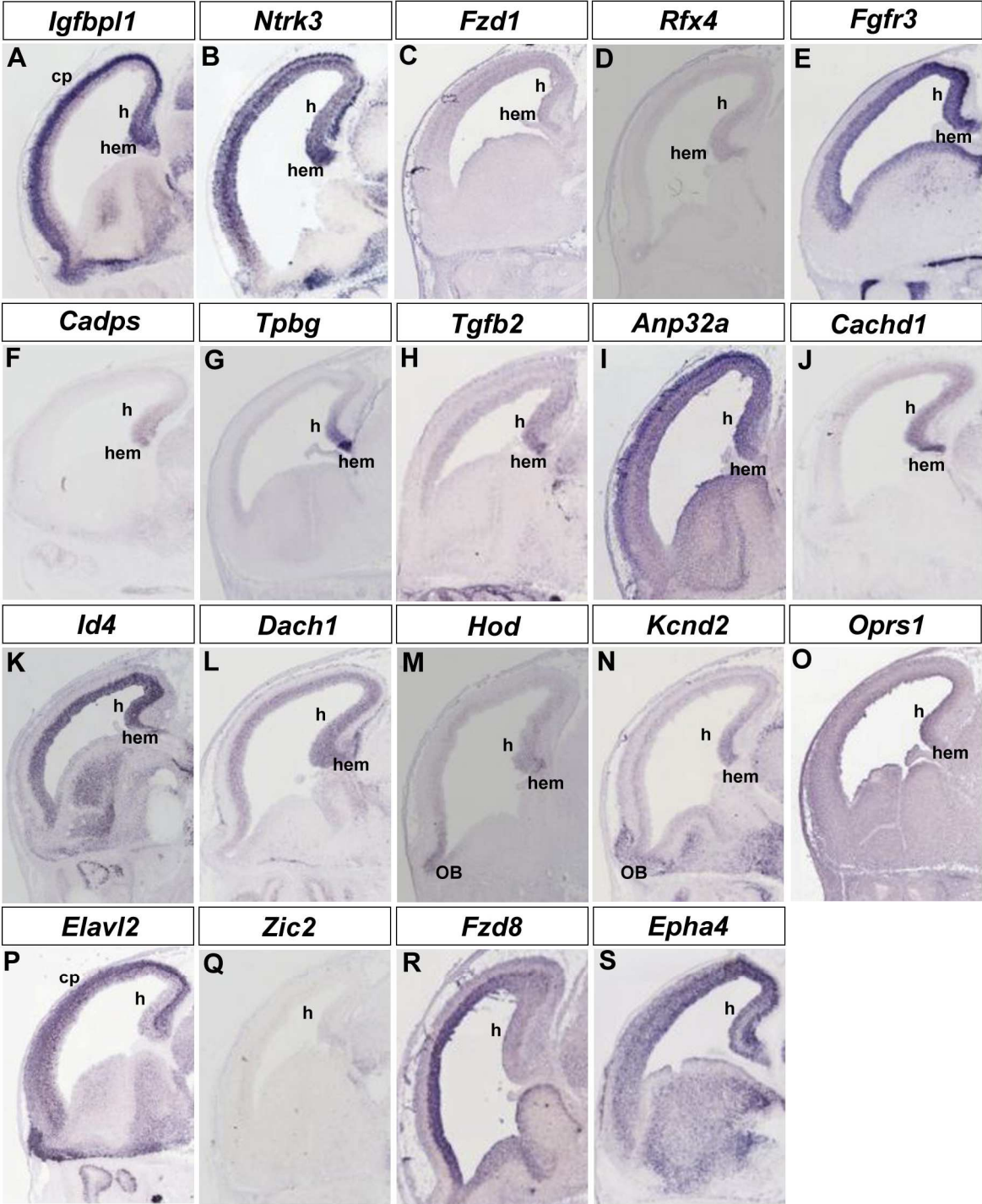
Supplementary Figure Legends

Supplementary Figure 1: In situ hybridisation for the indicated markers in the E14.5 wild-type dorsal telencephalon. Pictures were taken from <http://www.genepaint.org>.

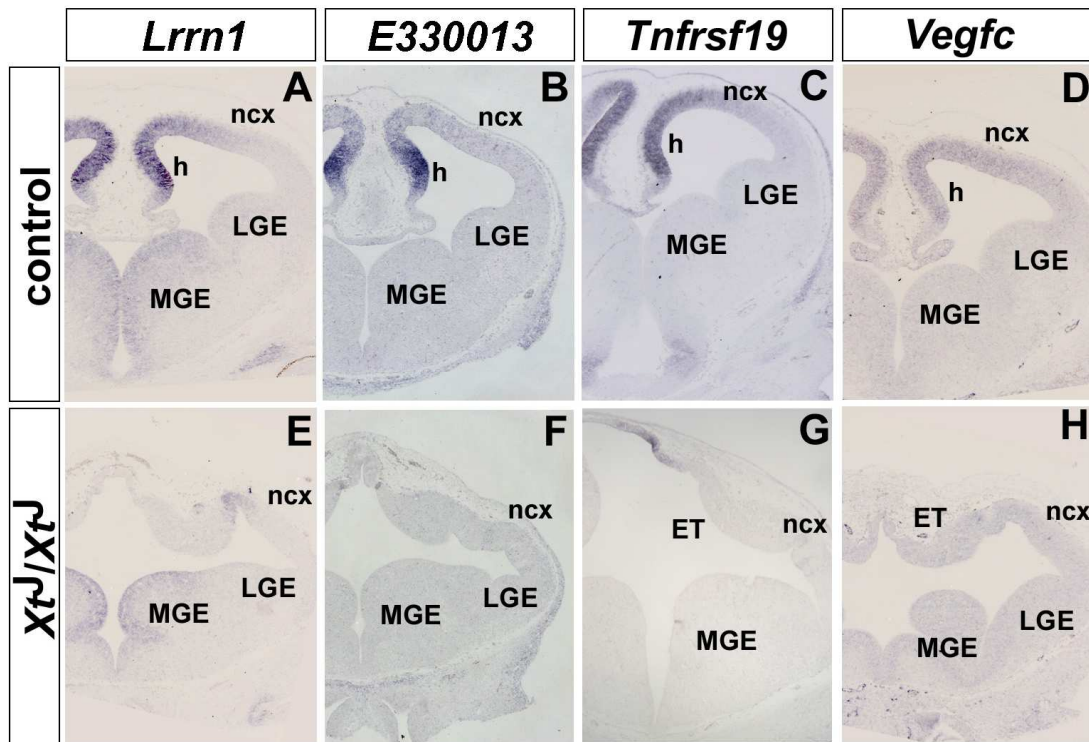
Supplementary Figure 2: Expression of several genes in the dorsal telencephalon is lost in Xt^J/Xt^J embryos. (A-D) In situ hybridisation for *Lrrn1* (A), *E33013* (B), *Tnfrsf19* (C) and *Vegfc* (D) showing graded expression in the dorsal telencephalon of wild-type embryos. (E-H) Xt^J/Xt^J embryos lack the corresponding expression domains.

Supplementary Figure 3: Motif analysis recovers a consensus site similar to a previously described Lef/Tcf consensus sequence.

Supplementary Figure 1:



Supplementary Figure 2:



Supplementary Figure 3:

