



## **Supplemental Material to:**

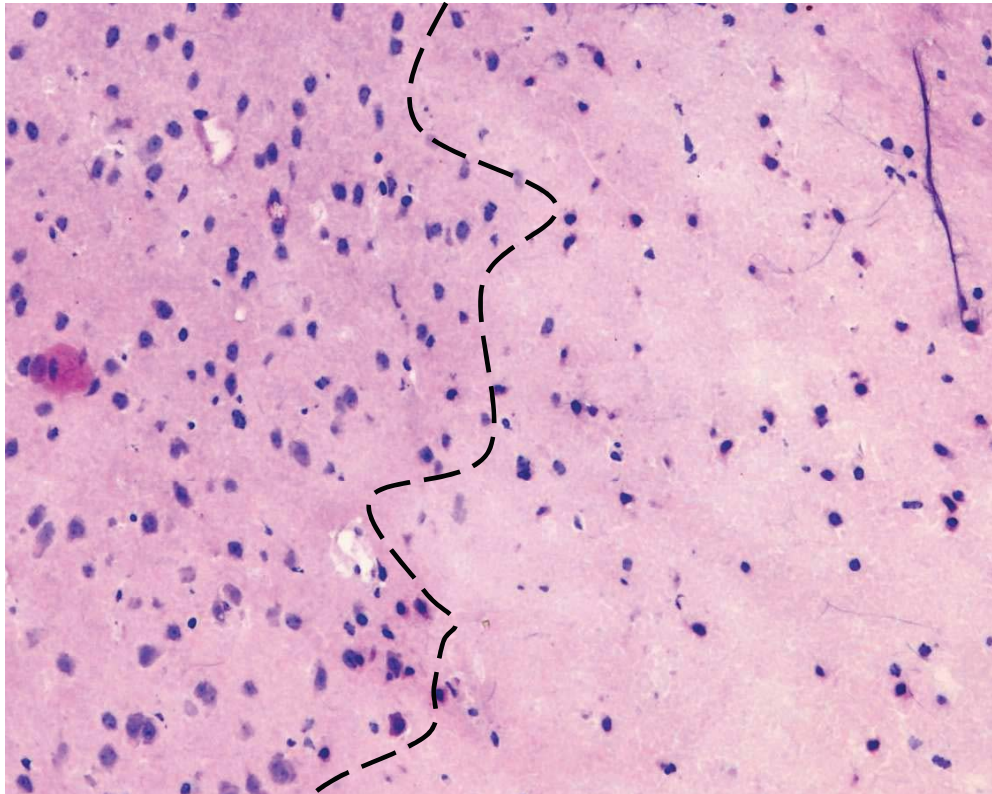
**Shuyu He, Chaodong Wang, Haiyan Dong, Fucan Xia,  
Hao Zhou, Xiaoshu, Jiang, Chunying Pei, Huan Ren,  
Huashun Li, Rui Li and Hongwei Xu**

**Immune-related GTPase M (IRGM1) regulates neuronal  
autophagy in a  
mouse model of stroke**

**Autophagy 2012; 8(11)**

**<http://dx.doi.org/10.4161/auto.21561>**

**[www.landesbioscience.com/journals/autophagy/article/21561](http://www.landesbioscience.com/journals/autophagy/article/21561)**



**Supplementary Figure 1**

**Figure S1.** Hematoxylin-eosin (H&E) staining of a representative section of ischemic infarct region. The infarction and its border were identified by neuronal pyknosis, karyolysis, and decreased eosin staining, while the penumbra area was identified from the edge of the infarction to 1 mm toward adjacent cerebral tissue.