

Supplemental Figure 1

Immunofluorescence staining of CD11b (left) and CD8 (right) demonstrates that the majority of perivascular infiltrates are composed of macrophages and CD8+ T cells in allografts. * represents vascular lumen.

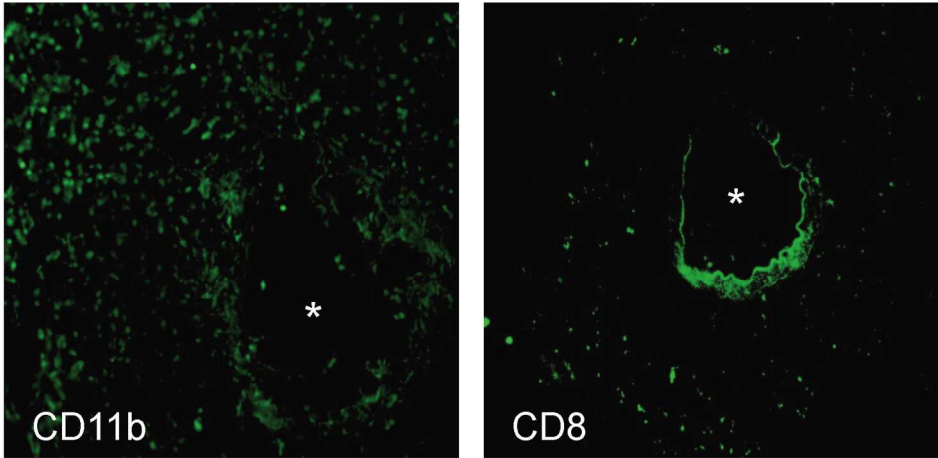
Video file 1

The clip demonstrates the donor kidney along with the ureter and bladder prior to anastomosis to the recipient.

Video file 2

The clip shows the cross clamp removal following anastomosis. Note the change in color in the graft that manifests full reperfusion.

Supplemental Figure 1



127x78mm (600 x 600 DPI)