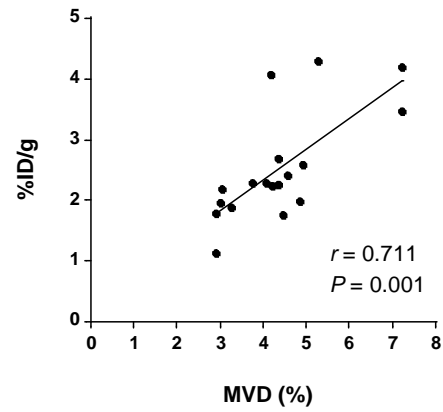


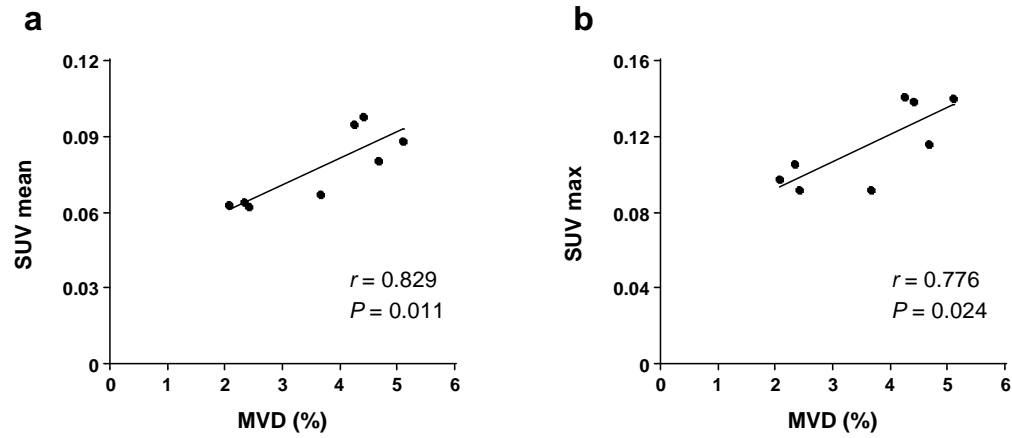
Supplemental Figure 1

Correlation between tumor ^{64}Cu -cyclam-RAFT-c(-RGDfK-)₄ uptake expressed as %ID/g (mean \pm SD) and corresponding HuH-7 tumor MVD (%). %ID/g was measured by biodistribution assay



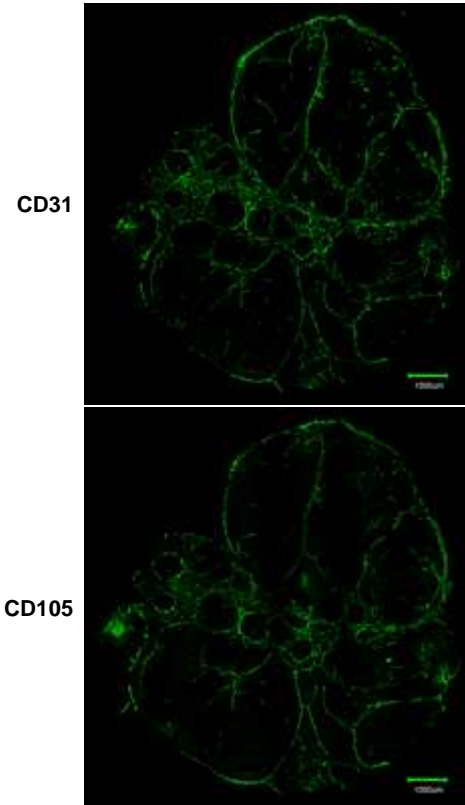
Supplemental Figure 2

Correlation between tumor ^{64}Cu -cyclam-RAFT-c(-RGDfK-)₄ uptake expressed as SUV (mean or max) and corresponding HuH-7 tumor MVD (%). SUV was measured by quantitative PET imaging



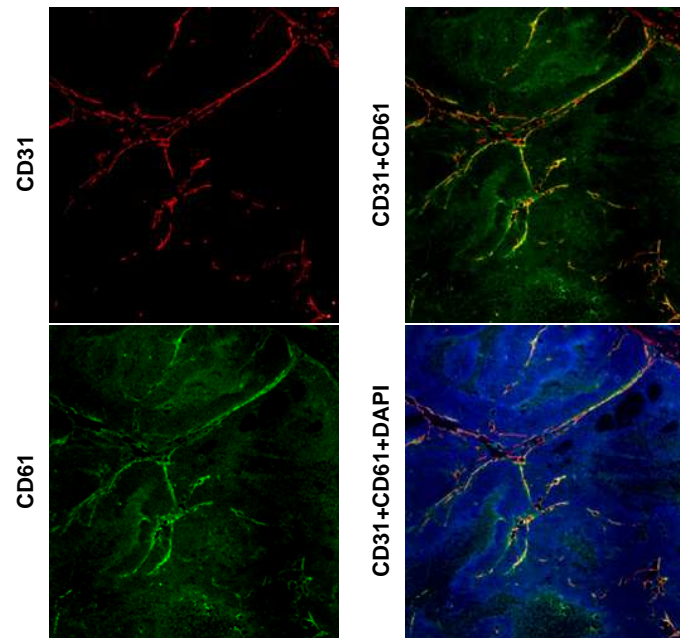
Supplemental Figure 3

Immunofluorescence staining of CD31 and CD105
of serial HuH-7 tumor sections



Supplemental Figure 4

Double immunofluorescence staining of CD31 and CD61 of HuH-7 tumor section, with nuclei stained with DAPI



Supplemental Figure 5

Autoradiographic examination and double immunofluorescence staining of CD31 and CD61 with the same kidney sections from mice treated with vehicle or TSU-68, with nuclei stained with DAPI

