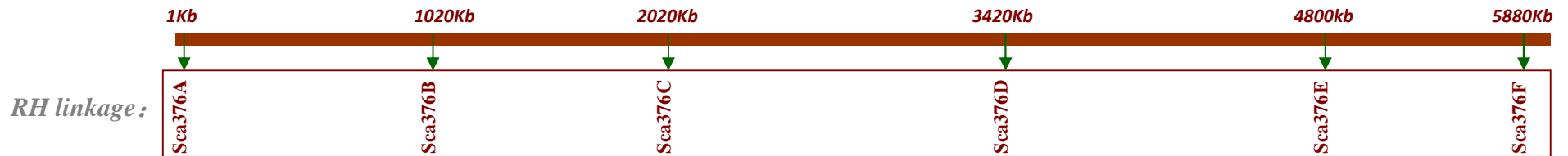
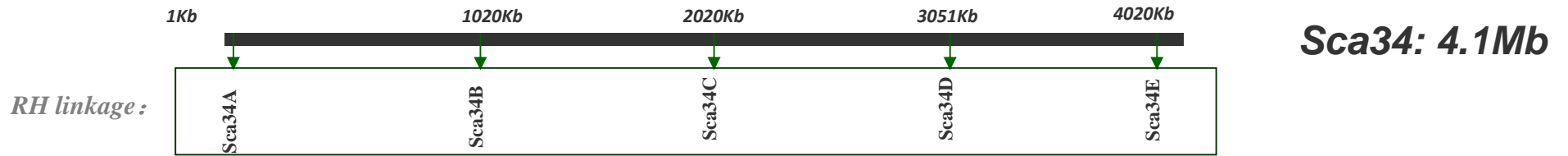


13 Largest scaffolds > 4 Mb

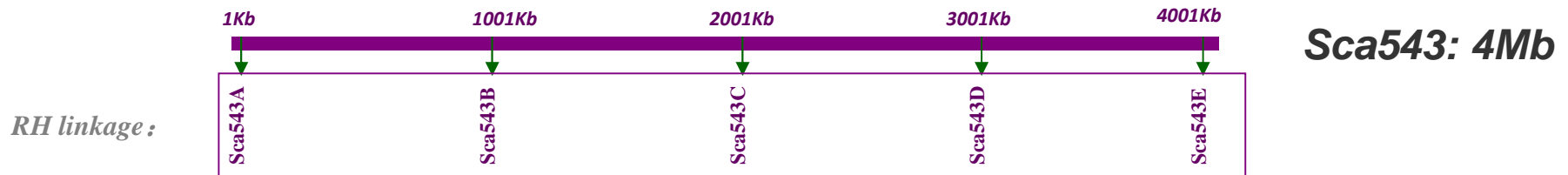
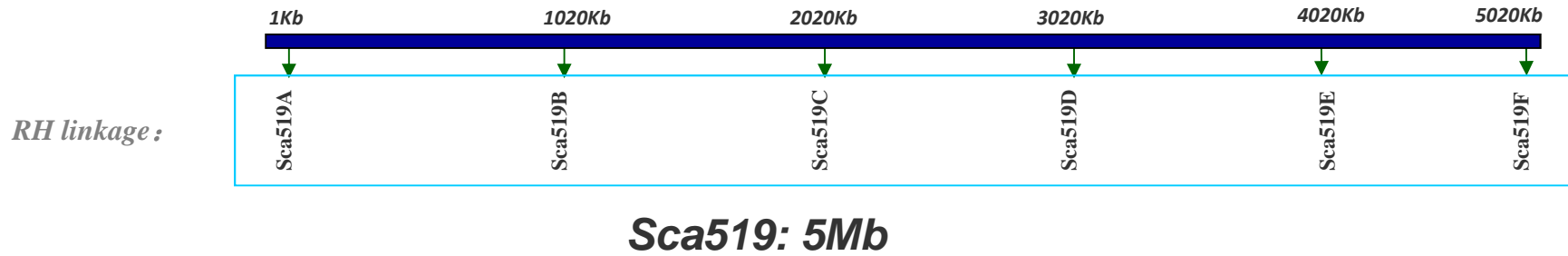


Markers scaXXX... contained in the same box are linked together by RH mapping.

13 Largest scaffolds > 4 Mb



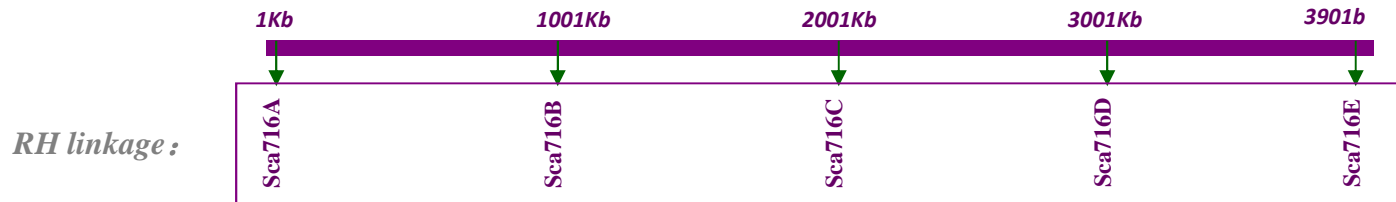
13 Largest scaffolds > 4 Mb



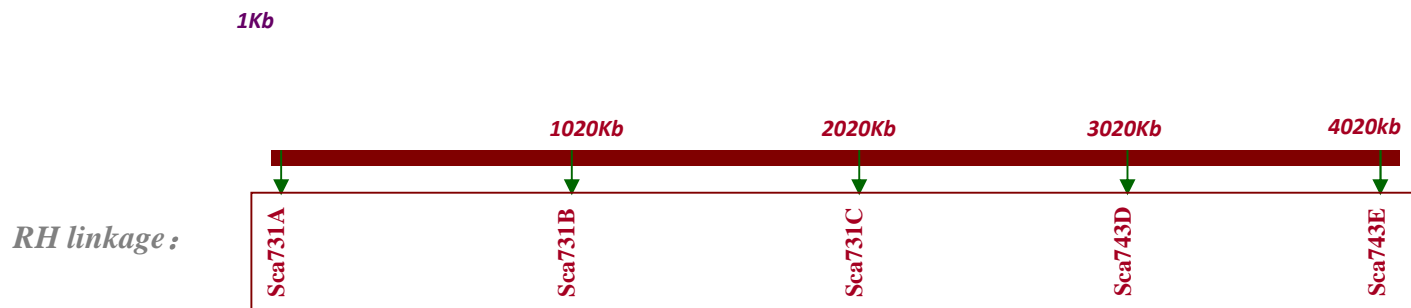
13 Largest scaffolds > 4 Mb



Sca58: 4.9Mb



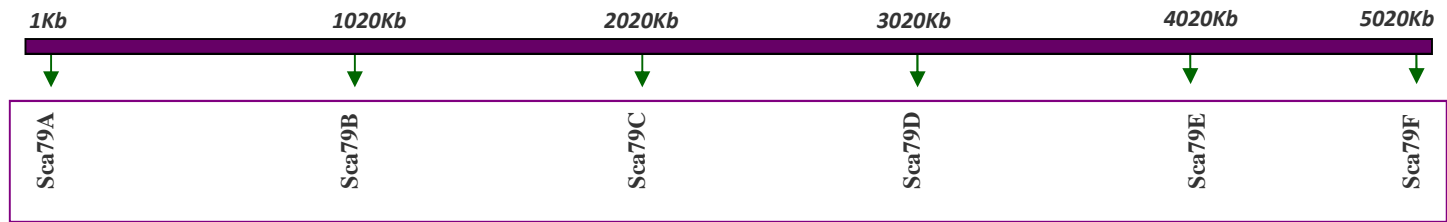
Sca716: 4Mb



Sca731: 4.1Mb

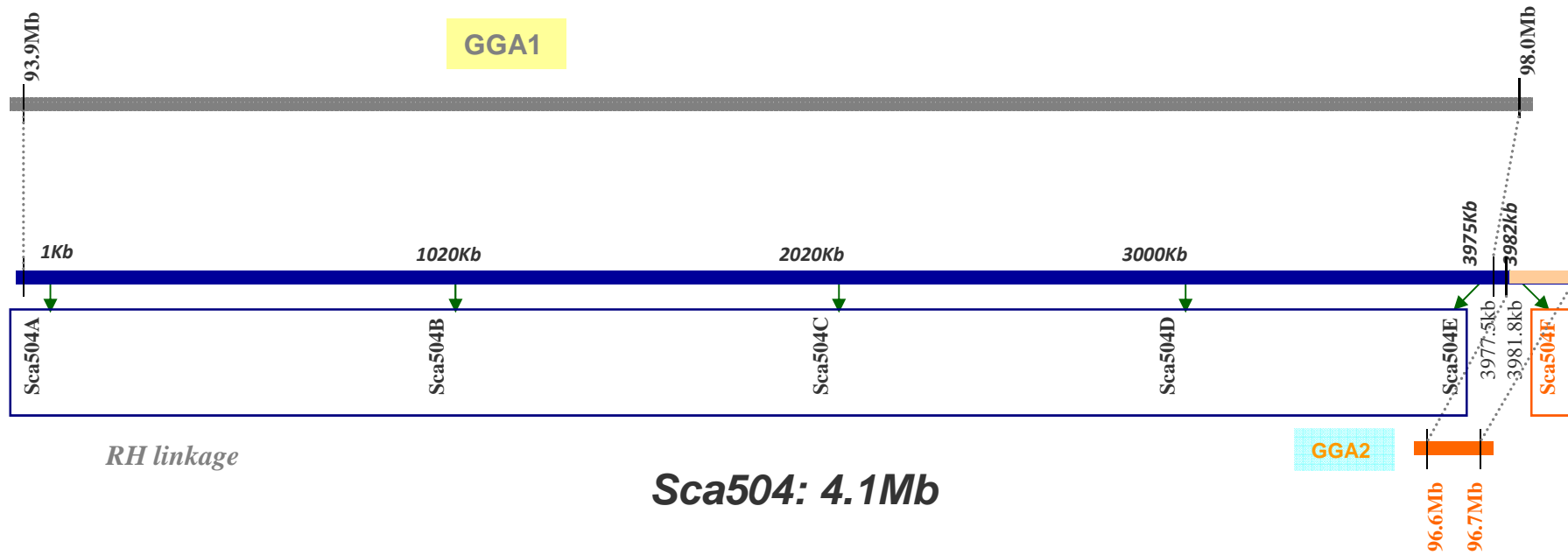
13 Largest scaffolds > 4 Mb

RH linkage :



Sca79: 5.1Mb

13 Largest scaffolds > 4 Mb



Markers sca504A, sca504B, sca504C, sca504D and sca504E are linked together by RH mapping, whereas marker sca504F is not linked, suggesting the end of the scaffold is misassembled.