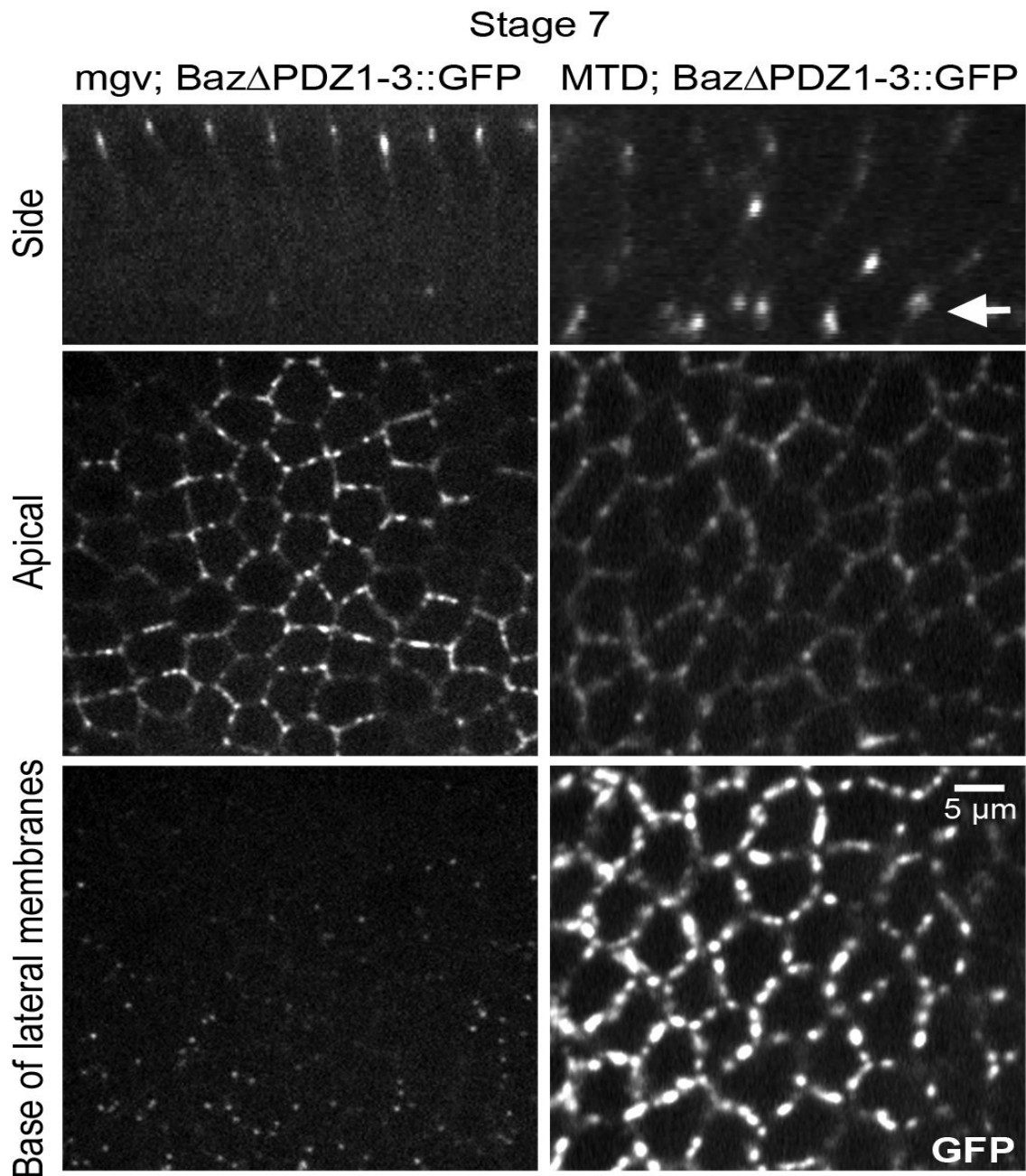


Supplementary Table 1. Comparisons of total fluorescent intensities of Baz puncta per cell.

Pair wise comparisons	Normalized total puncta fluorescence intensity per cell (mean±SD)	N (embryos)	p value (t-tests)
For Fig 1C			
Early Cellularization			
mgv; Baz::GFP	1.00±0.58	5	0.37*
mgv; BazΔPDZ1-3::GFP	0.81±0.07	5	
Mid Cellularization			
mgv; Baz::GFP	1.00±1.64	5	0.47
mgv; BazΔPDZ1-3::GFP	0.26±1.80	5	
Late Cellularization			
mgv; Baz::GFP	1.00±0.85	5	0.66
mgv; BazΔPDZ1-3::GFP	0.44±0.54	5	
For Fig 4E-F			
Gastrulation (stage 7-8)			
Endogenous Baz in WT (G)	1.00±0.74	10	0.84
Endogenous Baz in mgv; <i>par-1</i> shRNA Valium22	1.08±0.74	10	
Gastrulation (stage 7-8)			
mgv; Baz::GFP (G) attp40	1.00±0.89	5	0.68
mgv; Baz::GFP; <i>par-1</i> shRNA Valium 22	1.18±0.36	5	
For Fig 4H			
Gastrulation (stage 7-8)			
mgv; Baz ::GFP	1.00±0.49	5	0.99
mgv; BazΔPDZ1-3::GFP	0.99±0.51	5	
mgv; Baz ^{S151A} ^{S1085A} ::GFP	0.78±0.89	5	0.39
mgv; Baz ^{S151A} ΔPDZ1-3 ^{S1085A} ::GFP	1.14±0.28	5	0.29

*each comparison based on quantifications of puncta selected with the same settings within each experiment



McKinley and Harris Supplementary Figure 1

Supplementary Figure 1. **Excessive overexpression of Baz Δ PDZ1-3::GFP leads to basal mislocalization at gastrulation.** Stage 7 embryos fixed and imaged for GFP. Baz Δ PDZ1-3::GFP expressed maternally with mgv is primarily localized around the apicolateral domain. Baz Δ PDZ1-3::GFP expressed maternally with the stronger MTD is primarily localized the basal end of lateral membranes (arrow).