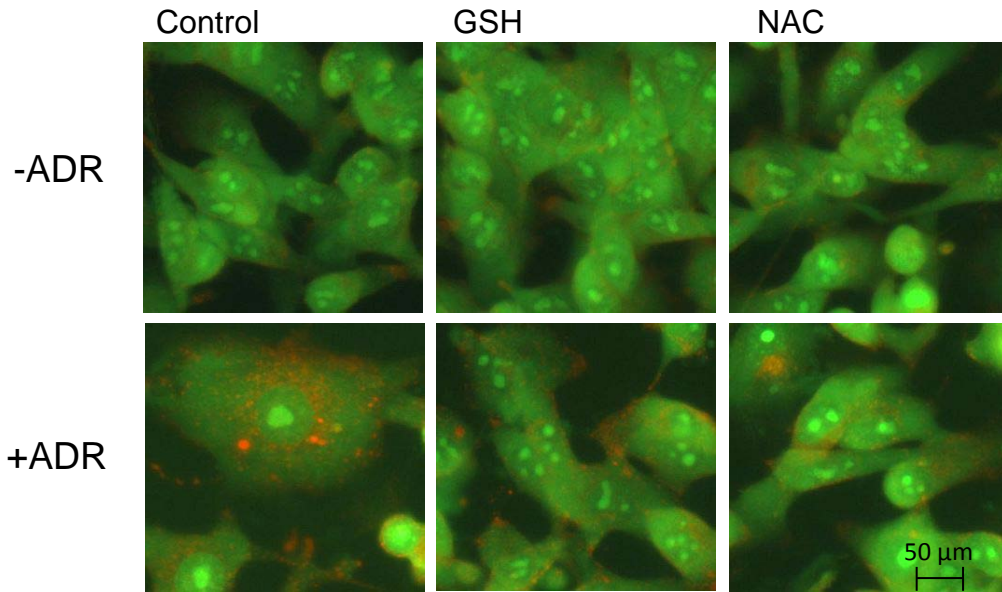
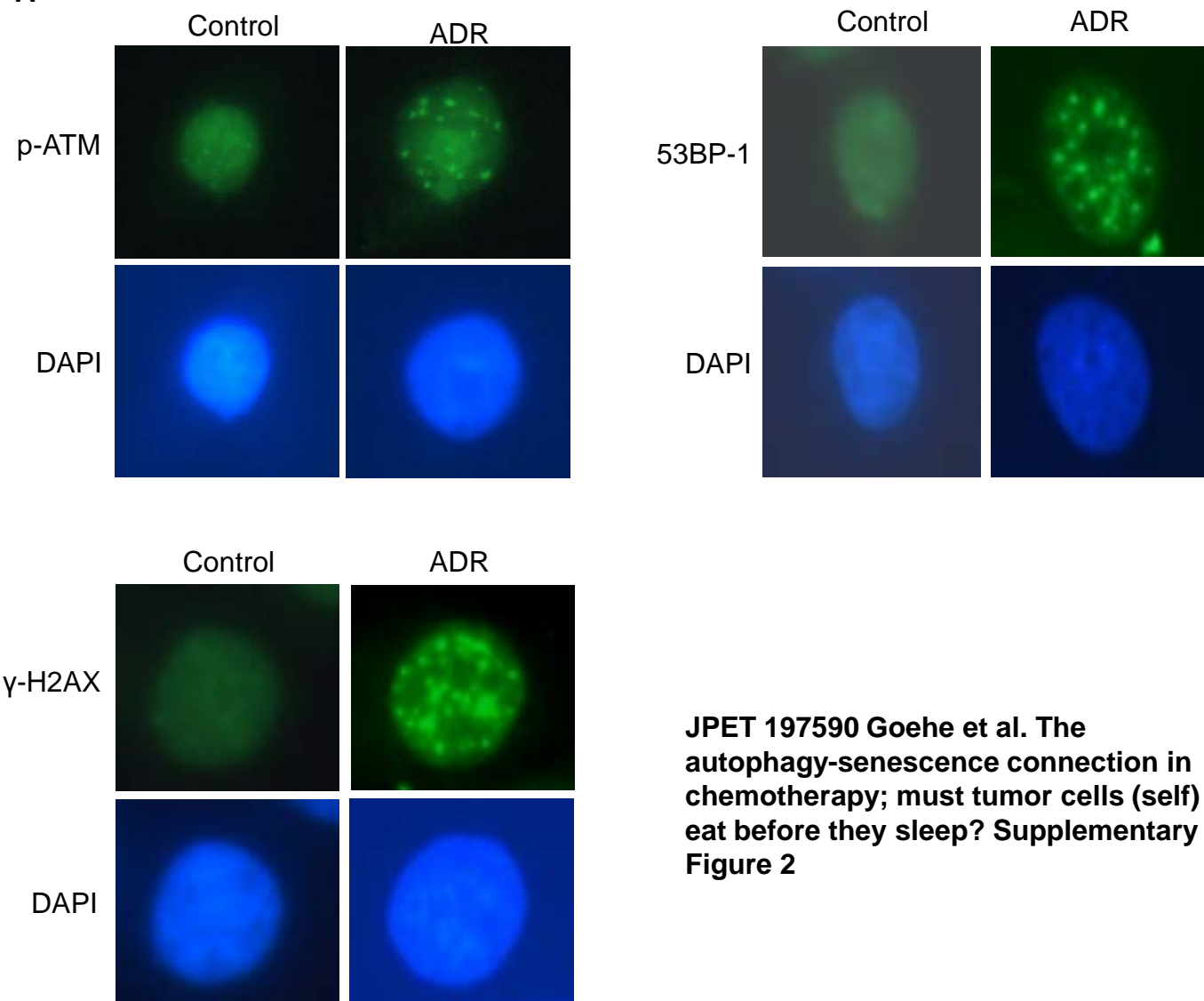


D

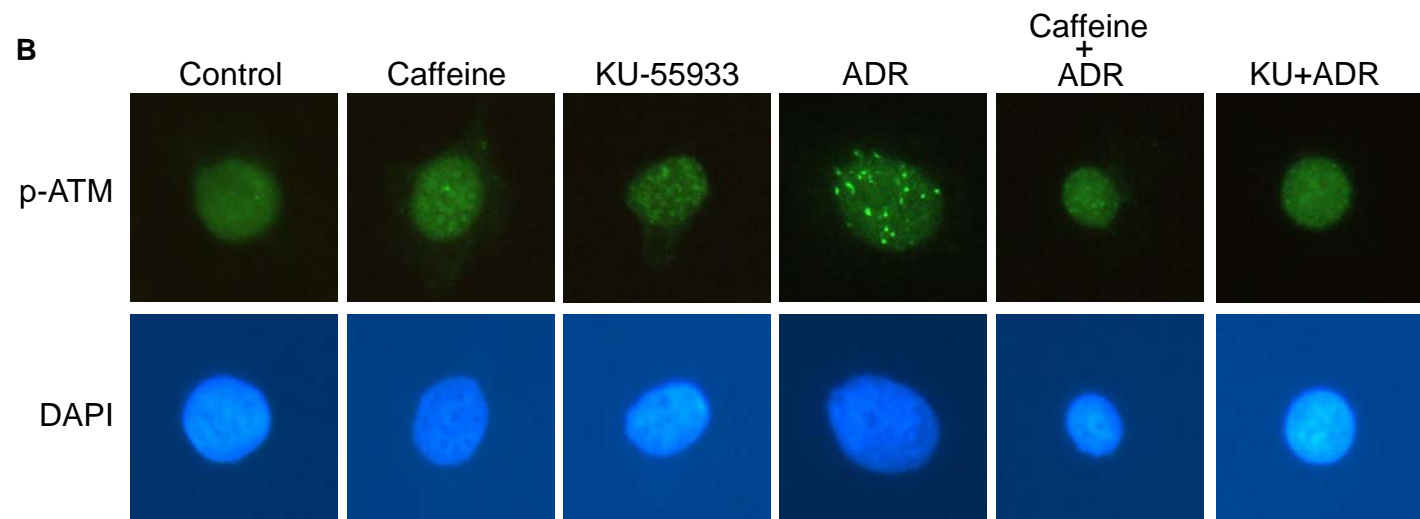
HCT-116



**JPET 197590 Goehe et al. The autophagy-senescence connection in chemotherapy; must tumor cells (self) eat before they sleep?  
Supplementary Figure 1**

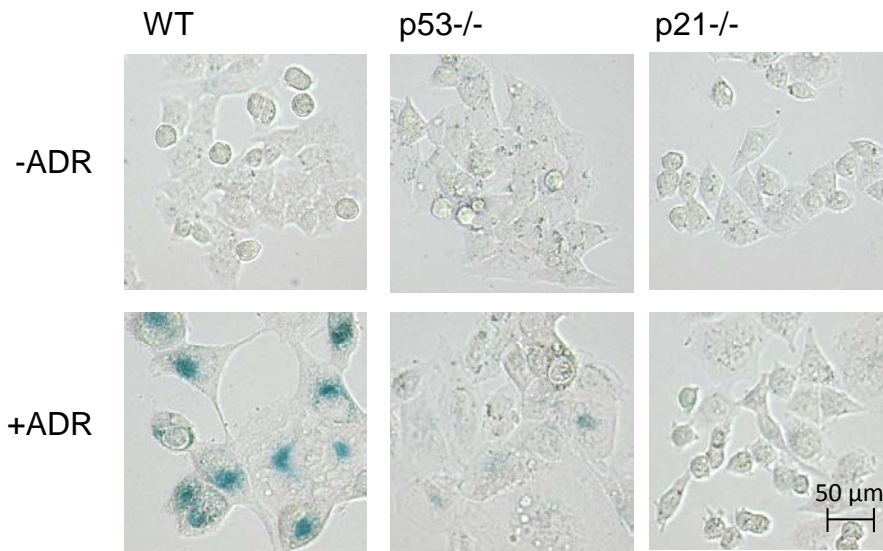
**A**

**JPET 197590 Goehe et al. The autophagy-senescence connection in chemotherapy; must tumor cells (self) eat before they sleep? Supplementary Figure 2**

**B**

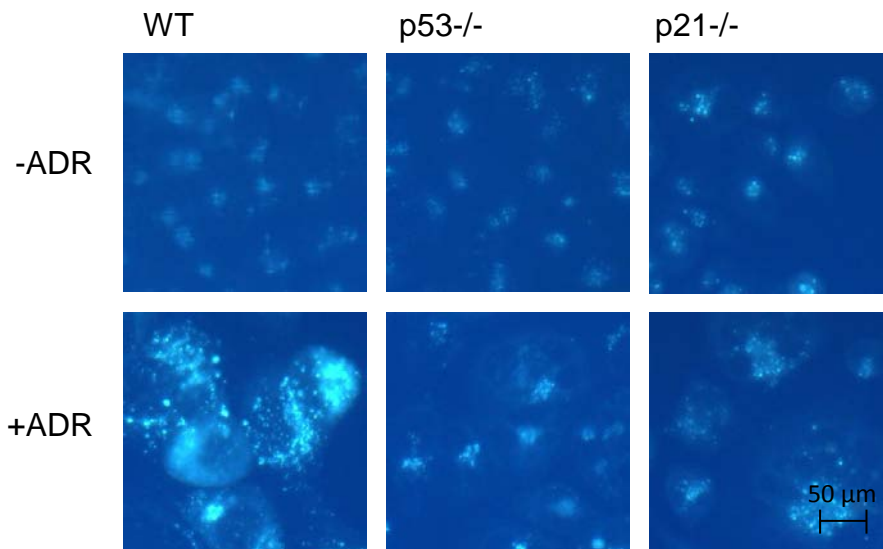
**A**

**HCT-116**



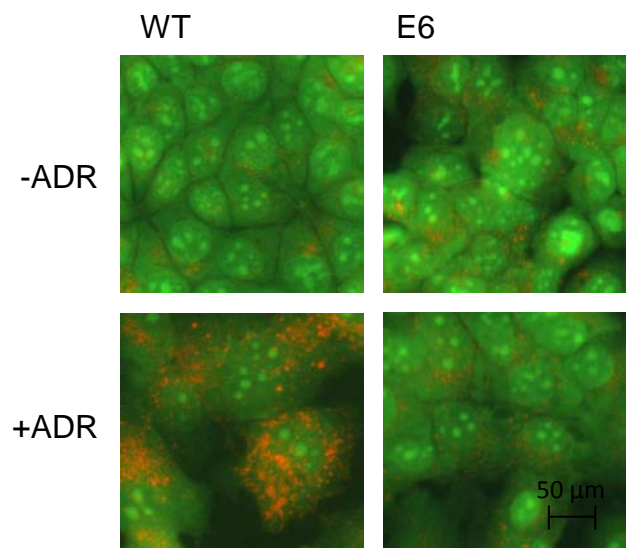
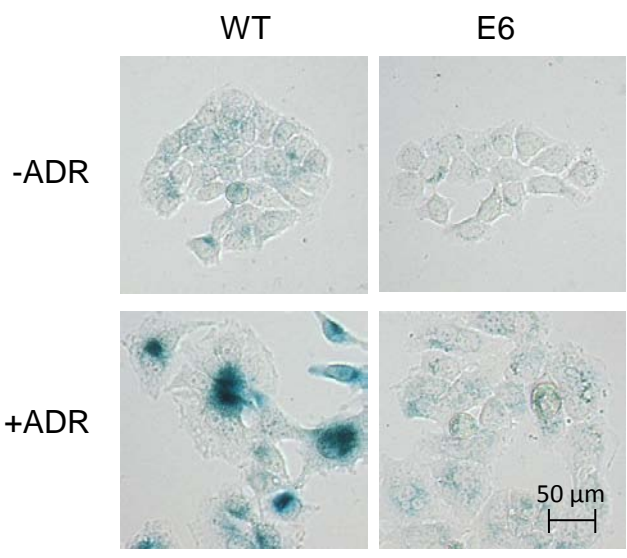
**B**

**HCT-116**

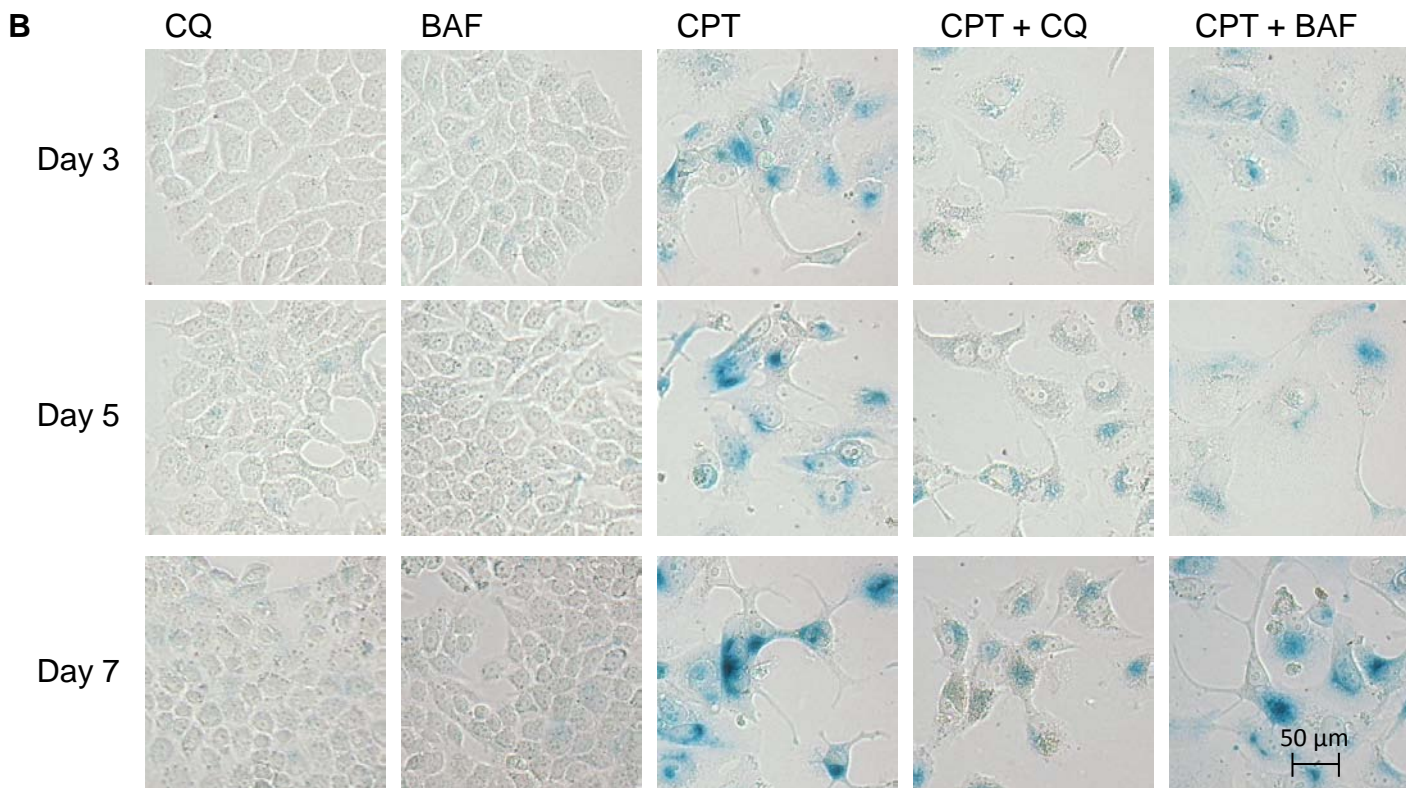
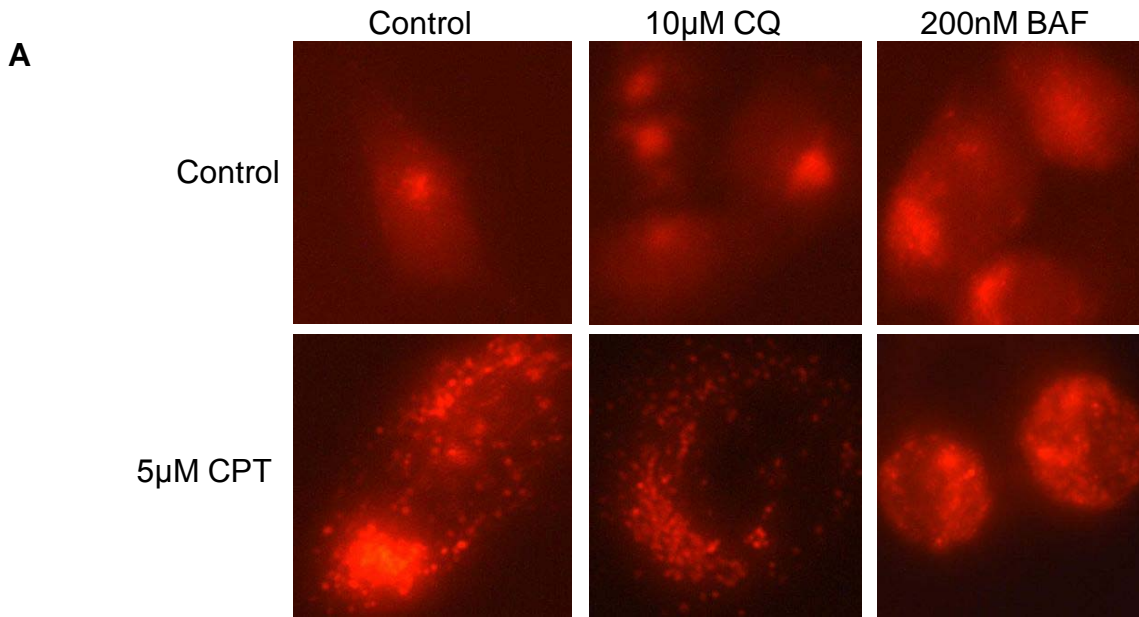


**JPET 197590 Goehe et al. The autophagy-senescence connection in chemotherapy; must tumor cells (self) eat before they sleep? Supplementary Figure 3**

C

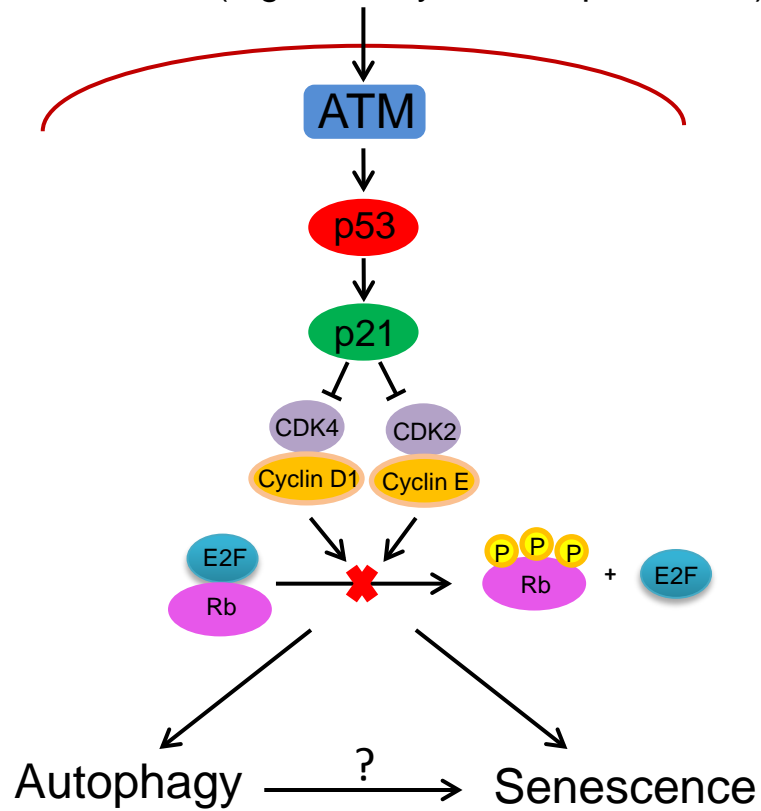


**JPET 197590 Goehe et al. The autophagy-senescence connection in chemotherapy; must tumor cells (self) eat before they sleep? Supplementary Figure 3**



**JPET 197590 Goehe et al. The autophagy-senescence connection in chemotherapy; must tumor cells (self) eat before they sleep? Supplementary Figure 4**

⚡ Genotoxic Stress (e.g. Adriamycin, Camptothecin) ⚡



**JPET 197590 Goehe et al. The autophagy-senescence connection in chemotherapy; must tumor cells (self) eat before they sleep? Supplementary Figure 5**