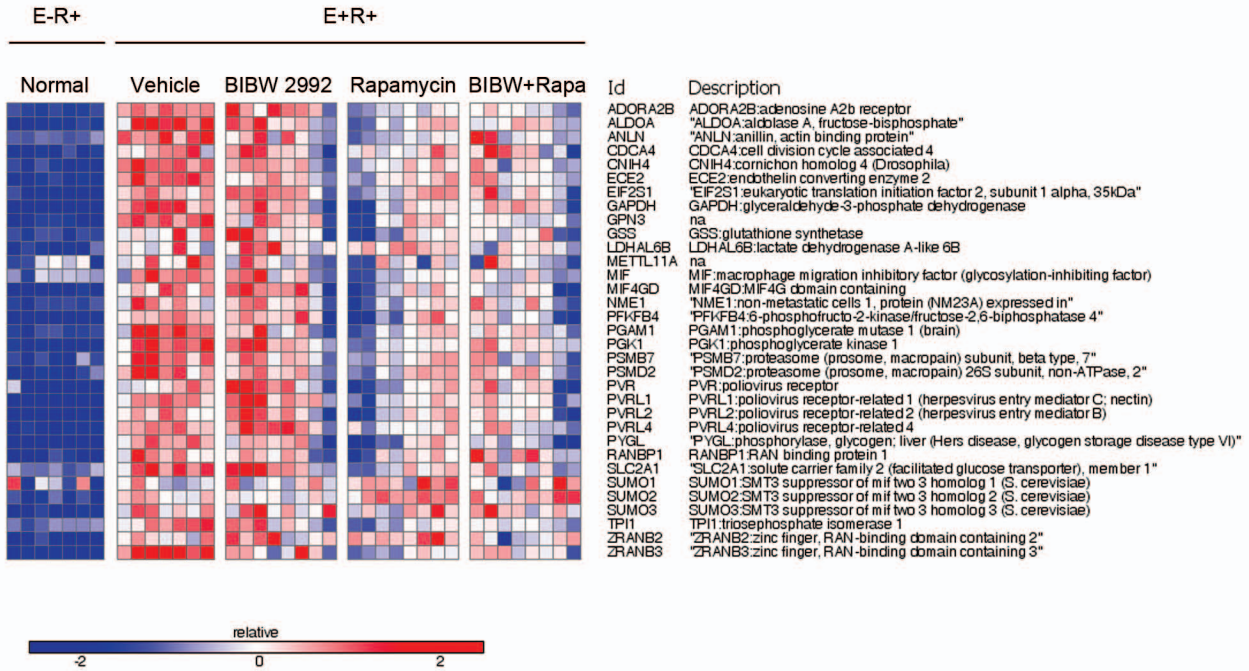
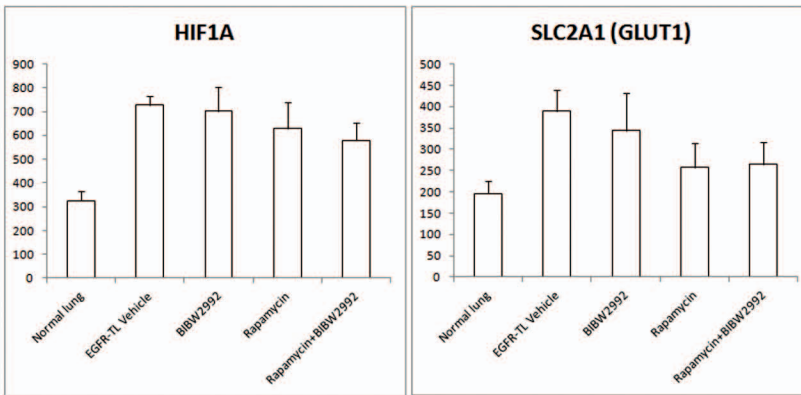


**A**



**B**



**Figure S7. (A)** Heat map with gene expression values of a hypoxia-related signature. After GSEA analysis, Winter's hypoxia-related signature (from MSigdb, containing the genes shown) was found to be significantly enriched in EGFR-TL tumors compared to normal lung, and was reversed by drug treatments. **(B)** Absolute gene expression values of HIF1A and GLUT1 obtained from microarray data.