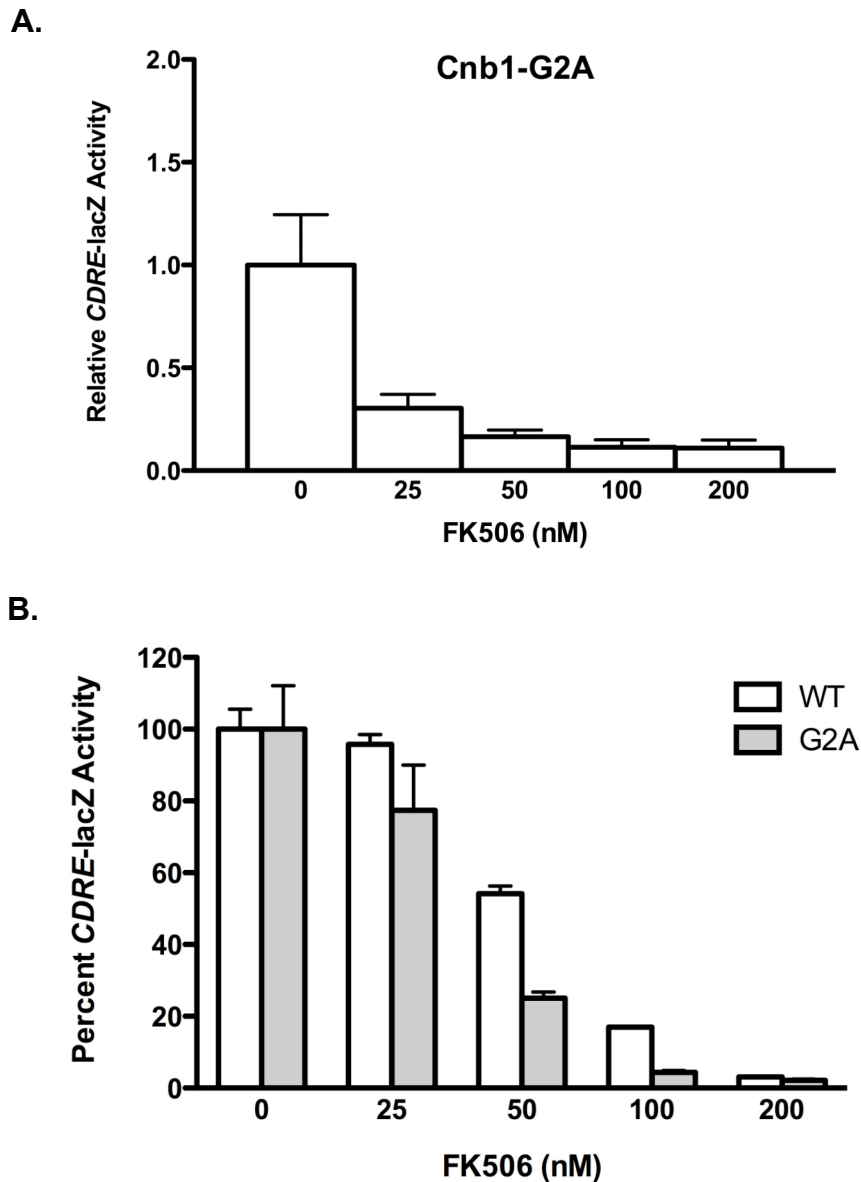


Supplementary Figure 2



Supplementary Figure 2. FK506 inhibits Cnb1-G2A calcineurin activity. (A) Basal calcineurin activity of Cnb1-G2A is inhibited by FK506. *Cnb1Δ* yeast harboring the *CDRE-lacZ* reporter gene were transformed with Cnb1-G2A expression plasmid. Yeast were grown overnight in selective media containing varying concentrations of FK506 (0-200 nM). Yeast were subsequently diluted into YPD (pH5.5) containing the same FK506 concentration and grown for an additional 4 hours prior to harvesting for quantitative β -galactosidase assays. Data plotted are average of four independent yeast transformants \pm SD. (B) Cnb1-G2A exhibits increased sensitivity to FK506. *Cnb1Δ* yeast harboring the *CDRE-lacZ* reporter gene were transformed with plasmids expressing either Cnb1 or Cnb1-G2A as indicated and treated as described above, except that yeast were either unstimulated or stimulated (100 mM CaCl_2) during 4 hours growth in YPD prior to harvesting for β -galactosidase assays. Data plotted are average of four independent yeast transformants \pm SD.