

## **Supplementary data figure legends**

### **Figure S1**

NSCLC cell lines , A549 (A), H460 (B), H1299 (C) and MOR/P (D) were transfected with 0.1ug of VEGF promoter luciferase constructs in either normoxic (open bars) conditions or 1% [O<sub>2</sub>] hypoxic conditions (closed bars) for 20hrs and assayed for luciferase activity. All measurements represent the mean +/- SEM of three independent experiments.

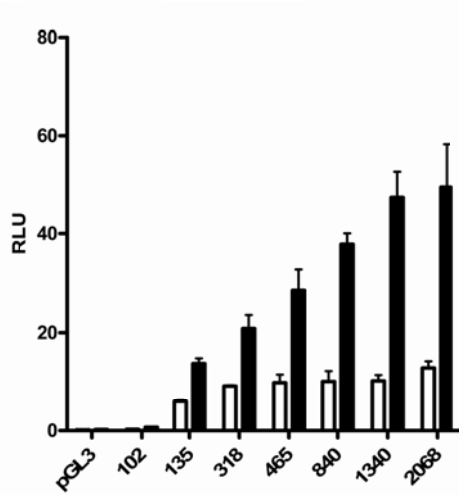
### **Figure S2**

NSCLC cell lines , A549 (A), H460 (B), H1299 (C) and MOR/P (D) were transfected with 0.1ug pGL4-HRE-LUC construct in either normoxic (open bars) conditions or 1% [O<sub>2</sub>] hypoxic conditions (closed bars) for 20hrs and assayed for luciferase activity. All measurements represent the mean +/- SEM of three independent experiments.

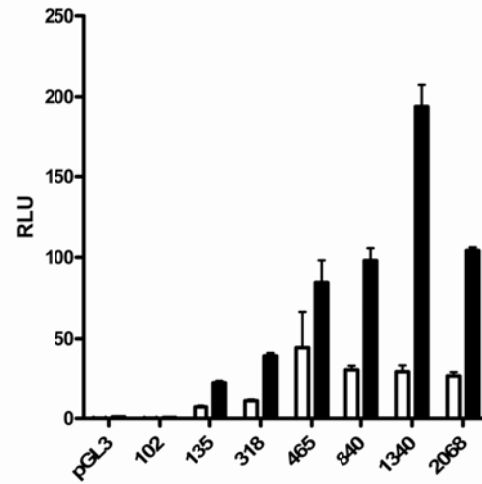
# Supplementary data ,S1

(VEGF promoter reporter , normoxia , hypoxia 20hr)

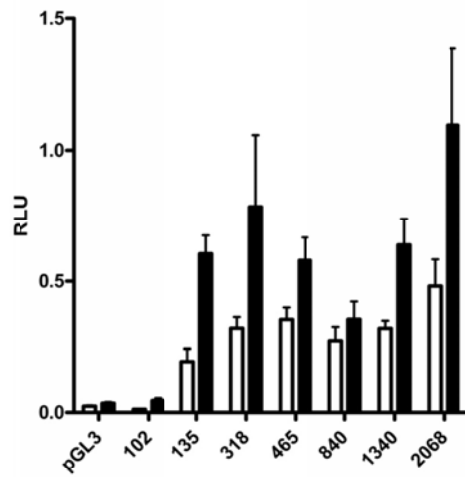
(A)



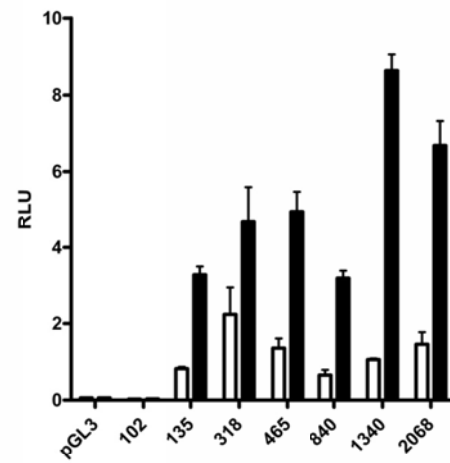
(B)



(C)



(D)



## Supplementary data , S2

(HRE-LUC response to hypoxia for 20hrs)

