

Additional file 1 - **Insulin immunolocalisation positive controls**

Selected imprinting of *INS* in the marsupial

Jessica M Stringer, Shunsuke Suzuki, Andrew J Pask, Geoff Shaw, Marilyn B Renfree

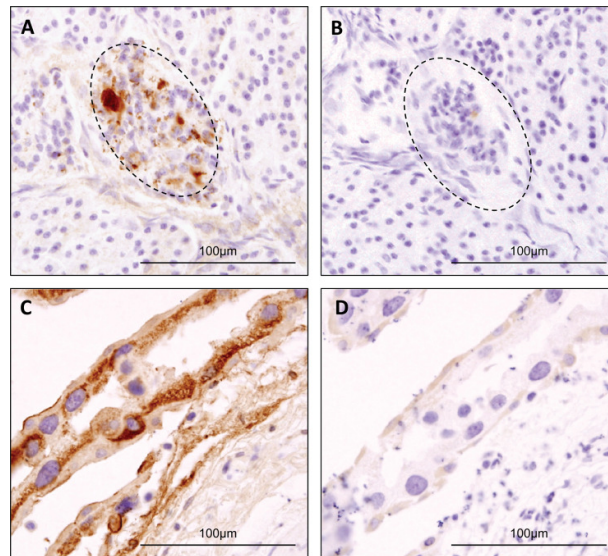


Figure S1. Immunolocalisation of insulin protein in the pancreas and placenta.

(A) Pancreas. Insulin (brown staining) was localised in the cytoplasm of the cells of the islets of Langerhans. (B) IgG negative control. (C) Placenta. Insulin was detected in the bilaminar yolk sac placenta as previously shown (Ager et al. 2007). (D) IgG negative control.