

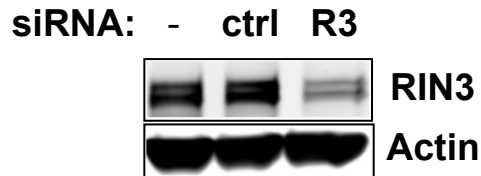
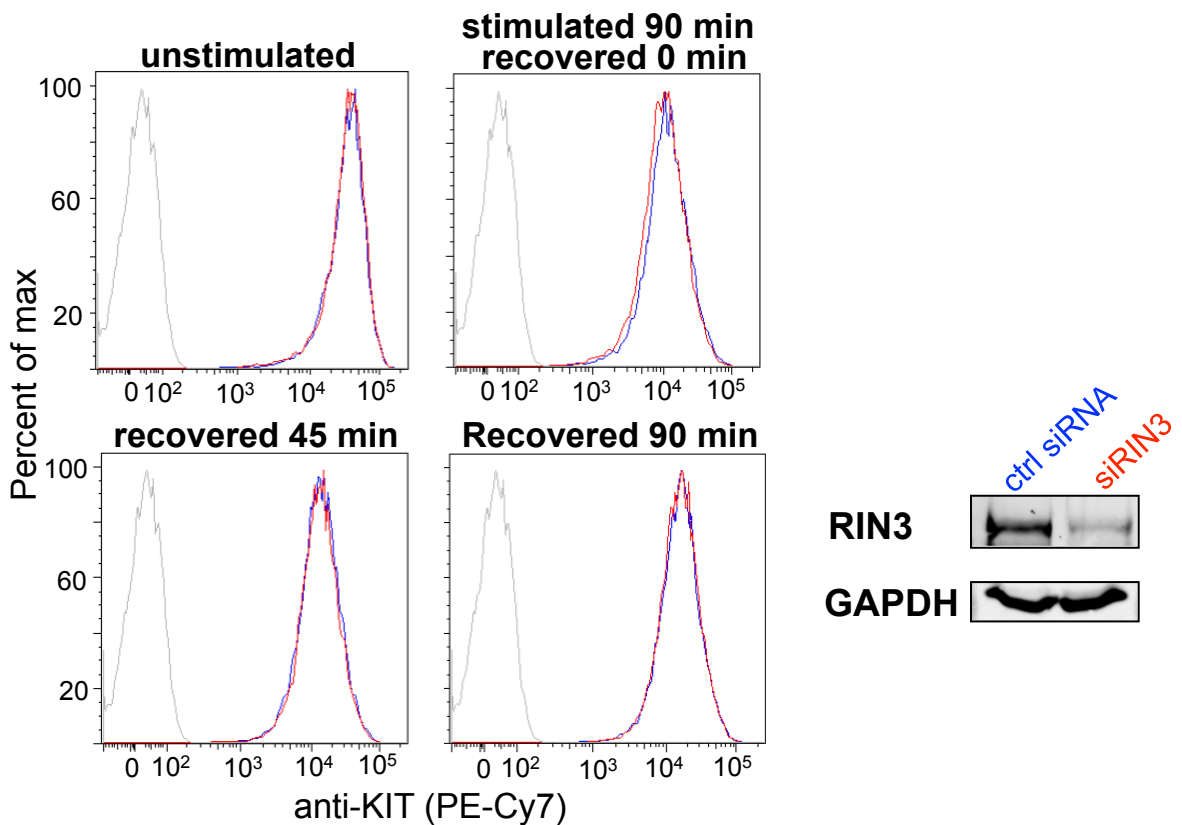
A**B**

Figure S1. *RIN3* silencing does not affect *KIT* surface recovery.

A. Representative blot comparing levels of RIN3 in mock, ctrl siRNA, and RIN3 siRNA transfected cells. Transfection with siRNA did not affect wild type levels of RIN3. **B.** Cells were transfected with control (blue) or RIN3 siRNA (red). Surface expression of KIT was measured by flow cytometry before stimulation (top left), after stimulation with 5 ng/ml SCF (top right) and at two time points of recovery in SCF free media (bottom panels). Gray line represents unstained control. Immunoblot indicates level of RIN3 in lysates.