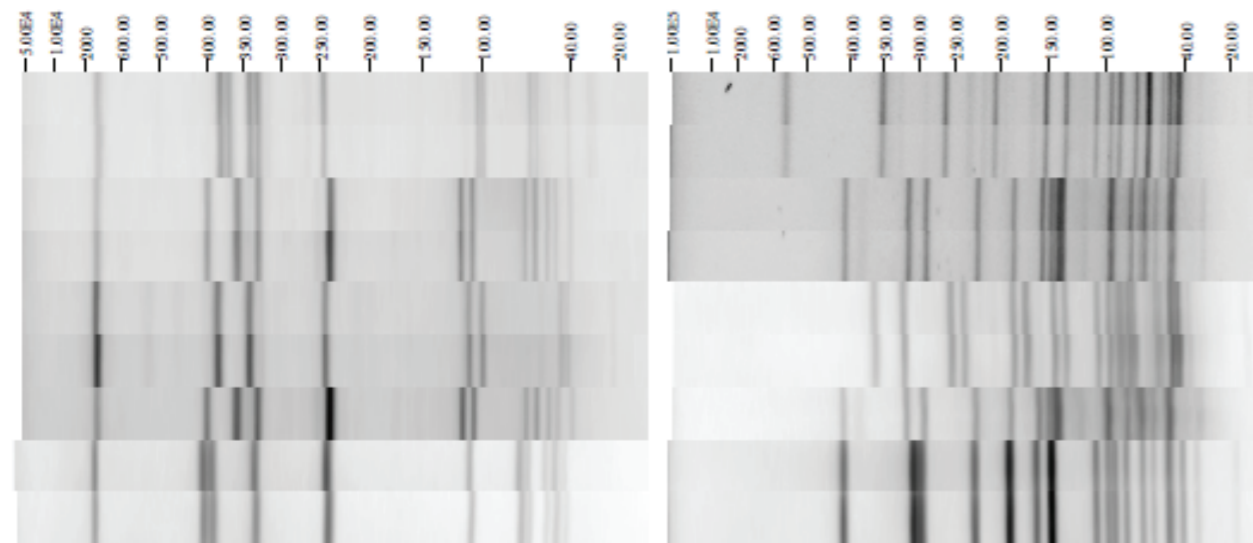


FIG. S1. PFGE types, *sigB* allelic types, and ribotype patterns of *L. monocytogenes* isolates obtained from two dairy farms.

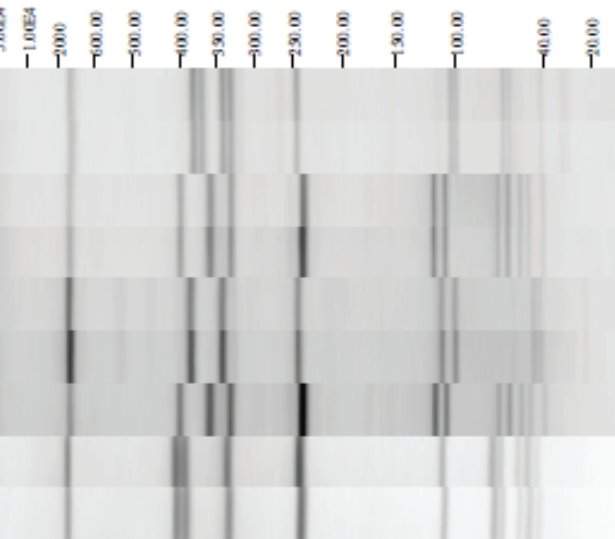
PFGE-AscI

PFGE-ApaI

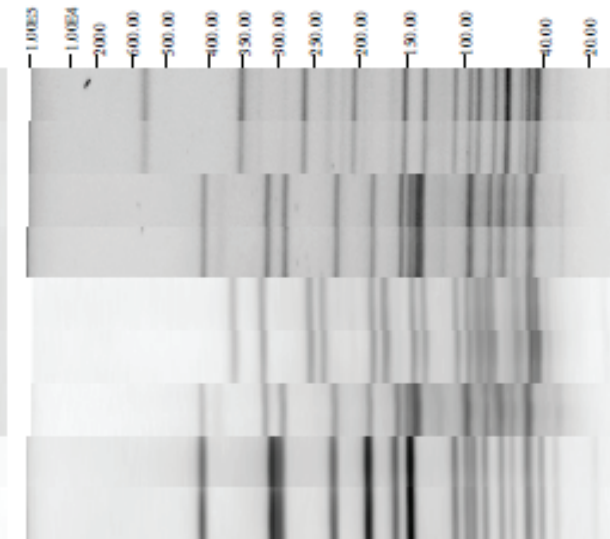


Isolate ID	Ribotype	Lineage	<i>SigB</i>	Sampling date	CU Pattern No_AscI	CU Pattern No_ApaI
			Allelic type			
FSL V1-001	DUP-1039C	II	57	10/2007 (Farm 1)	NYCU.GX6A16.0184	NYCU.GX6A12.0129
FSL V1-002	DUP-1039C	II	57	10/2007 (Farm 1)	NYCU.GX6A16.0184	NYCU.GX6A12.0129
FSL V1-003	DUP-1042C	I	58	01/2008 (Farm 1)	NYCU.GX6A16.0018	NYCU.GX6A12.0242
FSL V1-004	DUP-1042C	I	58	01/2008 (Farm 1)	NYCU.GX6A16.0018	NYCU.GX6A12.0242
FSL V1-005	DUP-1045A	II	57	01/2008 (Farm 1)	NYCU.GX6A16.0185	NYCU.GX6A12.0206
FSL V1-006	DUP-1045A	II	57	01/2008 (Farm 1)	NYCU.GX6A16.0185	NYCU.GX6A12.0206
FSL V1-007	DUP-1042C	I	58	01/2008 (Farm 1)	NYCU.GX6A16.0018	NYCU.GX6A12.0242
FSL V1-117	DUP-1052A	I	63	06/2009 (Farm 2)	NYCU.GX6A16.0011	NYCU.GX6A12.0282
FSL V1-118	DUP-1052A	I	63	06/2009 (Farm 2)	NYCU.GX6A16.0011	NYCU.GX6A12.0282

PFGE-AscI

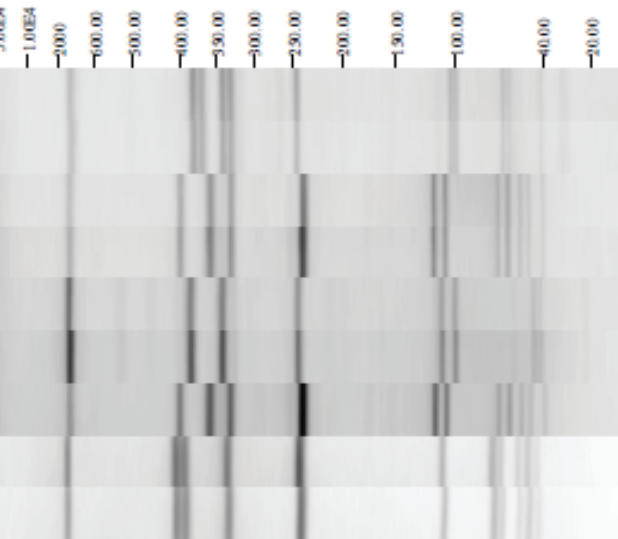


PFGE-ApaI

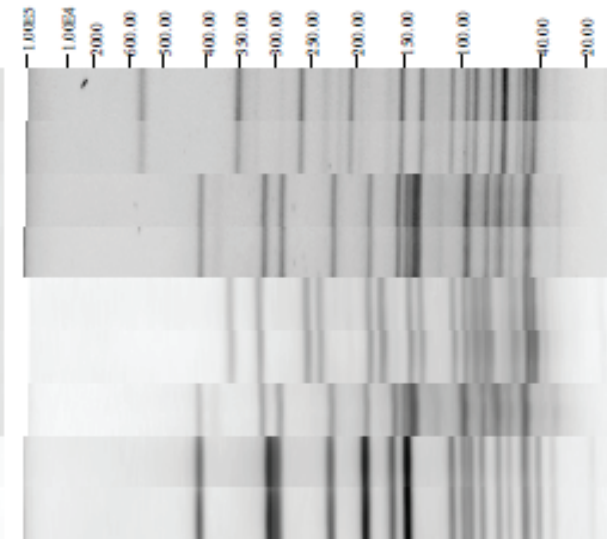


Isolate ID	Ribotype	Lineage	<i>SigB</i>	Sampling date	CU Pattern No_AscI	CU Pattern No_ApaI
			Allelic type			
FSL V1-001	DUP-1039C	II	57	10/2007 (Farm 1)	NYCU.GX6A16.0184	NYCU.GX6A12.0129
FSL V1-002	DUP-1039C	II	57	10/2007 (Farm 1)	NYCU.GX6A16.0184	NYCU.GX6A12.0129
FSL V1-003	DUP-1042C	I	58	01/2008 (Farm 1)	NYCU.GX6A16.0018	NYCU.GX6A12.0242
FSL V1-004	DUP-1042C	I	58	01/2008 (Farm 1)	NYCU.GX6A16.0018	NYCU.GX6A12.0242
FSL V1-005	DUP-1045A	II	57	01/2008 (Farm 1)	NYCU.GX6A16.0185	NYCU.GX6A12.0206
FSL V1-006	DUP-1045A	II	57	01/2008 (Farm 1)	NYCU.GX6A16.0185	NYCU.GX6A12.0206
FSL V1-007	DUP-1042C	I	58	01/2008 (Farm 1)	NYCU.GX6A16.0018	NYCU.GX6A12.0242
FSL V1-117	DUP-1052A	I	63	06/2009 (Farm 2)	NYCU.GX6A16.0011	NYCU.GX6A12.0282
FSL V1-118	DUP-1052A	I	63	06/2009 (Farm 2)	NYCU.GX6A16.0011	NYCU.GX6A12.0282

PFGE-AscI



PFGE-ApaI



Isolate ID	Ribotype	Lineage	<i>SigB</i>	Sampling date	CU Pattern No_AscI	CU Pattern No_ApaI
			Allelic type			
FSL V1-001	DUP-1039C	II	57	10/2007 (Farm 1)	NYCU.GX6A16.0184	NYCU.GX6A12.0129
FSL V1-002	DUP-1039C	II	57	10/2007 (Farm 1)	NYCU.GX6A16.0184	NYCU.GX6A12.0129
FSL V1-003	DUP-1042C	I	58	01/2008 (Farm 1)	NYCU.GX6A16.0018	NYCU.GX6A12.0242
FSL V1-004	DUP-1042C	I	58	01/2008 (Farm 1)	NYCU.GX6A16.0018	NYCU.GX6A12.0242
FSL V1-005	DUP-1045A	II	57	01/2008 (Farm 1)	NYCU.GX6A16.0185	NYCU.GX6A12.0206
FSL V1-006	DUP-1045A	II	57	01/2008 (Farm 1)	NYCU.GX6A16.0185	NYCU.GX6A12.0206
FSL V1-007	DUP-1042C	I	58	01/2008 (Farm 1)	NYCU.GX6A16.0018	NYCU.GX6A12.0242
FSL V1-117	DUP-1052A	I	63	06/2009 (Farm 2)	NYCU.GX6A16.0011	NYCU.GX6A12.0282
FSL V1-118	DUP-1052A	I	63	06/2009 (Farm 2)	NYCU.GX6A16.0011	NYCU.GX6A12.0282