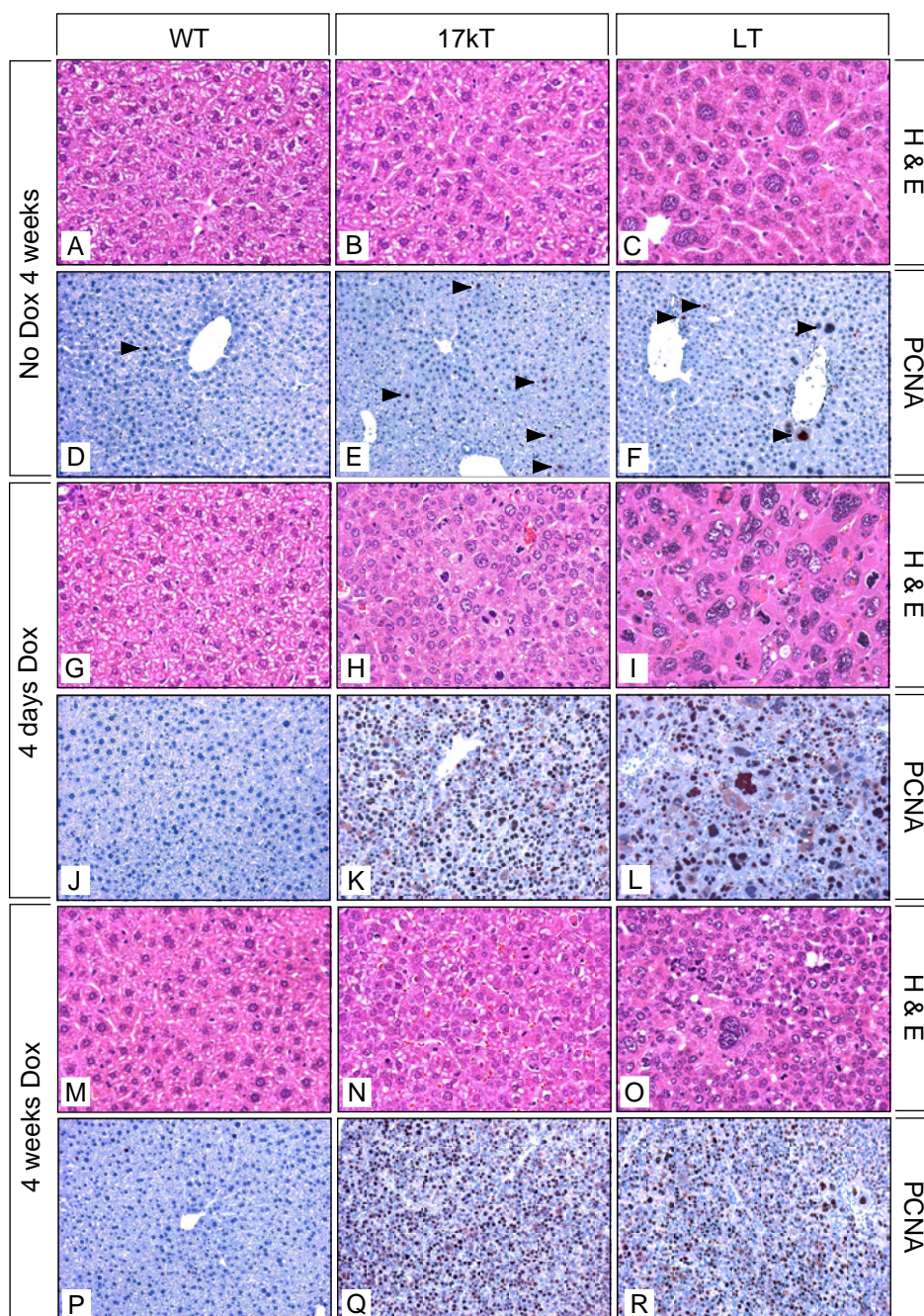


## Supplementary Figure S4



**Figure S4.** Histopathology and IHC analysis for PCNA in livers of WT and ApoE-rtTA:TRE2-TAG transgenic mice provided with regular drinking water (A-F) or water supplemented with dox for 4 days (G-L) or 4 weeks (M-R). Note enlarged hepatocyte nuclei in LT livers in the absence of dox (C), as well as aberrant nuclear shape and multinucleated hepatocytes after 4 days on dox (I). Arrowheads denote rare PCNA-positive hepatocytes (AEC chromagen, red/brown) in WT (D), 17kT (E) and LT (F) livers in the absence of dox. Hematoxylin counterstain (blue). H&E, magnification x 224 to highlight nuclear morphology; PCNA, magnification x 112 to highlight overall proliferation rates.