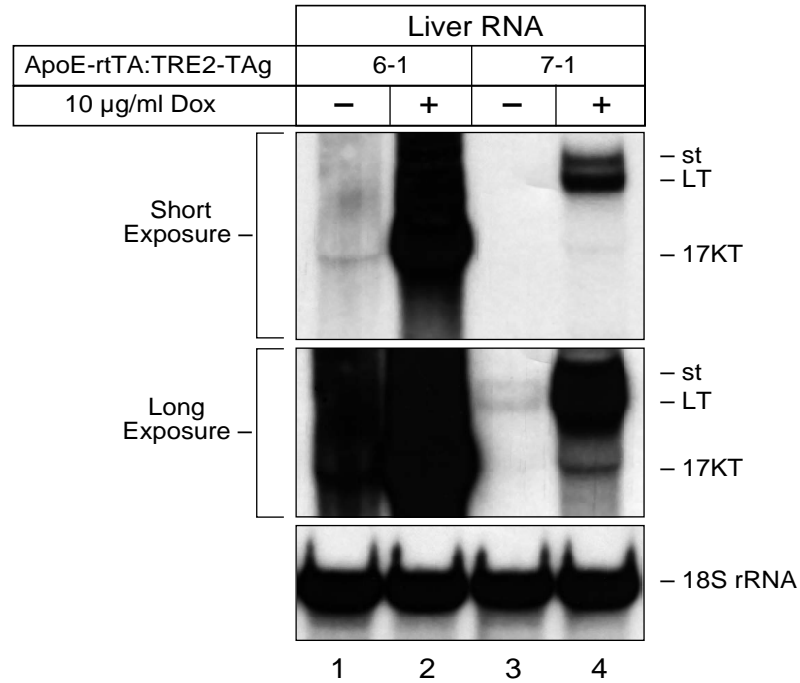


## Supplementary Figure S5



**Figure S5.** Northern blot analysis of total liver RNA isolated from transgenic mice provided with regular or dox-supplemented drinking water showing that viral oncoprotein expression is not completely shut off in the absence of dox. Blots were probed with a probe comprising the entire 2.7kb SV40 early region, followed by stripping and re-probing with an 18S rRNA-specific probe.