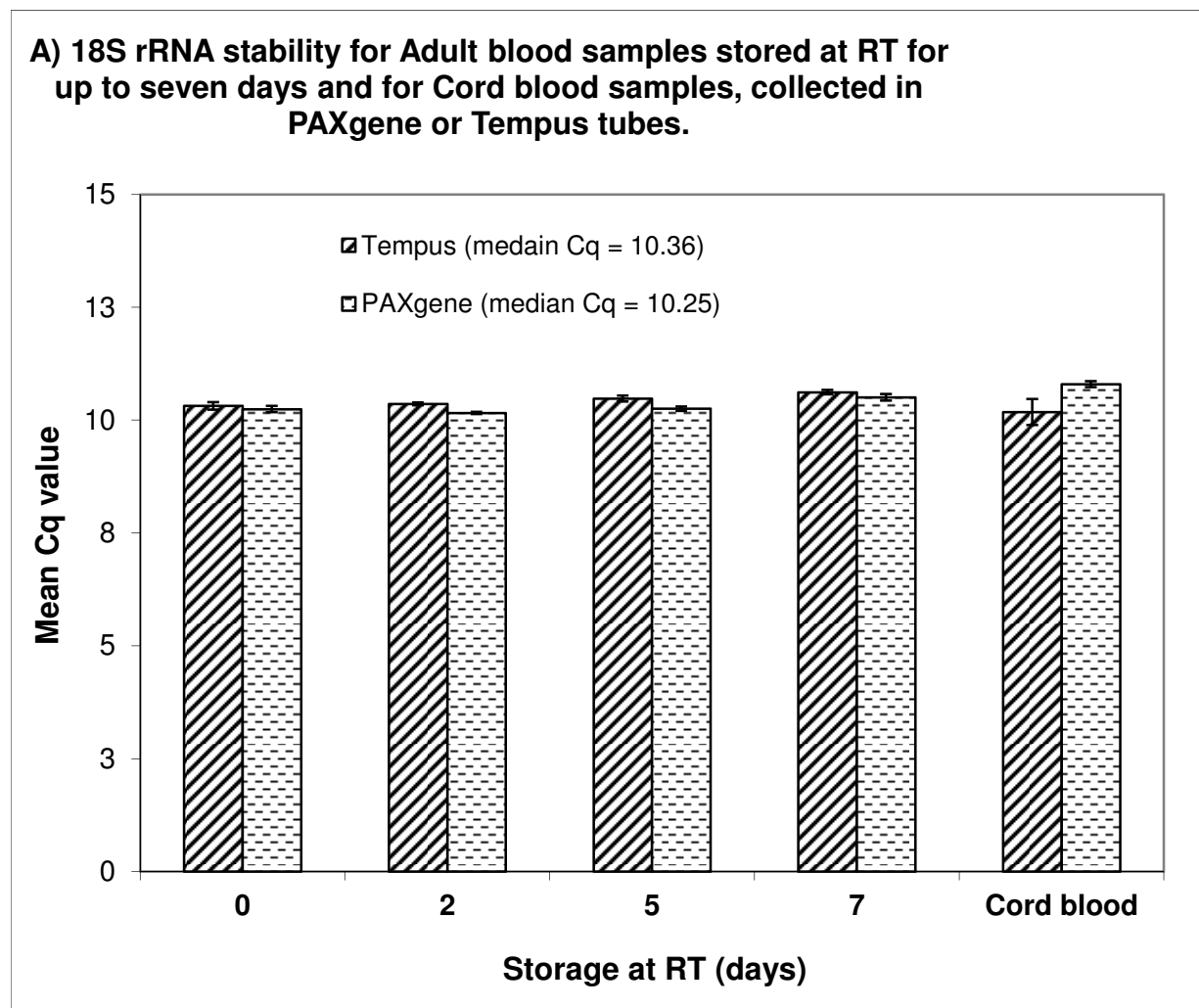
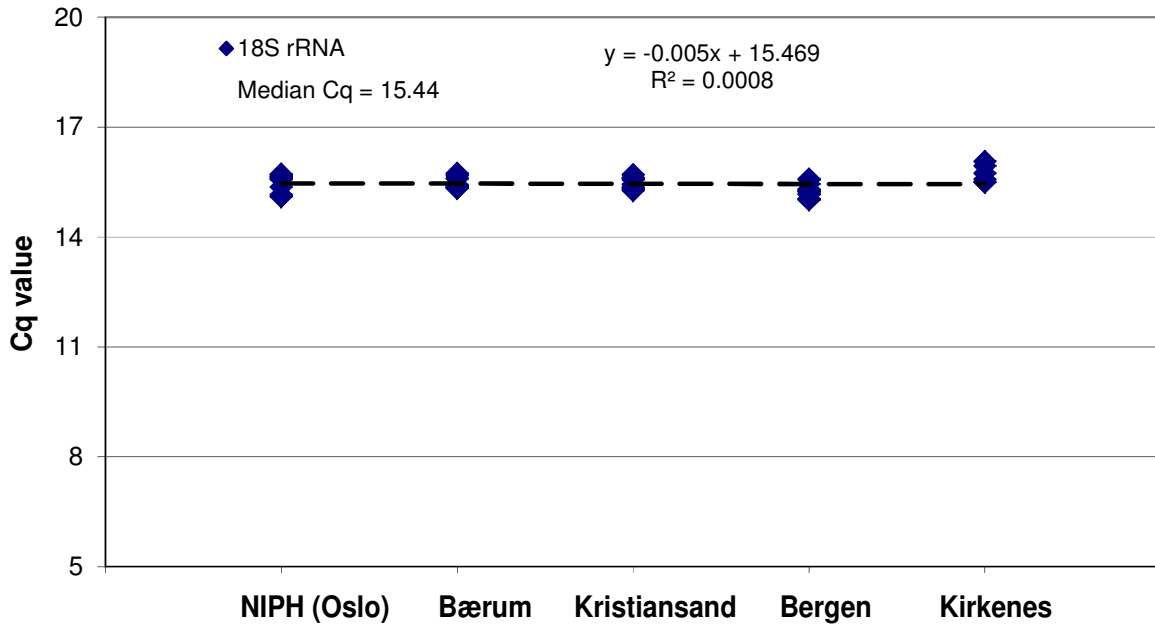


Additional file 1- The evaluation of 18S rRNA expression stability

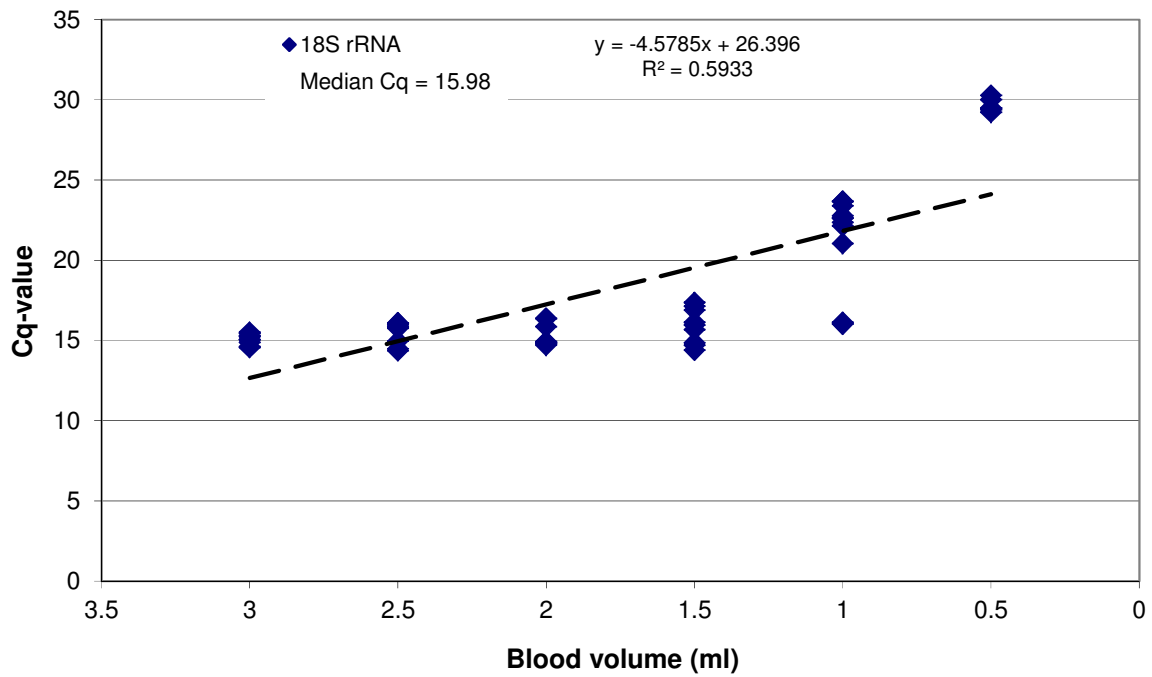
A) Comparison of PAXgene tube-collected samples against the Tempus tube-collected samples: The C_q – values for 18S rRNA were relatively stable following the storage of the tubes for up to seven days at room temperature for both tubes; B) Evaluation of 18S rRNA stability for transportation QC samples: The C_q – values for 18S rRNA were relatively stable following the transportation; C) Suboptimal blood volume in the Tempus tubes on 18S rRNA expression stability for adult blood samples: Suboptimal blood volume collected in the tube has a significant effects on 18S rRNA expression stability; and D) Suboptimal blood volume in the Tempus tubes on 18S rRNA expression stability for cord blood samples: Suboptimal blood volume collected in the tube has some effects on 18S rRNA expression stability. Each bar represents the average C_q-values and the error bar indicates \pm SE.



B) 18S rRNA stability for transportation QC



C) 18S rRNA stability for adult blood samples



D) 18S rRNA stability for cord blood samples

