

Supplemental Figure 2

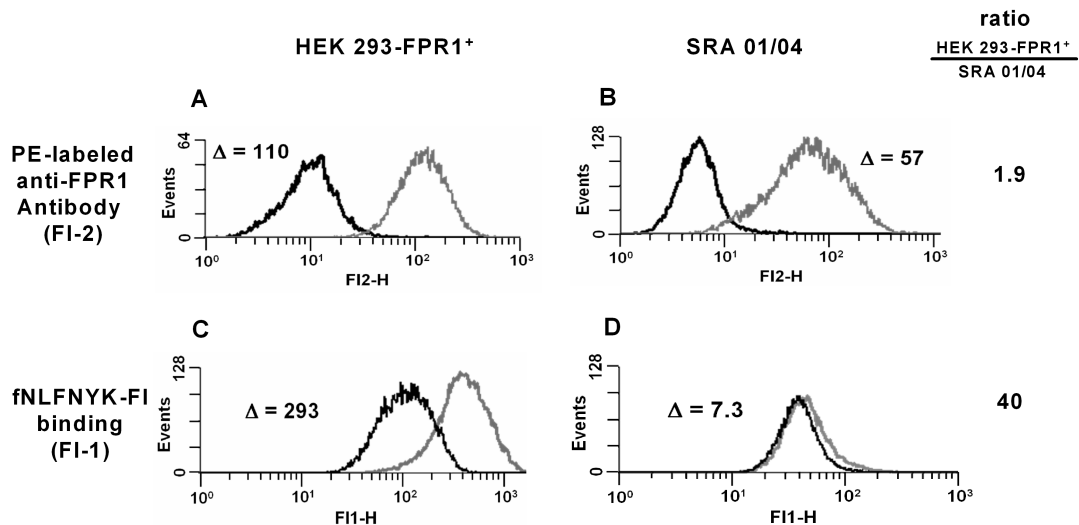


Figure S2: FPR1 adopts distinct states in lens epithelial cells and FPR1-transfected HEK 293 cells: evidence from flow cytometry. A, B) Staining of HEK 293-FPR1⁺ cells (A) and SRA 01/04 cells (B) with anti-FPR1. Gray, anti-FPR1; black, isotype control. C, D) Specific binding of fNLFNYK-FI (10 nM) to HEK 293-FPR1⁺ cells (C) and SRA 01/04 lens epithelial cells (D). Gray, total binding; black, non-specific binding (in the presence of 10 μM of fMLF). Δ represents the difference between anti-FPR1 staining and isotype control background (A, B) or between total- and non-specific binding (C, D). The ratio of Δ(HEK 293-FPR1⁺)/Δ(SRA 01/04) is shown on the right. The data are from one representative experiment that was reproduced once.