

SUPPLEMENTARY MATERIAL

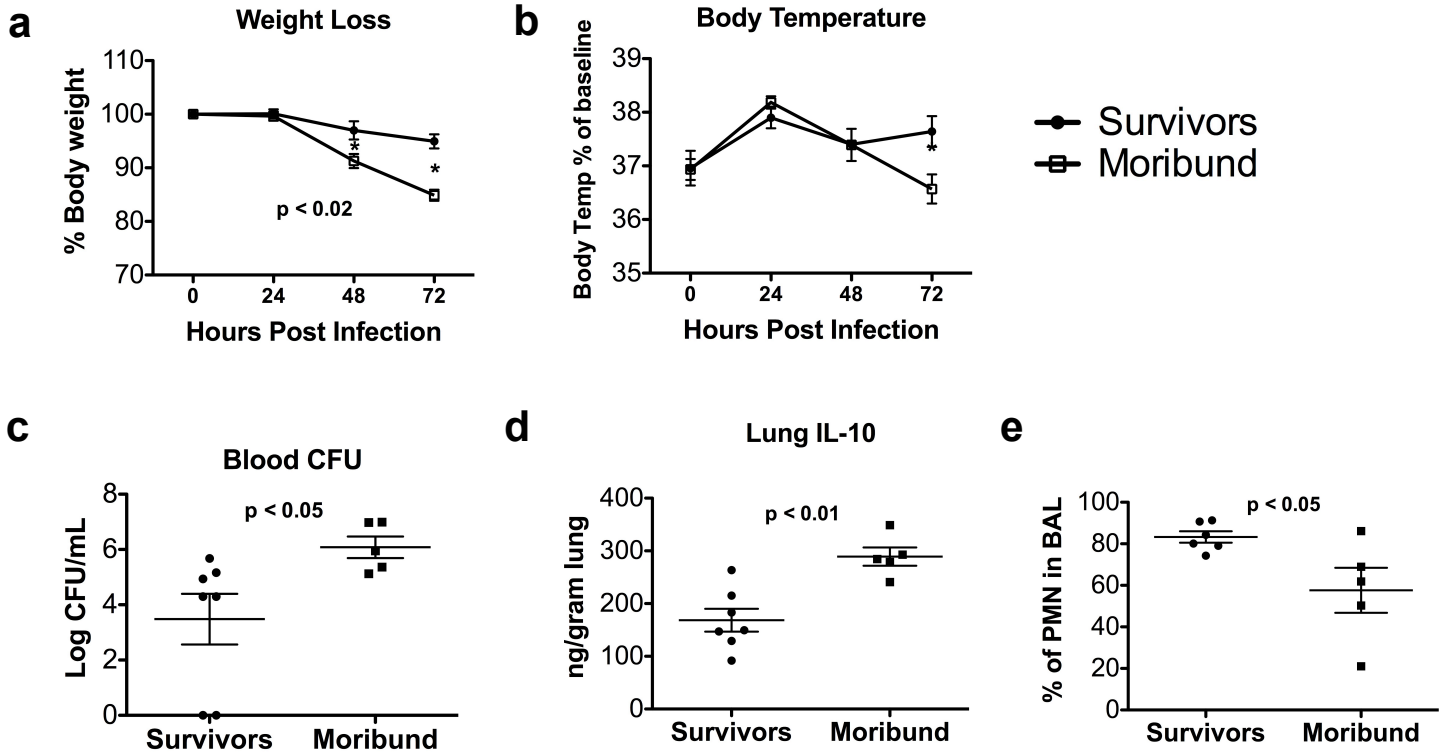


Figure S1. Survivors display better parameters of health compared to moribund mice both infected with 1000 CFU of bacteria. At 72 h post infection with 1000 CFU of *K. pneumonia*, 50% of the sick/moribund mice showed (a) increased weight loss and (b) decreased body temperature. (c) Increased bacterial dissemination, as measured by estimation of log CFU/mL in blood, was also observed in mice displaying increased morbidity, which correlated with (d) increased lung IL-10 and (e) decreased PMN in BAL. Results are representative of 2 independent experiments.

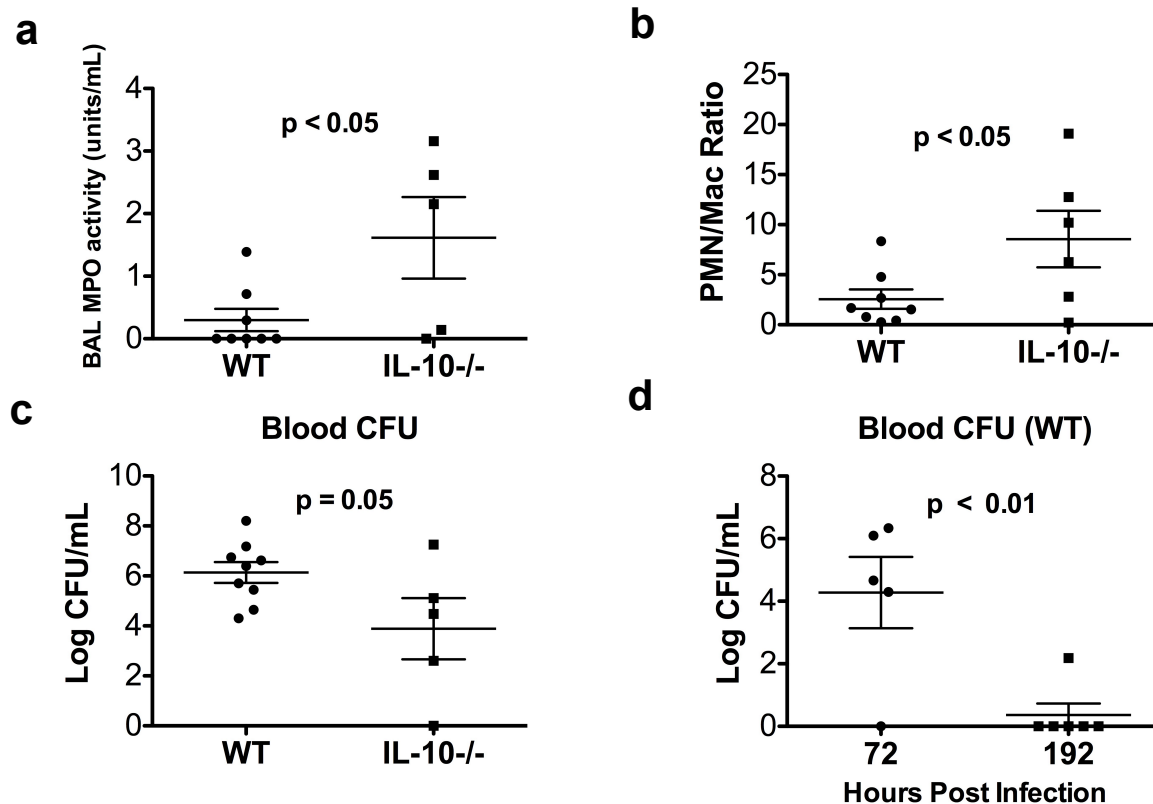


Figure S2. Improved bacterial clearance and increased PMN recruitment in IL-10^{-/-} mice. WT and IL-10^{-/-} mice were infected with 1000 CFU of *K. pneumoniae*. At 72 h post-infection, (a) MPO activity was measured in cell free BAL fluid, (b) PMN and Macrophage (Mac) numbers in BAL cells were assessed (expressed as a ratio), (c) bacterial dissemination was estimated, and (d) Clearance of systemic bacteria in surviving WT mice by day 8 after infection with 1000 CFU. Similar results were obtained in 2 independent experiments.

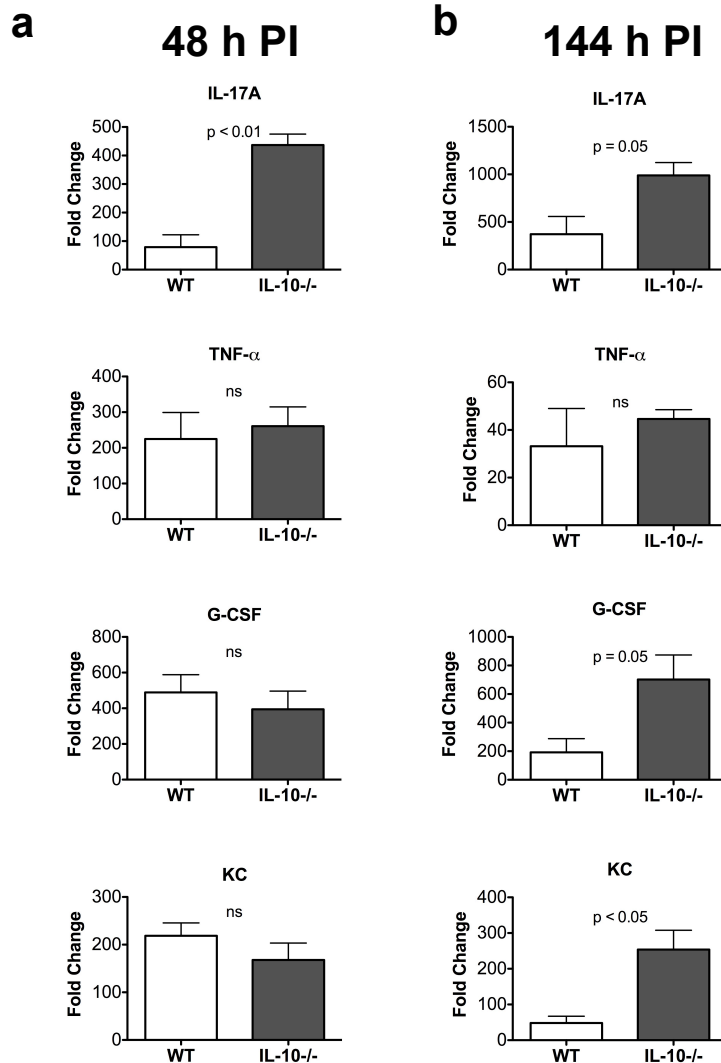


Figure S3. Increased expression of cytokines and chemokines associated with neutrophil recruitment in IL-10^{-/-} mice. WT and IL-10^{-/-} mice were infected with 1000 CFU of *K. pneumoniae*. Lung mRNA was analyzed for expression of cytokines and chemokines by qRT-PCR techniques at 48 and 144 h post infection. Data shown are representative of 2 independent experiments.

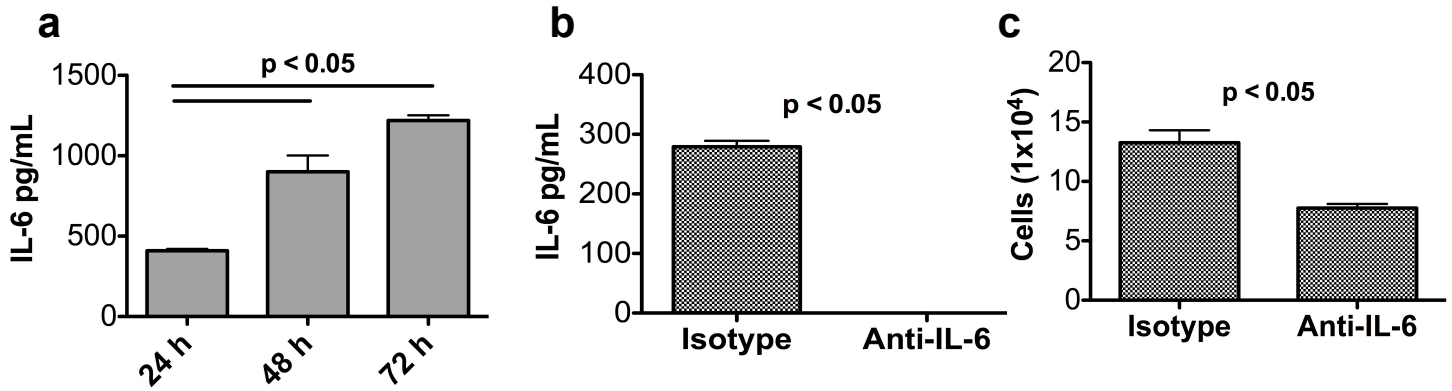


Figure S4. Gr1^{int} cells produce IL-6 and neutralization of IL-6 reduces the number of Gr1^{int} cells cultured ex vivo. (a) 1 μ g of LPS was intratracheally administered every 24 h. Mice were sacrificed at the indicated time points. Gr1^{int} cells were isolated, cultured overnight and cell free supernatants were analyzed by ELISA for IL-6. (b) Antibody mediated neutralization of IL-6 in culture resulted in (c) fewer live Gr1^{int} cells after 24 h culture as assessed by trypan blue exclusion. The experiment was repeated with similar results.

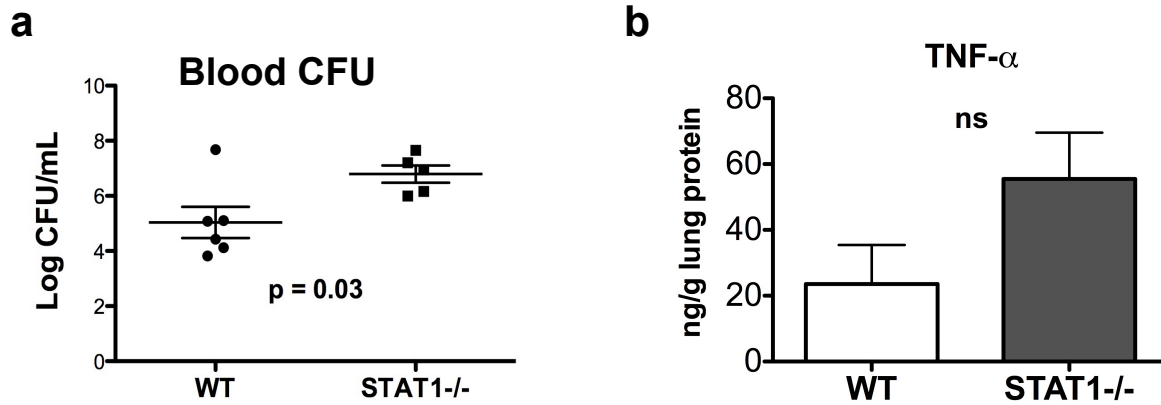


Figure S5. STAT1^{-/-} mice show increased systemic bacteria at 72 h post-infection. (a) WT and STAT1^{-/-} mice were infected with 1000 CFU of *K. pneumoniae*. CFU in the blood was determined 72 h post infection and (b) TNF- α was measured in lung homogenates by multiplex. Similar data were obtained in 2 independent experiments.