

SUPPLEMENTARY DATA

Supplementary Table 1. Risk factor-treatment interaction analyses for myocardial infarction.

Variable Sub-grouping at baseline (N Surgery/N Control)	Relative treatment effects				NNT*
	HR	95% C.I. for HR	P value for HR	P value for interaction†	
Total	0.59	0.38-0.92	0.018		16
Gender				0.10	
Men (N 142/104)	0.42	0.23-0.76	0.004		7
Women (N 203/158)	0.84	0.43-1.63	0.60		111
Previous MI, No/Yes				0.68	
No (N 327/251)	0.61	0.38-0.98	0.041		21
Yes (N 18/11)	0.53	0.17-1.69	0.28		2
Age, years				0.31	
≤49.8 (N 185/119)	0.76	0.37-1.55	0.44		143
>49.8 (N 160/143)	0.54	0.31-0.95	0.032		10
BMI, kg/m²				0.12	
≤40.6 (N 151/153)	0.43	0.22-0.84	0.01		9
>40.6 (N 194/109)	0.78	0.42-1.47	0.44		250
Weight, kg				0.90	
≤118.4 (N 147/157)	0.52	0.26-1.01	0.06		14
>118.4 (N 198/105)	0.62	0.34-1.13	0.12		16
Waist, cm				0.88	
≤120 (N 150/153)	0.51	0.26-1.01	0.05		13
>120 (N 193/109)	0.63	0.35-1.14	0.13		16
Smoking, No/Yes				0.27	
No (N 259/203)	0.66	0.38-1.13	0.13		32
Yes (N 85/54)	0.44	0.21-0.94	0.030		5
Insulin, mU/L				0.54	
≤23 (N 154/147)	0.77	0.40-1.47	0.42		19
>23 (N 107/193)	0.43	0.23-0.80	0.007		13
Total cholesterol, mg/dL				0.02	
≤224 (N 173/133)	1.26	0.56-2.26	0.58		-
>224 (N 171/129)	0.39	0.23-0.68	0.001		6
Triglycerides, mg/dL				0.02	
≤203 (N 169/137)	1.03	0.49-2.17	0.94		-
>203 (N 175/125)	0.39	0.22-0.69	0.001		7
HDL cholesterol, mg/dL				0.11	
≤47 (N 161/127)	0.54	0.30-0.98	0.040		14
>47 (N 159/117)	0.78	0.37-1.64	0.51		32
Systolic blood pressure, mmHg				0.17	
≤145 (N 162/157)	0.34	0.17-0.71	0.004		9
>145 (N 182/105)	0.81	0.44-1.49	0.51		71
Diastolic blood pressure, mmHg				0.11	
≤90 (N 196/181)	0.38	0.19-0.78	0.008		12
>90 (N 148/81)	0.65	0.36-1.2	0.17		15
Glucose-lowering medication, No/Yes				0.15	
No (N 180/124)	0.41	0.20-0.85	0.020		15
Yes (N 165/138)	0.78	0.45-1.34	0.36		20
Diabetes duration, years				0.64	
≤1 (N 199/129)	0.43	0.21-0.88	0.02		17
>1 (N 146/133)	0.82	0.47-1.42	0.47		22

Risk factor-treatment interactions for myocardial infarction (MI) events in subgroups and NNT, number of subjects who need to be operated to prevent one MI event over 15 years.

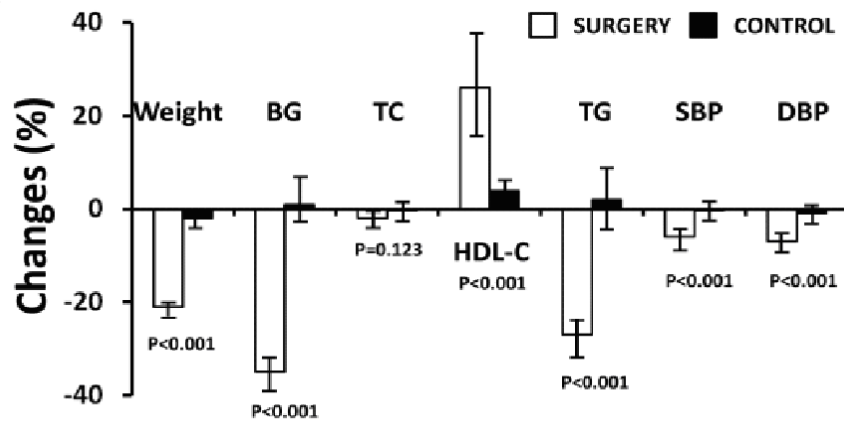
†For each continuous variable, the test of interaction was calculated using the original continuous variable. Dichotomous variables could have one of two values (e.g., men/women, diabetes yes/no).

*No significant difference in any of the subgroups with respect to number of individuals needed to operate to prevent one event.

Abbreviations: HR, hazard ratio; CI, confidence interval; NNT number needed to treat; N, numbers; BMI, body-mass index; HDL, high-density lipoprotein.

SUPPLEMENTARY DATA

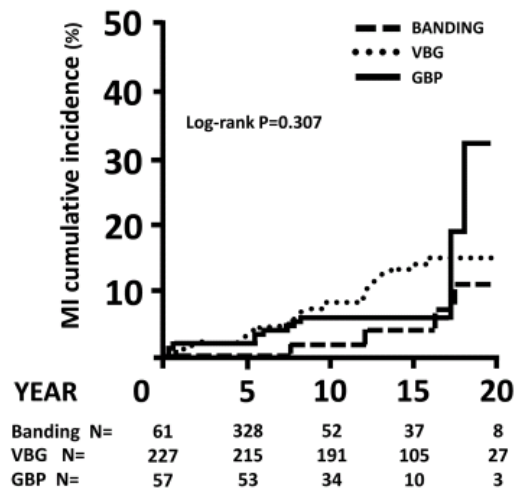
Supplementary Figure 1. Mean 2-year changes in clinical characteristics and metabolic parameters of SOS participants with type 2 diabetes at baseline.



Mean changes are shown as bar graph and 95% confidence interval. P values are calculated with a linear regression model adjusted for age, gender and BMI, except for weight in which BMI was not included as a covariate.

Abbreviations: SOS, Swedish obese subjects; BG, blood glucose; TC, total cholesterol; HDL-C, high-density lipoprotein cholesterol; TG, triglycerides; SBP, systolic blood pressure; DBP, diastolic blood pressure.

Supplementary Figure 2. Cumulative incidence of myocardial infarction in subjects with diabetes at baseline from the SOS surgery group.



A total of 4/61 subjects in the banding group had myocardial infarction, compared to 29/227 in the vertical gastroplasty group and 5/57 in the gastric bypass group.

Abbreviations: SOS, Swedish obese subjects; VBG, vertical gastroplasty; GBP, gastric bypass; N, number.