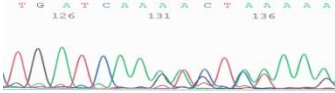
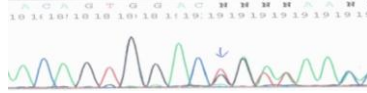


Additional file 4: Chromatographs of the 15 novel mutations

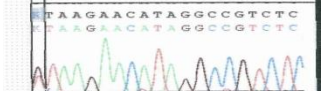
Exon 3: c.356_357delTT



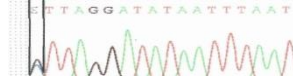
Exon 20: c.1983_1985delinsGG



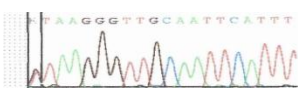
Intron 9: c.984+1G>T



Intron 20: c.2013+1G>C



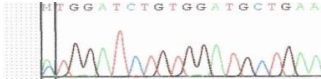
Intron 11: c.1140+1G>T



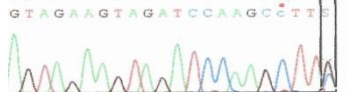
Intron 24: c.2496+4_2496+5delinsGTAAC



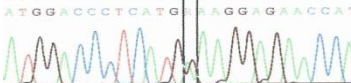
Exon 14: c.1313A>C



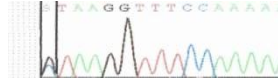
Exon 24: c.2496G>C



Exon 14: c.1376G>A



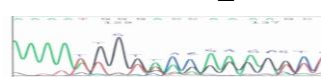
Intron 25: c.2613+1G>C



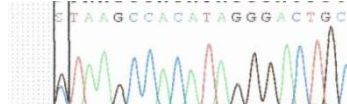
Exon 16: c.1544_1545delTA



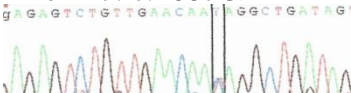
Exon 17: c.1665_1666insA



Intron 26: c.2707+1G>C



Exon 17: c.1687C>T



Exon 27: c.2713C>T

