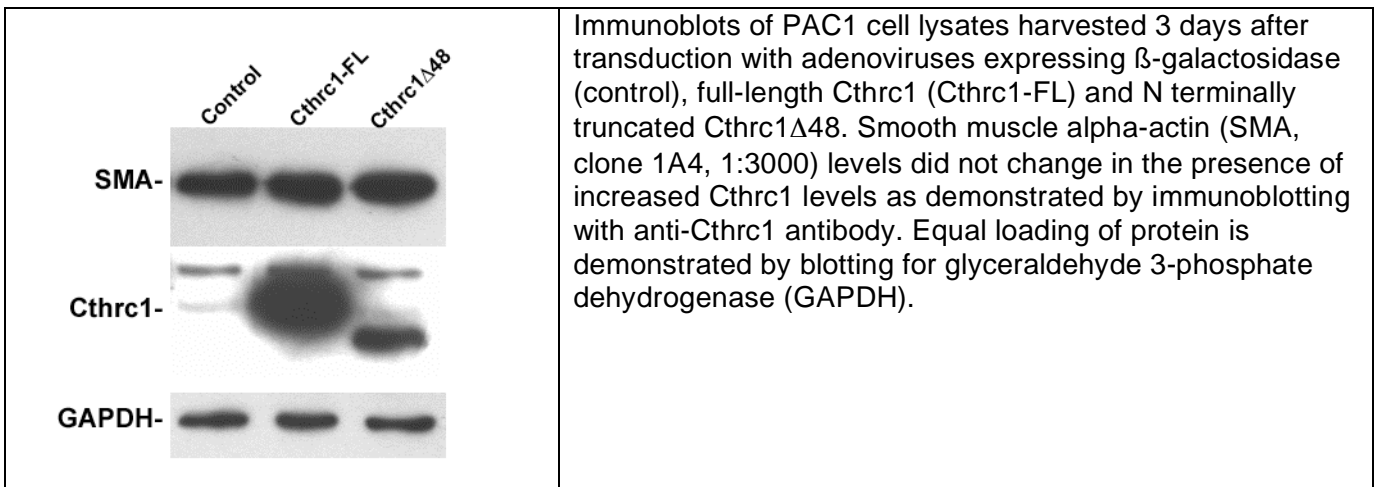


Photomicrographs of immunohistochemistry performed on E9.5 mouse embryos and yolk sacs are shown. **(A)** Expression of smooth muscle alpha-actin (anti-SMA) in the atrial myocardium (am) and dorsal aorta (da) is shown. **(B)** The anti-pro antibody reveals expression of *Cthrc1* in the dorsal aorta but not the atrial myocardium. **(C)** Higher magnification of the dorsal aorta (da) and **(D)** a yolk sac vessel shows *Cthrc1* in the mural cells. Immunoreactivity in brown, nuclear counterstain with hematoxylin. Original magnification: A, B 200x; C, D 400x.



Immunoblots of PAC1 cell lysates harvested 3 days after transduction with adenoviruses expressing β -galactosidase (control), full-length *Cthrc1* (*Cthrc1*-FL) and N terminally truncated *Cthrc1* Δ 48. Smooth muscle alpha-actin (SMA, clone 1A4, 1:3000) levels did not change in the presence of increased *Cthrc1* levels as demonstrated by immunoblotting with anti-*Cthrc1* antibody. Equal loading of protein is demonstrated by blotting for glyceraldehyde 3-phosphate dehydrogenase (GAPDH).