

Supplementary Information

Figure S1. ^1H -NMR spectrum of compound 5 .	2
Figure S2. COSY spectrum of compound 5 .	3
Figure S3. HSQC spectrum of compound 5 .	4
Figure S4. HMBC spectrum of compound 5 .	5
Figure S5. ^{13}C -NMR spectrum of compound 5 .	6
Figure S6. HRESI mass spectrum of compound 5 .	7
Figure S7. ^1H -NMR spectrum of compound 8 .	8
Figure S8. COSY spectrum of compound 8 .	9
Figure S9. HSQC spectrum of compound 8 .	10
Figure S10. HMBC spectrum of compound 8 .	11
Figure S11. HRESI mass spectrum of compound 8 .	12
Figure S12. ^{13}C -NMR spectrum of compound 8 .	13
Figure S13. Minimum Energy Conformations for <i>S</i> - 5 .	14
Figure S14. Calculated ECD of <i>S</i> - 5 at the B3LYP/6-31G **.	15
Table S1. Conformational Analysis of <i>S</i> - 5 conformers in methanol.	16

Figure S1. $^1\text{H-NMR}$ spectrum of compound 5.

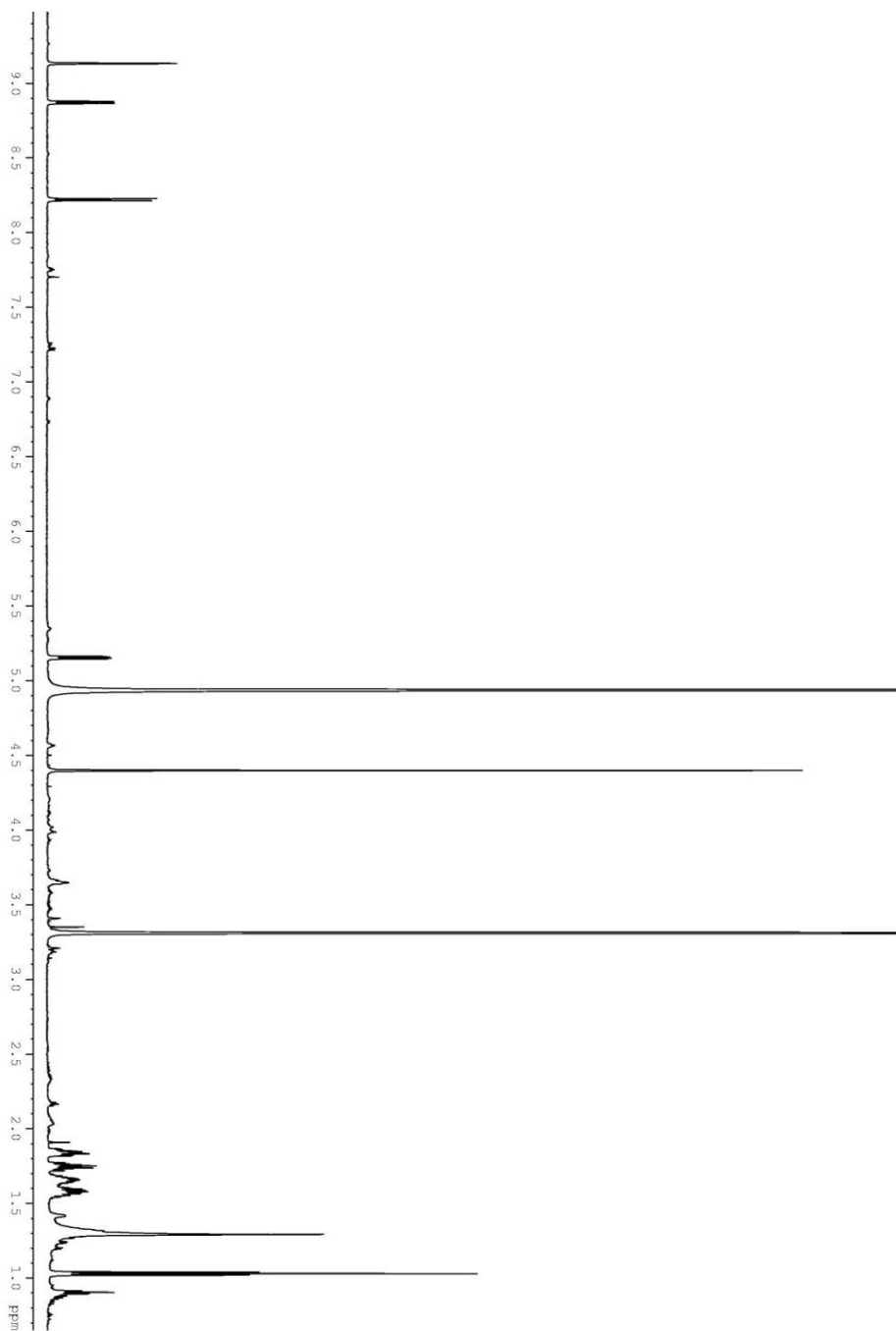


Figure S2. COSY spectrum of compound 5.

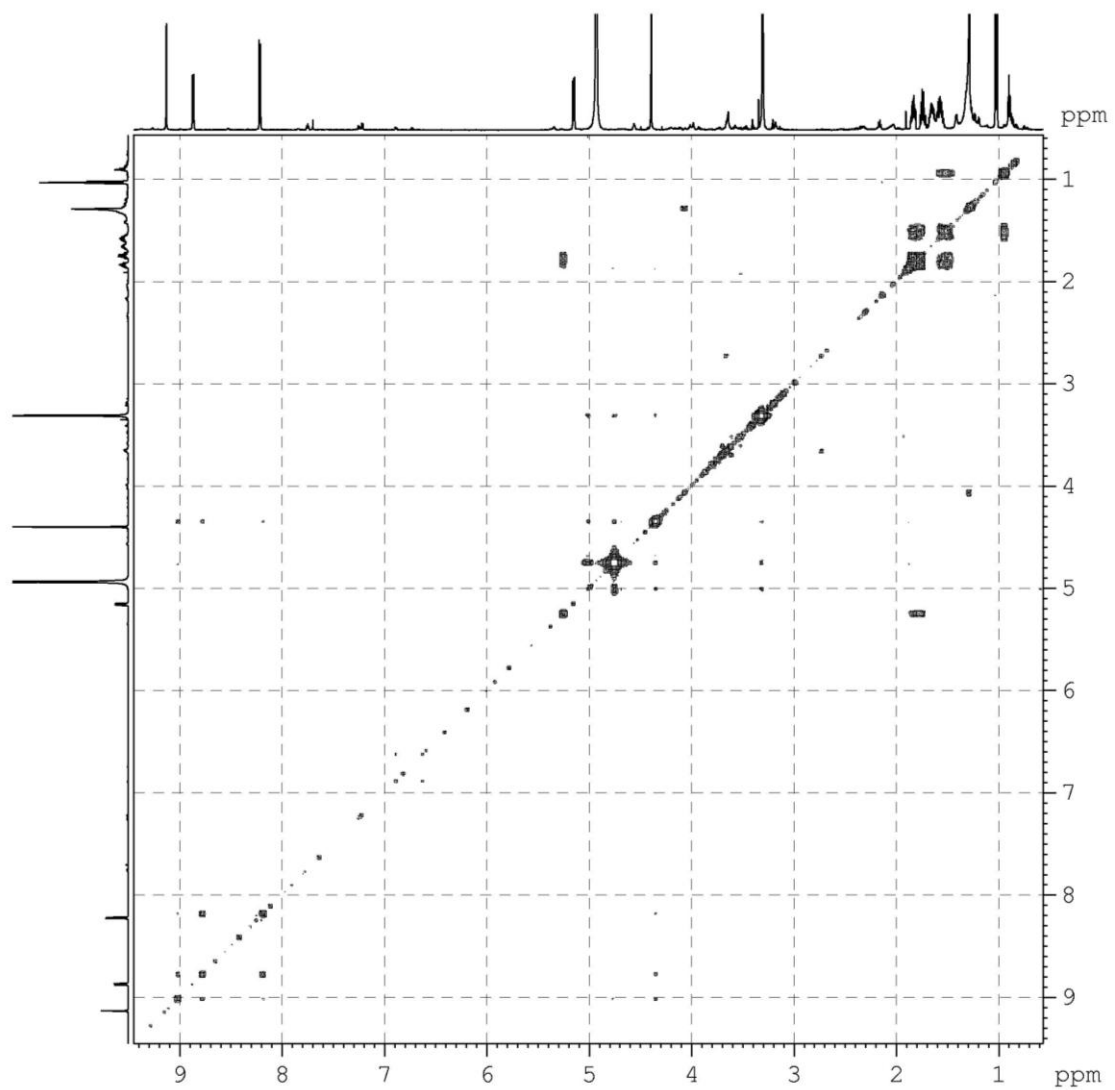


Figure S3. HSQC spectrum of compound 5.

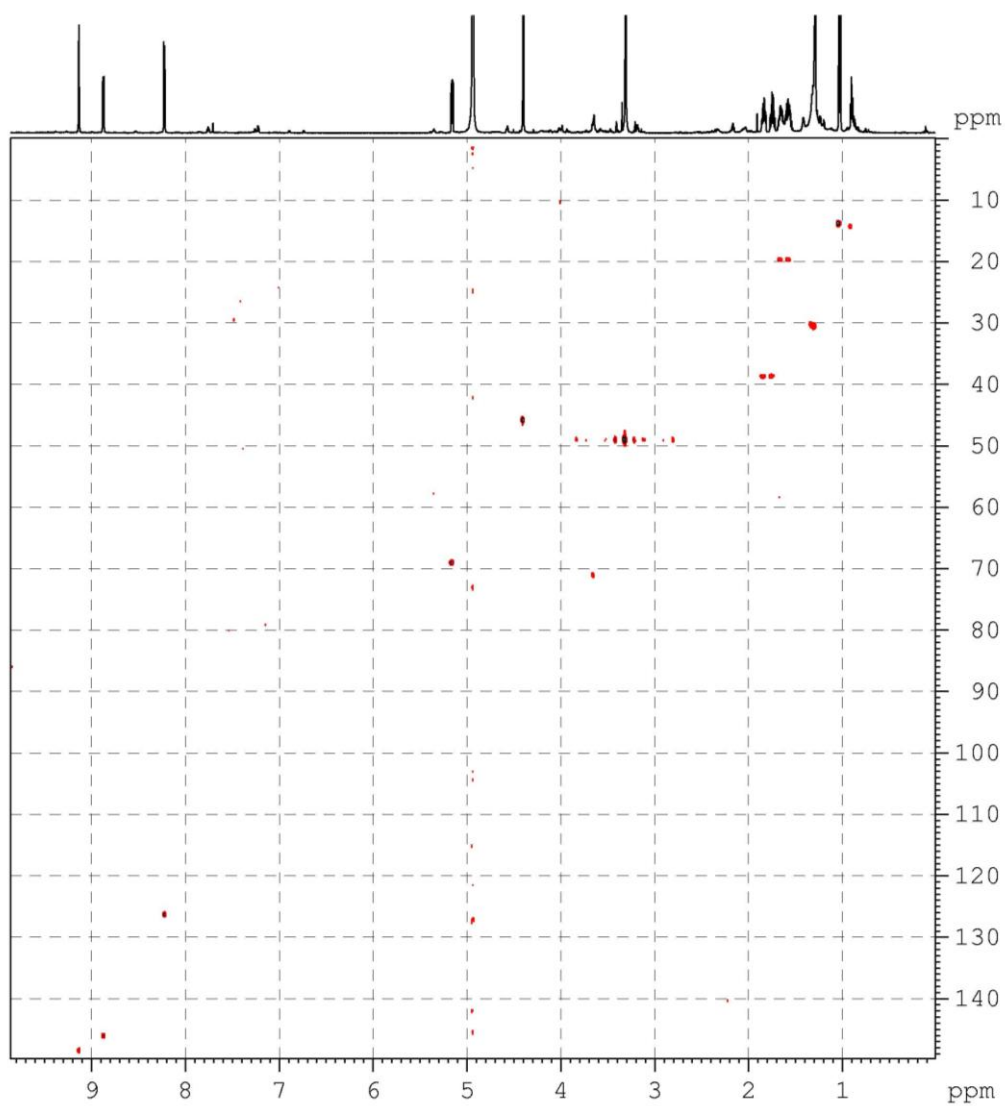


Figure S4. HMBC spectrum of compound 5.

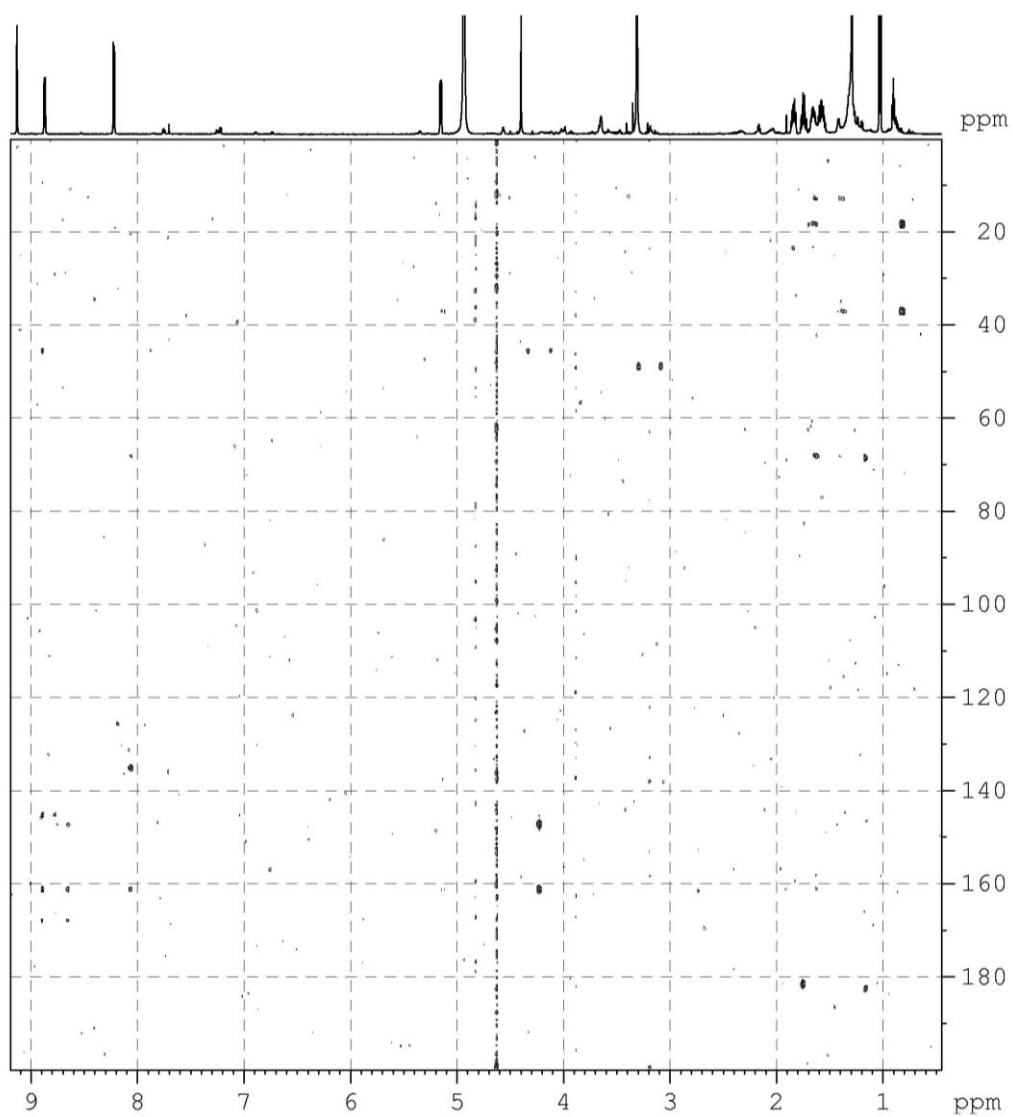


Figure 5. ^{13}C -NMR spectrum of compound 5.

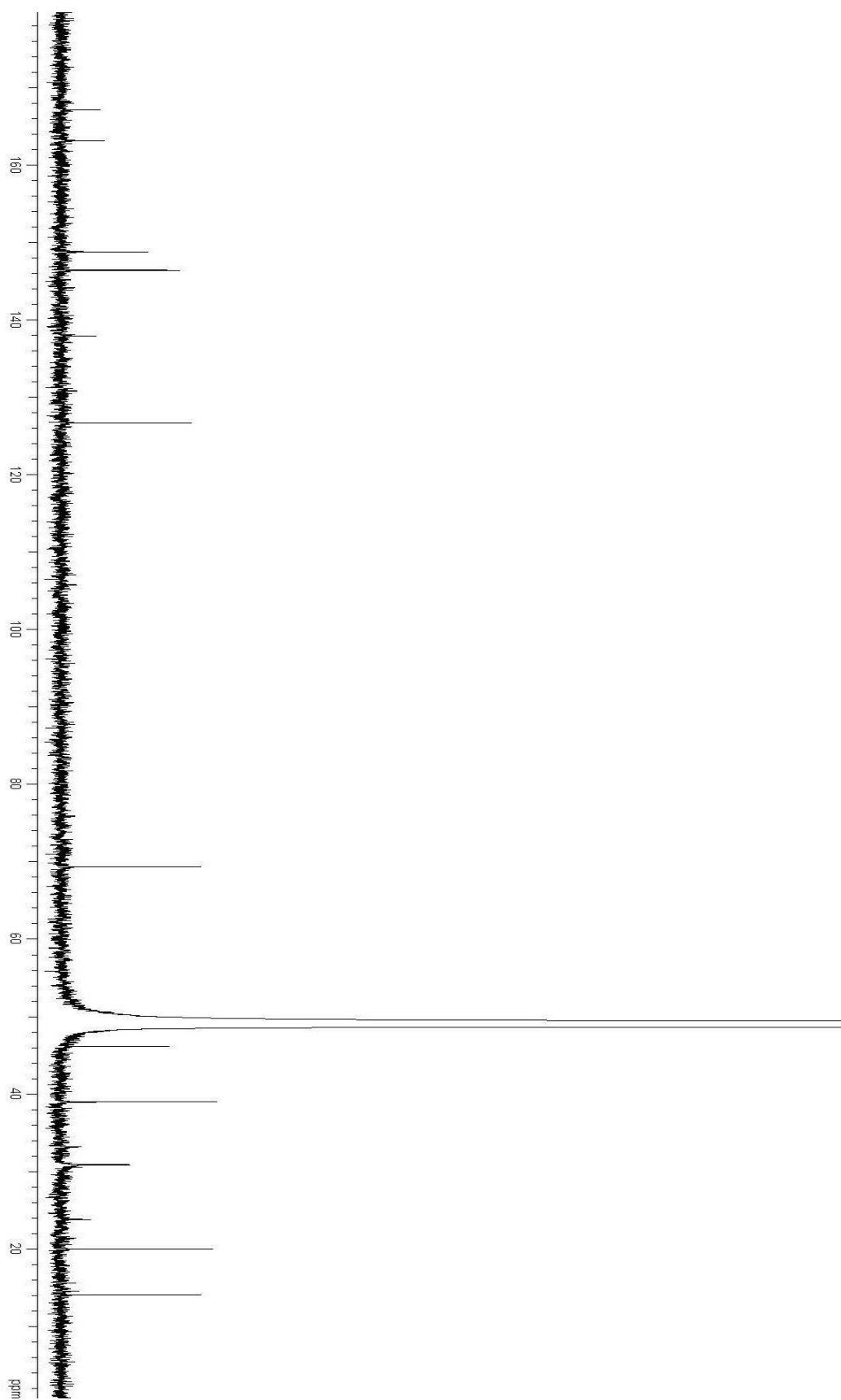


Figure S6. HRESI mass spectrum of compound 5.

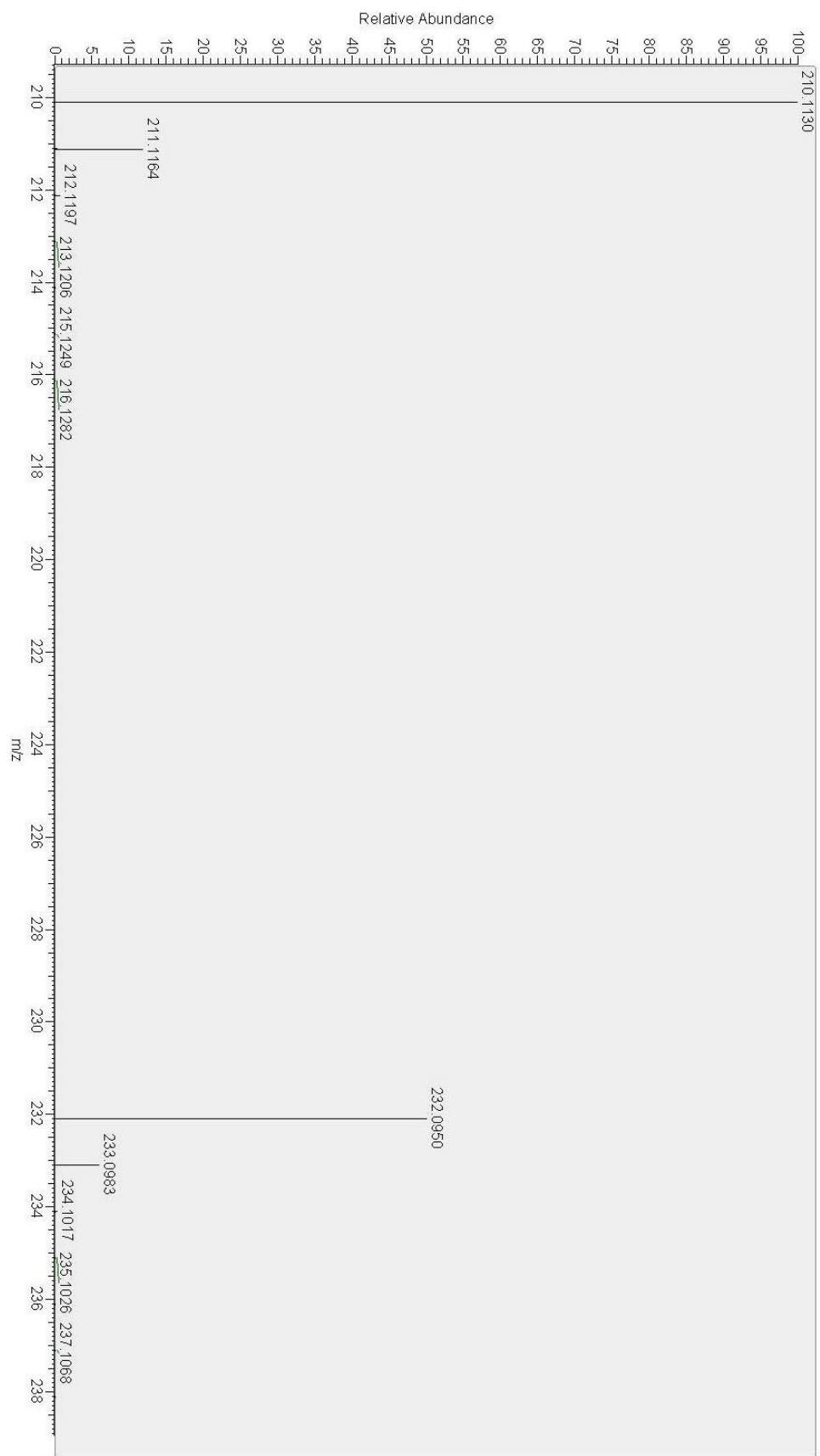


Figure S7. $^1\text{H-NMR}$ spectrum of compound **8**.

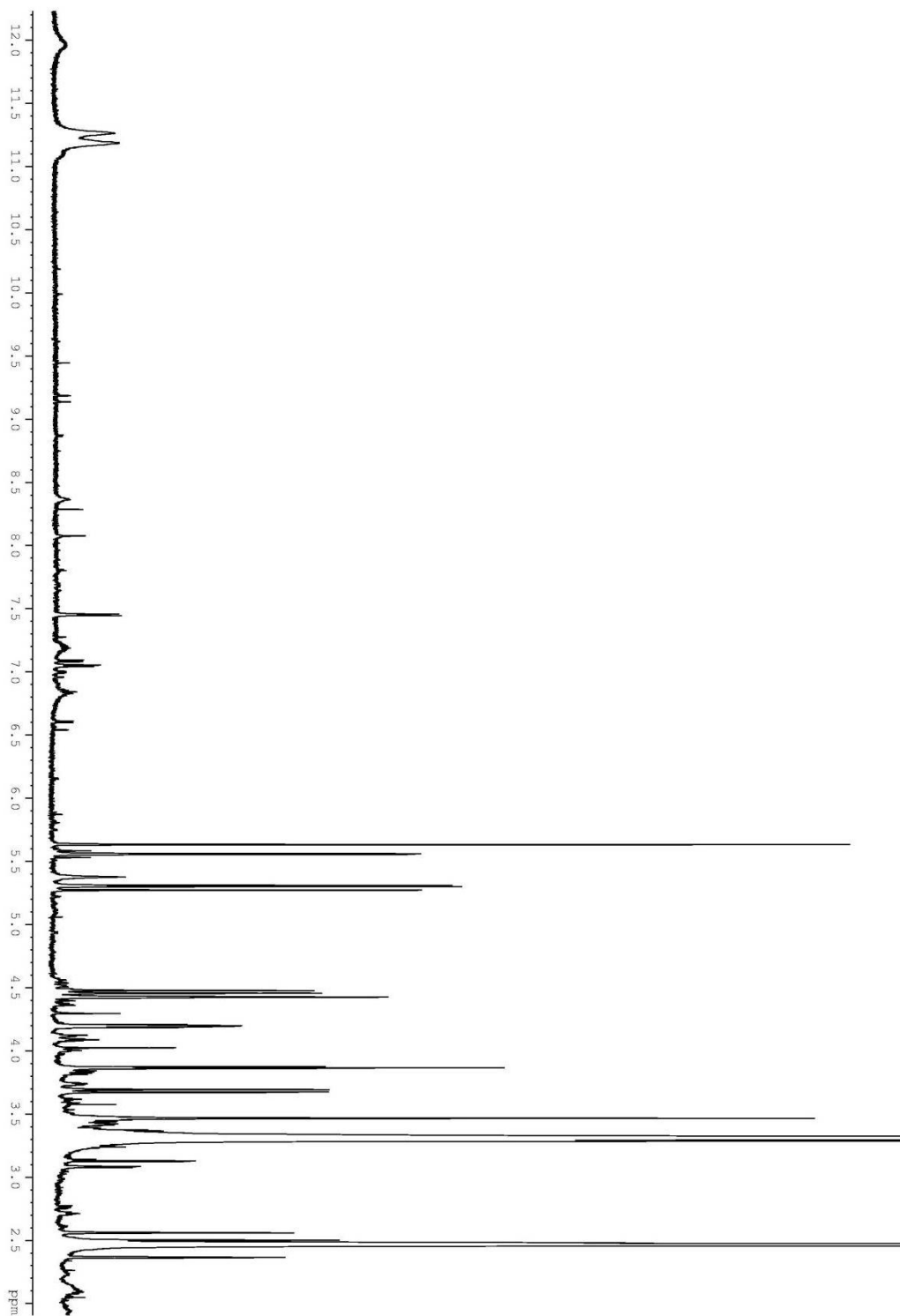


Figure S8. COSY spectrum of compound 8.

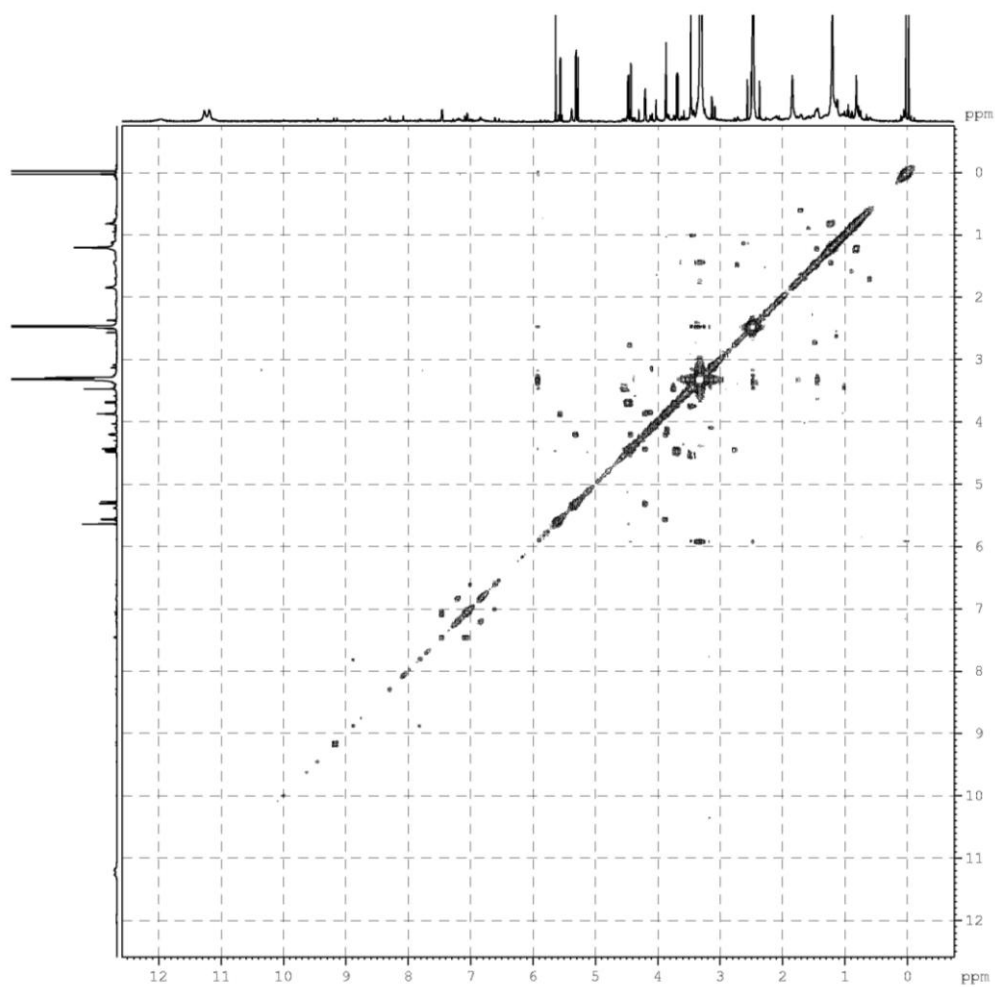


Figure S9. HSQC spectrum of compound 8.

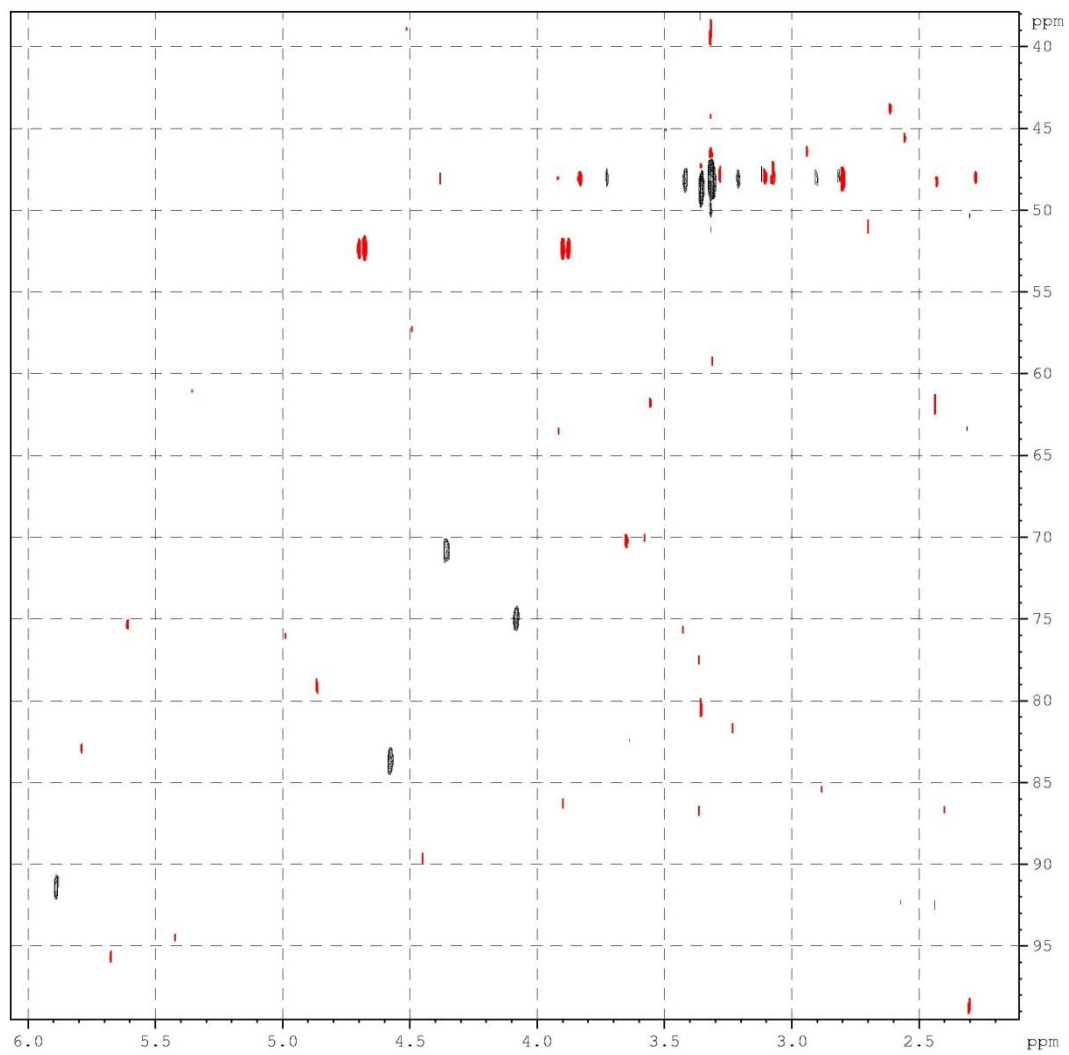


Figure S10. HMBC spectrum of compound 8.

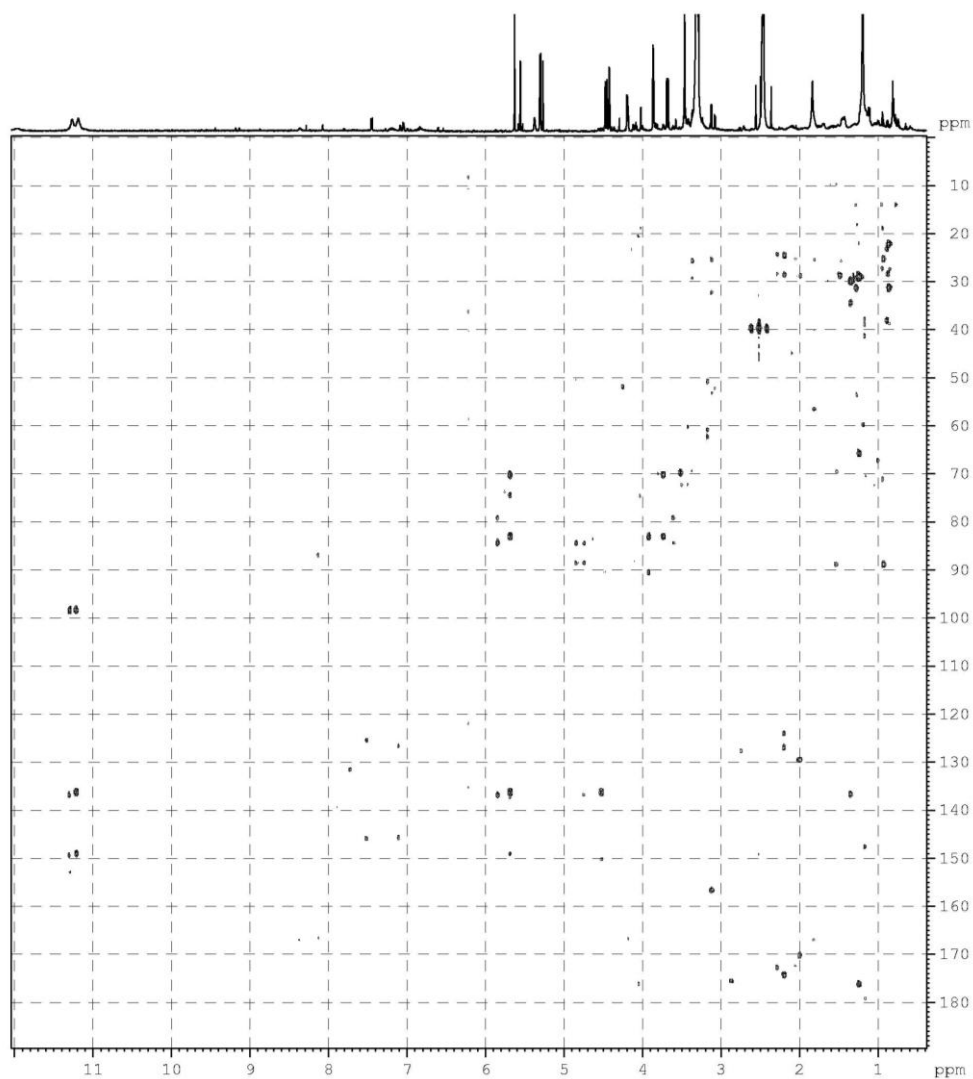


Figure S11. HRESI mass spectrum of compound 8.

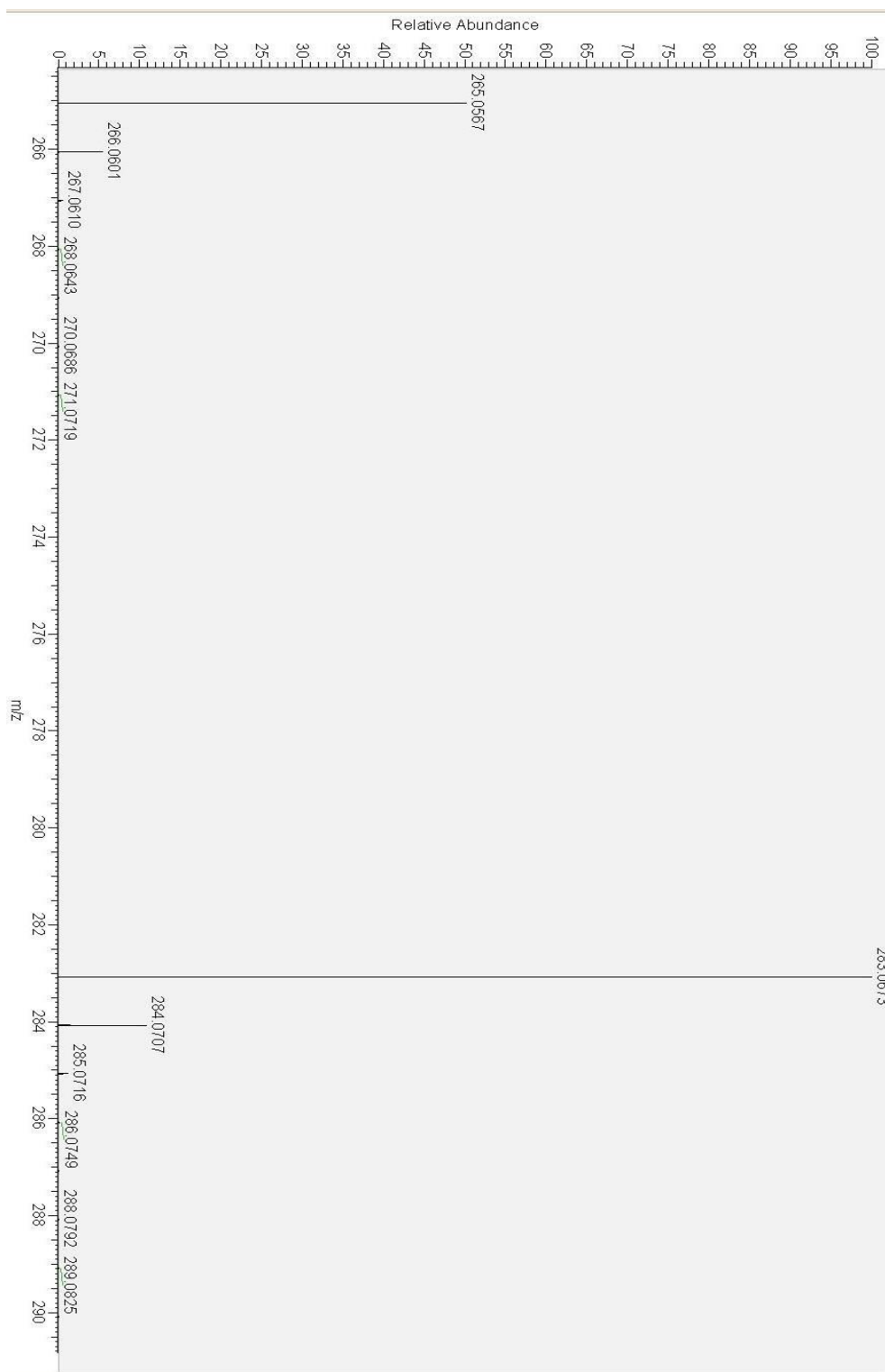


Figure S12. ^{13}C -NMR spectrum of compound 5.

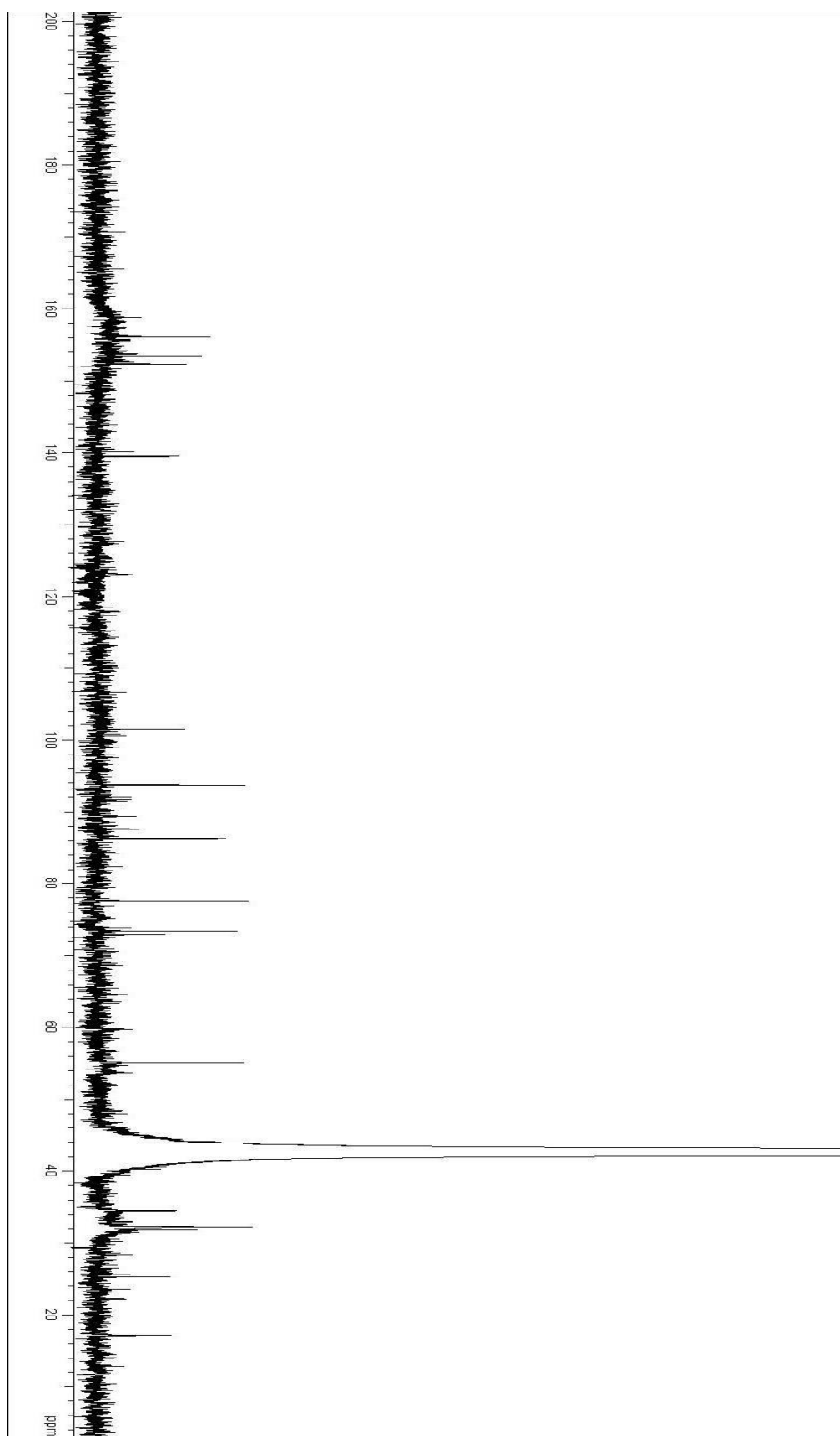


Figure S13. Minimum Energy Conformations for S-5.

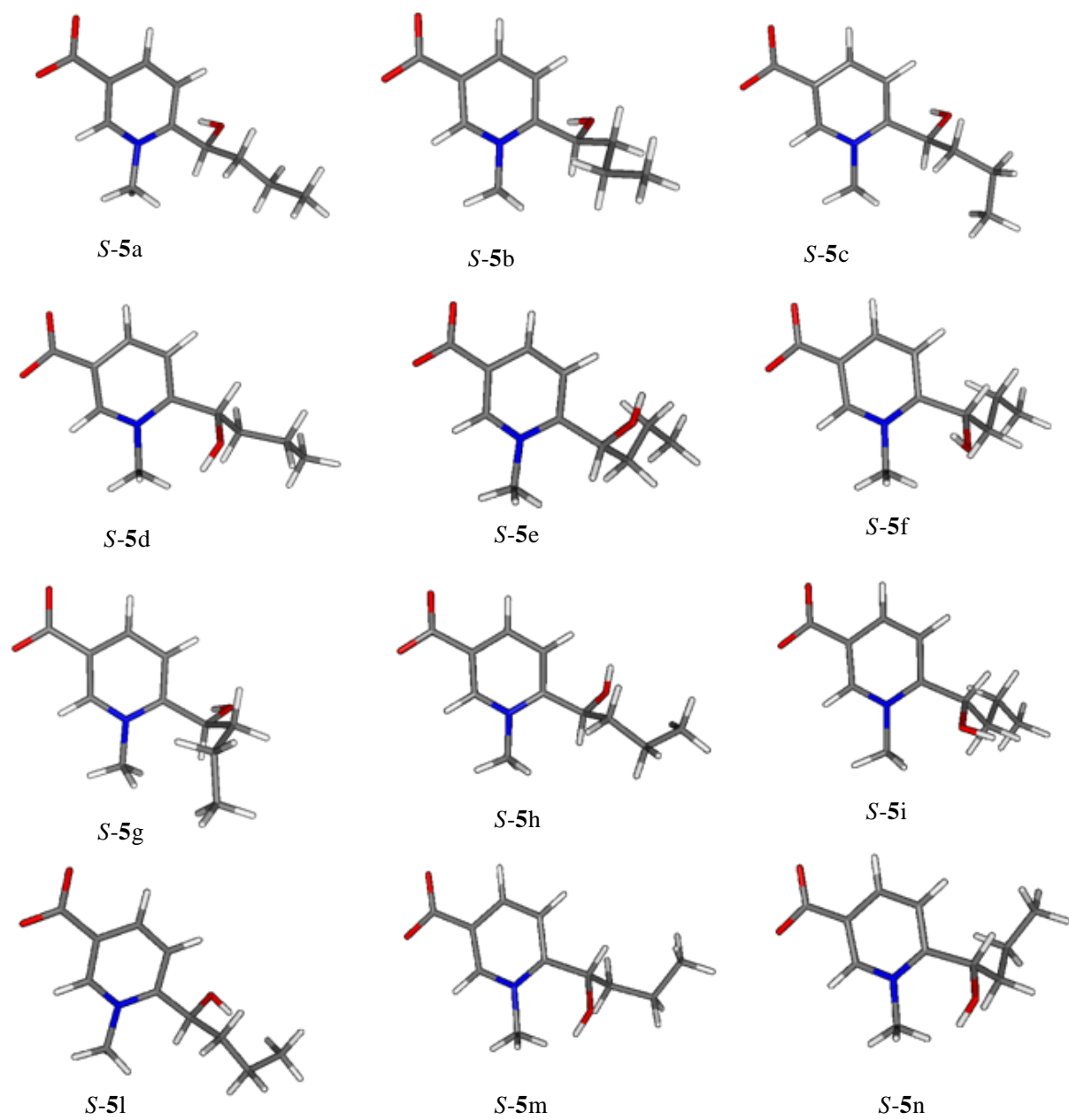


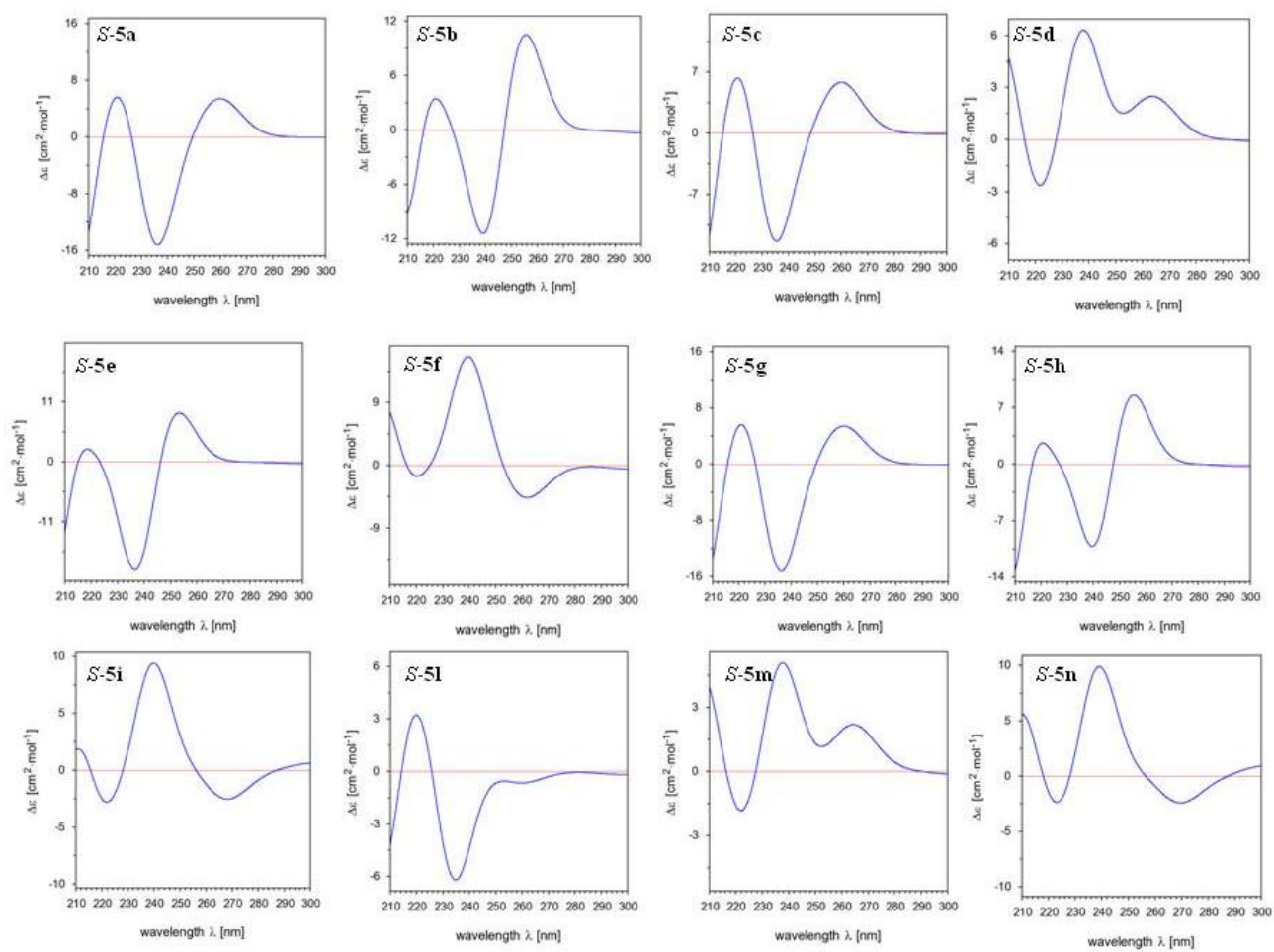
Figure S14. Calculated ECD of *S-5* at the B3LYP/6-31G **.

Table S1. Conformational Analysis of *S*-5 conformers in methanol.

	E^a	G^b	P%^c
<i>S</i> -5a	0.00	0.00	45.75
<i>S</i> -5b	0.25	0.52	18.91
<i>S</i> -5c	0.79	0.69	14.29
<i>S</i> -5d	0.91	1.01	8.32
<i>S</i> -5e	1.05	1.25	5.55
<i>S</i> -5f	1.24	1.57	3.23
<i>S</i> -5g	1.26	1.62	2.97
<i>S</i> -5h	1.47	3.08	0.25
<i>S</i> -5i	1.47	3.08	0.25
<i>S</i> -5l	1.81	3.25	0.19
<i>S</i> -5m	1.81	3.25	0.19
<i>S</i> -5n	1.94	3.69	0.09

^a Relative energy (kcal/mol). ^b Relative Gibbs free energy (kcal/mol). ^c Conformational distribution calculated at the at the B3LYP/6-31G(d) level in methanol.